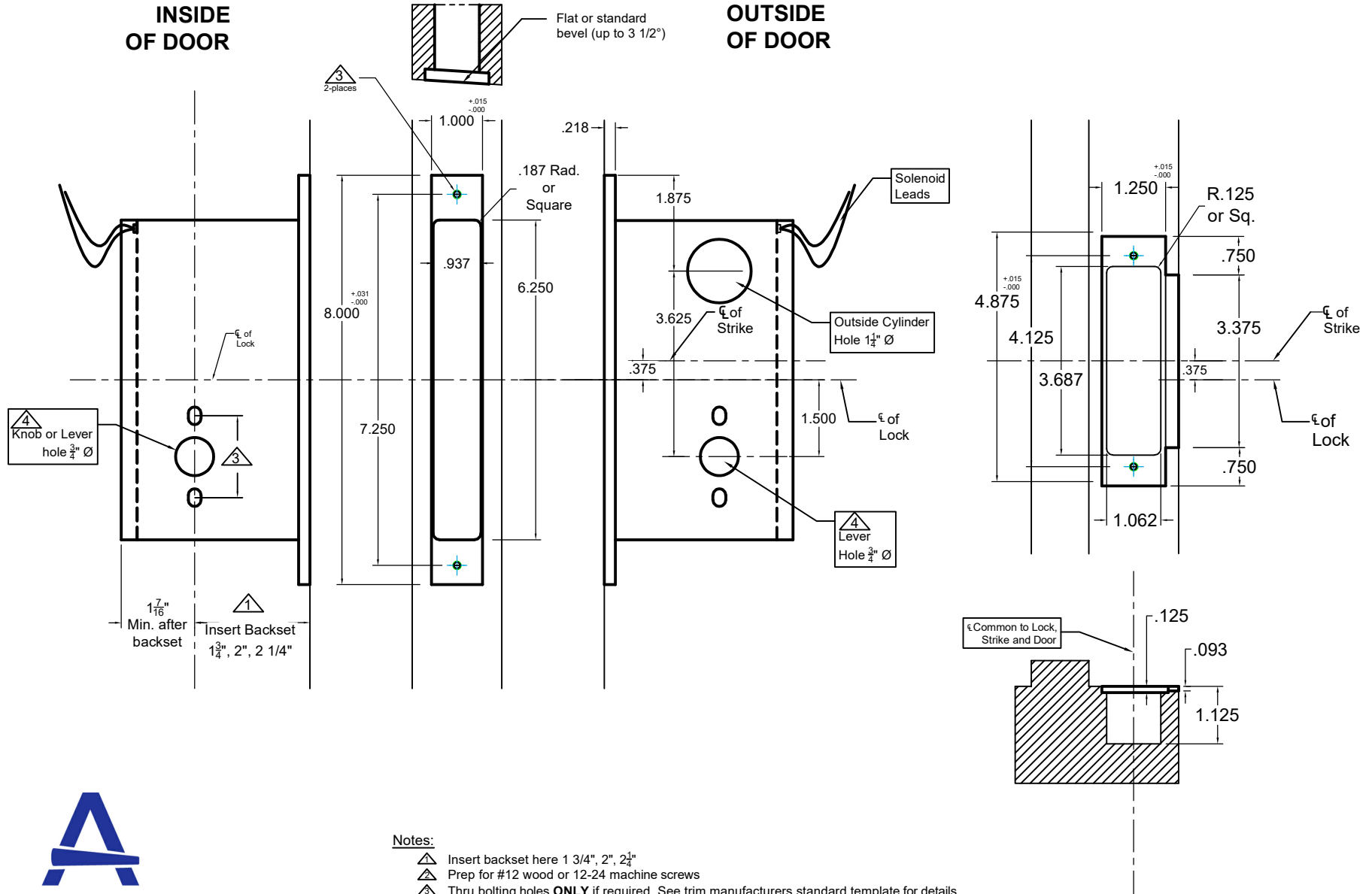


INSIDE  
OF DOOR

OUTSIDE  
OF DOOR



**Notes:**

- Insert backset here 1  $\frac{3}{4}"$ , 2", 2  $\frac{1}{4}"$
- Prep for #12 wood or 12-24 machine screws
- Thru bolting holes **ONLY** if required. See trim manufacturers standard template for details.
- Accurate lock's accommodates  $1\frac{1}{2}"$  to  $1\frac{11}{16}"$  center to centers and up to  $\frac{3}{4}"$  dia. post.
- If there are any additional questions about the thru-bolting, please contact our office.
- Lever holes may vary from different trim manufacturers. Please refer to their templates to confirm these dimensions.

**Additional Notes:**

- a) **Responsibility:** Door and frame manufacturers are responsible for providing adequate construction or re-inforcement for proper installation of hardware shown.
- b) Please contact us if a double lip strike is needed - for a proper template
- c) See catalog / spec sheets for additional lock details



Standard M8759E Template  
All Backsets

T-ALH.M8759E