



SMARTENTRY™

by ACCURATE

SL-SM9159E Series

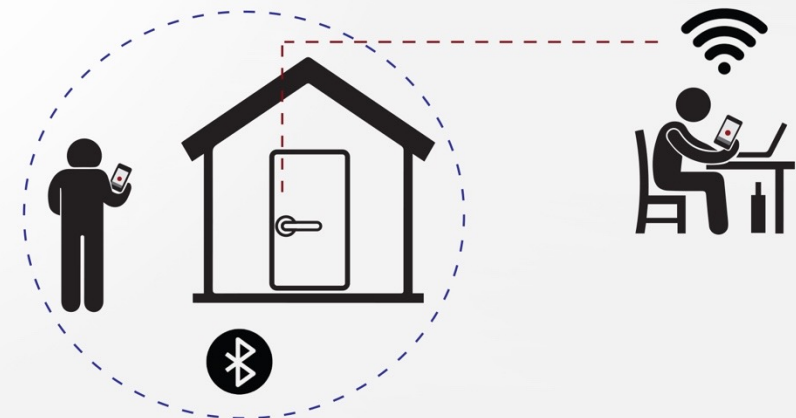
Self-Latching Smartphone Mortise Lock for Sliding + Pocket Doors

THE LEADING SMART LOCK SOLUTION FOR SLIDING DOORS


SL-SM9159E SmartEntry Self-Latching Mortise Lock for Sliding + Pocket Doors


As the leading smartphone-operated system for mortise locks, the SmartEntry™ combines Accurate's mechanical expertise with industry leading technology. The battery-powered smartlock features keyless entry via Bluetooth® communication that is controlled by a proprietary app for ease and convenience. Keeping design top of mind, this lock is compatible with any style trim and has no exposed electronics.


- All components hidden inside mortise pocket
- Fully customizable –pair with virtually any style architectural trim
- Battery powered for easy installation. Door does not require wiring
- Lock and unlock the door and grant keyless entry via smartphone app




SL-SM9159E SmartEntry Self-Latching Mortise Lock for Sliding + Pocket Doors


  iOS + Android compatible

 Admin can provide access to up to 25 users
24/7 or on a schedule

 Local access via Bluetooth®

 Compatible with Sectional, ADA and
Flush Pull Trim Configurations

 Control lock remotely from anywhere in the world

 Battery operated with app indicator



SL-SM9159E-LL Sectional Trim

19L Lever / 4R Rose

The Self-Latching SmartEntry™
Smartphone Mortise Lock is paired with
sectional trim (thumb turn inside,
cylinder outside) on a sliding door.
Compatible with any Accurate Lever/Rose
combination.

[WATCH THE VIDEO](#)





SL-SM9159E-ADA ADA Trim

72L Lever / 1E Escutcheon

The Self-Latching SmartEntry™
Smartphone Mortise Lock is paired with
ADA Compliant (thumb turn inside,
cylinder outside) on a sliding door.

WATCH THE VIDEO



SL-SM9159E-PDL

Pocket Door Trim

The Self-Latching SmartEntryTM Smartphone Mortise Lock is paired with flush pulls on either side allowing the door to return completely inside a pocket.

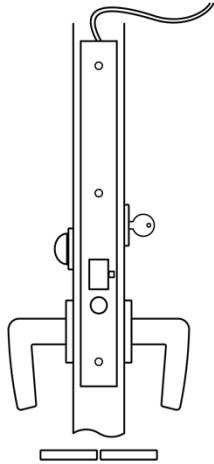
[WATCH THE VIDEO](#)



SL-SM9159E Series | Operation

SL-SM9159E-LL

Sectional Trim Lever x Lever



OUTSIDE:

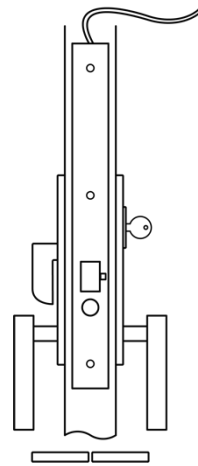
Latch by lever outside after handle is unlocked with smartphone. Outside lever remains unlocked unless user changes settings to have the lever automatically re-lock. If Outside handle is unlocked, phone or fob used to re-lock. If lock is electronically disabled (Secure Mode) on home screen or in settings, outside lever automatically locks and latch bolt can only be retracted by key. When lock is in Secure Mode, outside lever will remain locked at all times.

INSIDE:

Latch by lever inside always. When inside lever retracts latch, outside lever unlocks (similar to 9124) unless user changes settings to have lever automatically re-lock (similar to 9148). Rotating thumb turn locks the outside handle and thumb turn springs back to home position. Thumb turn will NOT unlock the outside lever.

SL-SM9159E-ADA

ADA Trim



STATUS:

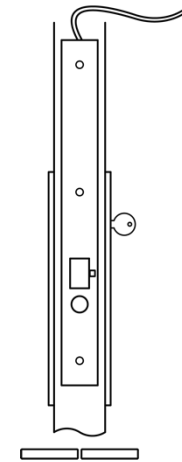
Latch bolt monitor- confirms that latch bolt is fully projected
Stop bar monitor- confirms that outside handle is locked

GENERAL NOTES:

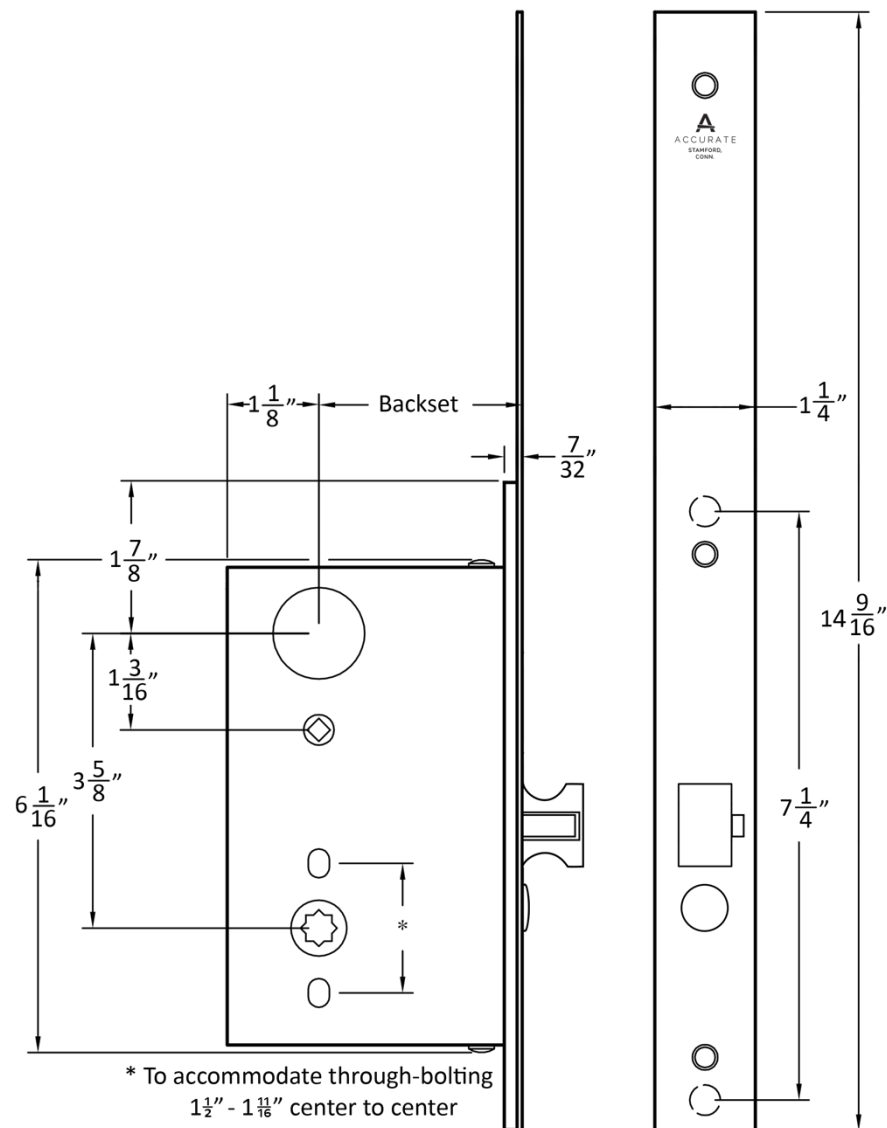
System uses Bluetooth when in proximity and optional Ethernet Bridge can be ordered for remote access.
Lock operated by 4 AA batteries with low battery warning in app. To replace the batteries simply remove armor plate on edge of door and access the battery pack.
Lock can also be powered with traditional hard wired power supply up to 24 volt DC. Please specify if you are using it this way.

SL-SM9159E-PDL

Pocket Door Flush Pull Trim



SL-SM9159E Series | Technical Details



BACKSET: 2 1/2", 2 3/4" backset standard; larger backsets available as a special order.

CASE: Heavy Gauge, Plated Steel ($15/16$ " thick)

LATCH BOLT: Solid stainless steel latch bolt, 1" tall, 3/4" throw

STRIKE: 4⁷/₈" ASA. Supplied with Security Strike

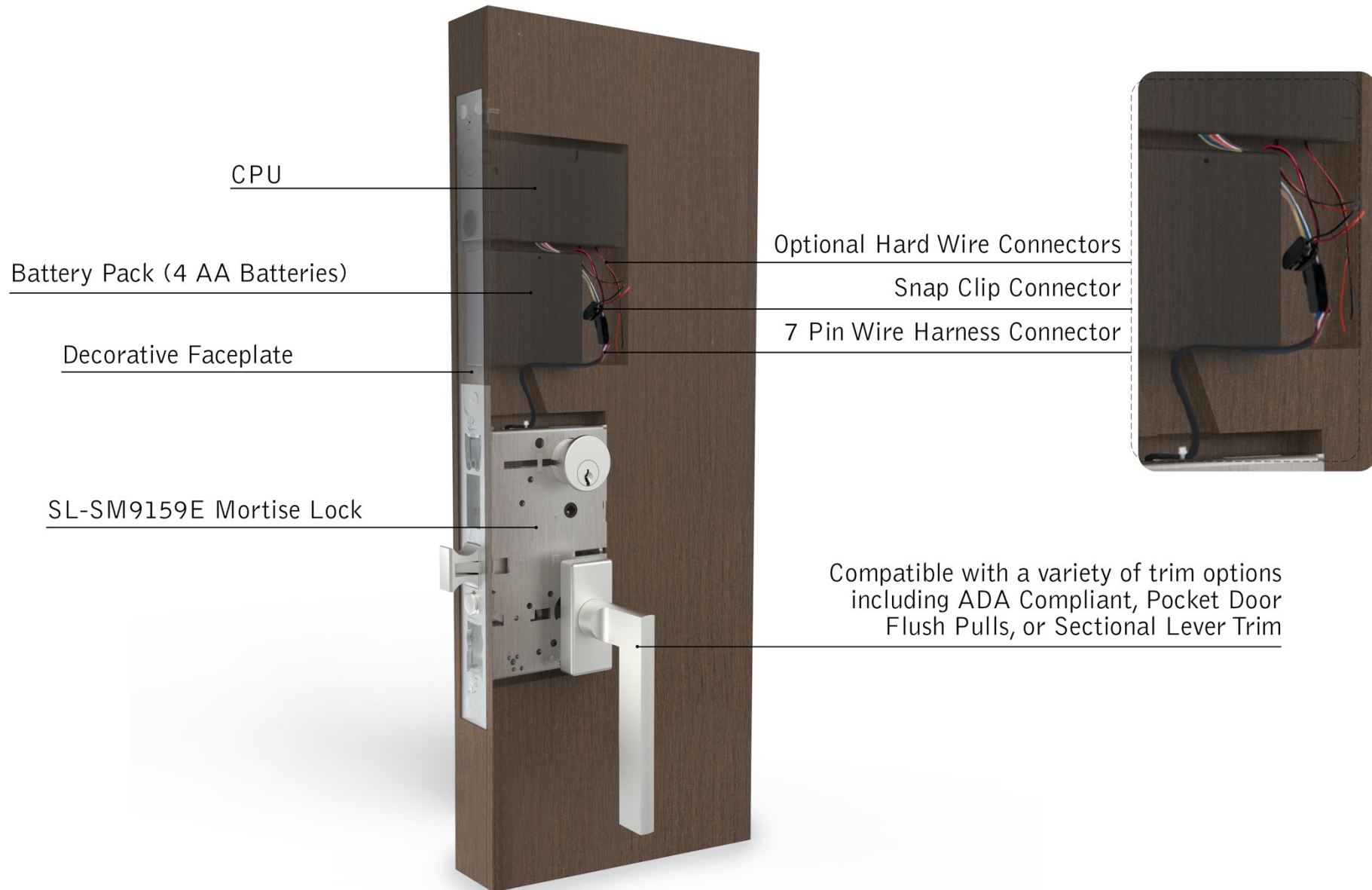
HUBS: Available in different sizes to be compatible with various trim options

THUMB TURN HUB: $\frac{3}{16}$ " (5mm) on the diamond

DUST BOX: Brass, stainless steel, or US10B

ARMOR FRONT: Stainless steel with adjustable bevel
Supplied with 14 ⁹/₁₆" tall face plate to cover battery mortise pocket

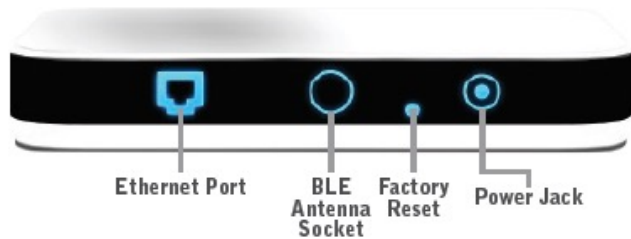
SL-SM9159E Series | Components



SL-SM9159E Series | Optional Components

Available as optional accessories for an additional charge, please contact your local distributor.

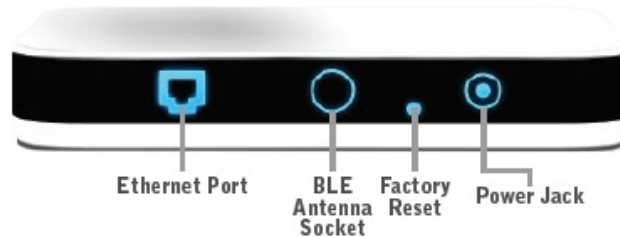
ETHERNET BRIDGE



Includes:

- Ethernet Cable (3 feet long)
- BLE Antenna
- Power Supply 5V@1A
- Product Information Label

RANGE EXTENDER



Includes:

- BLE Antenna
- Power Supply 5V@1A
- Product Information Label

SMARTENTRY KEYPAD

(SM-KP)



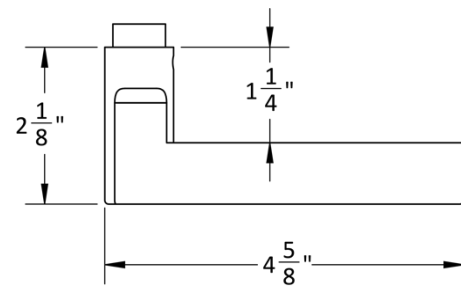
Dimensions:

- 5¹/₄" H
- 2¹/₈" W
- 1³/₁₆" D

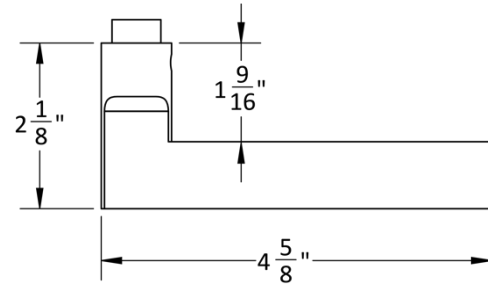
Accurate Lever Trim

For SL-SM9159E Sectional Trim (LxL) and ADA Sets

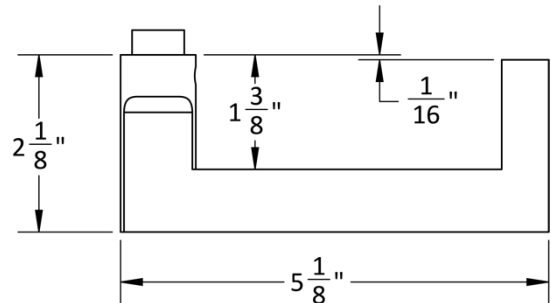
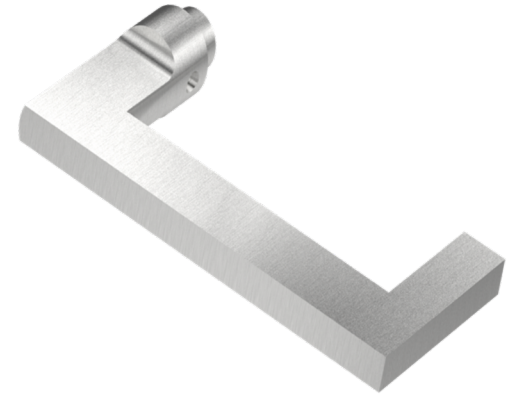
18L LEVER



19L LEVER



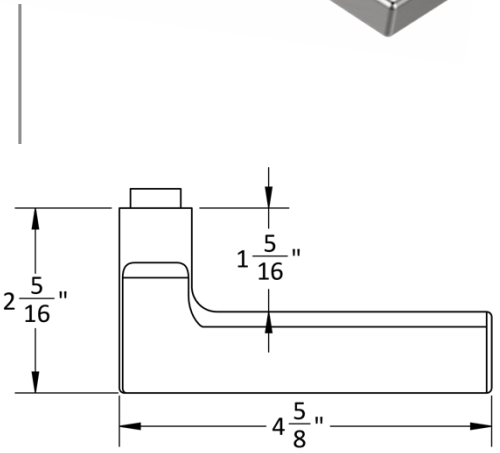
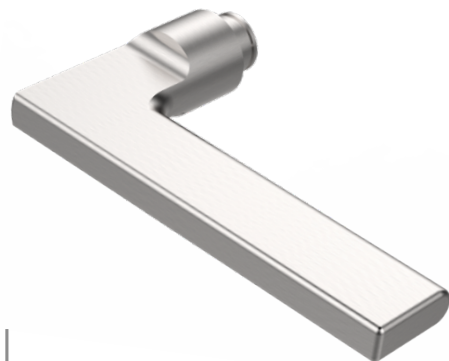
20L LEVER



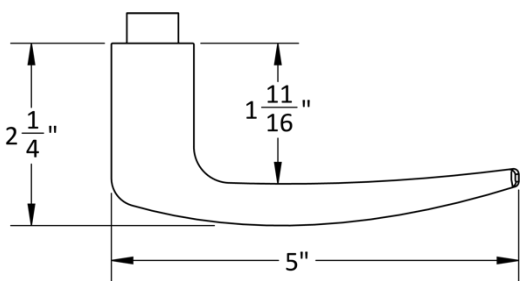
Accurate Lever Trim

For SL-SM9159E Sectional Trim (LxL) and ADA Sets

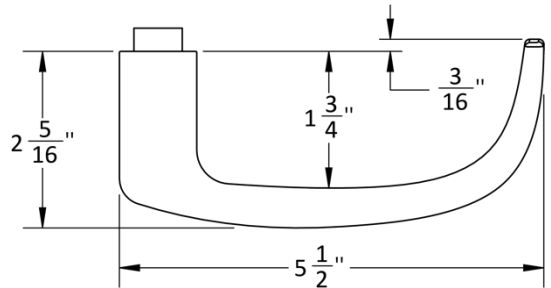
21L LEVER



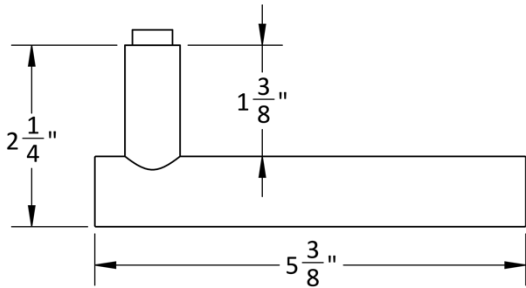
29L LEVER



39L LEVER



72L LEVER



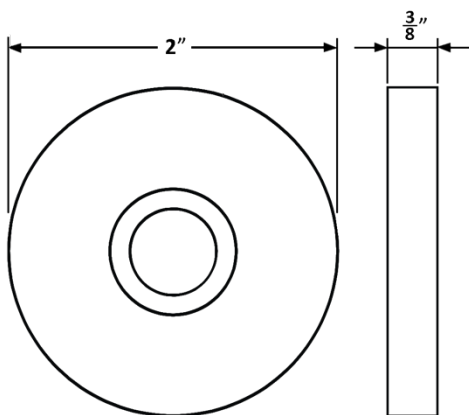
Accurate Rose Options

For SL-SM9159E Sectional Trim (LxL) Sets

1R ROSE

Front

Side



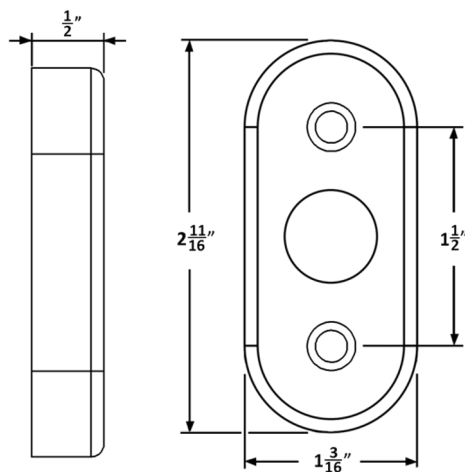
SILENTPAC™ LEVER DAMPENING DISC CAN BE
SPECIFIED WITH THE 1R ROSE
VISIT SILENTPACSOLUTIONS.COM

2R ROSE

Side

Inside

Outside

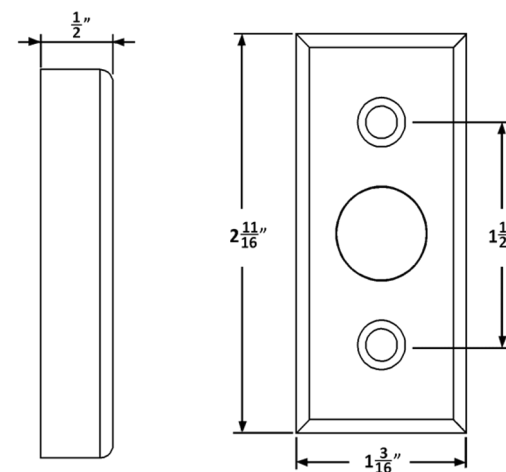


4R ROSE

Side

Inside

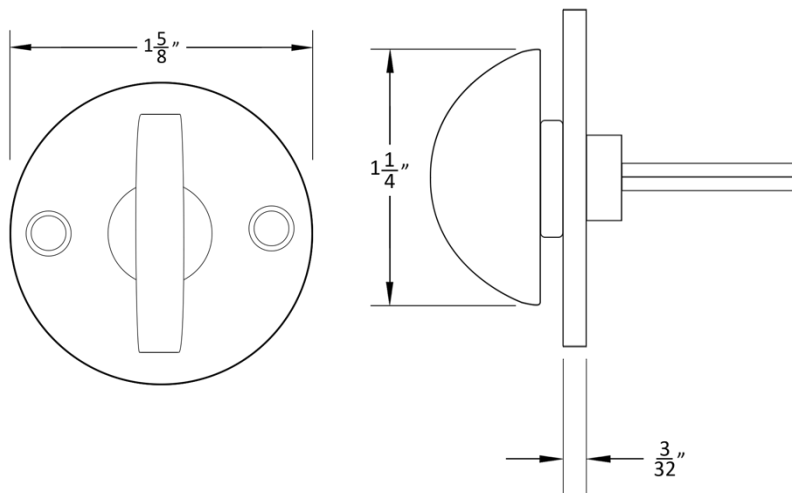
Outside



Accurate Thumb Turn

GF1106

For SL-SM9159E Sectional Trim Sets

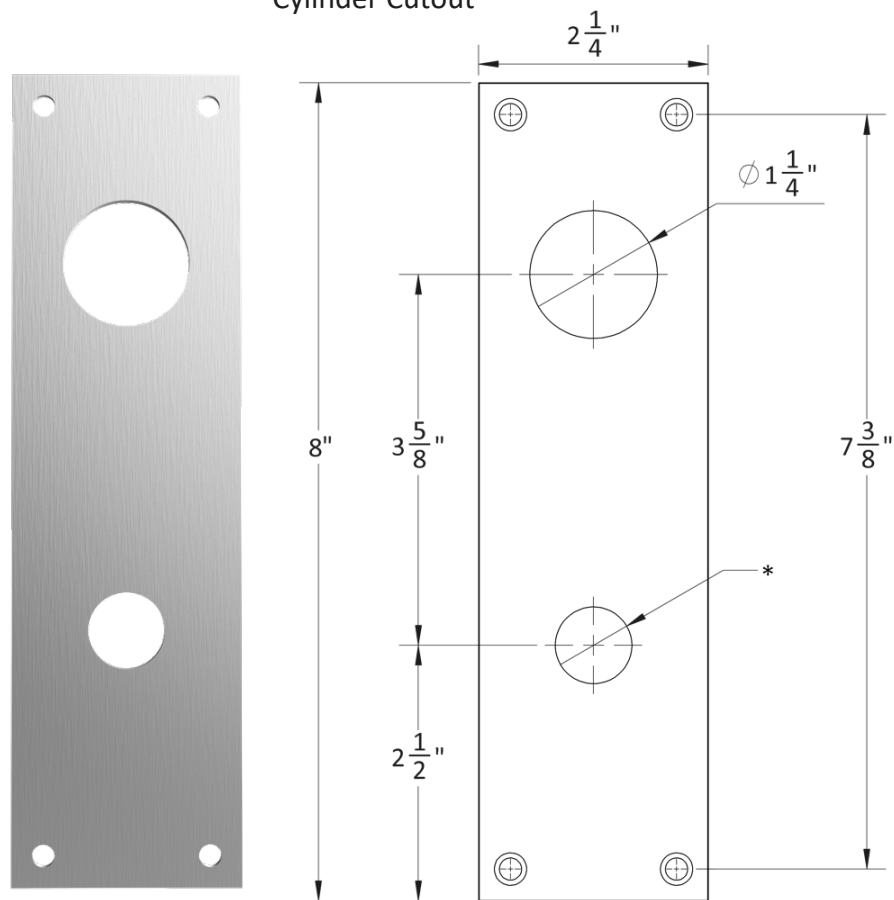


Accurate Escutcheons

For SL-SM9159E-ADA Sets

1E-C

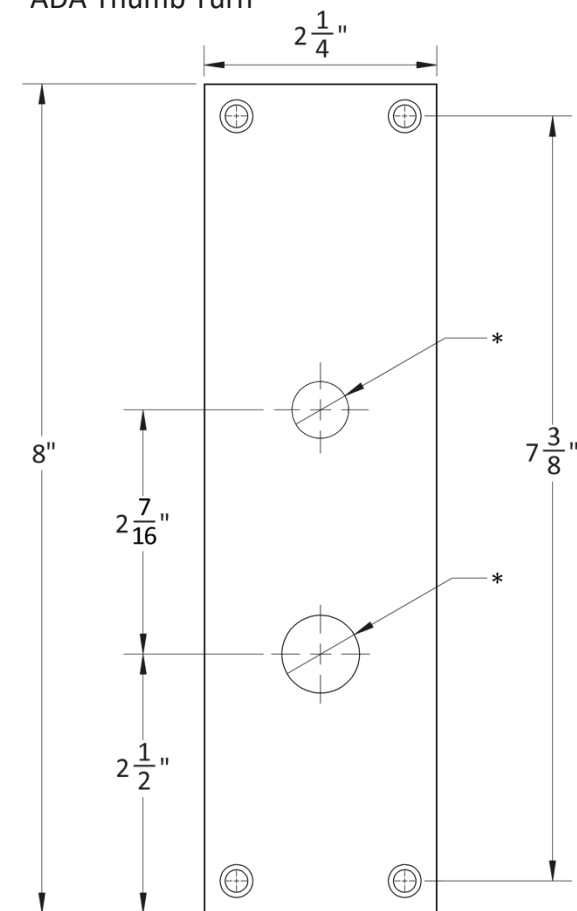
Escutcheon with
Cylinder Cutout



* Dimensions may vary depending on trim

1E-ADA

Escutcheon with
ADA Thumb Turn



* Dimensions may vary depending on trim

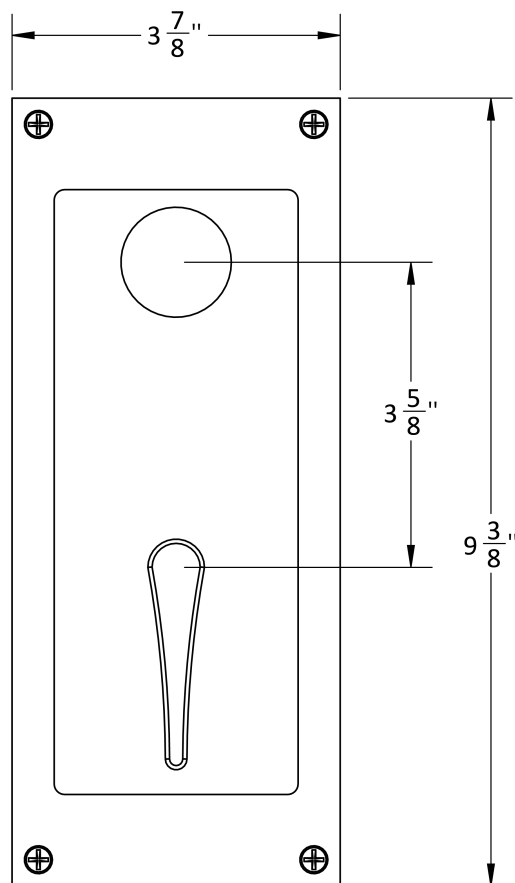
Cylinders by others, or must be specified
when ordering. [See more info here.](#)

Accurate Flush Pull Trim

For SL-SM9159E-PDL Sets

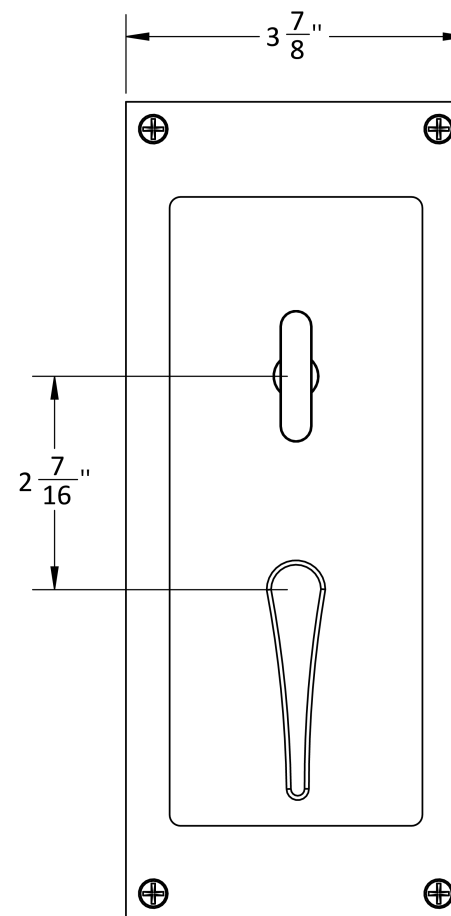
SLFT-C

Flush Pull with
Cylinder Cutout



SLFT-T

Flush Pull with
Thumb Turn



Cylinders by others, or must be specified
when ordering. [See more info here.](#)

HOW TO SPECIFY

HANDING



FINISHES

GROUP 1: US4, US4NL, US32D*, US26D

GROUP 2: US3, US3NL, US26, US32*, US9*, US10*, US10B, US14, US15, US19

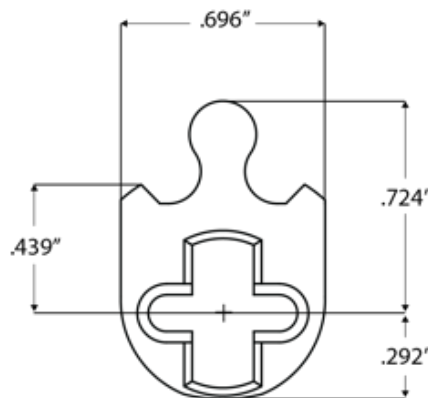
GROUP 3: BN, BB, TN, TB, DURO, ESN, US15A, US5

* Trim options (including Accurate Levers) may not be available in US32D, US32, US9, or US10 finish. Please call for assistance.

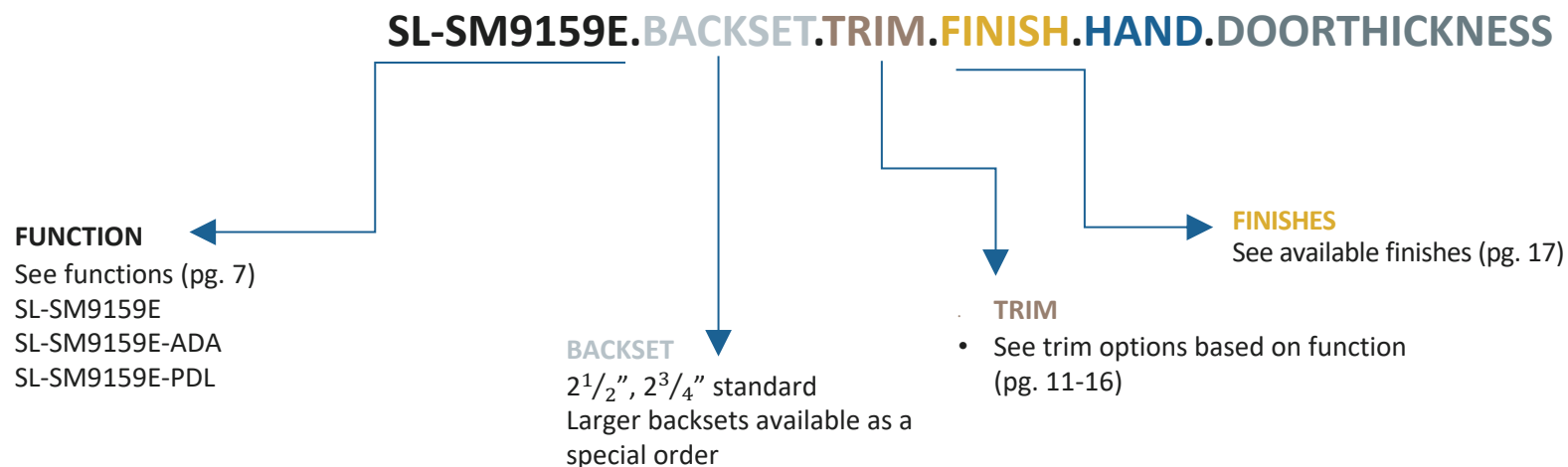
To view example of finishes visit: [Accurate Finishes](#).

CYLINDERS & KEYING

SL-SM9159E Series locks accept any standard American mortise cylinder. For details on required cams and compatibility with other manufacturers' cylinders, please visit: [Accurate Support](#).



HOW TO SPECIFY



EXAMPLES

SmartEntry Sliding Door | Accurate Sectional Trim

E.g.: SL-SM9159E-LL.212.29L/1R.US14.RH.134

SmartEntry Sliding Door | ADA Trim

E.g.: SL-SM9159E-ADA.212.19L.US19.RH.134

SmartEntry Pocket Door | Flush Pull Trim

E.g.: SL-SM9159E-PDL.234.US4.LH.214

SmartEntry Sliding Door | Accurate Sectional Trim

E.g.: SL-SM9159E-LL.234.19L/2R.US5.LH.134

SmartEntry Sliding Door | Accurate ADA Trim

E.g.: SL-SM9159E-ADA.212.72L.US26D.RH.134

SmartEntry Pocket Door | Flush Pull Trim

E.g.: SL-SM9159E-PDL.234.US14.RH.214

Cylinders by others, or must be specified when ordering. [See more info here.](#)

**ACCURATE LOCK & HARDWARE
MANUFACTURERS OF LOCKS AND
CUSTOM ARCHITECTURAL HARDWARE**

1 Annie Place | Stamford, CT 06902

P: 203.348.8865

F: 203.348.5234

E: sales@accuratelockandhardware.com

www.accuratelockandhardware.com

**AMERICAN CRAFTED
— SINCE 1972 —**