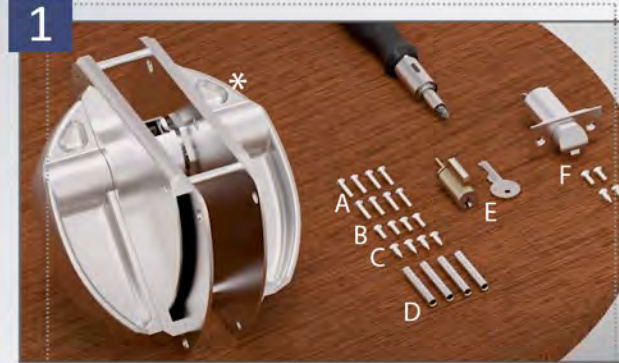


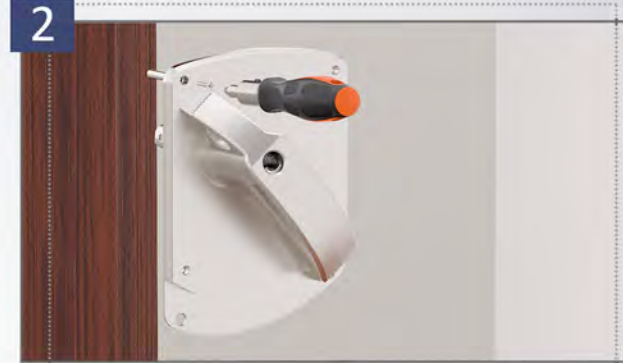
Ligature Resistant Crescent Cylindrical Set Installation Instructions



CH-CYL Assembly Pack

* Some parts come pre-assembled

- A. (8) #8 Torx Long Machine Screws
- B. (4) #8 Torx Short Machine Screws
- C. (4) #8 Torx Wood Screws (For Wood Door)
- D. (4) Through-bolt Posts
- E. Cylinder and key (by others)
- F. (1) Latch with (2) Mounting Screws



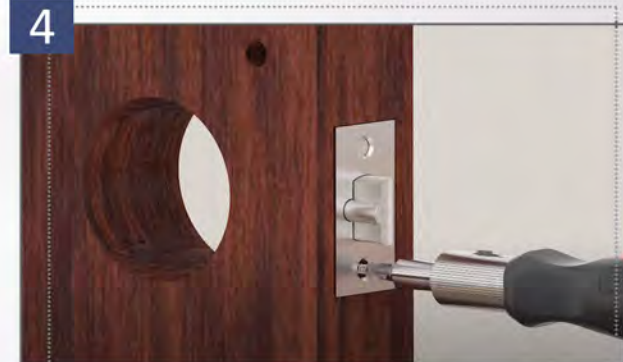
Separate Plates

- Remove screws to disassemble CH-CYL and separate plates
- Once halves are apart, remove plate with cylindrical lock attached



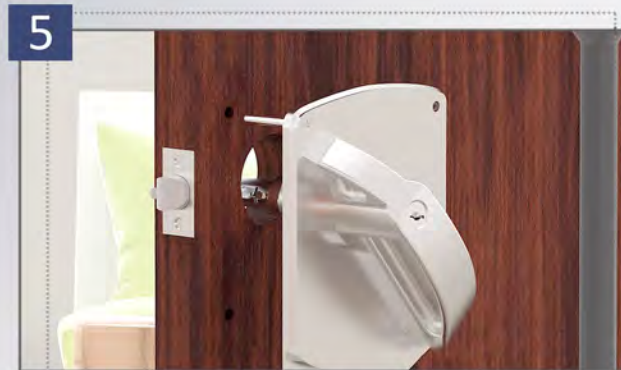
Install Cylinder

- Carefully align cylinder and insert into handle
- Reassemble plates using screws and attaching to through-bolt posts



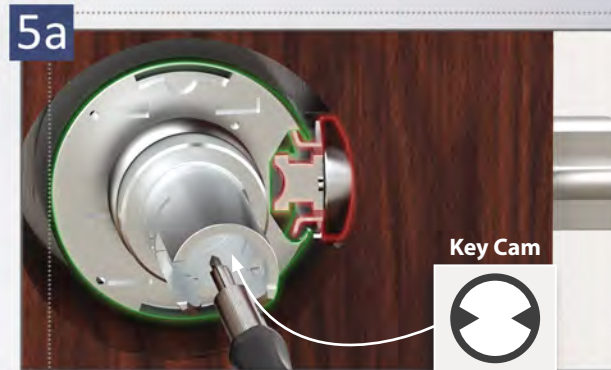
Install Latch

- Insert latch into pre-cut hole in door
- Use provided Torx screws to fasten



Install Assembly

- Align posts with through-bolt holes
- Install on door (see 5a)
- Test functionality



Note

- When installing assembly, ensure chassis locks into wings on latchbolt
- Use Phillips head screwdriver to rotate key cam counterclockwise until it stops
- Confirm correct key cam position before installing remaining assembly



Install Remaining Assembly

- Install remaining assembly onto door
- Use provided Torx screws to fasten on both sides of door



Complete

- Assembly complete



Contact

P: 203.348.8865

W: accuratelockandhardware.com

E: sales@accuratelockandhardware.com



Watch the Video: