



# ACCURATE LOCK & HARDWARE

AMERICAN CRAFTED SINCE 1972

---

## 5000TG Series Thumb Grip Entry Set

CONTEMPORARY TRIM + MORTISE LOCK

MATERIAL	BRASS	GRADE	US15
FINISH	POLISHED	MODEL	FC3004
MANUFACTURER	ACCURATE LOCK & HARDWARE	DATE	
REVISION		BY	



## 5000TG THUMB GRIP ENTRY SET

This clean and contemporary thumb grip design has no exposed screws on either side and makes a simple yet sophisticated statement to any entry door. Pair with popular Accurate mortise locks to best fit the needs of the entry. Available in a variety of entry functions, finishes and backsets and available to ship in 3-5 days.

# 5000TG Thumb Grip Entry Set

## OPEN VIEW

5967 Function



## INTERIOR VIEW

Shown with 19L Lever in US15 Satin Nickel



# 5000TG Product Benefits

## CONCEALED SCREWS

- No exposed screws on exterior or interior of the hardware

## SLEEK DESIGN

- Modern, crisp and sophisticated designs machined from solid brass, available in standard Accurate finishes

## QUICK SHIP

- Made and shipped in 3-5 days (Applicable Finishes: US19, US4, US14)

## VARIETY OF BACKSETS

- Available in narrow, standard or large backsets:  $1\frac{3}{4}$ ", 2",  $2\frac{1}{4}$ ",  $2\frac{1}{2}$ ",  $2\frac{3}{4}$ ",  $3\frac{3}{4}$ ", 5", 6" (call for custom backsets)

## UPGRADE OPTIONS

- Available in Electrified options, High Security, and SmartEntry™

## FINISH PROTECTION

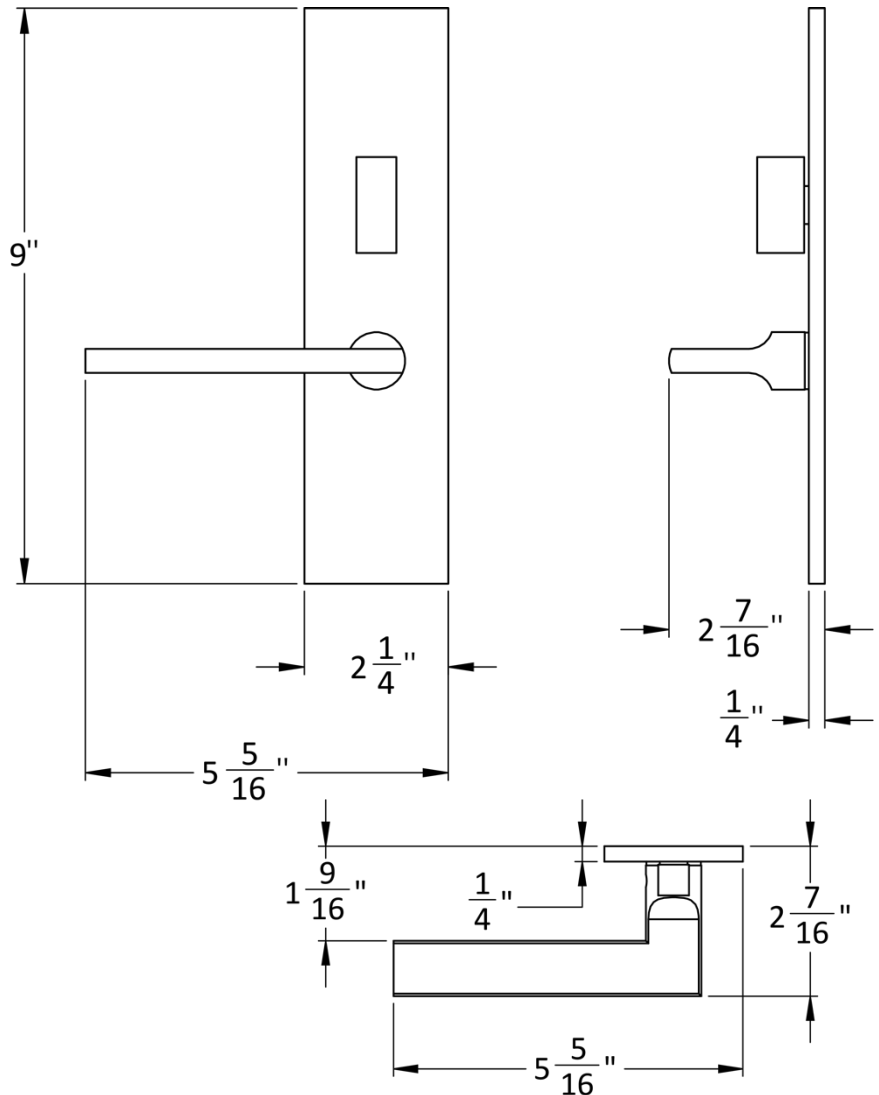
- Cerakote premium protective coating for weather resistance and finish integrity



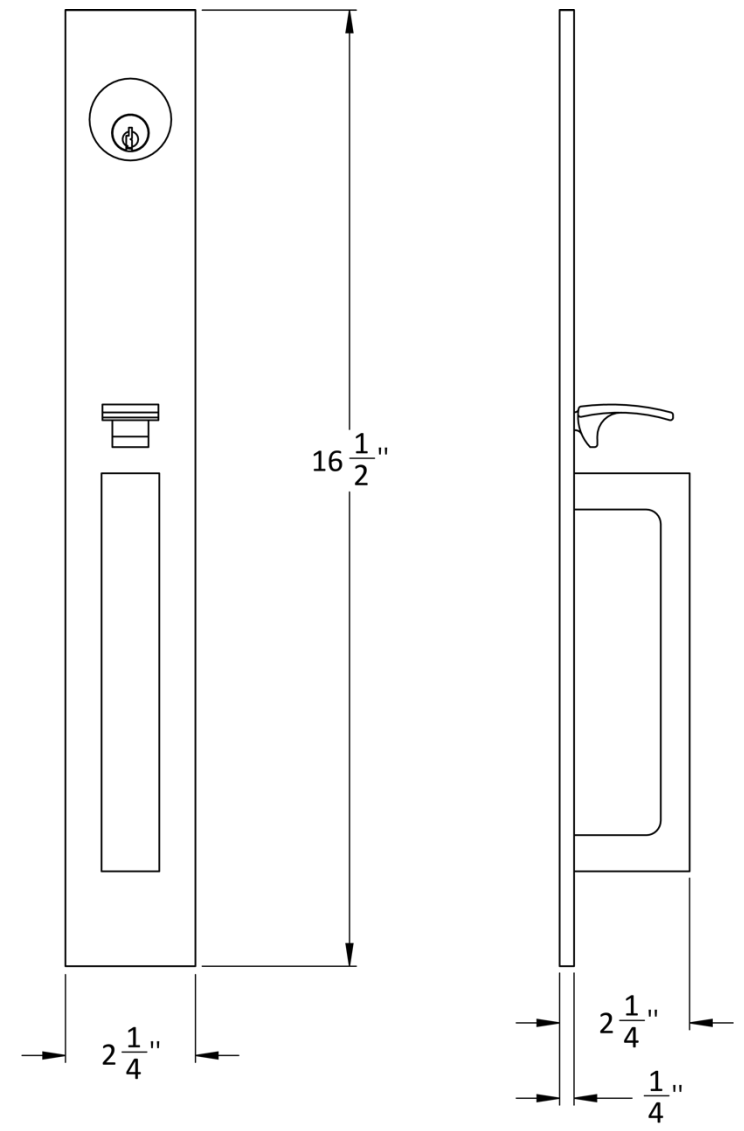
# 500TG Dimensions

## INTERIOR TRIM

Shown with 19L Lever



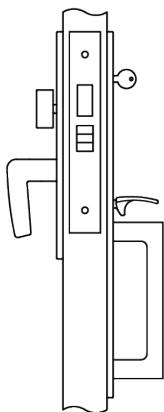
## EXTERIOR TRIM





# 5900TG Common Functions

## 9100 SERIES MORTISE LOCK

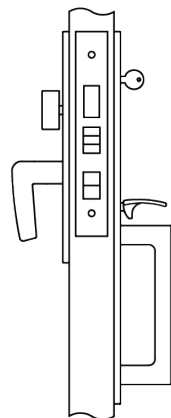


### 5924TG DORMITORY

Latch bolt by lever either side.

Deadbolt by key outside, thumb turn inside.

A turn of the inside lever retracts latch and deadbolt simultaneously, automatically unlocking outside lever.



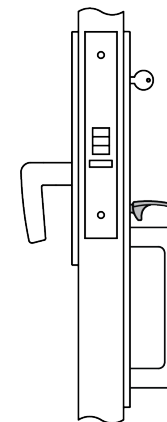
### 5948TG ENTRANCE/APARTMENT

Latch bolt by key outside and lever either side unless outside lever is locked by toggle action stop.

Deadbolt by key outside and thumb turn inside.

Turning inside lever retracts latch and deadbolt simultaneously.

Outside lever remains locked until manually unlocked by toggle.

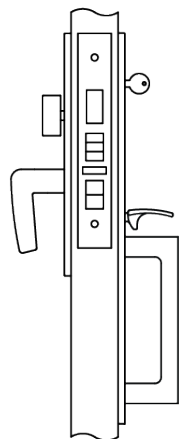


### 5959TG STOREROOM

Latch by lever inside and key outside.

Outside lever always rigid.

Auxiliary latch deadlocks latch bolt.



### 5967TG ENTRANCE/APARTMENT

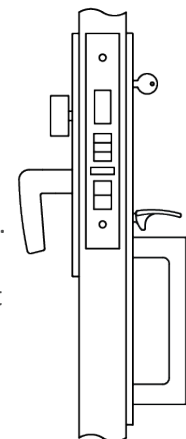
Latch bolt by key outside and lever either side unless outside lever is locked by toggle action stop.

Deadbolt by key outside and thumb turn inside.

Turning inside lever retracts latch and deadbolt simultaneously.

Outside lever remains locked until manually unlocked by toggle.

Auxiliary latch deadlocks latch bolt and prevents manipulation of locked toggle-action stop.



### 5969TG ENTRANCE/APARTMENT

Latch bolt by key outside and lever either side, unless outside lever is locked by toggle-action stop.

Deadbolt by key outside and thumb turn inside.

Turning inside lever retracts latch and deadbolt simultaneously.

Outside lever remains unlocked until manually locked by toggle or projection of deadbolt.

Auxiliary latch deadlocks latch bolt and prevents manipulation of locked toggle-action stop.  
\*Function not offered on thumb grip x thumb grip applications.

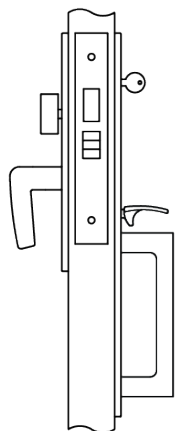
**9100SEC HIGH SECURITY MORTISE LOCK AVAILABLE FOR AN ADDITIONAL CHARGE. SPECIFY SEC AFTER LOCK SERIES NUMBER. (E.G. 5969SEC)**

**MOTOR DRIVE ELECTRIFIED OPTIONS AVAILABLE. [SEE MORE HERE.](#)**



# 5800TG Common Functions

## 8800 SERIES NARROW BACKSET MORTISE LOCK

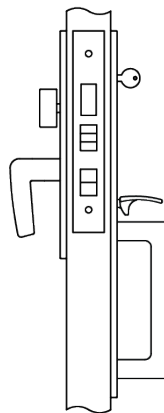


### 5824TG DORMITORY

Latch bolt by lever either side.

Deadbolt by key outside, thumb turn inside.

A turn of the inside lever retracts latch and deadbolt simultaneously, automatically unlocking outside lever.



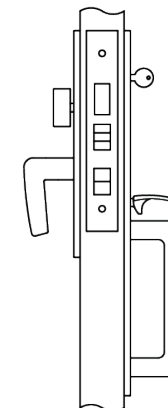
### 5848TG ENTRANCE/APARTMENT

Latch bolt by key outside and lever either side unless outside lever is locked by toggle action stop.

Deadbolt by key outside and thumb turn inside.

Turning inside lever retracts latch and deadbolt simultaneously.

Outside lever remains locked until manually unlocked by toggle.



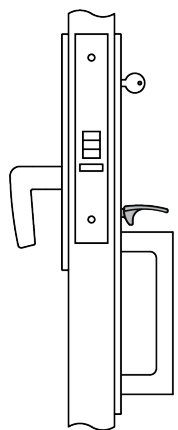
### 5849TG ENTRANCE/APARTMENT

Latch bolt by key outside and lever either side unless outside lever is locked by toggle action stop.

Deadbolt by key outside and turn piece inside.

Turning inside lever retracts latch and deadbolt simultaneously.

Outside lever remains unlocked until manually locked by toggle or projection of deadbolt.



### 5859TG STOREROOM

Latch by lever inside and key outside.

Outside lever always rigid.

Auxiliary latch deadlocks latch bolt.

# Accurate Lever Trim Options

## INTERIOR TRIM

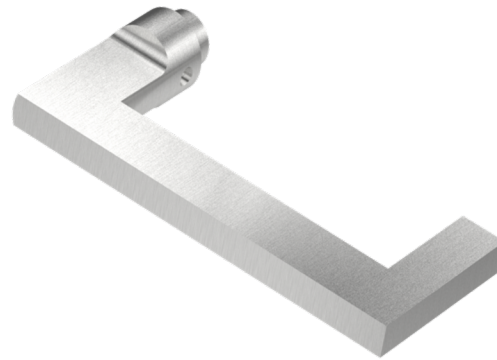
18L LEVER



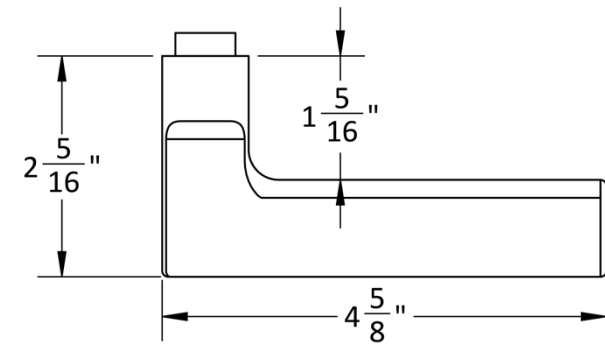
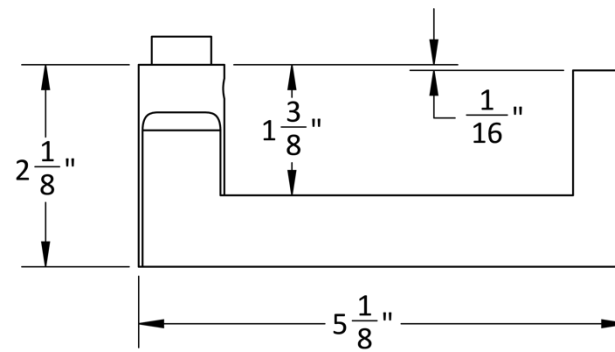
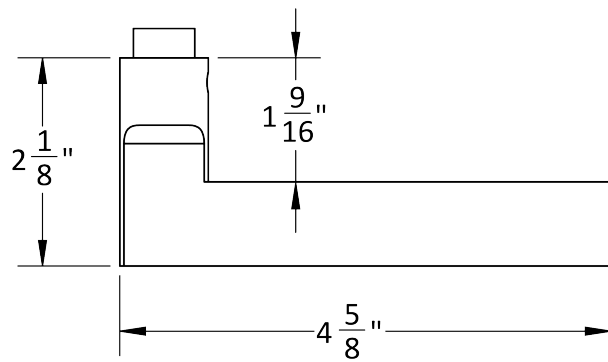
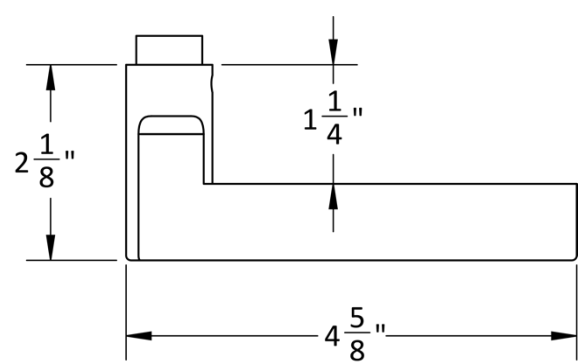
19L LEVER



20L LEVER



21L LEVER

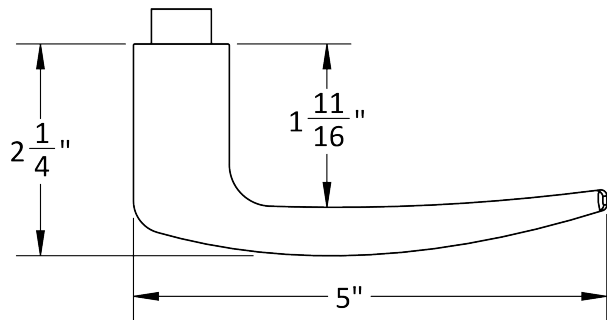




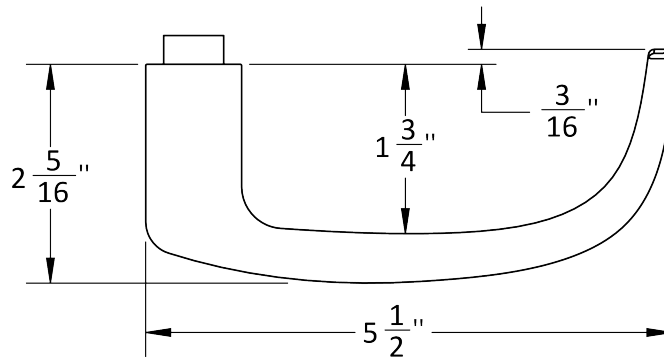
# Accurate Lever Trim Options

## INTERIOR TRIM

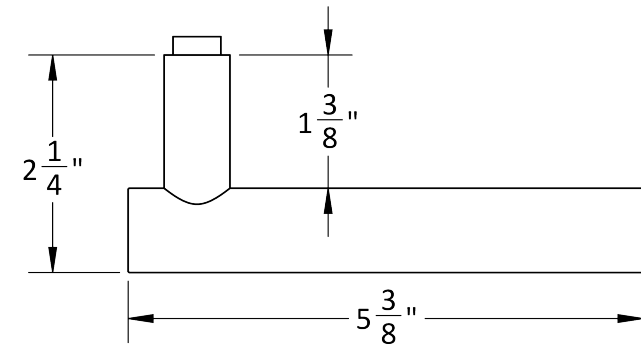
### 29L LEVER



### 39L LEVER

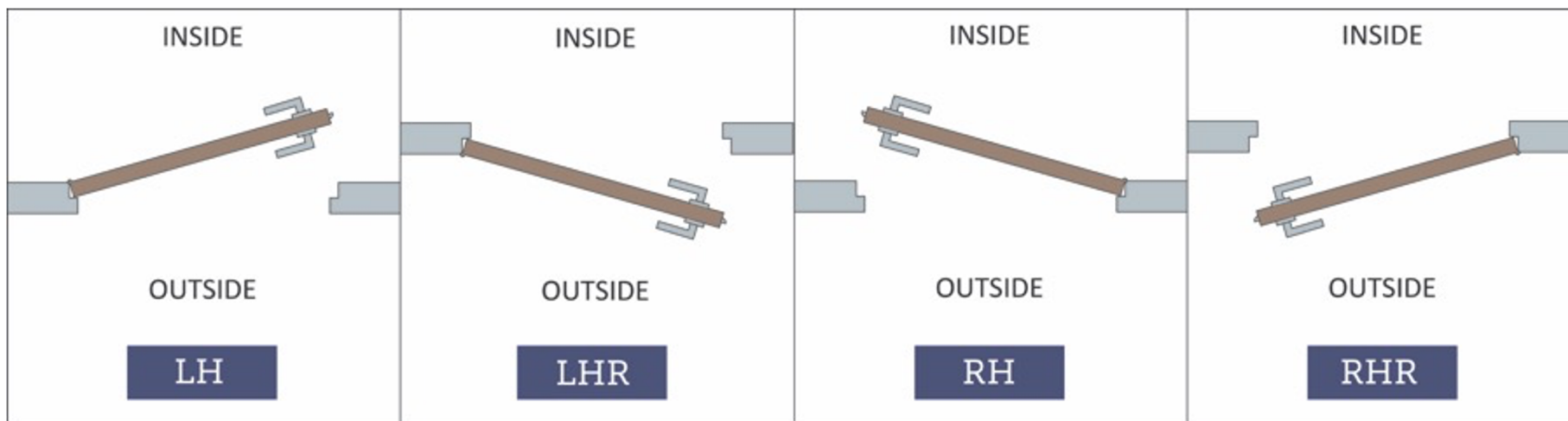


### 72L LEVER



# HOW TO SPECIFY

## HANDING



## FINISHES

**GROUP 1:** US4, US4NL, US32D\*, US26D

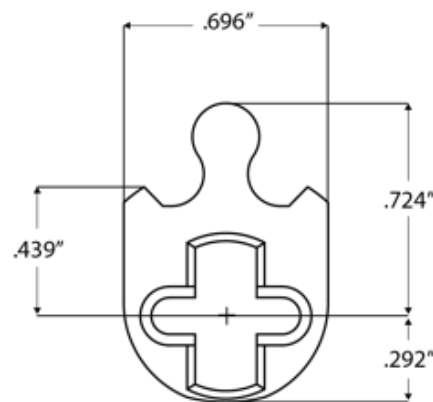
**GROUP 2:** US3, US3NL, US26, US32\*, US9\*, US10\*, US10B, US14, US15, US19

**GROUP 3:** BN, BB, TN, TB, DURO, ESN, US15A, US5

Applicable finishes come standard with [Cerakote Premium Protective Coating](#). Available in gloss or matte.

*\* Trim options (including Accurate Levers) may not be available in US32D, US32, US9, or US10 finish. Please call for assistance.*

## CYLINDERS & KEYING



5000TG Series locks accept any standard American mortise cylinder. For details on required cams and compatibility with other manufacturers' cylinders, please visit: [Accurate Support](#).

# HOW TO SPECIFY

**5000TG.BACKSET.INTERIORTRIM.FINISH[CG or CM].HAND.DOORTHICKNESS**

## FUNCTIONS

See common functions (pg. 6-7)

## BACKSET

1<sup>3</sup>/<sub>4</sub>" , 2, 2<sup>1</sup>/<sub>2</sub>" , 2<sup>1</sup>/<sub>4</sub>" ,  
2<sup>3</sup>/<sub>4</sub>" 3<sup>3</sup>/<sub>4</sub>" , 5" , 6"

## TRIM

Accurate Lever Trim  
(see pg. 8-9)

## FINISHES

See available finishes (pg. 10)

Applicable finishes will come standard with  
[Cerakote Premium Protective Coating](#).

**Please specify: CG for Cerakote Gloss or CM for Cerakote Matte.**

## EXAMPLES

**Thumb Grip | 9100 Series Lock**

E.g.: 5967TG.212.19L.US15.CG.RH.134

**Thumb Grip | 8800 Series Narrow Backset Lock**

E.g.: 5824TG.2.21L.US4.CM.LH.134

**Thumb Grip | 9100SEC High Security Lock**

E.g.: 5948SEC-TG.234. 18L.US10B.CM.RH.134

**Thumb Grip | M9100E Series Motor Drive Electrified Lock with Deadbolt**

E.g.: M5934E-TG.234.39L.US5.CG.LH.134

## SPECIAL OPTIONS AVAILABLE

- [9100SEC High Security Mortise Lock Upgrade](#)
- [Motor Drive Electrified Lock Options](#)
- SS-Security Strikes

**ACCURATE LOCK & HARDWARE  
MANUFACTURERS OF LOCKS AND  
CUSTOM ARCHITECTURAL HARDWARE**

1 Annie Place | Stamford, CT 06902

**P:** 203.348.8865

**F:** 203.348.5234

**E:** sales@accuratelockandhardware.com

**www.accuratelockandhardware.com**



**AMERICAN CRAFTED  
— SINCE 1972 —**