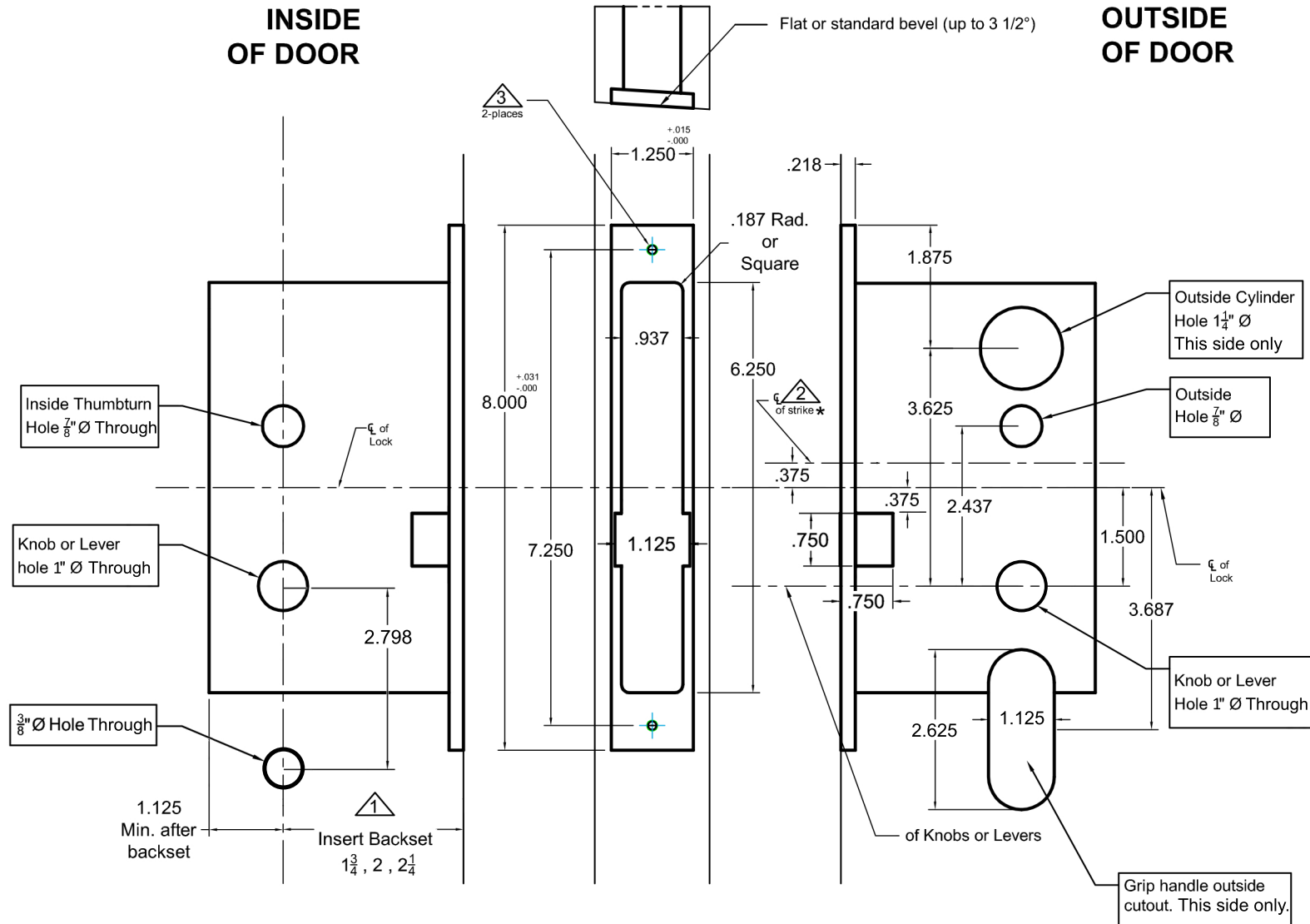


## INSIDE OF DOOR

## OUTSIDE OF DOOR



### Notes:

- Insert backset here  $1\frac{3}{4}$ ", 2",  $2\frac{1}{4}$ "
- ASA strike details on template # T-ALH.ASA.STK
- Prep for #12 wood or 12-24 machine screws

### Additional Notes:

- a) **Responsibility**: Door and frame manufacturers are responsible for providing adequate construction or re-inforcement for proper installation of hardware shown.
- b) Please contact us if a double lip strike is needed - for a proper template
- c) See catalog / spec sheets for additional lock details

**ACCURATE**  
LOCK & HARDWARE  
AMERICAN CRAFTED SINCE 1972

Standard 8800 Accurate 5000TG Trim-Thumbpiece x Lever/Thumbpiece x Knob All Backsets

T-ALH.8800.5000TG