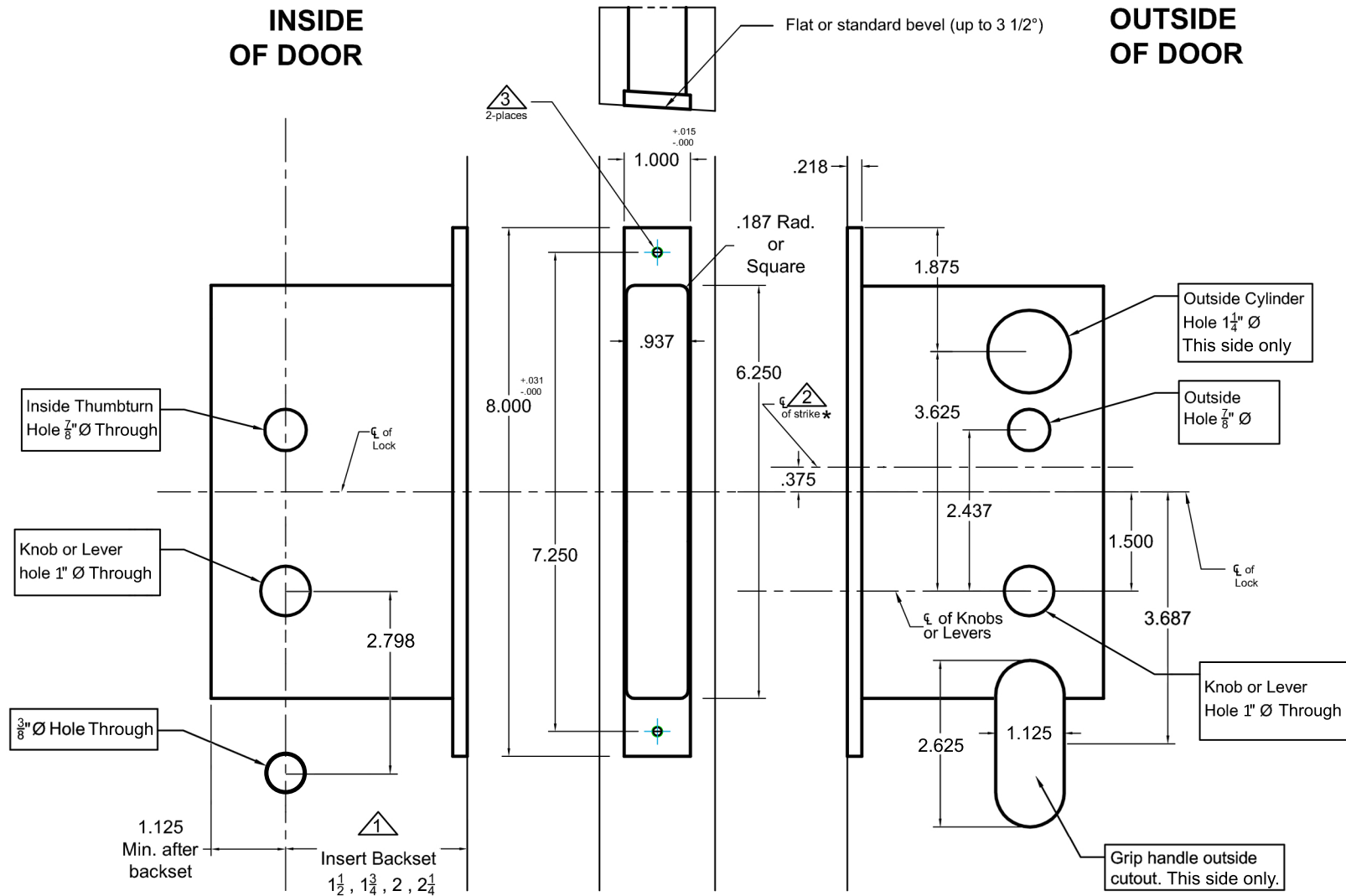


**INSIDE  
OF DOOR**

**OUTSIDE  
OF DOOR**



**Notes:**

- △ Insert backset here 1 1/2", 1 3/4", 2", 2 1/4"
- △ ASA strike details on template # T-ALH.ASA.STK (\*use template #T-ALH.ASADB.STK for #s 8701,8702 and 8703)
- △ Prep for #12 wood or 12-24 machine screws

**Additional Notes:**

- a) **Responsibility:** Door and frame manufacturers are responsible for providing adequate construction or re-inforcement for proper installation of hardware shown.
- b) Please contact us if a double lip strike is needed - for a proper template
- c) See catalog / spec sheets for additional lock details



Standard 8700 Accurate 5000TG Trim-Thumbpiece x Lever/Thumbpiece x Knob All Backsets

T-ALH.8700.5000TG