



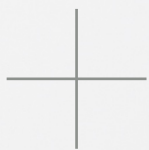
# ACCURATE

## LOCK & HARDWARE

AMERICAN CRAFTED SINCE 1972

### 9143ELR Electrified Latch Retraction Mortise Lock

ACCESSIBLE RESTROOM LOCK



## 9143ELR ACCESSIBLE RESTROOM LOCK

For commercial use, the 9143ELR utilizes a wired push paddle paired with electrified latch retraction to open and close the door behind the user. An ADA thumb turn shunts the push paddle outside, locking the door and allowing for complete privacy. Ideal for bathrooms or any power-operated openings that require accessibility or ADA compliance.

This electrified solution helps maintain privacy while also allowing for ease of access with the integration of a low energy power operator and wired push paddle (by others).



# 9143ELR Accessible Restroom Lock

DOOR IS NORMALLY LATCHED



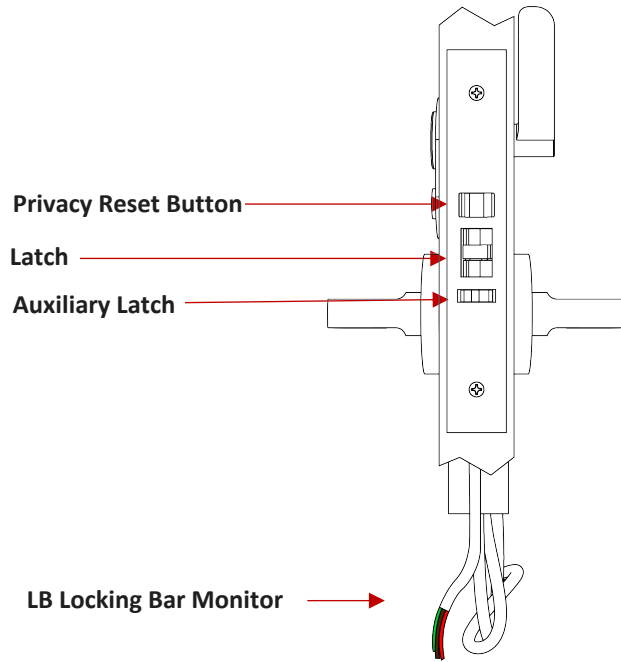
DOOR UNLATCHED WHEN POWER IS APPLIED



**Note:**

- **Lock solenoid DOES NOT support continuous duty.**
- **Access Control Components by Others.**
- **9143ELR lock is ideal to pair with a low energy power operator (by others).**

# 9143ELR Technical Details



## 9143ELR

Latch bolt by handle either side unless outside handle is locked by thumb turn or key.

Thumb turn and key lock or unlock outside handle.

When outside handle is locked, key retracts latch bolt.

Auxiliary latch deadlocks latch bolt.

Outside handle unlocks when inside handle is turned or door closes.

Inside handle always free for egress.

Inside wired push paddle always free for egress.

**9143ELR** for doors  $1\frac{3}{4}$ " minimum ( $1\frac{1}{4}$ " armor front)

UL Listed

Grade 1 Certified to ANSI/BHMA A156.13.2005 Standard

**BACKSETS:**  $2\frac{1}{2}$ ",  $2\frac{3}{4}$ ",  $3\frac{3}{4}$ ", 5" or 6"

### OPERATION:

FAIL SECURE ONLY: Latch retracts when power is applied.

Key Cylinder (by others) will override electronics to retract latch bolt.

Furnished standard with LB Locking Bar Monitor.

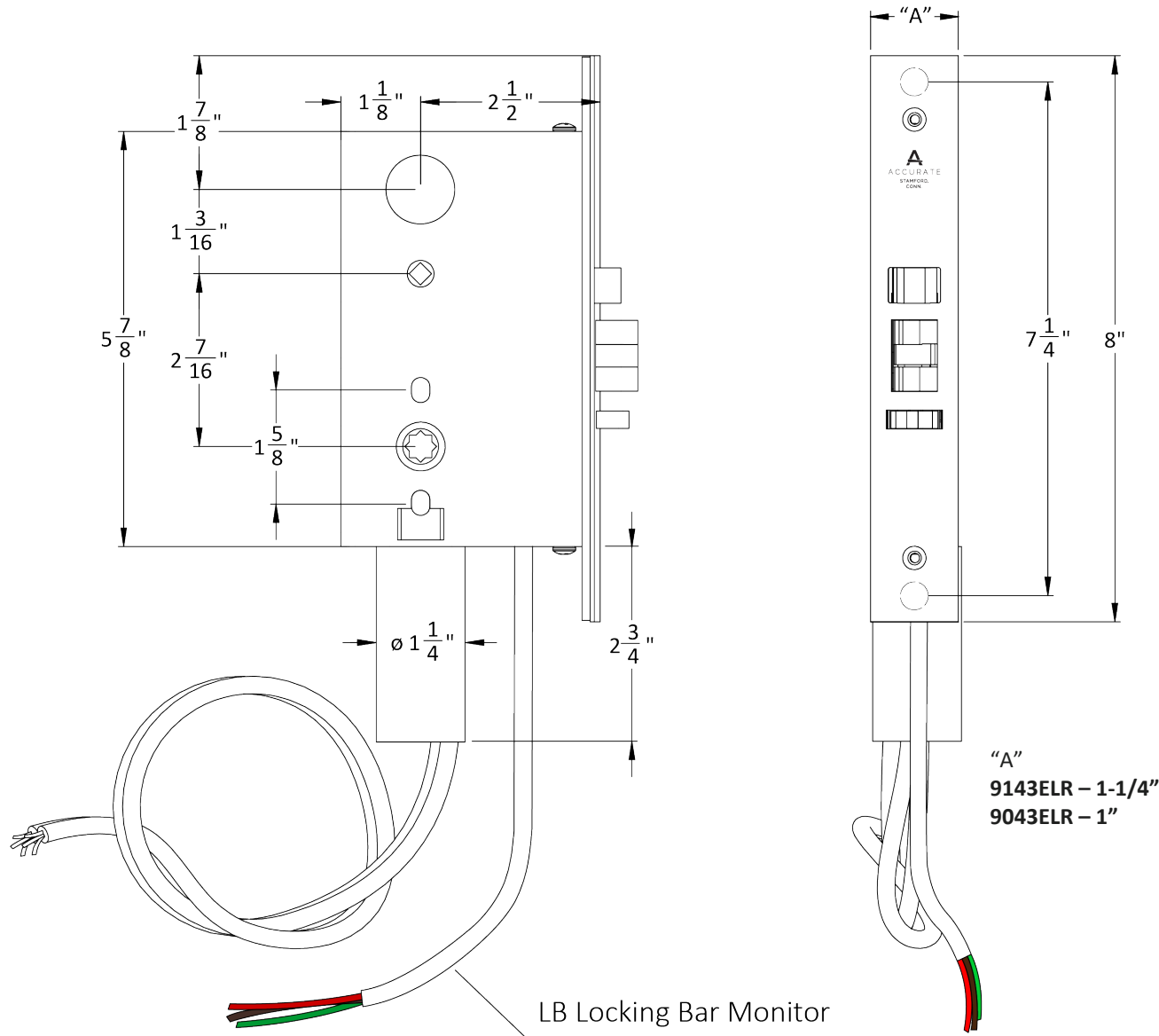
24VDC Operation | 12 Amp Max | Non-Polarized Wire Leads

*Note: A power boost interface module is required ([PM300 by Command Access Technologies](#) recommended paired with [PS220 Power Supply](#), sold by others). Lock solenoid **DOES NOT** support continuous duty.*



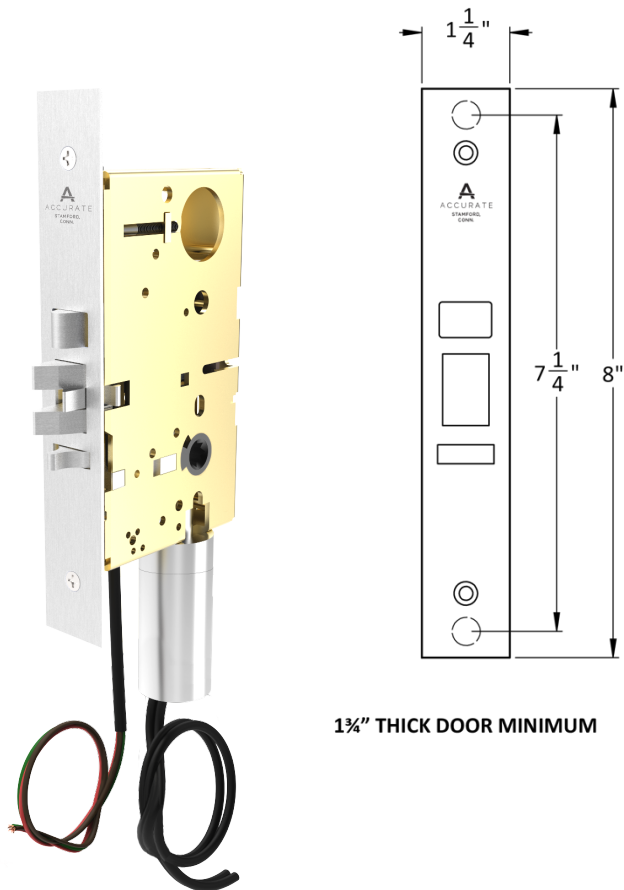


# 9143ELR Dimensions



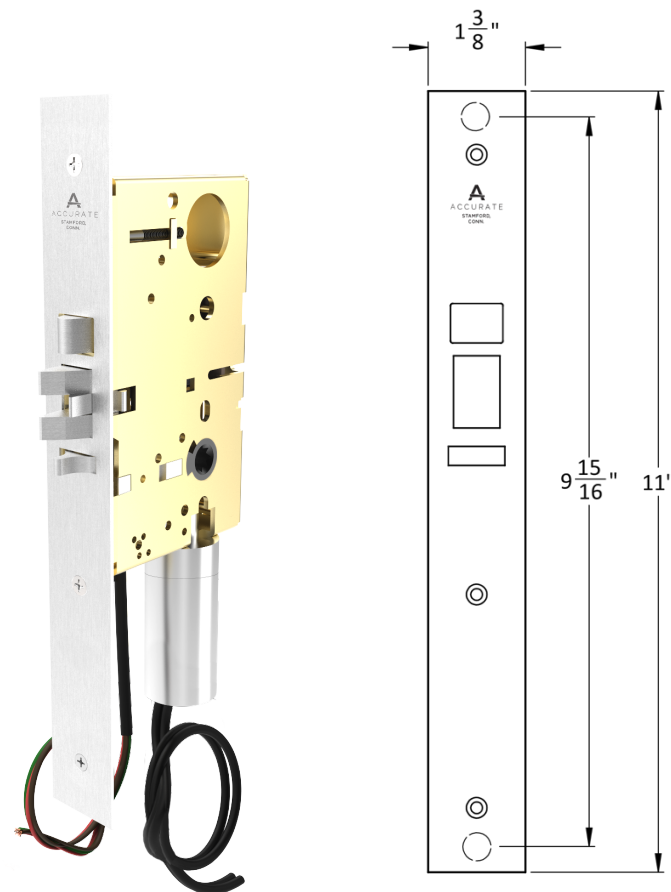
# 9143ELR Specifications

## METAL DOOR STANDARD FACEPLATE



1 1/4" THICK DOOR MINIMUM

## WOOD DOOR LONG FACEPLATE



1 3/8" THICK DOOR MINIMUM

The solenoid is located below the lock, extending  $2\frac{1}{4}$ ". Use on wood doors is possible by specifying M20 Wood Door Kit (an 11" tall,  $1\frac{3}{8}$ " wide faceplate will be supplied).

*Note: Wood door applications are not recommended for high frequency use as they do not properly dissipate heat from the solenoid.*

*Lock solenoid DOES NOT support continuous duty.*

# 9143ELR Operation

## ENTRY

### OPERATION: PERSON WITH A DISABILITY

Person with a disability opens door via wired push paddle (by others):

- Latch bolt is electronically retracted
- Power operator opens door (by others)

Person enters restroom, door closes automatically:

- Person rotates ADA thumb turn to lock outside lever for privacy
- Outside push paddle is deactivated (via LB switch inside lock), door will not open when pressed
- Outside occupancy indicator signals bathroom in use
- Mechanical key override will retract latch

### OPERATION: PERSON WITH NO DISABILITY

- Outside lever or key retracts the latch
- Person rotates ADA thumb turn to lock outside lever for privacy

## EXIT

### OPERATION: PERSON WITH A DISABILITY

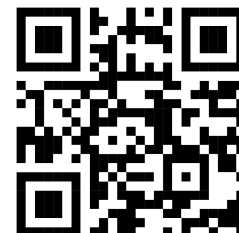
Person with a disability opens door via wired push paddle. They do not need to rotate inside privacy turn back to home position.

- Door opens automatically
- Person exits, door closes automatically
- Outside lever resets to unlocked position upon door closure (via privacy reset button)
- Inside ADA thumb turn rotates back to home position (12 o'clock)
- Outside push paddle is reactivated

### OPERATION: PERSON WITH NO DISABILITY

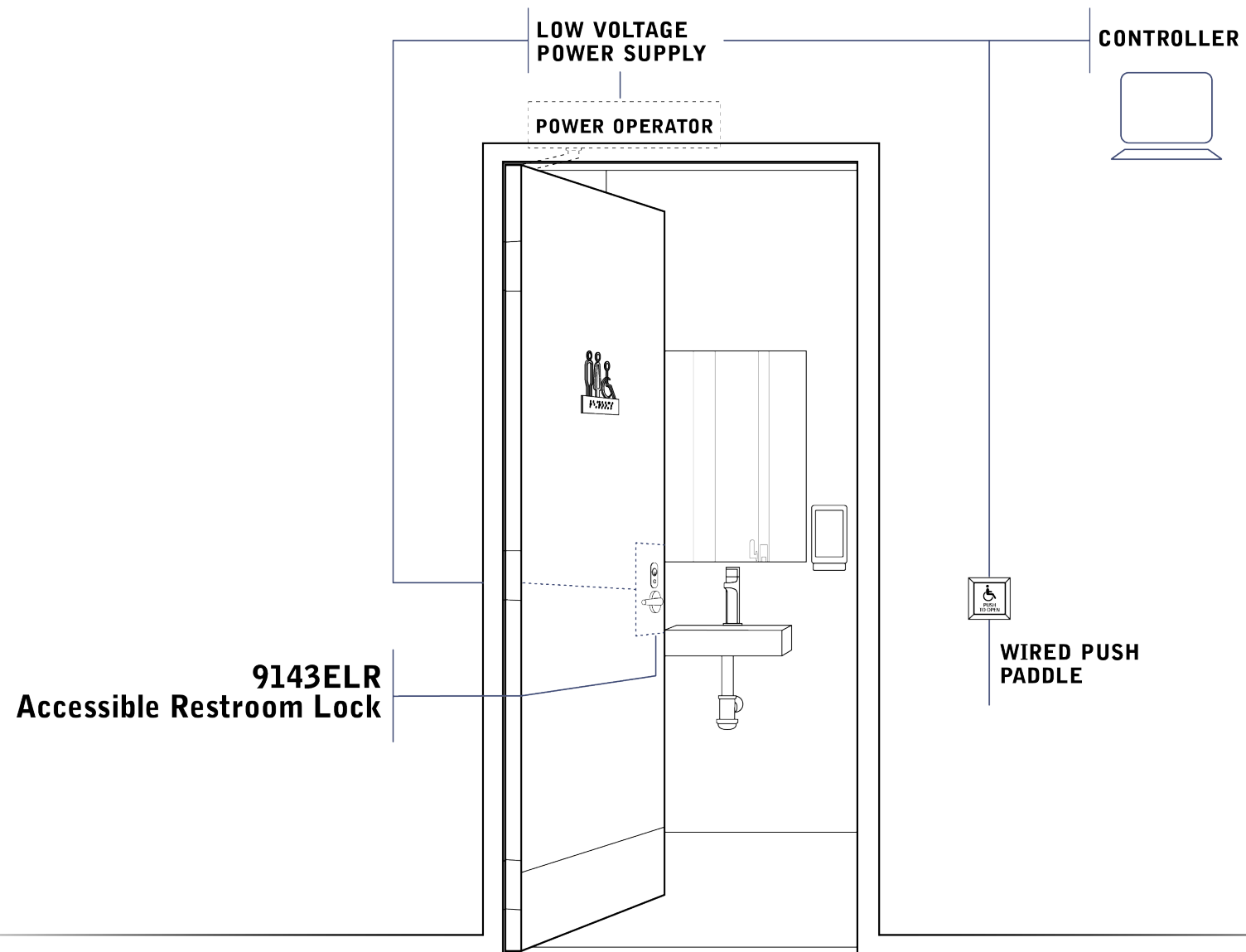
- Person rotates inside lever for egress (outside lever resets to unlocked position)

WATCH THE VIDEO

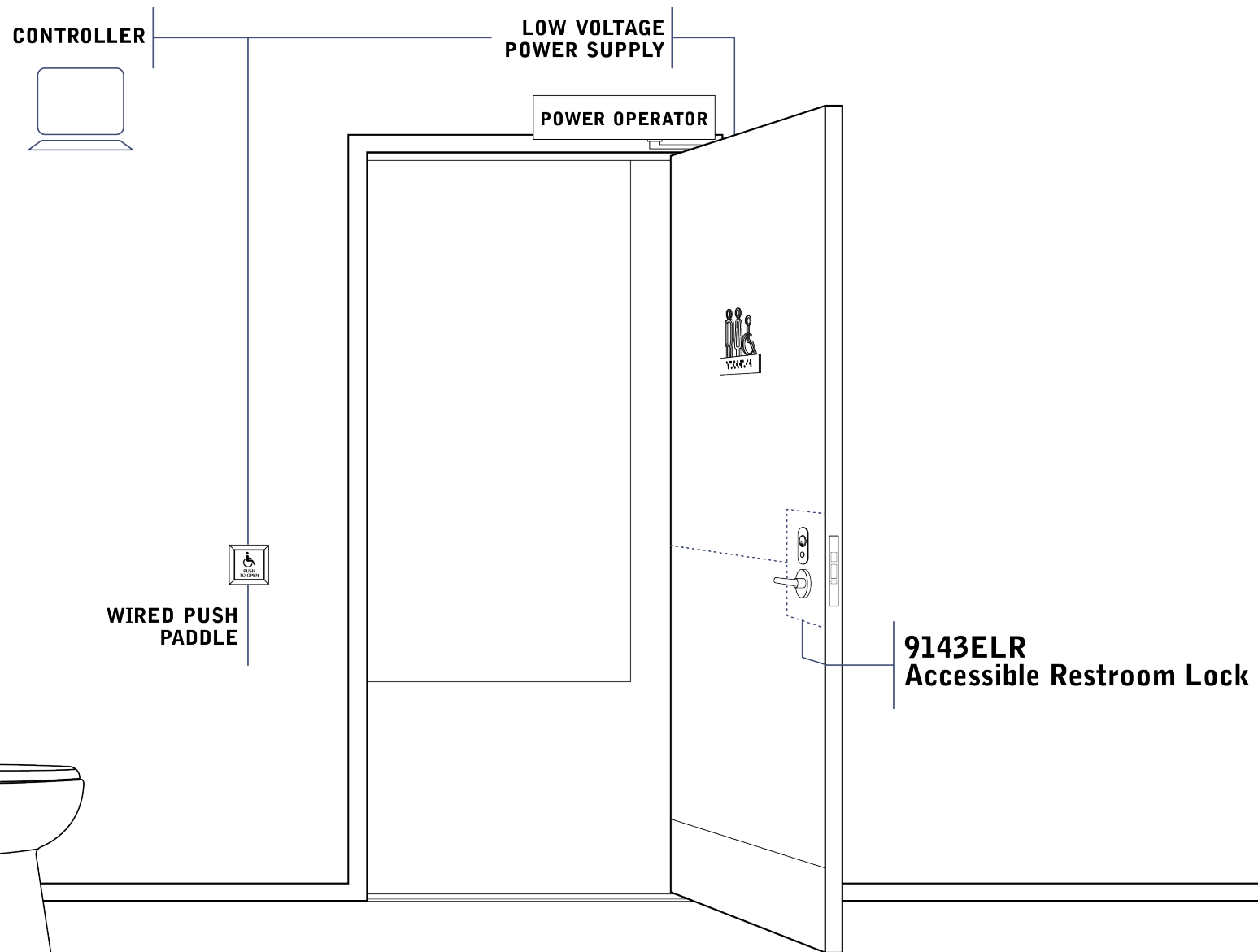




# 9143ELR Operation - Outside

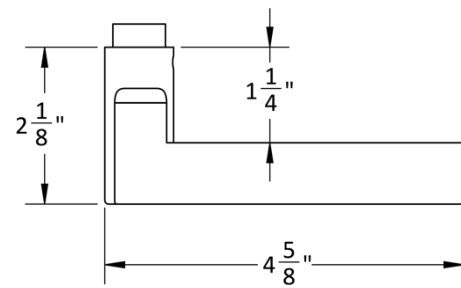


# 9143ELR Operation - Inside

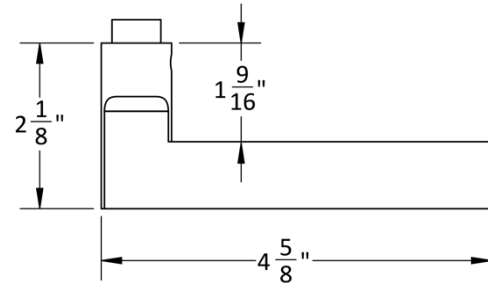


# Accurate Lever Trim

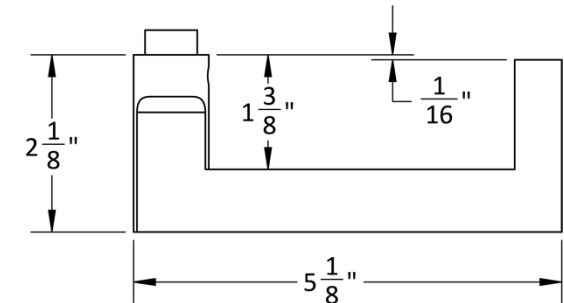
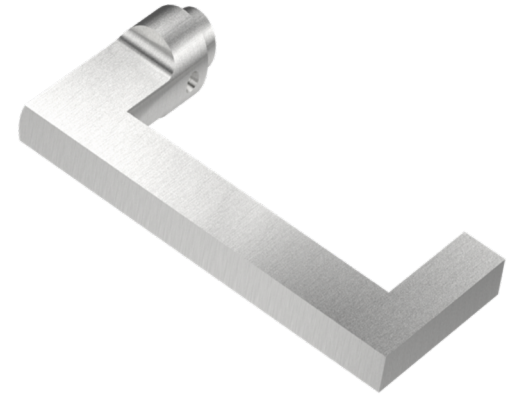
18L LEVER



19L LEVER



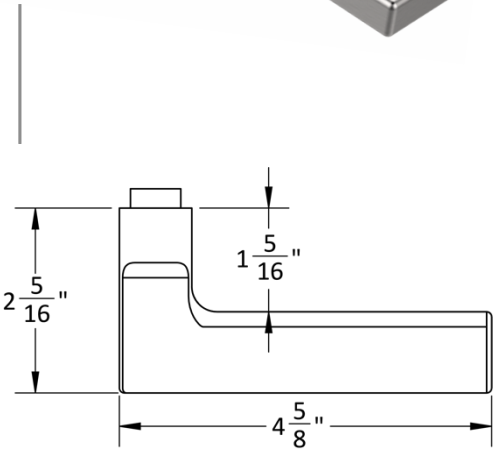
20L LEVER



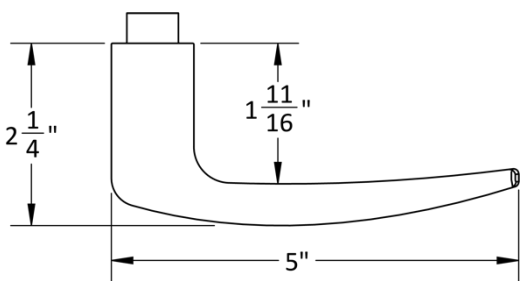


# Accurate Lever Trim

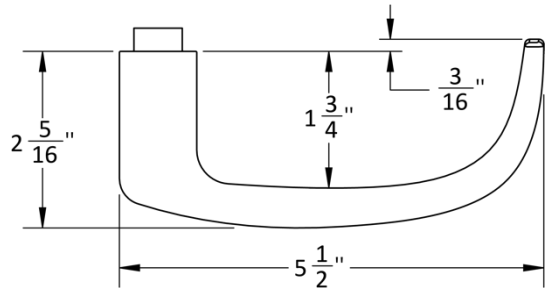
21L LEVER



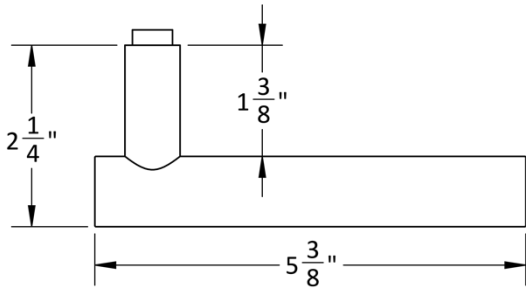
29L LEVER



39L LEVER



72L LEVER



# Accurate Rose Options

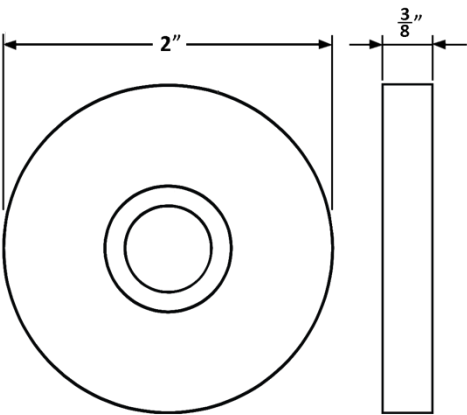
SURFACE MOUNTED SECTIONAL TRIM

1R ROSE

Front



Side

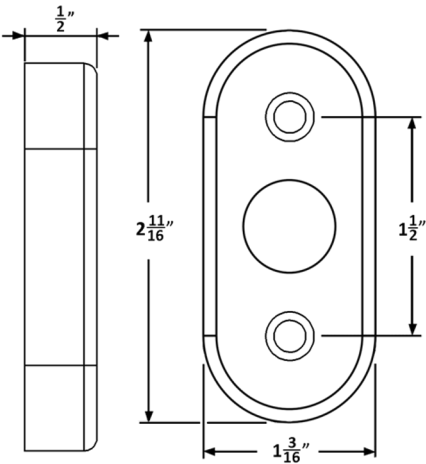


2R ROSE

Side



Front

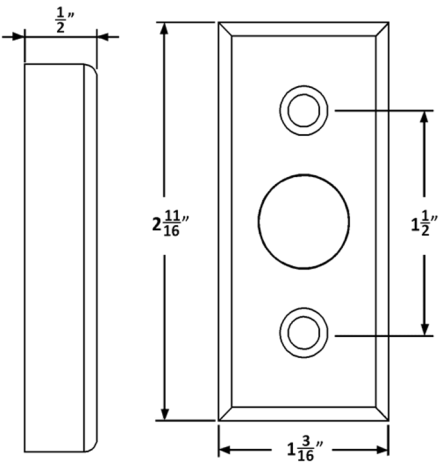


4R ROSE

Side



Front

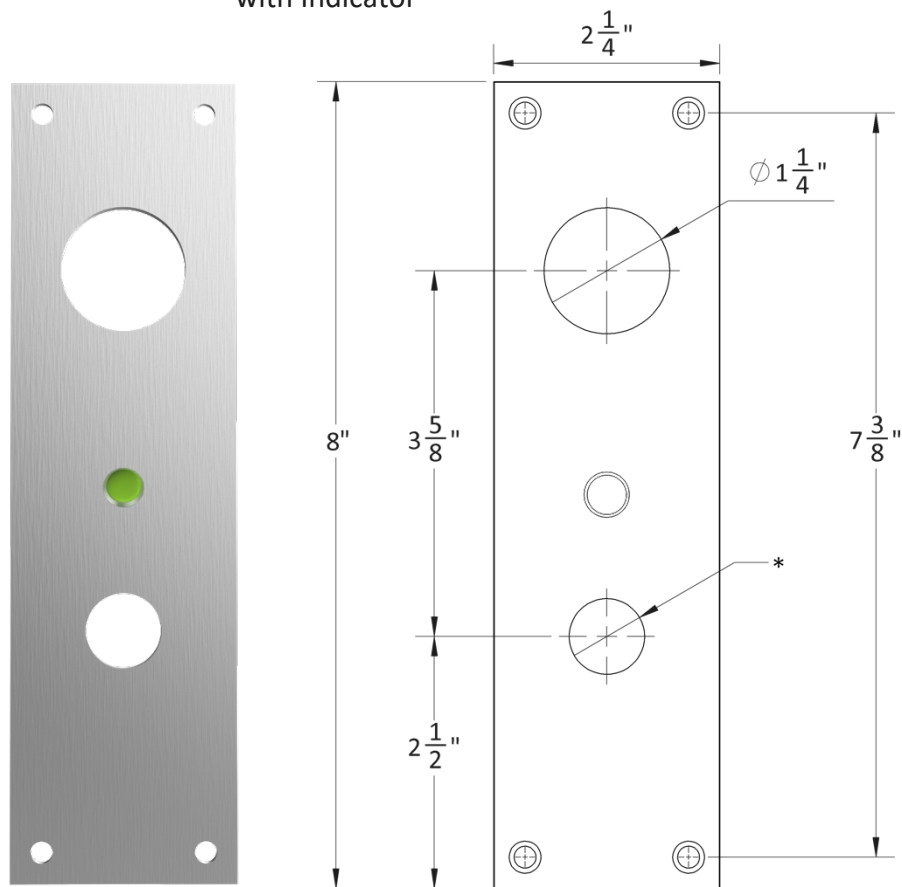


# Accurate Escutcheon Options

## SURFACE MOUNTED

### 1E-Ci

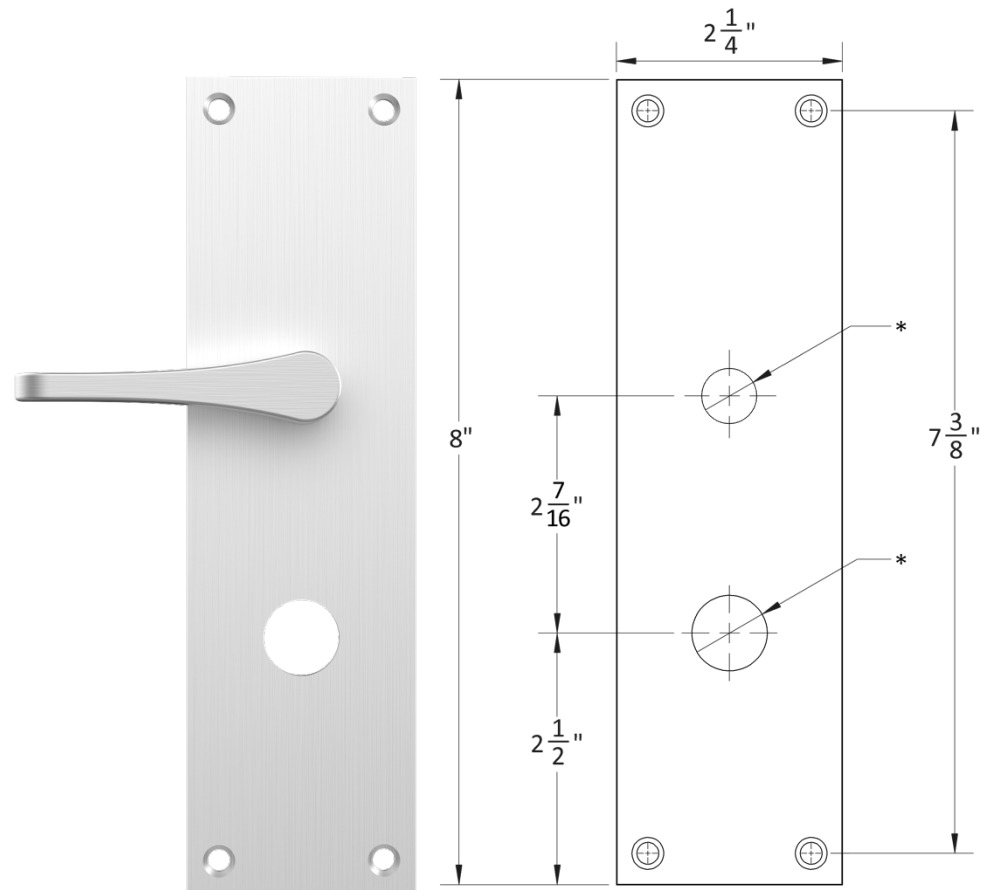
Cylinder Cutout  
with Indicator



\* Dimensions may vary depending on trim

### 1E-ADA

ADA T-turn

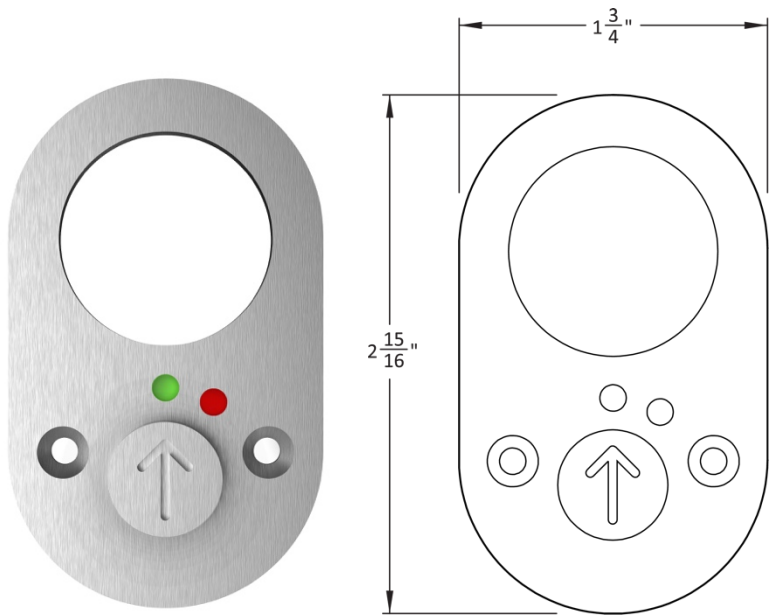


\* Dimensions may vary depending on trim

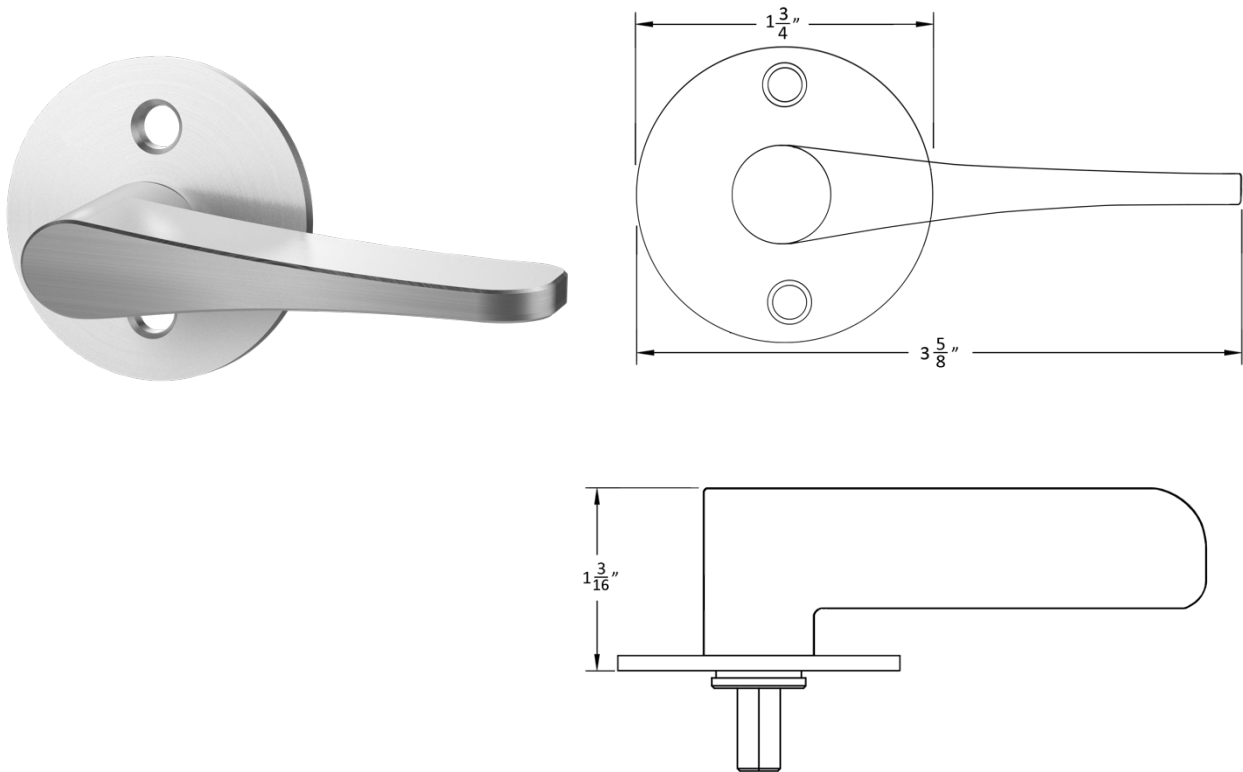


# ADA Thumb Turn + Indicator

9143SCi

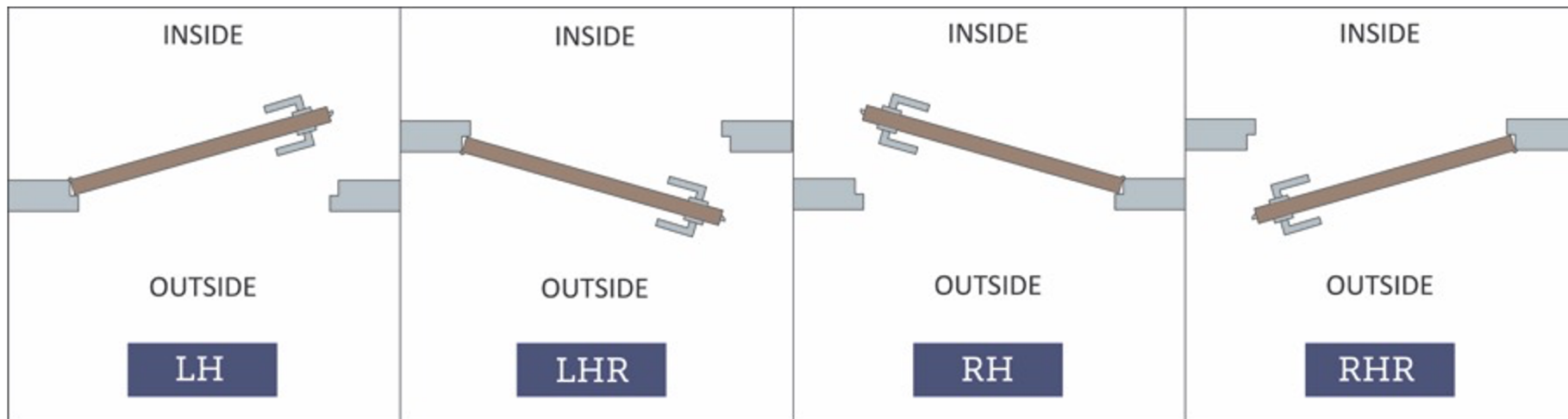


7200ADA



# HOW TO SPECIFY

## HANDING



## FINISHES

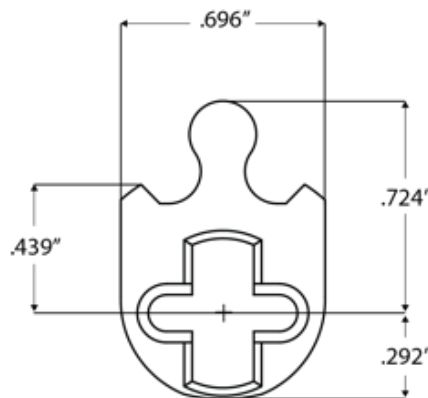
**GROUP 1:** US4, US4NL, US32D\*, US26D

**GROUP 2:** US3, US3NL, US26, US32\*, US9\*, US10\*, US10B, US14, US15, US19

**GROUP 3:** BN, BB, TN, TB, DURO, ESN, US15A, US5

\* Trim options (including Accurate Levers) may not be available in US32D, US32, US9, or US10 finish. Please call for assistance.

To view example of finishes visit: [Accurate Finishes](#).



## CYLINDERS & KEYING

9143ELR Series locks accept any standard American mortise cylinder. For details on required cams and compatibility with other manufacturers' cylinders, please visit: [Accurate Support](#).

# HOW TO SPECIFY

**FUNCTION.BACKSET.TRIM.FINISH.HAND.DOORTHICKNESS.DOOR TYPE**

## FUNCTION

See details (pg. 4)  
*Note: 9143ELR comes standard with a LB Locking Bar Monitor*

## BACKSET

2 1/2", 2 3/4", 3 3/4", 5", 6"

## TRIM

Accurate trim (pg. 10-14)  
 Specify other trim manufacturers or spindle size

## FINISHES

See available finishes (pg. 15)

## DOOR TYPE

Specify if door is metal or wood (pg. 6)  
*If door type is not specified, standard metal faceplate will be supplied.*

## EXAMPLES

**Electrified Latch Retraction | Accessible Restroom | Accurate Trim | Wood Door**

E.g.: 9143ELR.234.29L/2R.US26D.RH.134.WOOD

**Electrified Latch Retraction | Accessible Restroom | Accurate Trim | Metal Door**

E.g.: 9143ELR.234.19L/1E.US19.RH.134.METAL

## SPECIAL OPTIONS AVAILABLE

- SS-Security Strikes
- Compatible with High Security Mortise Lock (Specify 9143ELR-SEC)
- For compatibility with other manufacturers' trim, please call for assistance

### Access Control Components by others:

- **Lock solenoid DOES NOT support continuous duty.**
- **A power boost interface module is required, we recommend: PM300 Power Boost Interface Module by Command Access Technologies paired with PS220 Power Supply**
- **9143ELR lock is ideal to pair with a low energy power operator (by others).**



**ACCURATE LOCK & HARDWARE  
MANUFACTURERS OF LOCKS AND  
CUSTOM ARCHITECTURAL HARDWARE**

1 Annie Place | Stamford, CT 06902

**P:** 203.348.8865

**F:** 203.348.5234

**E:** sales@accuratelockandhardware.com

**www.accuratelockandhardware.com**

**AMERICAN CRAFTED  
— SINCE 1972 —**