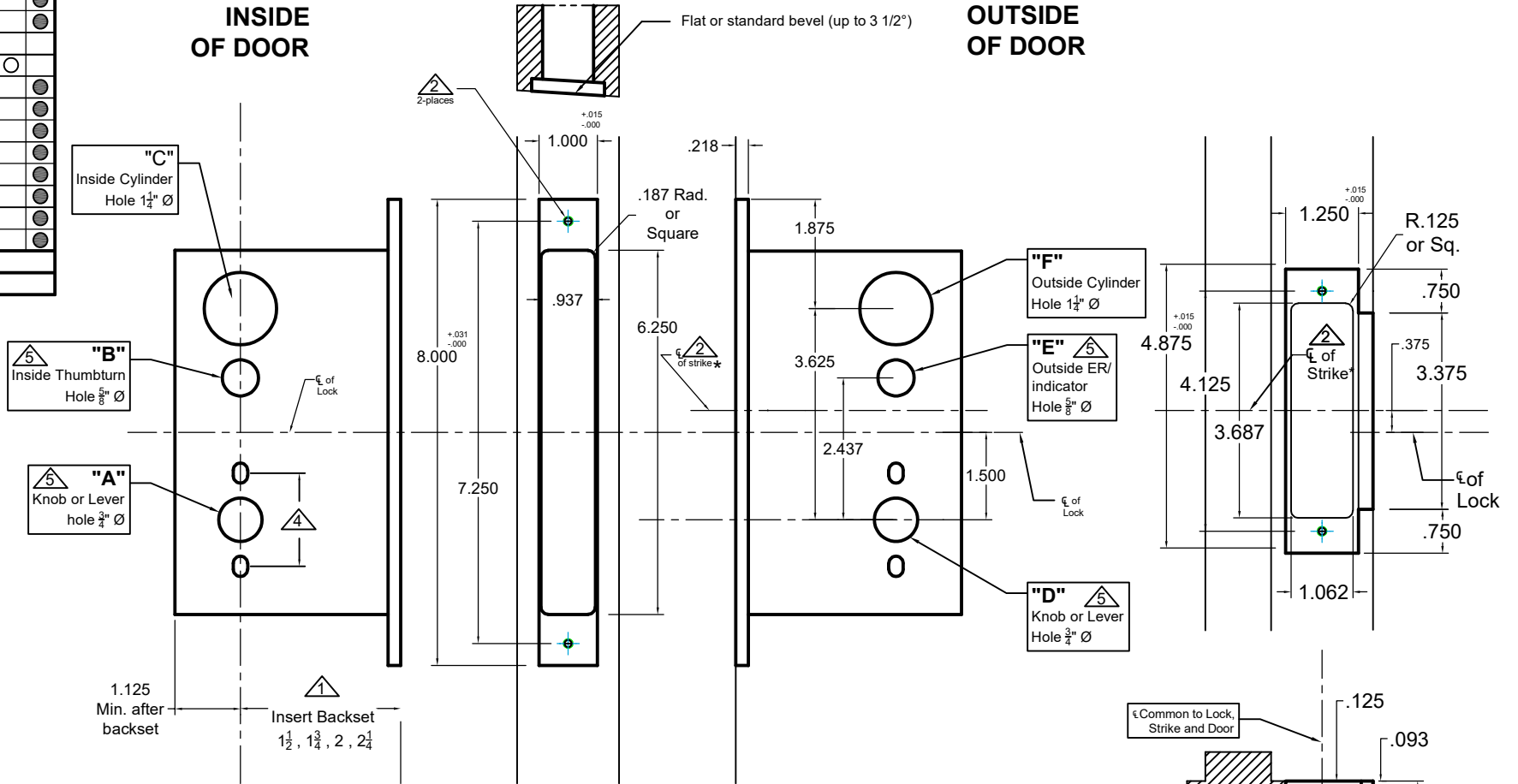


Lock Functions	A	B	C	D	E	F
8700ADL	●			○		
8701*			●			●
8702*			●			●
8703*		●				●
8722	●		●			●
8724	●	●				●
8725	●			●		●
8739	●				○	
8742	●		●			●
8745	●					●
8745S	●		●			●
8748	●	●				●
8749	●	●				●
8756	●					●
8758	●		●			●
8759	●					●
● Required Holes						
○ Optional Holes						

(no strike needed)

INSIDE OF DOOR

OUTSIDE OF DOOR



Notes:

- ▲ Insert backset here $1\frac{1}{2}$ ", $1\frac{3}{4}$ ", 2", $2\frac{1}{4}$ "
 - ▲ ASA strike $\frac{3}{8}$ " above centerline of lock. *NOTE: use template #T-ALH.ASADB.STK for #s 8701,8702 and 8703*
 - ▲ Prep for #12 wood or 12-24 machine screws
 - ▲ Thru bolting holes **ONLY** if required. See trim manufacturers standard template for details.
- Accurate lock's accommodates $1\frac{1}{2}$ " to $1\frac{11}{16}$ " center to centers and up to $\frac{1}{4}$ " dia. post.
If there are any additional questions about the thru-bolting, please contact our office.
- ▲ Knob, thumbturn and ER holes may vary from different trim manufacturers. Please refer to their templates to confirm these dimensions.

Additional Notes:

- a) **Responsibility:** Door and frame manufacturers are responsible for providing adequate construction or re-inforcement for proper installation of hardware shown.
- b) Please contact us if a double lip strike is needed - for a proper template
- c) See catalog / spec sheets for additional lock details



ACCURATE
LOCK & HARDWARE
AMERICAN CRAFTED SINCE 1972

Standard 8700 Lever x Lever or Knob x Knob Template All Backsets

T-ALH.8700.LL