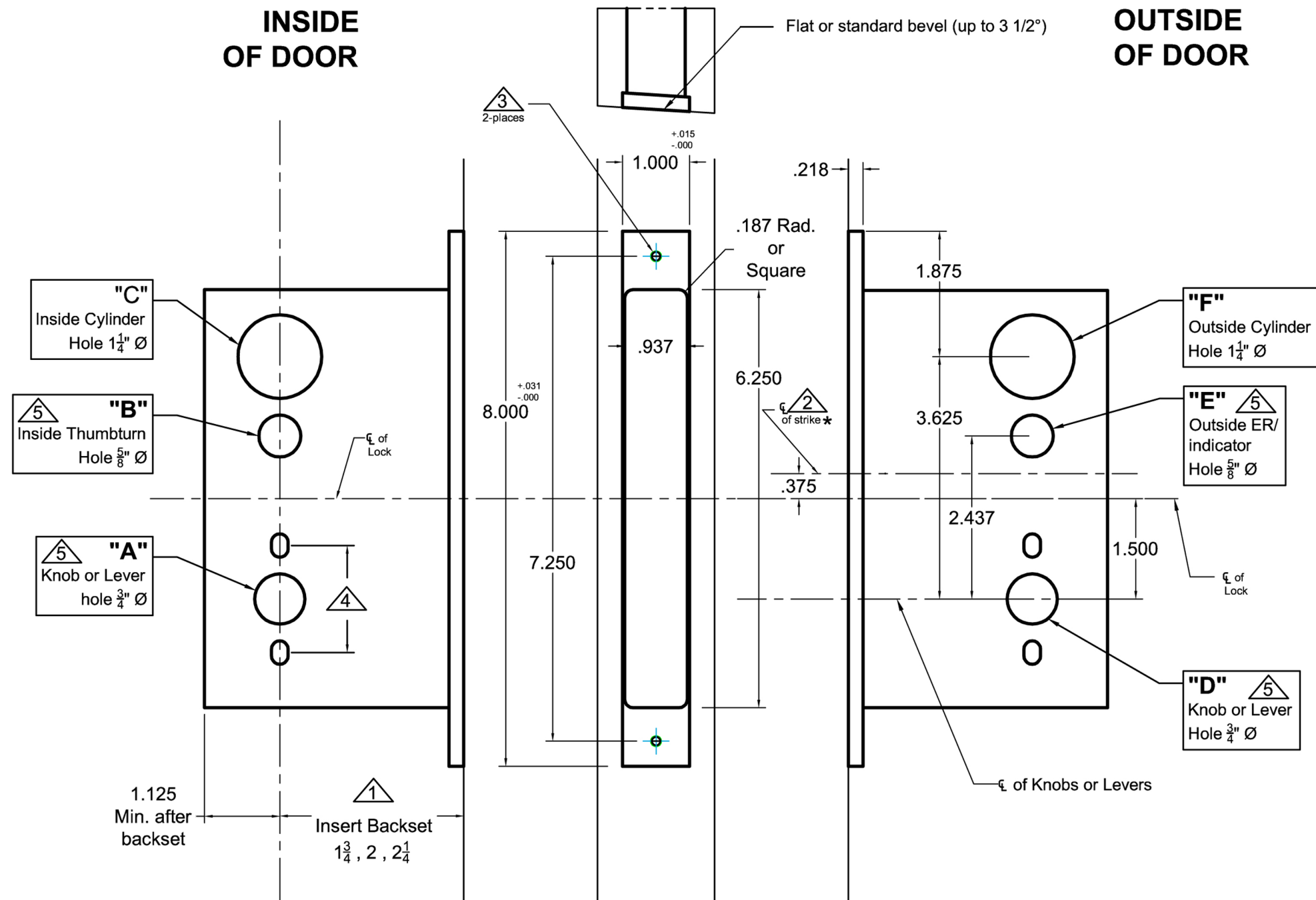


Lock Functions	Inside of door			Outside of door		
	"A" knob/lever = 3/4" dia.	"B" thumbturn = 5/8" dia.	"C" cylinder = 1 1/4" dia.	"D" knob/lever = 3/4" dia.	"E" ER or indicator = 5/8" dia.	"F" cylinder = 1 1/4" dia.
8722UL	●		●	●		●
8724UL	●	●		●		●
8725UL	●			●		
8739UL	●	●		●	○	
8748UL	●			●		●
8756UL	●			●		●
8759UL	●			●		●

● Required Holes  
○ Optional Holes



**Notes:**

- ▲ Insert backset here 1 3/4", 2", 2 1/4"
- ▲ ASA strike details on template # T-ALH.ASA.STK (\*use template #T-ALH.ASADB.STK for #s 8701,8702 and 8703)
- ▲ Prep for #12 wood or 12-24 machine screws
- ▲ Thru bolting holes **ONLY** if required. See trim manufacturers standard template for details.  
Accurate lock's accommodates 1 1/2" to 1 11/16" center to centers and up to 1/4" dia. post.  
If there are any additional questions about the thru-bolting, please contact our office.
- ▲ Knob, thumbturn and ER holes may vary from different trim manufacturers. Please refer to their templates to confirm these dimensions.

**Additional Notes:**

- a) **Responsibility:** Door and frame manufacturers are responsible for providing adequate construction or re-inforcement for proper installation of hardware shown.
- b) Please contact us if a double lip strike is needed - for a proper template
- c) See catalog / spec sheets for additional lock details



Standard 8700UL Lever x Lever or Knob x Knob- All Backsets

T-ALH.8700UL.LL