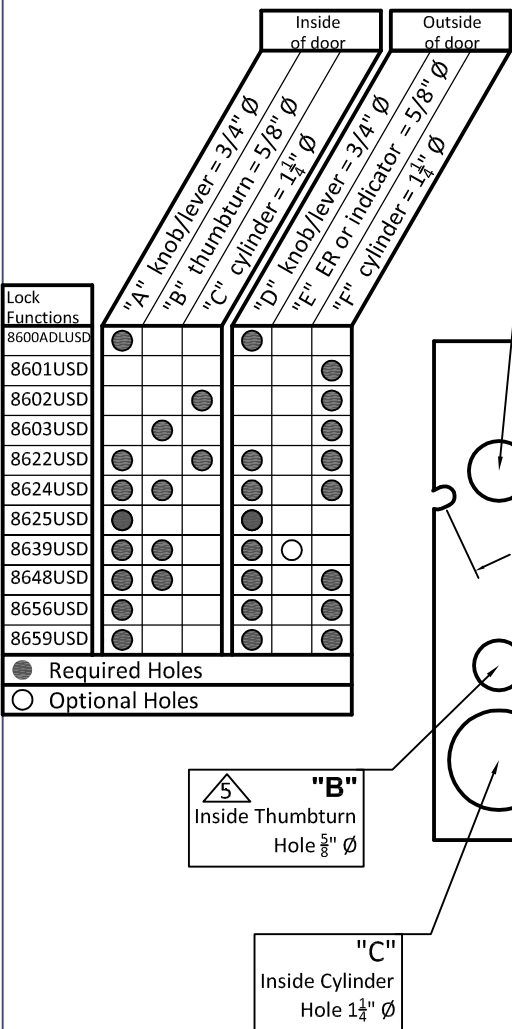
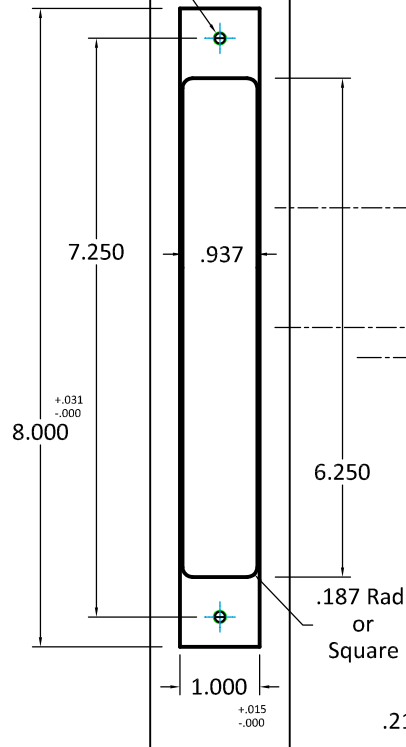


Lock Functions	Inside of door		Outside of door	
8600ADLUSD				
8601USD				
8602USD				
8603USD				
8622USD				
8624USD				
8625USD				
8639USD				
8648USD				
8656USD				
8659USD				
● Required Holes				
○ Optional Holes				



## INSIDE OF DOOR

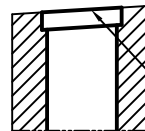
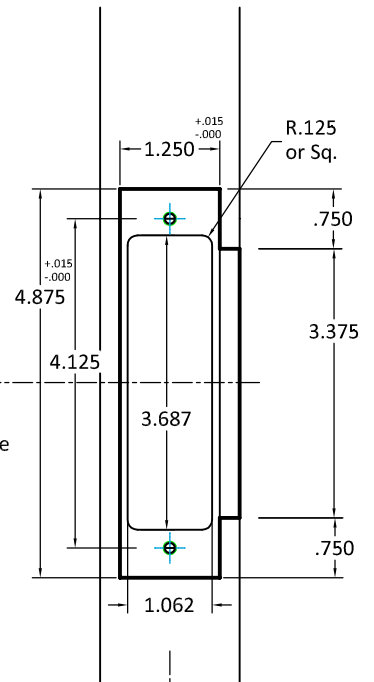
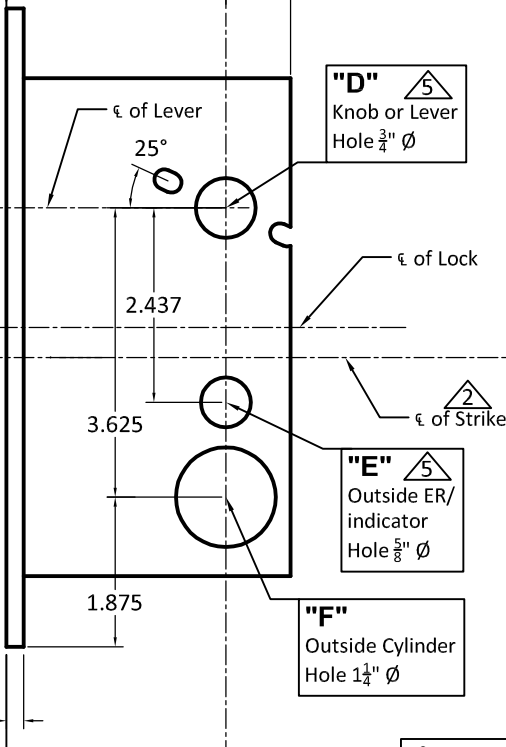
3  
4-places



## OUTSIDE OF DOOR

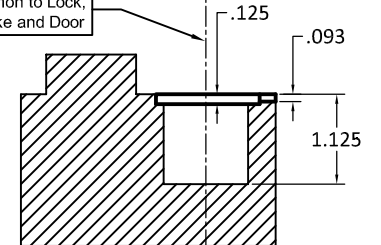
1  
Insert Backset  
 $1\frac{1}{4}, 1\frac{1}{2}, 1\frac{3}{4}, 2, 2\frac{1}{4}$

$\frac{13}{16}$   
Min After B.S.



Flat or standard bevel  
(up to 3 1/2°)

$\epsilon$  Common to Lock, Strike and Door



### Important Notes:

- △ Insert backset here  $1\frac{1}{4}"$ ,  $1\frac{1}{2}"$ ,  $1\frac{3}{4}"$ , 2",  $2\frac{1}{4}"$
  - △ ASA strike mounted  $\frac{3}{8}"$  below centerline of lock
  - △ Prep for #12 wood or 12-24 machine screws (Lock and Strike)
  - △ Thru bolting holes **ONLY** if required. See trim manufacturers standard template for details.
- Accurate lock's accommodates  $1\frac{1}{2}"$  to  $1\frac{11}{16}"$  center to centers and up to  $\frac{1}{4}"$  dia. post.
- If there are any additional questions about the thru-bolting, please contact our office.
- △ Knob, Thumbturn and ER holes may vary from different trim manufacturers. Please refer to their templates to confirm these dimensions.

### Additional Notes:

- a) **Responsibility:** Door and frame manufacturers are responsible for providing adequate construction or re-inforcement for proper installation of hardware shown.
- b) Please contact us if a double lip strike is needed - for a proper template
- c) See catalog / spec sheets for additional lock details

T-ALH.8600USD.LL

**ACCURATE**  
LOCK & HARDWARE  
AMERICAN CRAFTED SINCE 1972

Standard 8600USD (UPDSIDE DOWN)  
Lever x Lever Template  
All Backsets