

## M9134E OPERATING INSTRUCTIONS

### ACSI M1520M-9134

Mortise lock with motorized locking/unlocking.

#### KEY FUNCTION

The latch bolt may be momentarily retracted by key even if the lockset is electrically locked.

#### ELECTRICAL SPECIFICATIONS:

Provides 12/24V Fail Safe/Fail Secure Operation with low power consumption.

**VOLTAGE:** 12-24V AC/DC (11V – 30V)

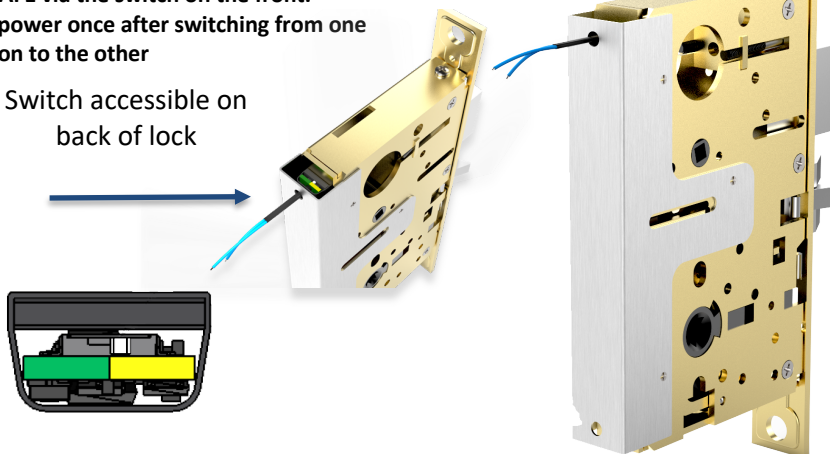
**CURRENT:** 250mA MAX Inrush, 10mA MAX Holding

Non-polarized Leads

Distance 12V/24V	Wire Gauge
125'/250'	22
200'/400'	20
300'/600'	18
500'/1000'	16
750'/1500'	14
1250'/2500'	12

Lock is furnished as FAIL SECURE and can be easily changed to FAIL SAFE via the switch on the front. Cycle power once after switching from one function to the other

Switch accessible on back of lock



GREEN:      YELLOW:  
 FAIL SAFE      FAIL SECURE