



ACCURATE
LOCK & HARDWARE
AMERICAN CRAFTED SINCE 1972

M1700E Motor Drive Electrified Narrow Backset Mortise Lock

ACCESS CONTROL FOR ULTRA NARROW STILE DOORS



MOTOR DRIVE ELECTRIFIED NARROW BACKSET MORTISE LOCK

This ultra narrow backset lock is the newest introduction to our electromechanical line of mortise locks is designed for use on glass doors with aluminum stiles and eliminates the need for unsightly electric strikes. Pair with a variety of decorative or commercial trim options to do more with less.

M1700E

BACKSET: 1¹/₈"

CASE: Heavy gauge, stainless steel

ARMOR FRONT: Brass, bronze, aluminum or stainless steel, finished as required. Faceplate options: flat (default), radius or beveled

LATCH BOLT: Brass or stainless steel, solid type 1/2" throw

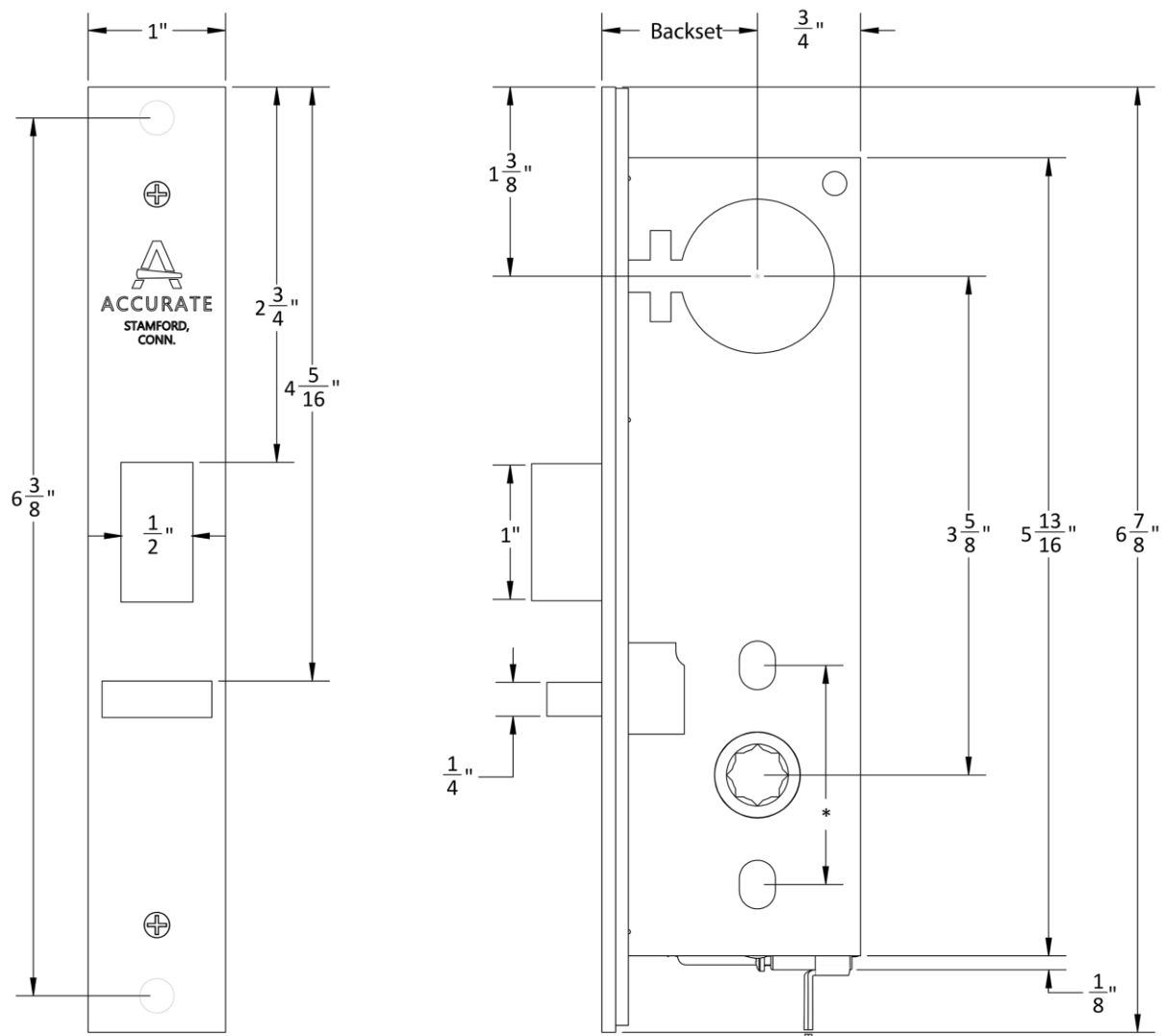
STRIKE: 4⁷/₈" ASA

HUBS: Available in different sizes to be compatible with various trim

DUST BOX: Brass, stainless steel or oil rubbed bronze

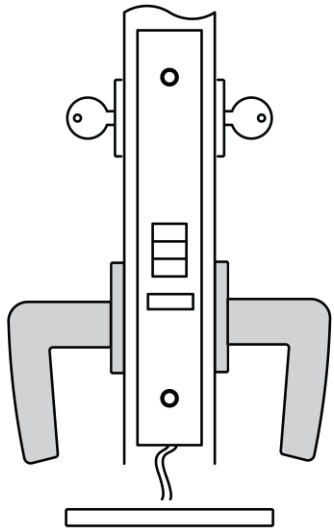


M1700E Dimensions



* To accommodate through-bolting
 1 1/2" - 1 1/16" center to center

M1700E Technical Details

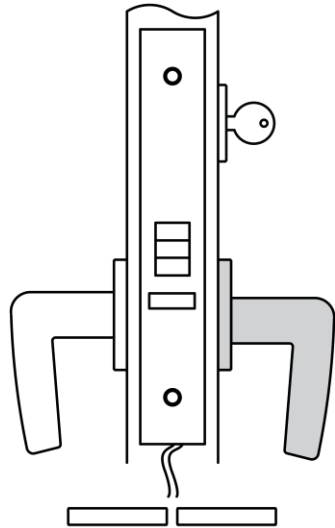


M1758E
INSTITUTIONAL OR ASYLUM

Latch bolt by key either side.
Auxiliary latch deadlocks latch bolt.

FAIL SECURE OPERATION*: Inside and outside trim unlocked when power is applied and locked when power is removed.

FAIL SAFE OPERATION: Inside and outside trim locked when power is applied and unlocked when power is removed. Lockset will unlock in the event of power failure.



M1759E
STOREROOM

Inside trim always free.
Latch bolt by key outside.
Auxiliary latch deadlocks latch bolt.

FAIL SECURE OPERATION*: Outside trim unlocked when power is applied and locked when power is removed.

FAIL SAFE OPERATION: Outside trim locked when power is applied and unlocked when power is removed. Lockset will unlock in the event of power failure.

BACKSET: 1¹/₈”

OPERATION:

Key Cylinder (by others) will override electronics to retract latch bolt.
12-24 AC/DC VDC (11V – 30V Operating Range)
500mA MAX Inrush
200mA MAX Holding
Non-polarized Leads

Accurate Lever Trim

14L LEVER



15L LEVER



16L LEVER



17L LEVER



18L LEVER



19L LEVER



20L LEVER



21L LEVER



[CLICK TO SEE MORE INFO ON TRIM OPTIONS](#)

Accurate Trim

29L LEVER



2R ROSE

Side



Inside



Outside



**1E-175
NARROW ESCUTCHEON**



72L LEVER



4R ROSE

Side

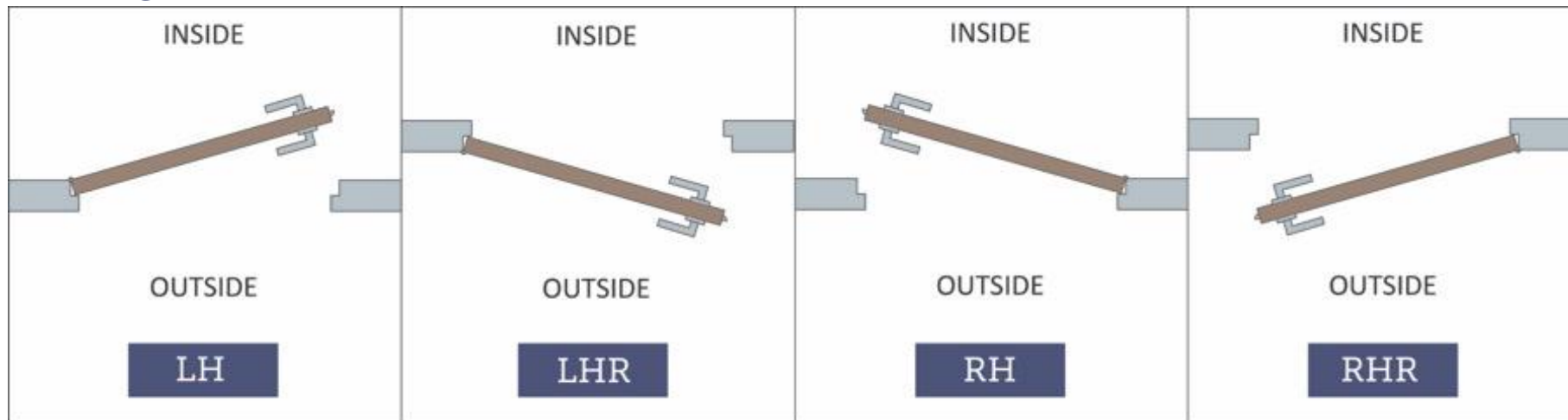


Outside



HOW TO SPECIFY

HANDING



FINISHES

GROUP 1: US4, US4NL, US32D*, US26D

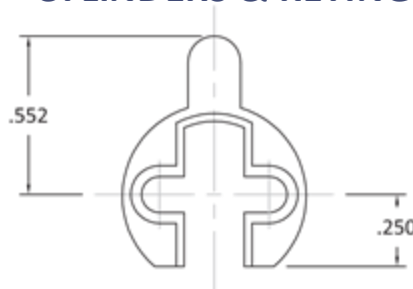
GROUP 2: US3, US3NL, US26, US32*, US9*, US10*, US10B, US14, US15, US19

GROUP 3: BN, BB, TN, TB, DURO, ESN, US15A, US5

* Trim options (including Accurate Levers) may not be available in US32D, US32, US9, or US10 finish. Please call for assistance.

To view example of finishes visit: [Accurate Finishes](#).

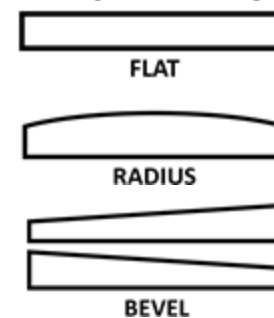
CYLINDERS & KEYING



M1700E Series locks accept any standard American mortise cylinder. For details on required cams and compatibility with other manufacturers' cylinders, please visit: [Accurate Support](#).

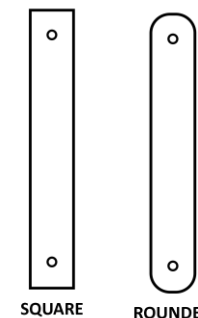
FACEPLATE

FACEPLATE EDGE



Flat Faceplate Edge furnished unless otherwise specified.
Bevel Faceplate determined by handing.

FACEPLATE CORNERS



Square Faceplate Corners furnished unless otherwise specified.

HOW TO SPECIFY

FUNCTION.FACEPLATE.BACKSET.TRIM.FINISH.HAND.DOORTHICKNESS

FUNCTIONS

See available functions (pg. 5)

FACEPLATE

For Faceplate Edge:

Specify: RF for Radius Edge, BF for Beveled Edge (determined by handing), otherwise Flat Faceplate Edge will be supplied.

For Faceplate Corners:

Specify RC for Round Corners, otherwise Square Corners will be supplied.

BACKSET

1 1/8"

TRIM

Accurate trim (pg. 6-7)

Specify other trim manufacturers or spindle size.

FINISHES

See available finishes (pg. 10)

EXAMPLES

Electrified Lock | Storeroom | Radius Faceplate Round Corners | Accurate Trim

E.g.: M1759E.RFRC.118.29L/2R.US26D.RH.134

Electrified Lock | Asylum | Flat Faceplate Round Corners | Accurate Trim

E.g.: M1758E.RC.118.15L/1E-175.US4.LH.134

Electrified Lock | Storeroom | Beveled Faceplate Square Corners | Other Manufacturers' Narrow Backset Trim

E.g.: M1759E.BF.118.LxL.8mm.US26D.RH.138

SPECIAL OPTIONS AVAILABLE

- Set up for levers by other manufacturers
- Sliding door functionality available
- Cylinders are not included, please specify separately.

**Note: For compatibility with other manufacturers' trim please call for assistance*

**ACCURATE LOCK & HARDWARE
MANUFACTURERS OF LOCKS AND
CUSTOM ARCHITECTURAL HARDWARE**

1 Annie Place | Stamford, CT 06902

P: 203.348.8865

F: 203.348.5234

E: sales@accuratelockandhardware.com

www.accuratelockandhardware.com

