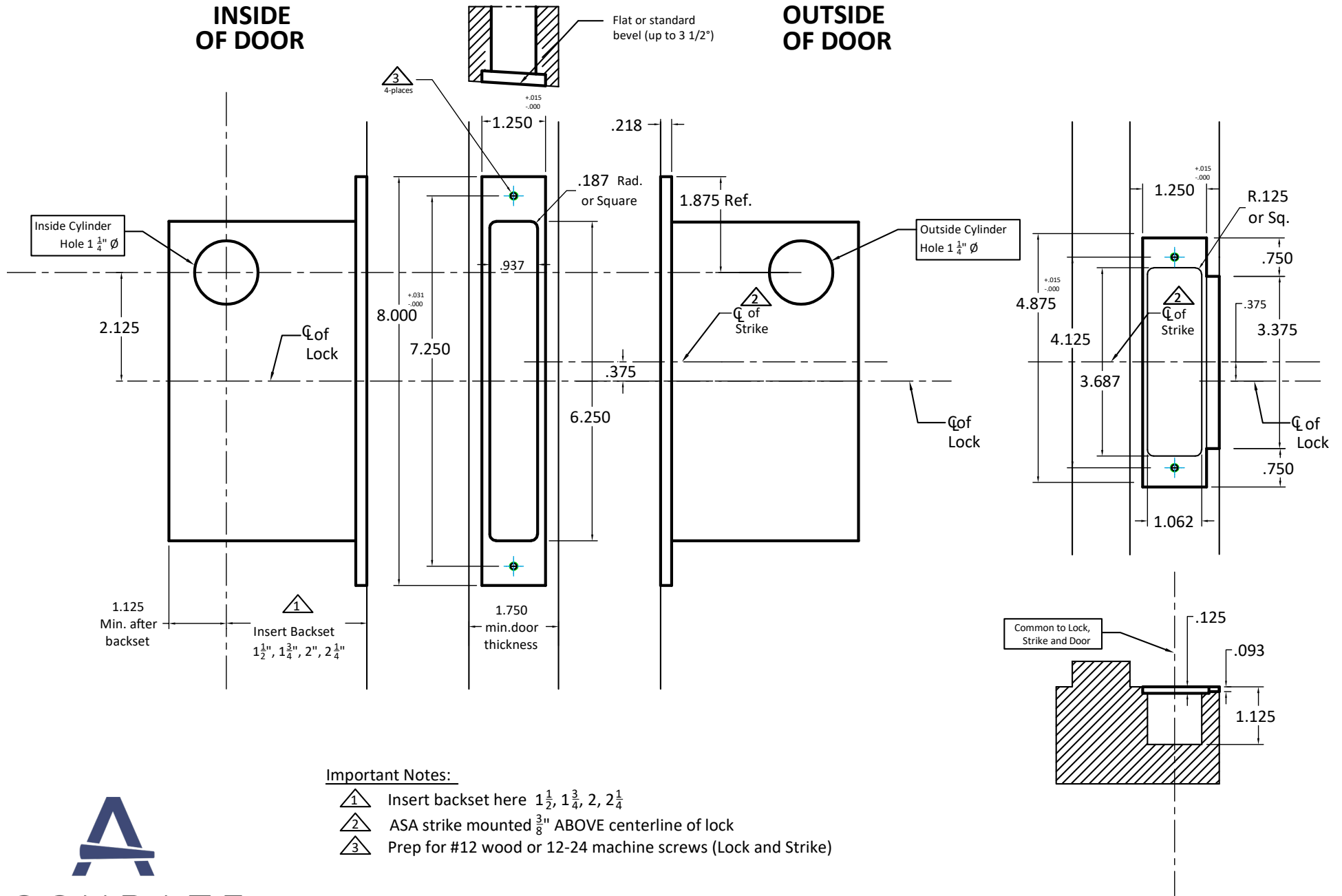


## INSIDE OF DOOR

## OUTSIDE OF DOOR



### Important Notes:

- ① Insert backset here 1 1/2", 1 3/4", 2", 2 1/4"
- ② ASA strike mounted 3/8" ABOVE centerline of lock
- ③ Prep for #12 wood or 12-24 machine screws (Lock and Strike)

### Additional Notes:

- a) **Responsibility:** Door and frame manufacturers are responsible for providing adequate construction or re-inforcement for proper installation of hardware shown.
- b) Please contact us if a double lip strike is needed - for a proper template
- c) See catalog / spec sheets for additional lock details

**ACCURATE**  
LOCK & HARDWARE  
AMERICAN CRAFTED SINCE 1972

Standard 8822ARL  
All Backsets

T-ALH.8822ARL