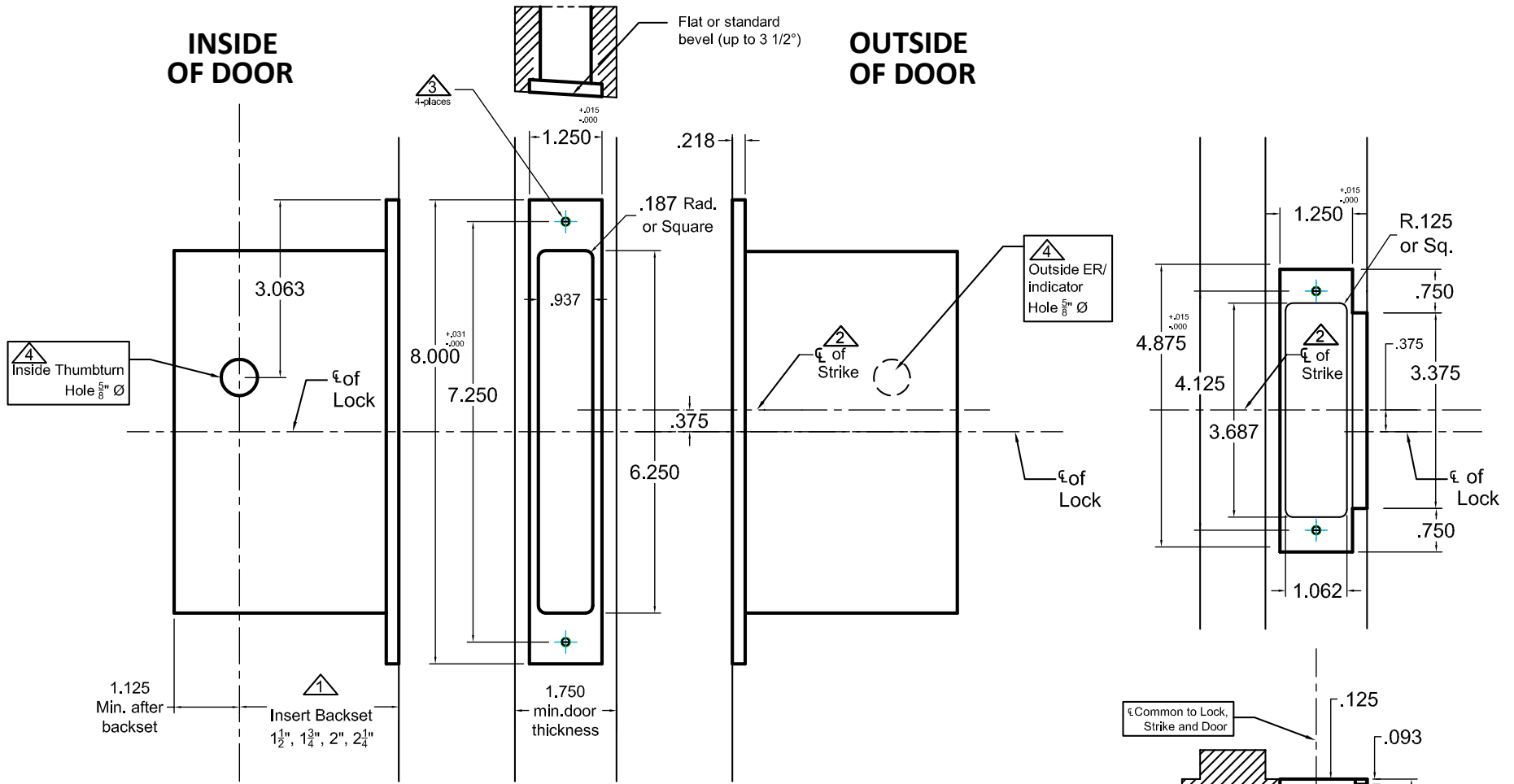


INSIDE  
OF DOOR

OUTSIDE  
OF DOOR



**Important Notes:**

- ① Insert backset here  $1\frac{1}{2}$ ",  $1\frac{3}{4}$ ", 2",  $2\frac{1}{4}$ "
- ② ASA strike mounted  $\frac{3}{8}$ " ABOVE centerline of lock
- ③ Prep for #12 wood or 12-24 machine screws (Lock and Strike)
- ④ Thumbturn optional ER holes may vary from different trim manufacturers. Please refer to their templates to confirm these dimensions.

**Additional Notes:**

- a) **Responsibility:** Door and frame manufacturers are responsible for providing adequate construction or re-inforcement for proper installation of hardware shown.
- b) Please contact us if a double lip strike is needed - for a proper template
- c) See catalog / spec sheets for additional lock details



ACCURATE  
LOCK & HARDWARE  
AMERICAN CRAFTED SINCE 1972

Standard 8839ARL  
All Backsets

T-ALH.8839RL