



ACCURATE  
LOCK & HARDWARE  
AMERICAN CRAFTED SINCE 1972

---

733 Horizontal Mortise Lock

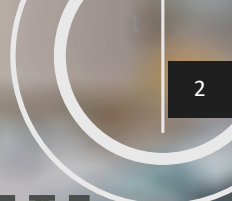
MODERN SECURITY MEETS EUROPEAN LUXURY



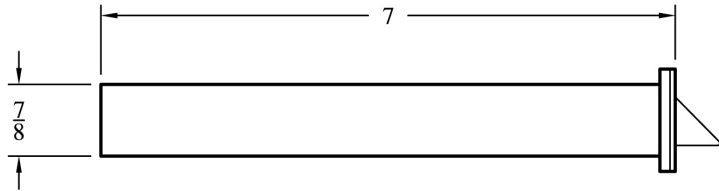
## 733 HORIZONTAL MORTISE LOCK

Originally designed for traditional European-style hardware, the horizontal mortise lock offers a secure locking solution to pair with knob trim. The nostalgic aesthetic is perfect for a chic entry that embraces period elegance.

- Ideal for decorative doors with a cross rail
- Ergonomic design creates extra space between the knob and the jamb for comfortable operation
- Available in most architectural finishes to match highly decorative knob designs



# 733 Horizontal Mortise Lock: Technical Details



**OPERATION:** Latch bolt operated by knob both sides. Outer knob may be set by stop. When outer knob is stopped, latch bolt is operated by key from outside. Dead bolt operated by key outside, thumb turn inside.

**LATCH BOLT:** 1/2" throw

**DEAD BOLT:** 1/2" throw

**BACKSET:** 2 3/4" to cylinder, 5 3/4" to knob

**HUB:** Available in different sizes to be compatible with various knob trim

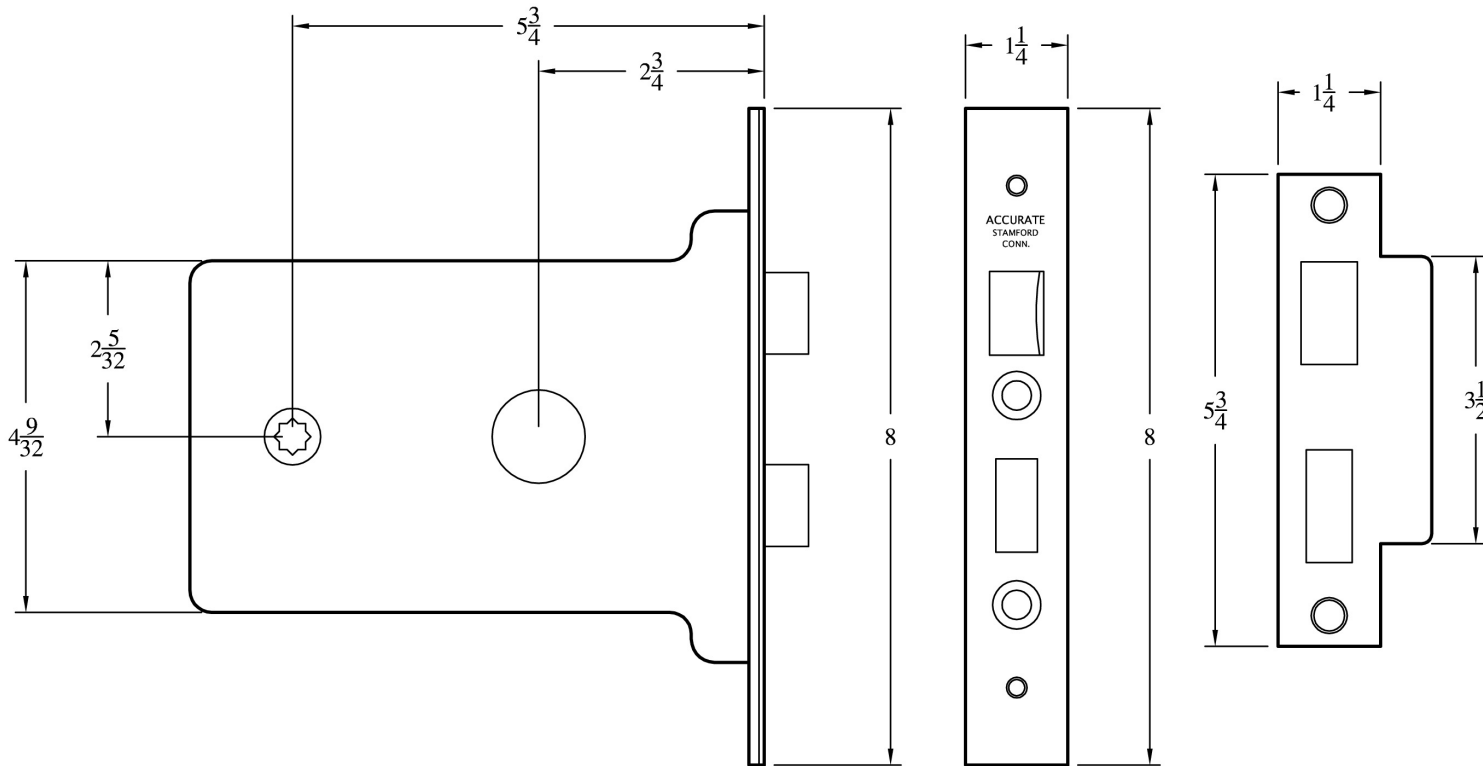
**THUMB TURN HUB:** 3/16" (5mm) on the diamond, furnished standard with 1129 Thumb Turn Disc

**FRONT:** Flat or No. 2 Bevel (1/8" in 2"), please specify

**ARMOR FRONT:** Brass, stainless steel or bronze, finished as required

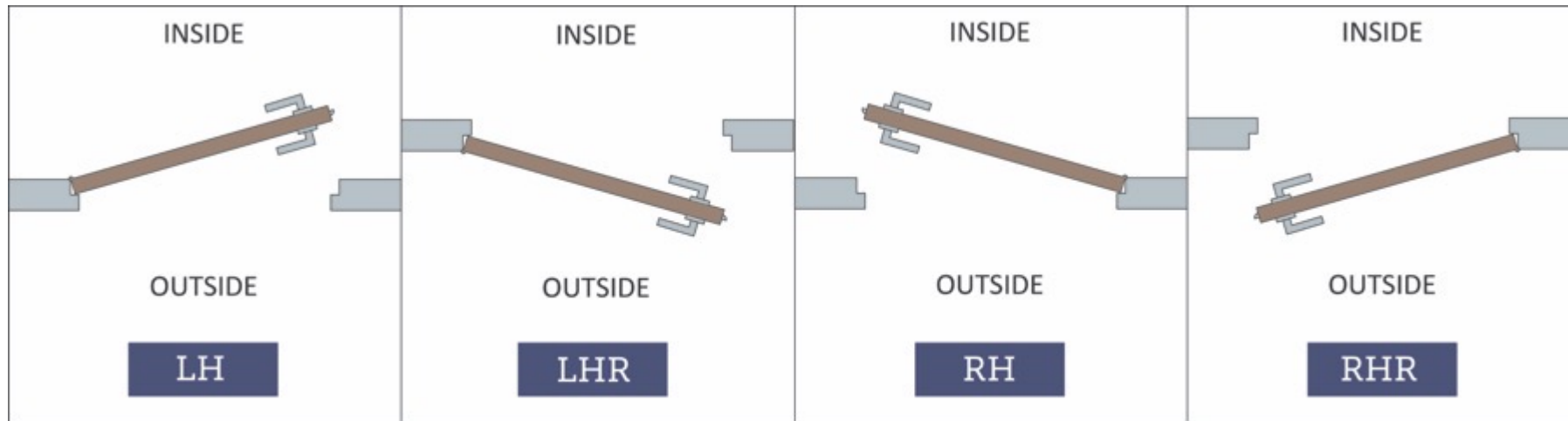
**STRIKE:** 5 3/4"

**DUST BOX:** Brass, stainless or US10B available to order (please specify if needed)



# HOW TO SPECIFY

## HANDING



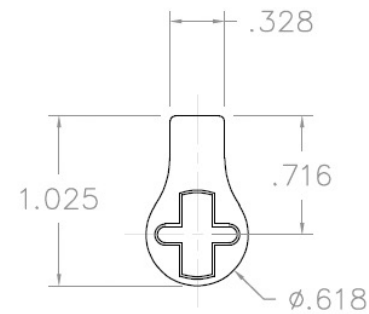
## FINISHES

**GROUP 1:** US4, US4NL, US32D, US26D

**GROUP 2:** US3, US3NL, US26, US32, US9, US10, US10B, US14, US15, US19

**GROUP 3:** BN, BB, TN, TB, DURO, ESN, US15A, US5

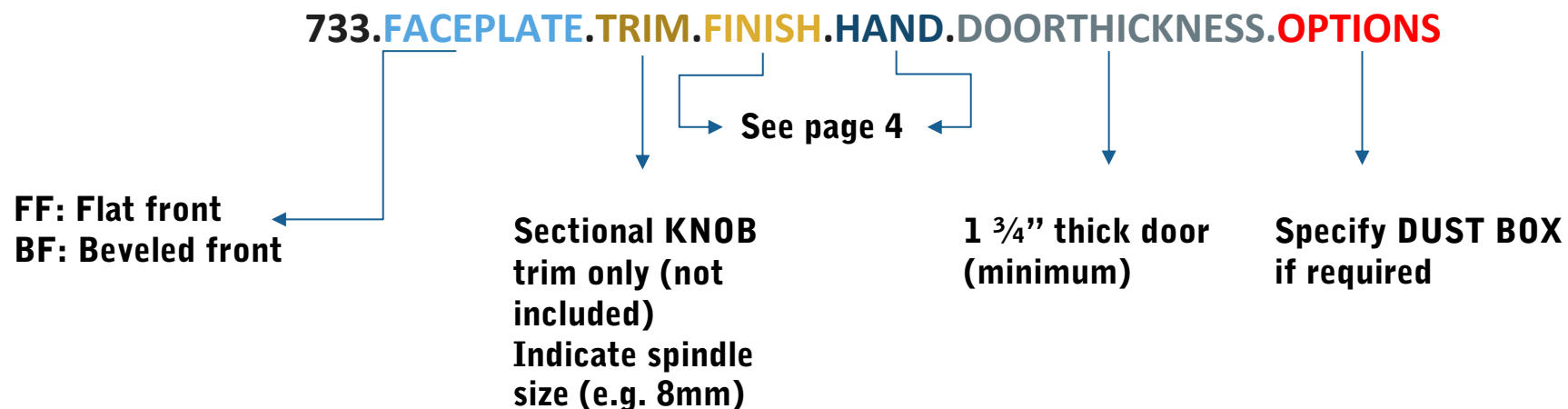
To view example of finishes visit: [Accurate Finishes](#).



## CYLINDERS & KEYING

The 733 lock accepts any standard American mortise cylinder with a straight cam.

# HOW TO SPECIFY



## EXAMPLES

Horizontal mortise lock for use with 8mm spindle | Wood door | Polished brass | dust box required

E.g.: **733.BF.8mm.US3.RH.134.DUST BOX**

Horizontal mortise lock for use with Baldwin knobs/roses | Wood door | Burnished brass | no dust box required

E.g.: **733.BF.Baldwin knobs/roses.BB.LH.214**

Horizontal mortise lock for use with 9/32" spindle | Metal door | Satin nickel | no dust box required

E.g.: **733.FF.9/32".US15.RH.134**

**ACCURATE LOCK & HARDWARE  
MANUFACTURERS OF LOCKS AND  
CUSTOM ARCHITECTURAL HARDWARE**

1 Annie Place | Stamford, CT 06902

**P:** 203.348.8865

**F:** 203.348.5234

**E:** sales@accuratelockandhardware.com

**www.accuratelockandhardware.com**



**AMERICAN CRAFTSMAN**  
— SINCE 1972 —