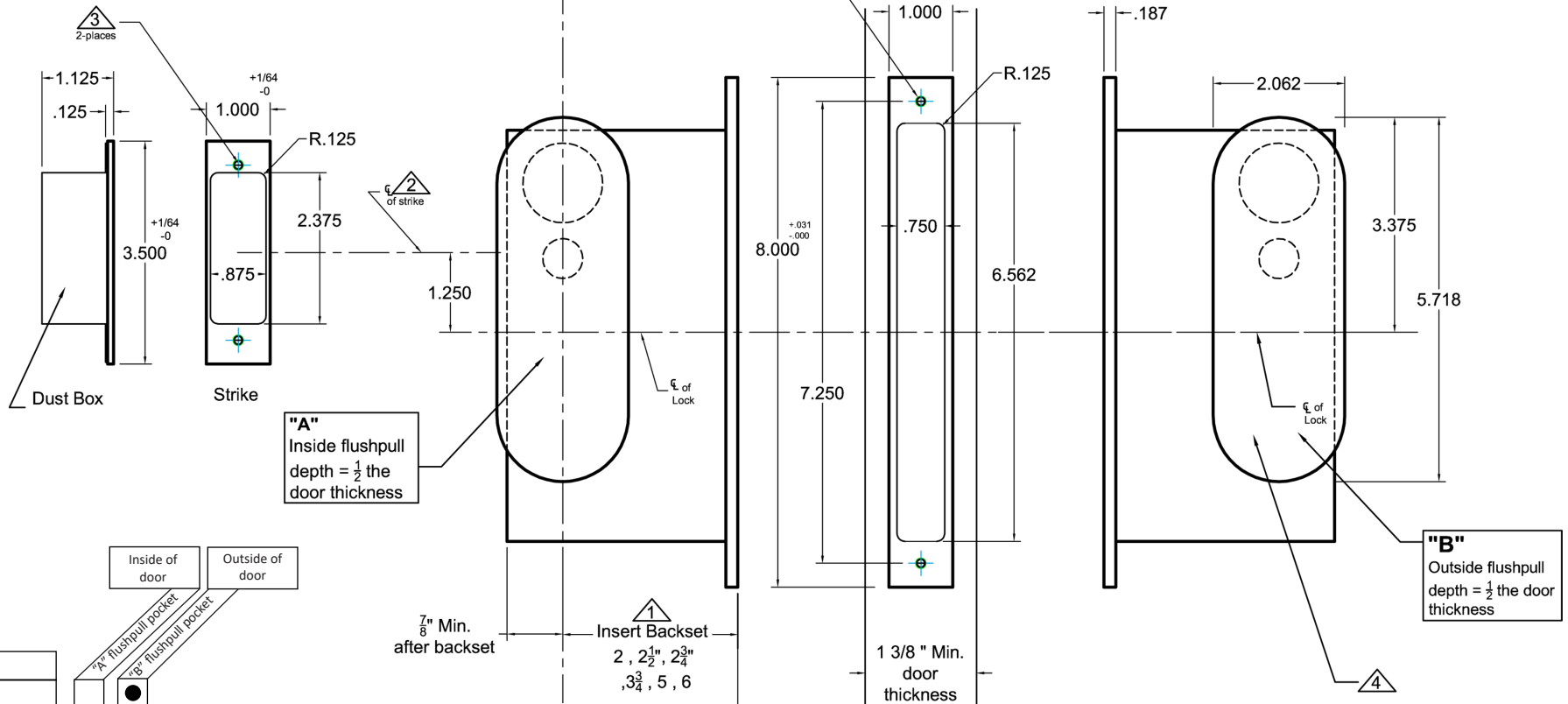


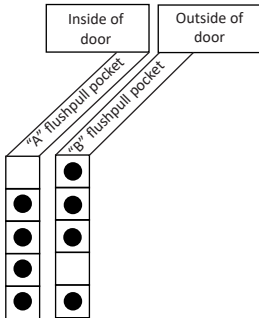
INSIDE OF DOOR

OUTSIDE OF DOOR



Lock Functions	Inside of door	Outside of door
2002CPDL/2002Q-1	●	●
2002CPDL/2002Q-2	●	●
2002CPDL/2002Q-3, -3i	●	●
2002CPDL/2002Q-4	●	●
2002CPDL/2002Q-5, -5i	●	●

● Requires Hole



Notes:

- 1 Insert backset here 2", 2 1/2", 2 3/4", 3 3/4", 5", 6"
- 2 Strike is 1 1/4" above centerline of lock
- 3 Prep for #8 wood or 8-32 machine screws
- 4 After the lock is installed and works properly. Pre-drill screw holes for the flush pulls. Then mount the flush pulls with the provided screws.

Additional Notes:

- a) **Responsibility:** Door and frame manufacturers are responsible for providing adequate construction or re-inforcement for proper installation of hardware shown.
- b) See T-ALH.2002CPDL.2002Q for additional lock details.



Standard 2002CPDL/2002Q Quiet
Pocket Door Lock with Integrated Edge
Pull CA2002, CN2002, CO2002

T-ALH.2002CPDL.2002Q.CA.CN.CO