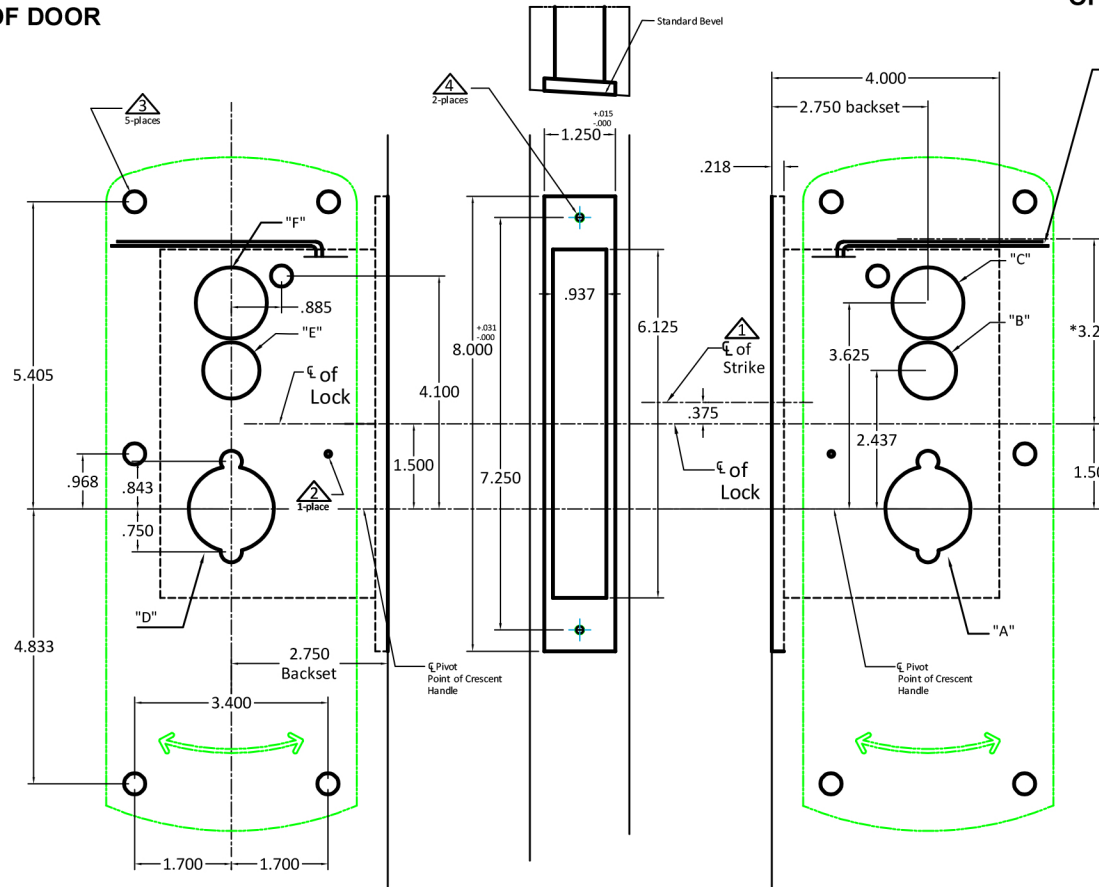


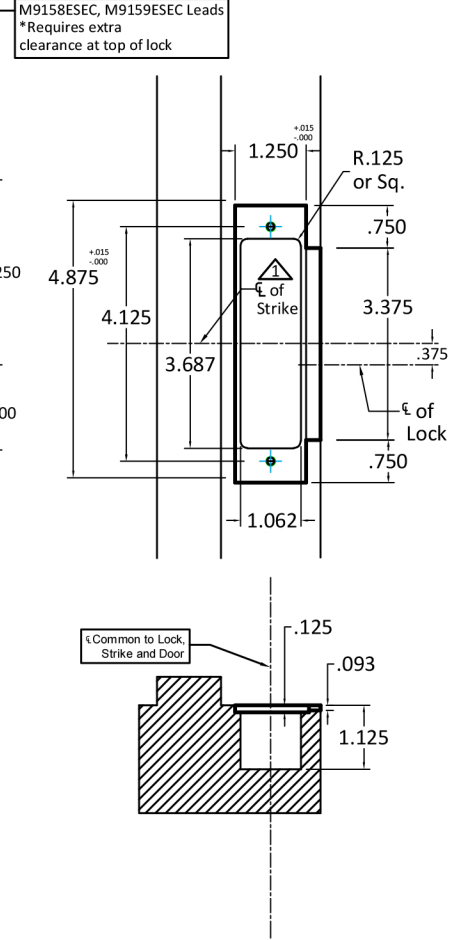
Lock Functions	Outside of door			Inside of door		
	"A" 1 1/2" dia.	"B" 1 3/8" dia.	"C" 1 1/4" dia.	"D" 1 1/2" dia.	"E" 1 3/8" dia.	"F" 1 1/4" dia.
9101SEC	●	●	●	●	●	●
9102SEC	●	●	●	●	●	●
9122SEC	●	●	●	●	●	●
9124SEC	●	●	●	●	●	●
9125SEC	●	●	●	●	●	●
9142SEC	●	●	●	●	●	●
9143SEC	●	●	●	●	●	●
9143ESEC	●	●	●	●	●	●
9143iSEC	●	●	●	●	●	●
9144SEC	●	●	●	●	●	●
9144ESEC	●	●	●	●	●	●
9144iSEC	●	●	●	●	●	●
9145SEC	●	●	●	●	●	●
9145DSEC	●	●	●	●	●	●
9145SSEC	●	●	●	●	●	●
9146SEC	●	●	●	●	●	●
9147iSEC	●	●	●	●	●	●
9148SEC	●	●	●	●	●	●
9153SEC	●	●	●	●	●	●
9156SEC	●	●	●	●	●	●
9158SEC	●	●	●	●	●	●
M9158ESEC	●	●	●	●	●	●
9159SEC	●	●	●	●	●	●
M9159ESEC	●	●	●	●	●	●
9160SEC	●	●	●	●	●	●

● Required Holes

INSIDE OF DOOR



OUTSIDE OF DOOR



Notes:

- 1) ASA strike mounted 3/8" ABOVE centerline of lock
- 2) **VERY IMPORTANT:** Prep for #8 Wood or #8-32 Machine screw - both sides of door (1 pilot hole per side)
- 3) 3/8" Diameter Thru-bolt holes - **8 PLACES ONLY**
- 4) Prep for #12 wood or 12-24 machine screws
- 5) If metal doors - suitable reinforcements required
- 6) Please contact us if a double lip strike is needed - for a proper template
- 7) See catalog / spec sheets for additional lock details



Standard 9100SEC Template for use with PC - Large Crescent Plates (Paperclip)

Made in USA

All Accurate products meet the requirements of the "Buy American" provisions included in the "American Recovery and Reinvestment Act" (ARRA Title XVI, Section 1605)

T-ALH.9100SEC.LCH.PC