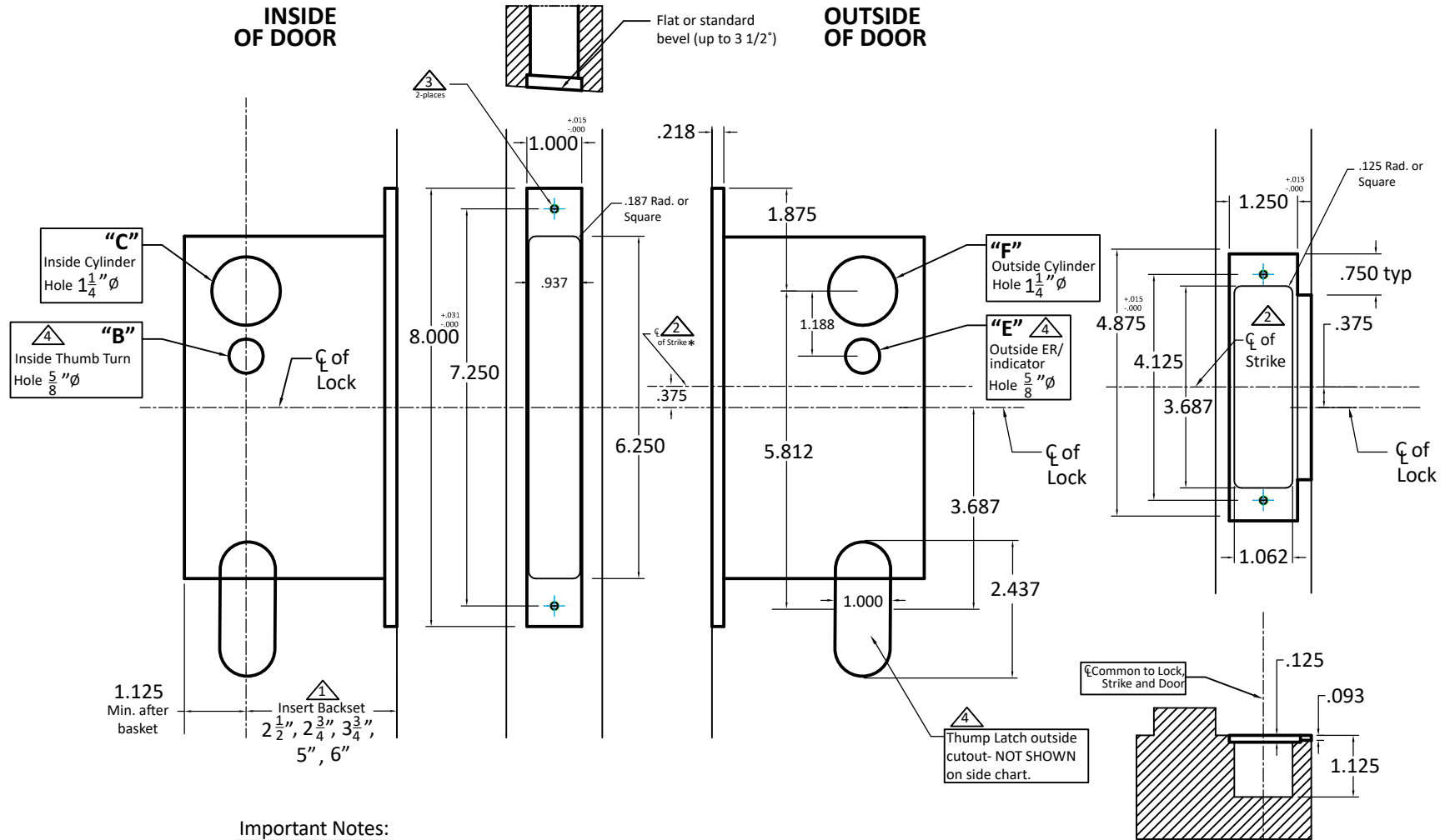


Functions	B	C	E	F
9022		●		●
9024	●			●
9025				
9034				●
9039	●		○	
9042	●	●		●
9043	●			●
9043E	●		●	●
9044	●			●
9044E	●		●	●
9045				●
9045S		●		●
9046		●		●
9048	●			●
9049	●			●
9053	●			●
9056				●
9058		●		●
9059				●
9060		●		●
9067	●			●
9069	●			●

● Required Holes  
○ Optional Holes



**Important Notes:**

- ① Insert backset here 2 1/2", 2 3/4", 3 3/4", 5", 6".
- ② ASA strike mounted 3/8" ABOVE centerline of lock.
- ③ Prep for #12 wood or 12-24 machine screws (Lock and Strike.)
- ④ Knob, Thumb Latch, Thumb Turn, and ER holes may vary from different trim manufacturers. Please refer to their templates to confirm dimensions.

**Additional Notes:**

- a) **Responsibility:** Door and frame manufacturers are responsible for providing adequate construction or re-inforcement for proper installation of hardware shown.
- b) Please contact us for double lipped template if needed.
- c) See spec sheets for additional lock details.



**ACCURATE**  
LOCK & HARDWARE  
AMERICAN CRAFTED SINCE 1972

Standard 9000 Thumb Latch x  
Thumb Latch- All Backsets

T-ALH.9000.TT