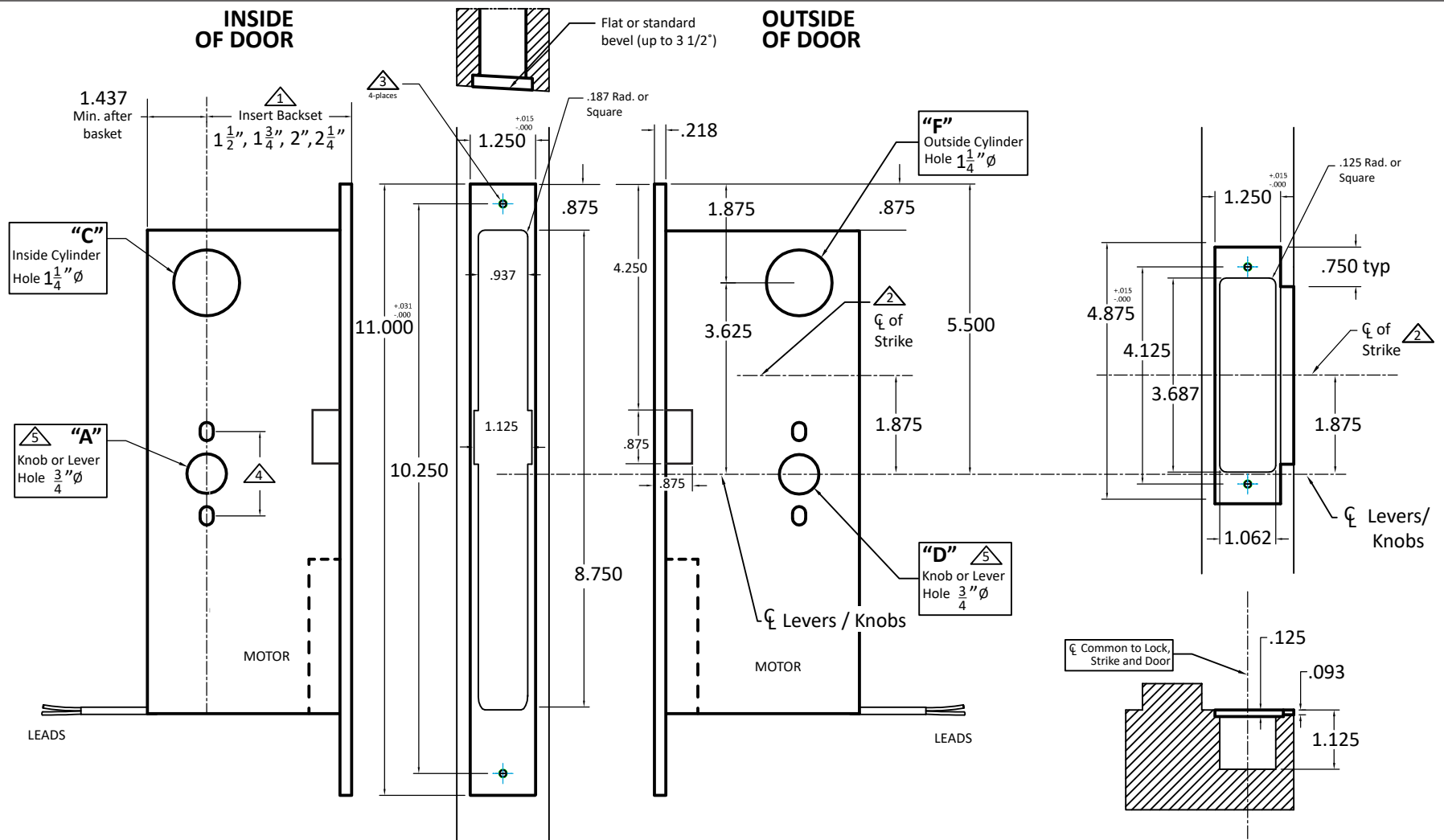


INSIDE OF DOOR

OUTSIDE OF DOOR

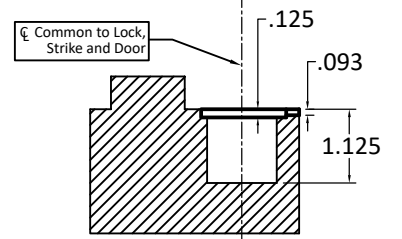


Important Notes:

- ① Insert backset here 1 1/2", 1 3/4", 2", 2 1/4".
- ② ASA strike mounted 1 7/8" ABOVE centerline of Lever/Knob.
- ③ Prep for #12 wood screws (lock and strike).
- ④ Through-bolting holes **ONLY** if required. See trim manufacturers' standard template for details.
Accurate locks accommodate 1 1/2" to 1 11/16" center to centers and up to 1/4" dia. post.
If there are any additional questions about through-bolting, please contact us.
- ⑤ Knob/Lever holes may vary from different trim manufacturers. Please refer to their templates to confirm dimensions.

Additional Notes:

- a) **Responsibility:** Door and frame manufacturers are responsible for providing adequate construction or re-inforcement for proper installation of hardware shown.
- b) Please contact us for double lipped template if needed.
- c) See spec sheets for additional lock details.



Functions	A	C	D	F
M8825ELR	○			○
M8858ELR	○	●	○	●
M8859ELR	●	○	○	●

● Required Holes
○ Optional Holes



Standard M8800ELR for Wood Door - All Backsets

T-ALH.M8800ELR.WD