

SMARTENTRY™

by ACCURATE

SMART MORTISE LOCK Installer Guide | Two Options

Installer Smartphone

*If homeowner's phone **IS NOT** available during time of installation.*

Download app and follow steps continued below.

Homeowner Smartphone

*If homeowner's phone **IS** available during time of installation.*

Download app and follow prompts. (Steps continued below do not apply)

1. Installer to E-mail smartentry@accuratelockandhardware.com to become an approved installer and bypass payment process.
 - Once e-mail is received, we will be able to approve through Accurate's Customer Service portal.
2. Download the app, and create and verify account. (It is possible for the verification to go to spam in which case installer should check their spam folder). Click on the link to activate account.
3. Add lock by scanning QR tag and do all testing.
4. Once tested, additional devices can be added including SmartEntry Locks, Bridges and Range Extenders.
5. Once done, select "Transfer Ownership" option from drop down menu and type owner's e-mail and mobile number.
6. Owner can download the SmartEntry app, create an account, activate account and log in.
7. Payment options will be shown with activation and subscription
8. Once payment is completed, owner can start using the lock.



SM9159E SMART MORTISE LOCK Installation Instructions

PACKAGE CONTENTS


- + SM9159E Smart Mortise Lock
- + CPU Unit
- + Battery Pack

TOOLS NEEDED

- + Screw driver
- + Smartphone

PREREQUISITES

— Prepare the door per the SM9159E template.

— Download  app and follow prompts.

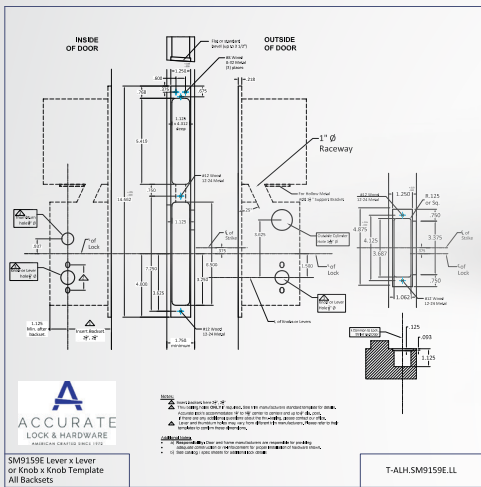
— Scan QR code on CPU logic board with your smartphone.

For the Range Extender and the Ethernet Bridge, please refer to the Quick Start Guides provided with each product.

STEP 1

Prepare the door for the SM9159E template.

(Note that if the decorative trim is provided by manufacturer other than Accurate you have to reference the manufacturer's template for inside and outside faces of the door).



STEP 2

Scan the QR code on CPU logic board with your phone.



STEP 3

Install mortise lock into mortise pocket and run 7 pin connector through the 1" raceway into the second pocket.



STEP 4

Install hardware trim (i.e. levers, knobs, Thumbgrip, Thumbturn, cylinder etc.)

Note: Rotating thumb turn will electro-mechanically lock the outside handle. After rotating, the thumb turn springs back to the home position.



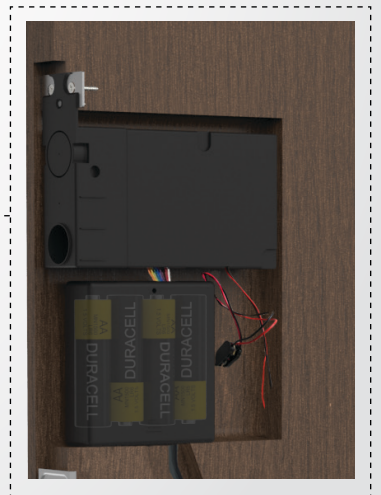
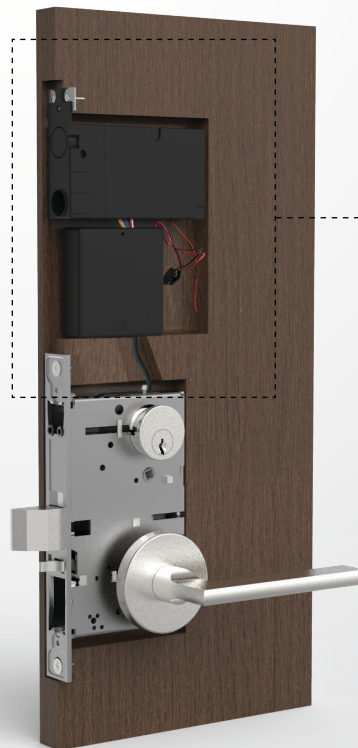
STEP 5

Connect 7 pin connectors. Then, place $\frac{1}{32}$ " thick shim behind the logic board. Screw down the logic board to the door edge with screws provided.



STEP 6

Connect the CPU logic board to the empty battery pack with the snap connectors. Install 4 AA batteries into battery pack. If there is an on/off switch on the battery pack, turn it "on". You should hear a beep.



STEP 7

Install decorative faceplate with screws provided (two 8-32 x 1/4" machine screws, one 8-32 x 3/4" combo screw).



STEP 8

TEST LOCK FOR FUNCTIONALITY.



HARDWIRING INSTRUCTIONS

SmartEntry by Accurate offers the option to be hardwired. Polarized leads (red positive, black negative) requires 24VDC power. The CPU can be hardwired and simultaneously have battery power for backup. The system will default to using power from the hardwire when both are connected.



Interface with Mortise Lock

24V DC

(4) AA Batteries (6V to 9V)

