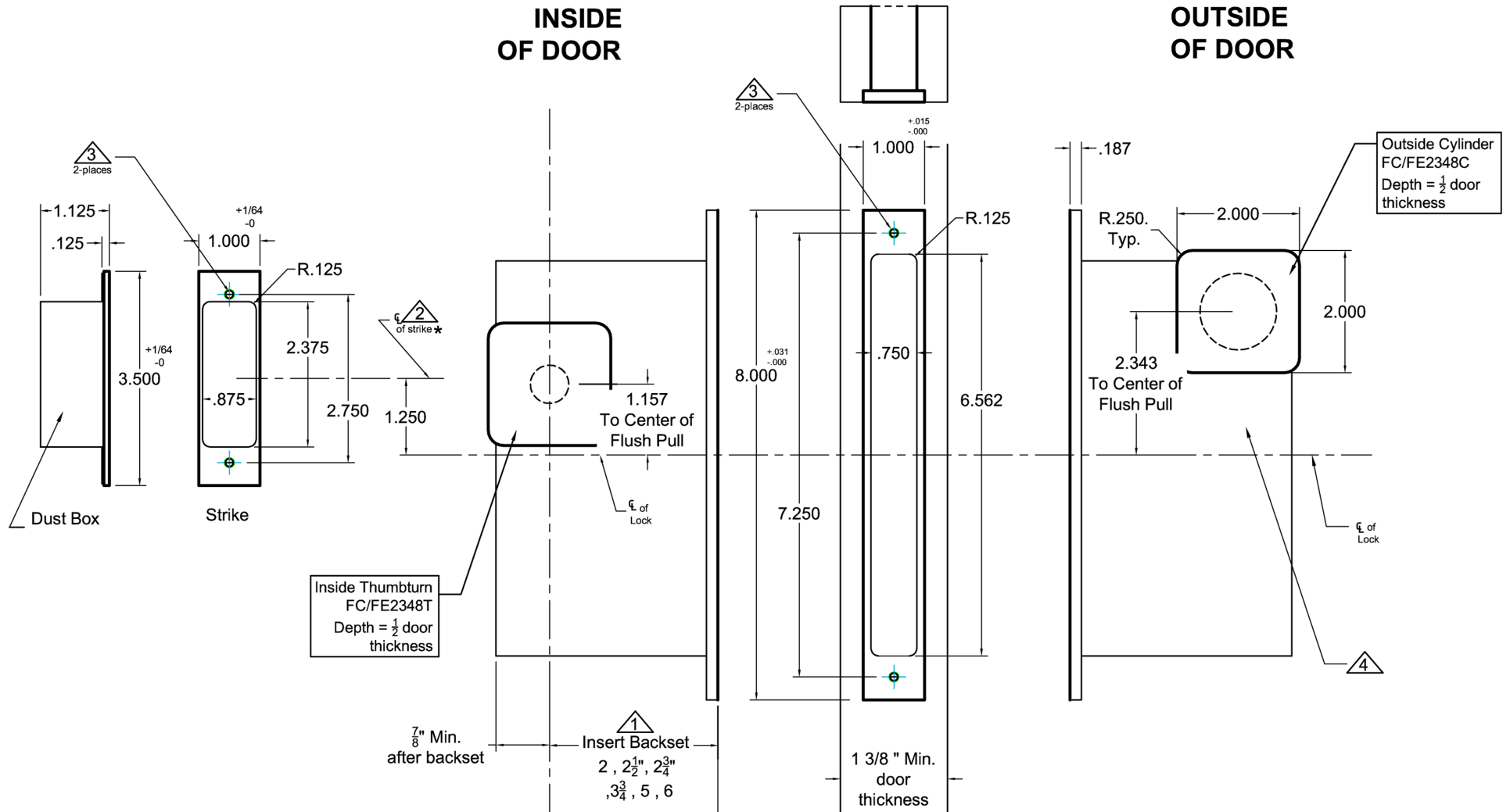


# INSIDE OF DOOR

# OUTSIDE OF DOOR



### Notes:

- ① Insert backset here 2", 2 1/2", 2 3/4", 3 3/4", 5", 6"
- ② Strike is 1 1/4" above centerline of lock
- ③ Prep for #8 wood or 8-32 machine screws
- ④ After the lock is installed and works properly. Pre-drill screw holes for the flush pulls. Then mount the flush pulls with the provided screws.

### Additional Notes:

- a) **Responsibility:** Door and frame manufacturers are responsible for providing adequate construction or re-inforcement for proper installation of hardware shown.
- b) See Spec.2002CPDL/2002Q for Spec.FE2348T/C for additional details.



**ACCURATE**  
LOCK & HARDWARE  
AMERICAN CRAFTED SINCE 1972

Standard 2002CPDL/2002Q-3 Entry  
FE2348T/C Flush Pull- All Backsets

T-ALH.2002CPDL.2002Q-3.FE2348T.C