



ACCURATE LOCK & HARDWARE

AMERICAN CRAFTED SINCE 1972

9500VR Vertical Rod Lock

AN ALTERNATIVE LOCKING SOLUTION FOR BARN DOORS

INVISIBLE DETAILS

9500VR VERTICAL ROD LOCK

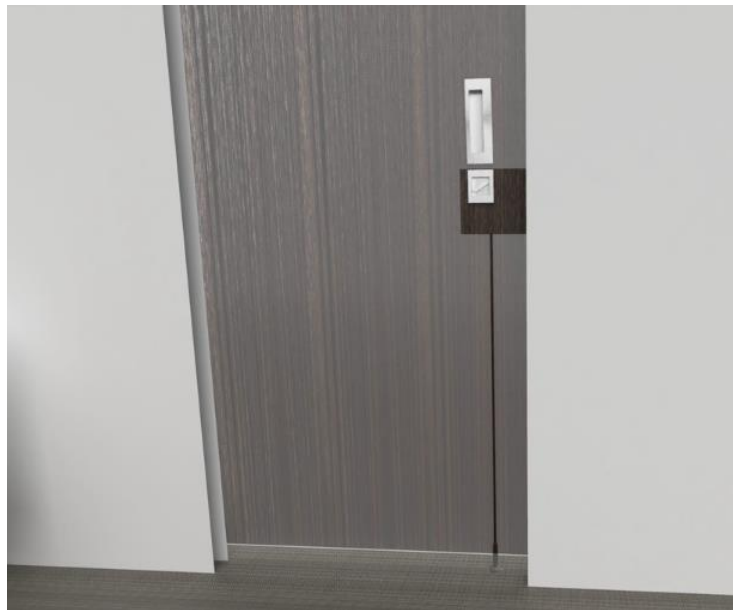
- Designed for sliding door applications
- Allows the door to be locked onto the floor (VRB) or up into track or header in the ceiling (VRT)
- For use with flush pulls or accessible hardware
- For single door openings (or double door openings if independent locking is desired)
- Features locking capability without a protruding strike (strike options available)
- Ideal for use in both residential and commercial settings
- Pair with different trim options to best fit the design intent and specific project requirements.
 - Flush pulls
 - ADA pulls



9500VRB VERTICAL ROD BOLT WITH FLUSH PULL TRIM

VERTICAL ROD LOCK: BEHIND THE SCENES

9500VRB Bottom Lock Shown*



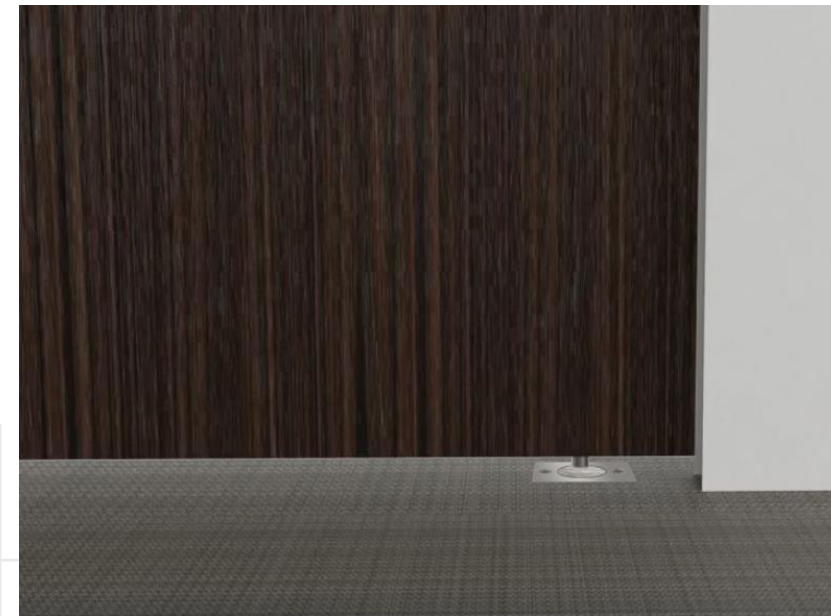
FULL DOOR VIEW

9500VRB lock component and details are shown here as the interior side of a right handed door (translucent to show detail).



UNLOCKED | DOOR VIEW

9500VRB is paired with flush trim.
Unlocking the thumb turn will release the rod from the floor to slide door open.
(Other trim options available.)



UNLOCKED | FLOOR VIEW

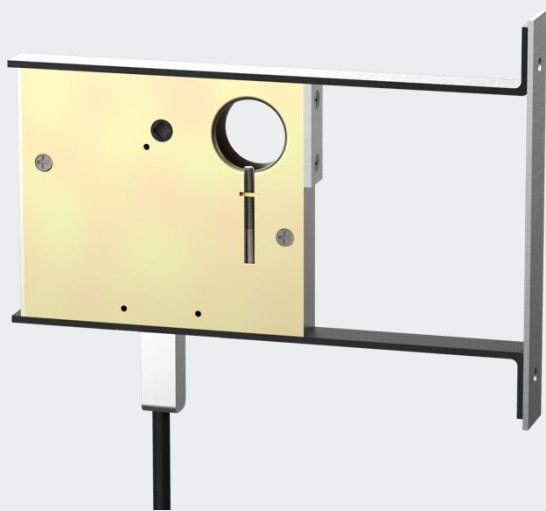
Close up view of the rod lock releasing from the floor when unlocked.

*9500VRT Top Lock also available to lock on ceiling

WATCH THE VIDEO

<http://bit.ly/9500VRB>

9500VR LOCK BODY + TRIM OPTIONS



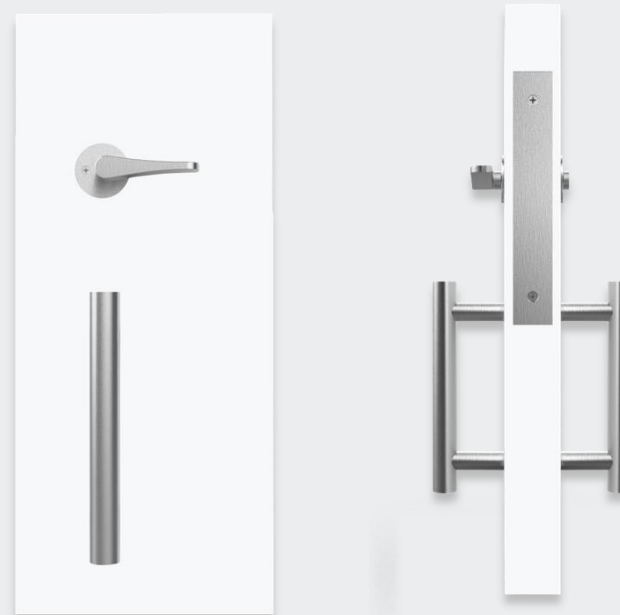
LOCK BODY

- Vertical rod lock available to lock into floor (VRB) or ceiling (VRT)
- Variable backsets available: on applications with cylinders, there will be two backsets (one to the thumb turn and one to the cylinder)



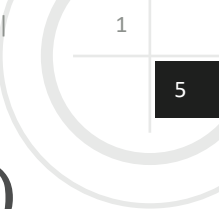
FLUSH PULL TRIM

- Minimalistic recessed look
- A variety of flush pull options available with exposed or concealed fasteners (for all options [click here](#))



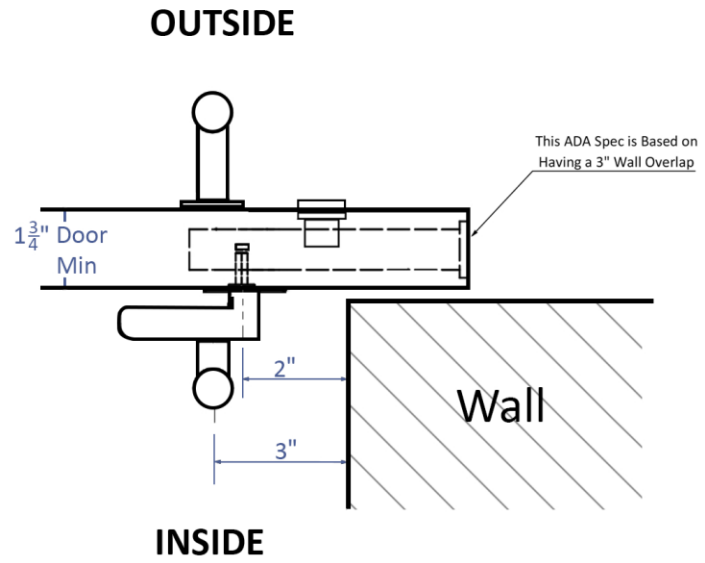
ADA BACK TO BACK PULLS

- Sleek, easy-to-grab 7200P pull handles that meet accessibility requirements
- Customizable to be made in various lengths
- Pair with 7200ADA thumb turn for full ADA set

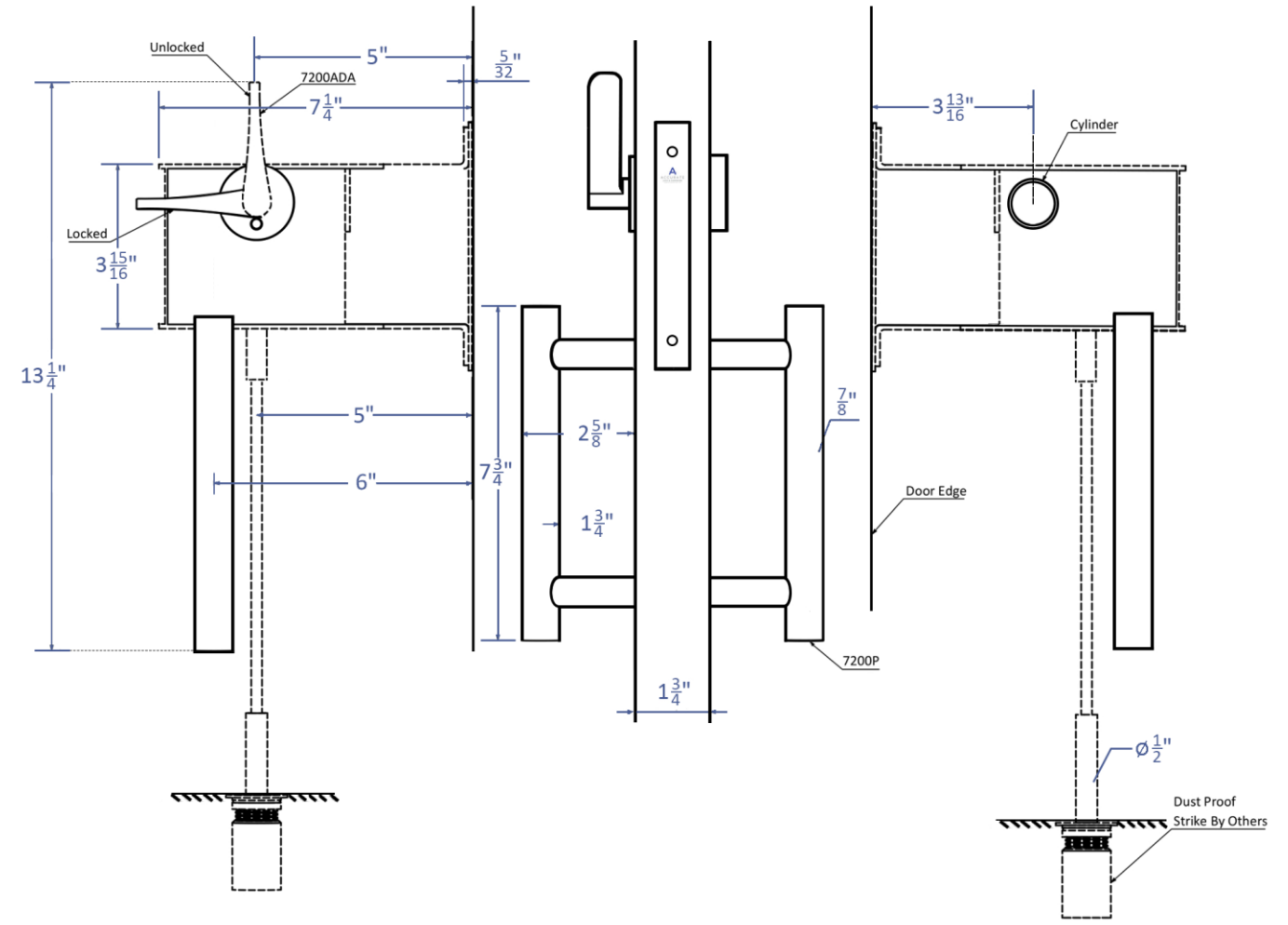


9500VR

Vertical Rod Lock with Back to Back Pulls (ADA)



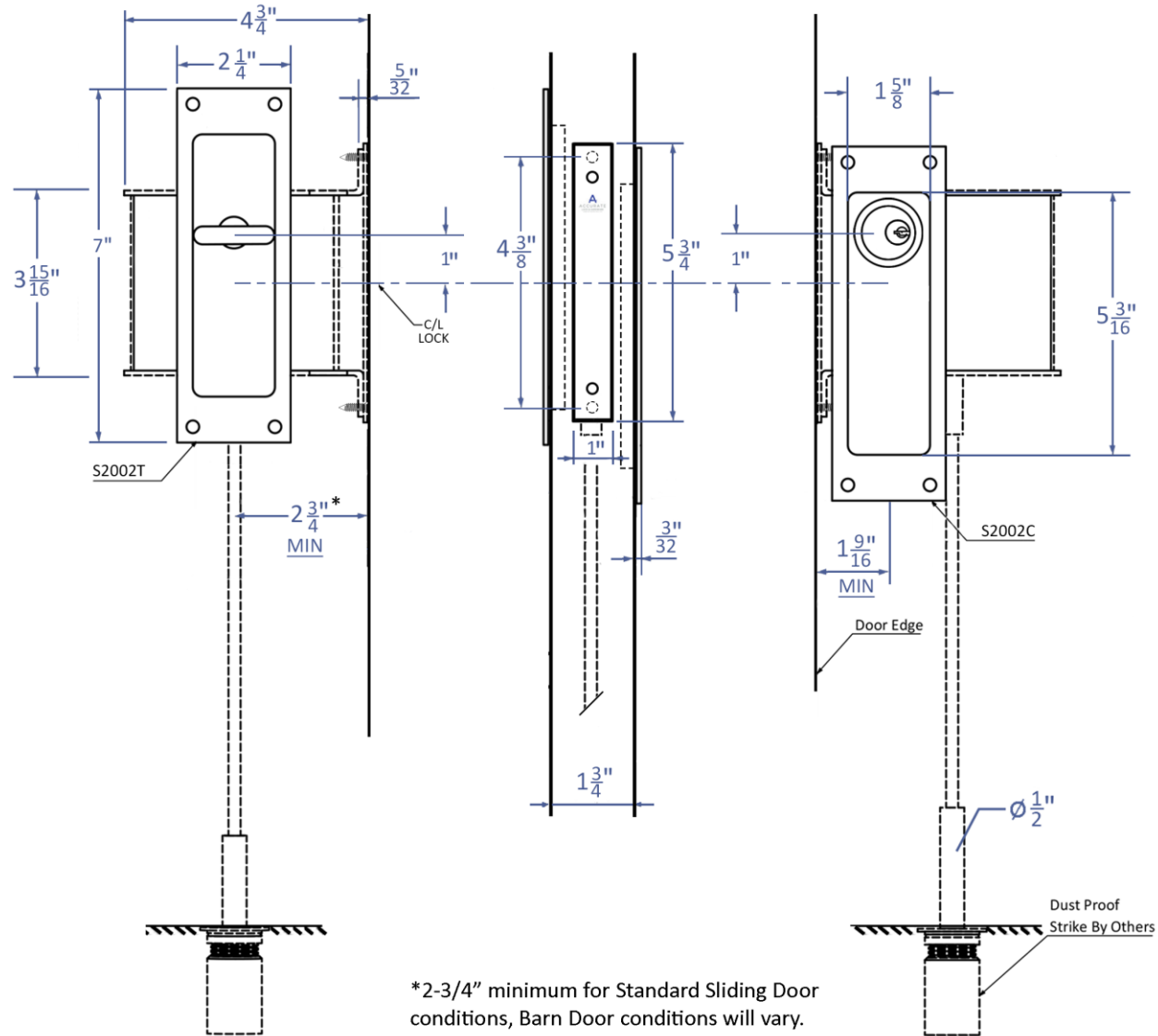
RH Shown



ADA.9500VRB-3
 Entry Function shown with
 7200P ADA Compliant Pulls

9500VR

Vertical Rod Lock with Flush Pull Trim

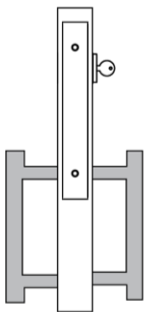


*2-3/4" minimum for Standard Sliding Door conditions, Barn Door conditions will vary.

9500VRB-3 Entry Function with S2002C x S2002T Flush Pulls

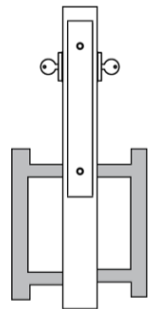
*2³/₄" minimum for Standard Sliding Door conditions, Barn Door conditions will vary.

9500VR FUNCTIONS



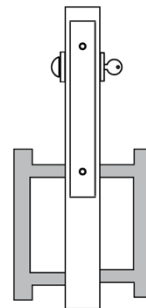
9500VRB-1 | 9500VRT-1 SINGLE CYLINDER

Deadbolt by key outside.



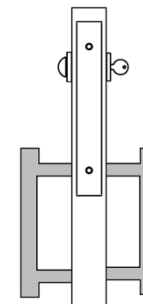
9500VRB-2 | 9500VRT-2 DOUBLE CYLINDER

Deadbolt by key either side.



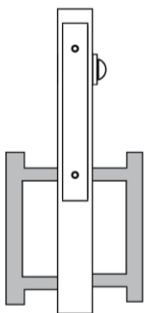
9500VRB-3 | 9500VRT-3 ENTRY

Deadbolt by key outside or
turn piece inside.



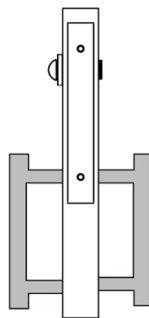
9500VRB-3ST | 9500VRT-3ST CLASSROOM DEADLOCK

Turn piece inside will only
retract deadbolt.



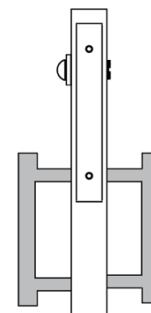
9500VRB-4 | 9500VRT-4 PRIVACY

Deadbolt by turn piece
inside.



9500VRB-5 | 9500VRT-5 PRIVACY

Deadbolt by emergency release
outside, turn piece inside.



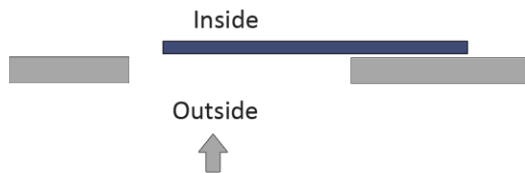
9500VRB-5i | 9500VRT-5i PRIVACY WITH INDICATOR

Deadbolt by emergency release with
indicator outside, turn piece inside.

Note: Shown here with back to back pulls.
Other trim options available in these functions.

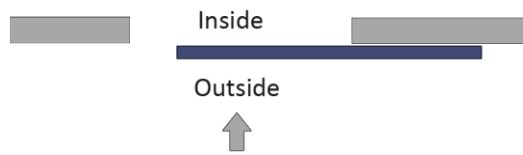
HOW TO SPECIFY

HANDING



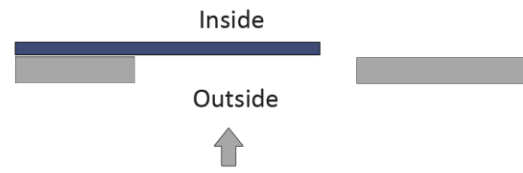
RH-Inside

1. Standing outside
2. Door on inside
3. Opens to right



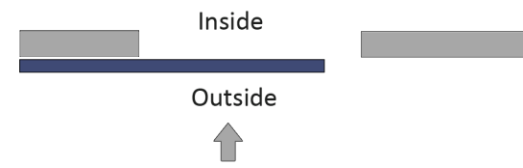
RH-Outside

1. Standing outside
2. Door is outside
3. Opens to right



LH-Inside

1. Standing outside
2. Door on inside
3. Opens to left



LH-Outside

1. Standing outside
2. Door is outside
3. Opens to left

FINISHES

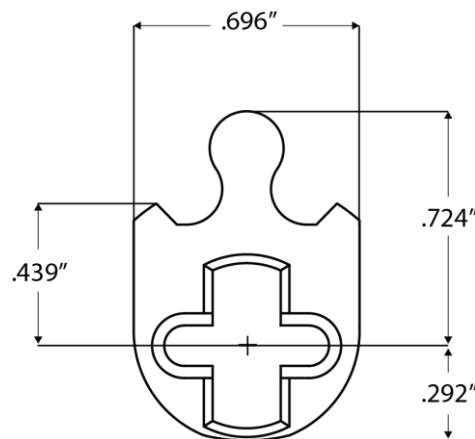
GROUP 1: US4, US4NL, US32D*, US26D

GROUP 2: US3, US3NL, US26, US32*, US9*, US10*, US10B, US14, US15, US19

GROUP 3: BN, BB, TN, TB, DURO, ESN, US15A, US5

* Trim options may not be available in US32D, US32, US9, or US10 finish. Please call for assistance.

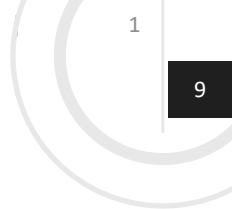
To view example of finishes visit: [Accurate Finishes](#).



CYLINDERS & KEYING

9500VR locks accept any standard American mortise cylinder. For details on required cams and compatibility with other manufacturers' cylinders, please visit:

[Accurate Support](#).



HOW TO SPECIFY

TRIM.FUNCTION.BACKSET.FINISH.HAND.DOORTHICKNESS.VERTICAL DIMENSION

Trim Options

Please specify:

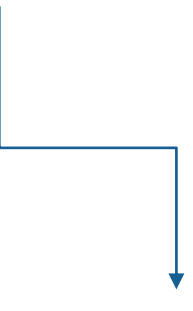
Flush Pulls:

- S, A, N, O
- CS, CA, CN, CO
- 24R, 24S
- FC2348, FE2348

ADA

- Includes 7200P and 7200ADA (where applicable)

See all available trim options.



Functions
See available functions (pg. 7)

Backset
For all functions except 9500VR-1 and 9500VR-2, specify backset to thumb turn and then cylinder will be located 1-3/16" away
(E.g. Thumb turn backset: 5", Cylinder backset: 3 13/16")

For 9500VR-1 and 9500VR -2, specify backset to the cylinder.

ADA: Minimum 5" backset to thumb turn on barn door applications.

Flush Trim: Min. 2 3/4" backset to thumb turn.

Other backsets available.

Finishes
See available finishes (pg.8)

Door Thickness
Standard 1 3/4" Doors

Vertical Dimension
From centerline of cylinder or thumb turn to top or bottom of door

EXAMPLES

Vertical Rod Lock Bottom | Privacy | Flush Pull Trim
E.g. **S.9500VRB-5.212.US3NL.RH.134.39**

Vertical Rod Lock Top | Entry | ADA Trim
E.g. **ADA.9500VRT-3.6.US10B.LH.134.39**

Vertical Rod Lock Bottom | Classroom Deadlock | ADA Trim
E.g. **ADA.9500VRB-3ST.5.US4.RH.134.39**

Also available for swinging door applications, please call for assistance.

**ACCURATE LOCK & HARDWARE
MANUFACTURERS OF LOCKS AND
CUSTOM ARCHITECTURAL HARDWARE**

1 Annie Place | Stamford, CT 06902

P: 203.348.8865

F: 203.348.5234

E: sales@accuratelockandhardware.com

www.accuratelockandhardware.com



**AMERICAN CRAFTED
— SINCE 1972 —**