



ACCURATE

LOCK & HARDWARE

AMERICAN CRAFTED SINCE 1972

GR87 SERIES

RABBETED GLASS PATCH MORTISE SETS FOR OFFSET GLASS APPLICATIONS



RABBETED GLASS PATCH KIT

GR87 SERIES

This rabbeted glass patch hardware set features single action egress for code compliance and anti-friction latch for more reliable closing and operation. The GR87 offers more functionality and features to fit any design intent. The GR87 is offered as a complete package including lock body, patch assembly and levers, compatible with US mortise cylinders.

GR8756 RABBETED GLASS PATCH WITH 18L LEVERS

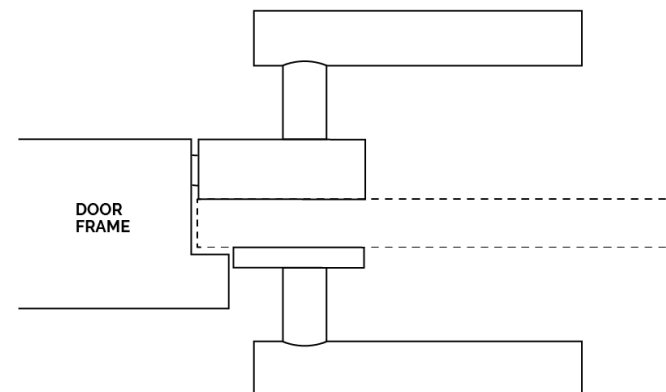
GR87 Series

RABBETED GLASS PATCH HARDWARE SETS

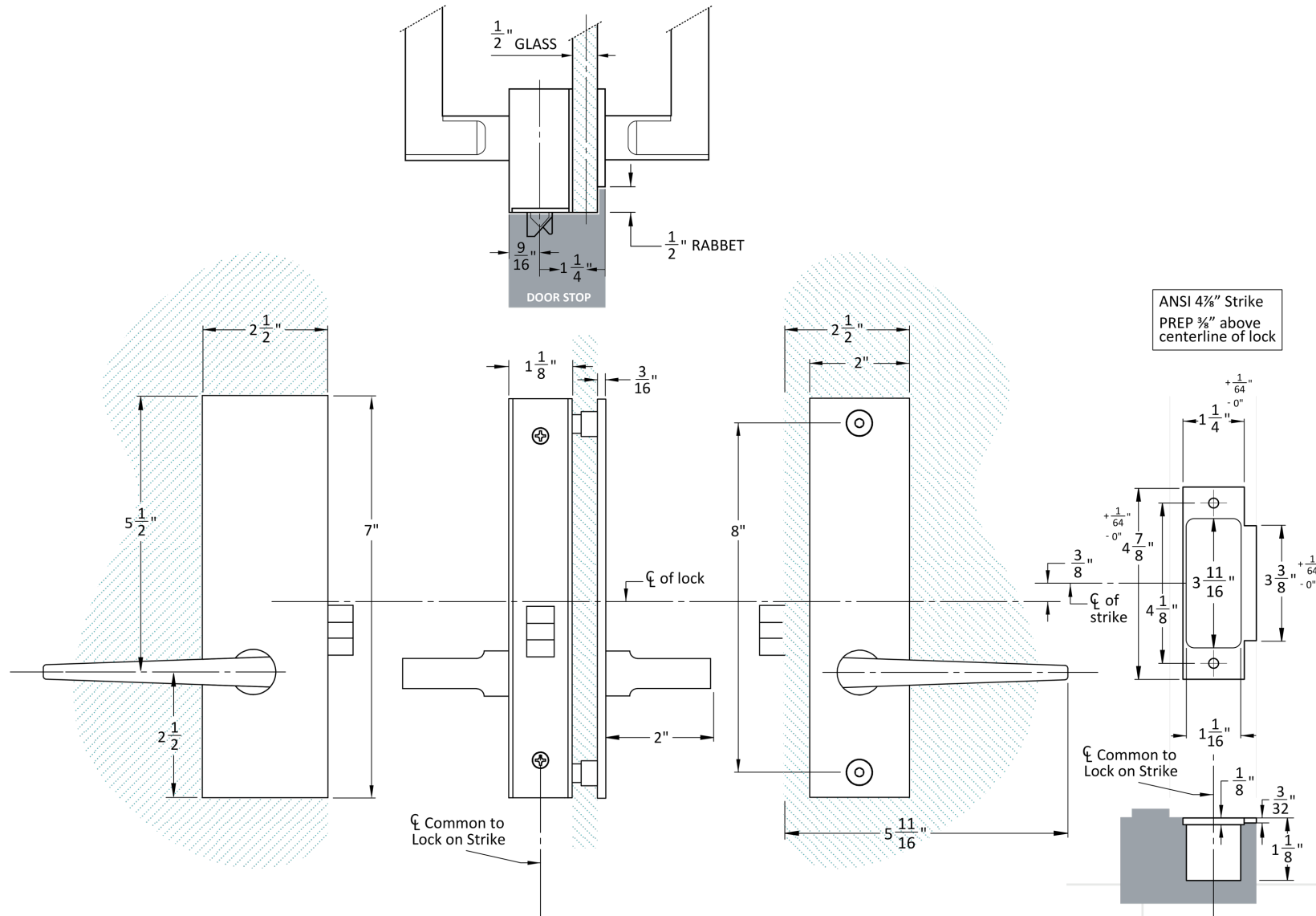
- Single action egress for code compliance
- Features a smoother, upgrade latch that results in more reliable closing, higher performance and overall better operation by reducing friction when it engages with the strike
- Offers more functionality than the GR86
- For inswing and outswing doors that utilize proprietary framing
- Standard set up is for a 1 1/2" backset lockset on 1/2" thick tempered glass



GR87
Offset
On Glass



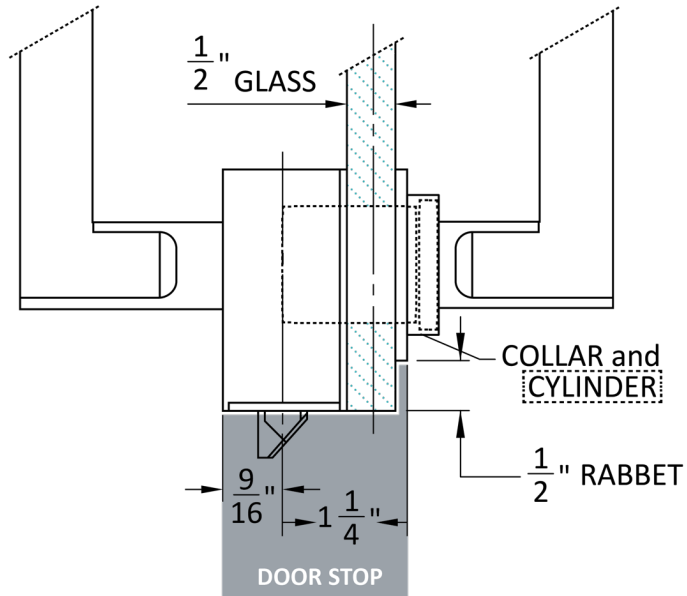
GR87 Rabbeted Glass Patch Dimensions



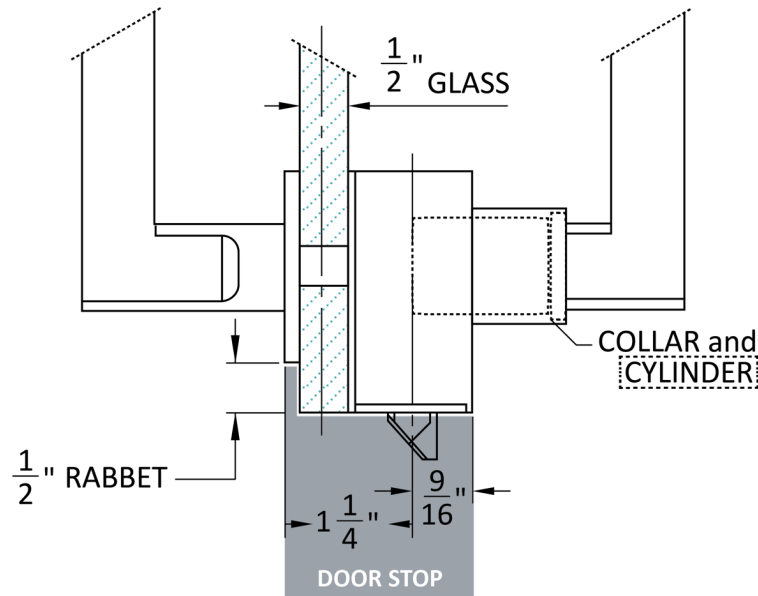
GR8725

GR87 Rabbeted Glass Patch Dimensions

INSWING
 1-1/2" Cylinder Length
 3/8" Collar



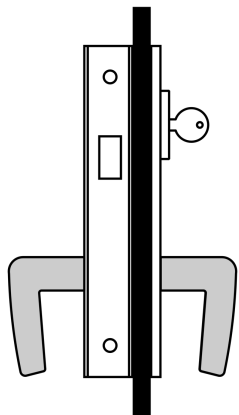
OUTSWING
 1-1/2" Cylinder Length
 1" Collar



CYLINDER GUIDELINES		
Cylinder Length	Collar Size	
	Inswing	Outswing
3/4"	N/A	3/8"
1"		1/2"
1-1/8"		5/8"
1-1/4"		3/4"
1-3/8"	1/8"	7/8"
1-1/2"	3/8"	1"

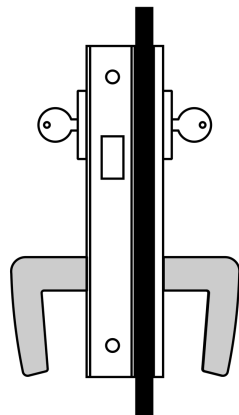


GR87 Series Functions



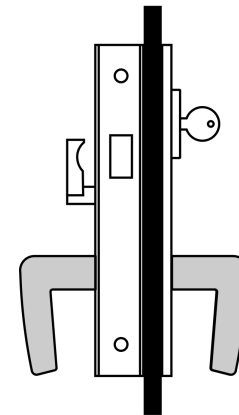
GR8701 DEADLOCK

Deadbolt by key outside, no inside operation.



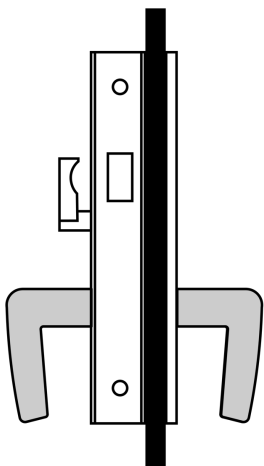
GR8702 DEADLOCK

Deadbolt by key either side.



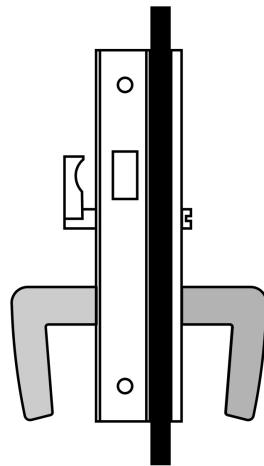
GR8703 DEADLOCK

Deadbolt by key outside, thumb turn inside.



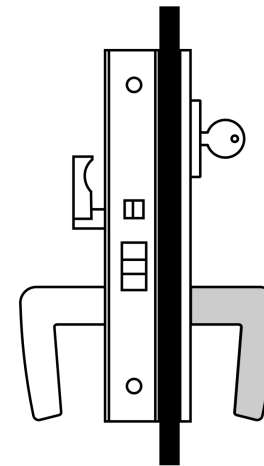
GR8704 DEADLOCK

Deadbolt by thumb turn inside only.



GR8705 DEADLOCK

Deadbolt by emergency release outside, thumb turn inside.

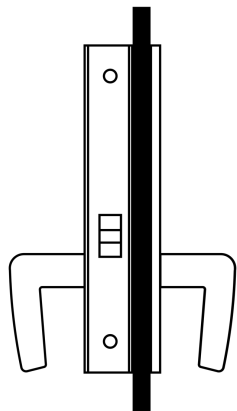


GR8624 ENTRANCE

Latch bolt by lever either side.

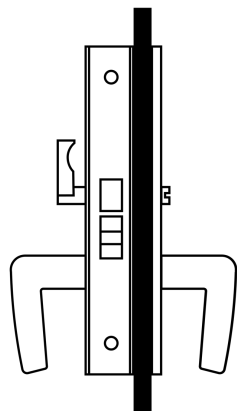
Deadbolt by key outside and turn piece inside.

GR87 Series Functions



GR8725 PASSAGE

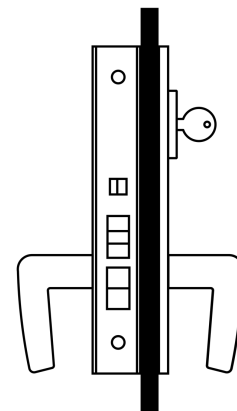
Latch bolt by lever either side.



GR8739 PRIVACY

Latch bolt by lever either side.

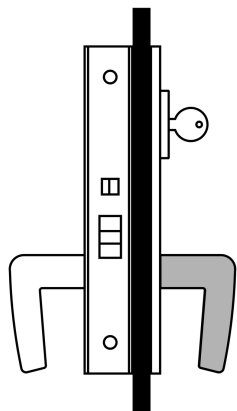
Deadbolt by turn piece inside and optional emergency key outside.



GR8756 ENTRANCE OR OFFICE

Latch bolt by key outside and handle either side unless outside handle is locked by toggle-action stop.

Auxiliary latch deadlocks latch bolt.



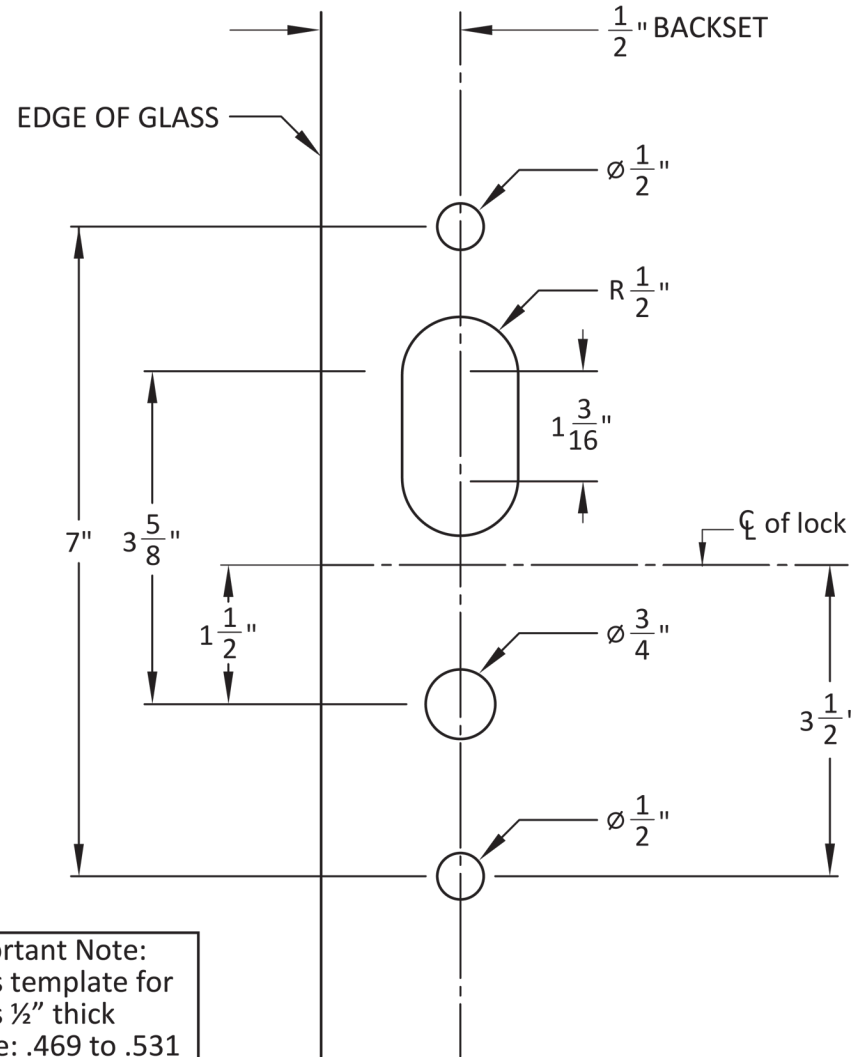
GR8659 STOREROOM

Latch by handle inside and key outside.

Outside handle always rigid.

Auxiliary latch deadlocks latch bolt.

GR87 Rabbeted Glass Template

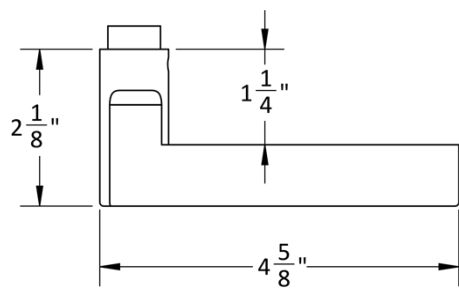


Important Note:
Glass template for
Glass $\frac{1}{2}$ " thick
range: .469 to .531

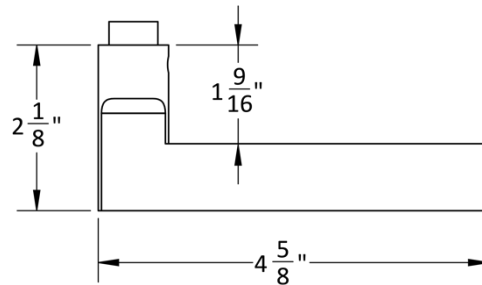
For use with:
GR8724
GR8725
GR8739
GR8756
GR8759
GR8701
GR8702
GR8703
GR8704
GR8705

Accurate Lever Trim

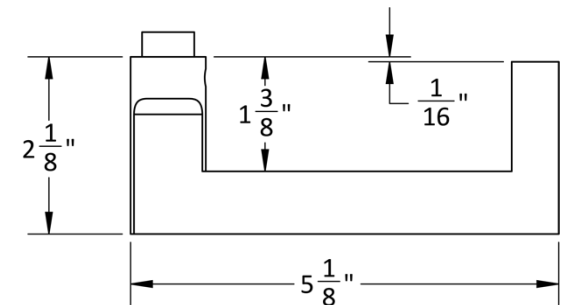
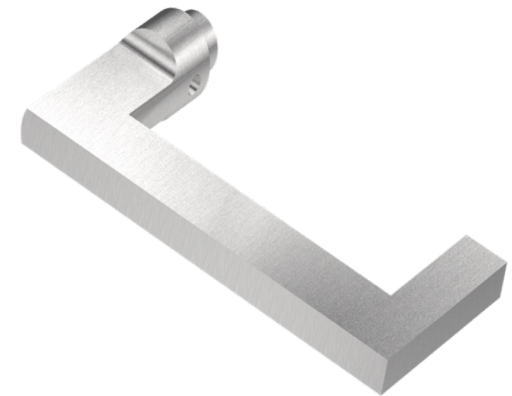
18L LEVER



19L LEVER

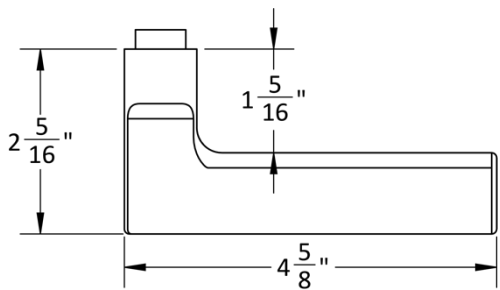


20L LEVER

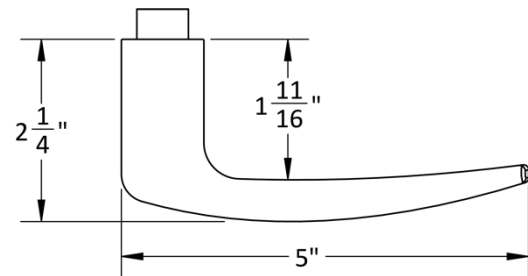


Accurate Lever Trim

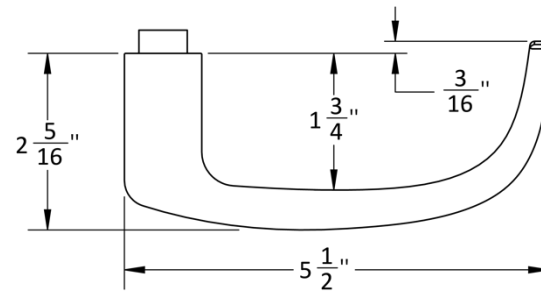
21L LEVER



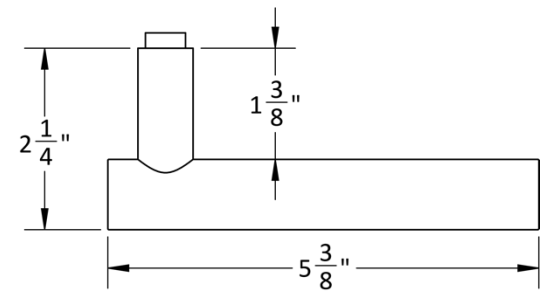
29L LEVER



39L LEVER

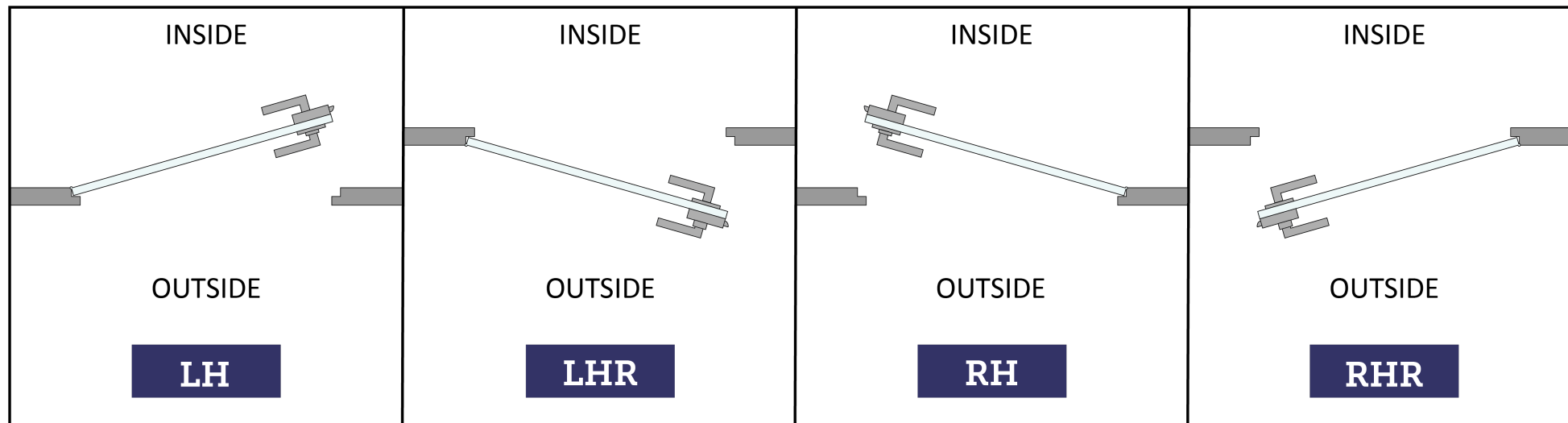


72L LEVER
Furnished Standard



HOW TO SPECIFY

HANDING



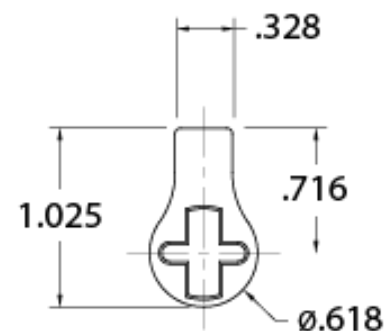
FINISHES

US28, ESN, US19

Other finishes available, please [contact us](#) for assistance.

CYLINDERS & KEYING

GR87 Series locks accept any standard American mortise cylinder with a straight cam (other cams may be required for functions not listed). For details on required cams and compatibility with other manufacturers' cylinders, please visit: [Accurate Support](#).



HOW TO SPECIFY

FUNCTION.BACKSET.TRIM.FINISH.HAND.DOORTHICKNESS.STRIKE

Functions

See available functions (pg. 6-7)

Backset

1 1/2" standard

Trim

Accurate Lever
Trim included
(pg. 9-10)

Finishes

See available
finishes (pg. 11)

Door Thickness

Standard 1/2" tempered glass.

SD Strike

Available for framed
applications.
No added cost.

EXAMPLES

GR87 Entrance | Glass Wall

E.g.: GR8756.112.18L.US28.RH.1/2

GR87 Office | Aluminum Frame (4 7/8" Strike)

E.g.: GR8759.112.19L.US19.RH.1/2.SD

GR87 Passage

E.g.: GR8725.112.29L.ESN.RH.1/2

NOTES

- GR87 Series can be set up for levers by other manufacturers upon request.
- Access control applications available.
- Cylinders must be specified separately if required.

**ACCURATE LOCK & HARDWARE
MANUFACTURERS OF LOCKS AND
CUSTOM ARCHITECTURAL HARDWARE**

1 Annie Place | Stamford, CT 06902

P: 203.348.8865

F: 203.348.5234

E: sales@accuratelockandhardware.com

www.accuratelockandhardware.com



AMERICAN CRAFTED
— **SINCE 1972** —