

BEHAVIORAL HEALTH AND LIGATURE RESISTANT PRODUCTS



ACCURATE

LOCK & HARDWARE

AMERICAN CRAFTED SINCE 1972

BEHAVIORAL HEALTHCARE PATIENT ROOM

- 1 Ligature Resistant Sliding Door System (LR-SDS)
- 2 Ligature Resistant Emergency Release (LR-ER)
- 3 Ligature Resistant Flush Pull (U7001AL)
- 4 Ligature Resistant Mirror
- 5 Ligature Resistant Grab Bar
- 6 Ligature Resistant Crescent Cabinet Pull (CP-CAB)

ON THE FOREFRONT OF LIGATURE RESISTANT SOLUTIONS

Accurate Lock and Hardware offers an extensive range of ligature resistant and ADA-compliant products that positively contribute to healing environments. Accurate's team of experts are dedicated to developing innovative solutions for specific challenges including retrofit scenarios, custom openings and safety compliance. Designed with patient care and staff safety in mind, all Accurate products are made entirely in the USA, which allows the ability to quickly adjust, adapt and produce the best solutions to meet the ever-changing needs of the healthcare industry. Simply put, your challenge is Accurate's challenge.

THE ACCURATE LEGACY

The progression to becoming the premier ligature resistant door hardware solution.

- 1988 Over 30 years ago, Accurate developed the **Ligature Resistant Safety Knob** that quickly became the industry standard for ligature resistance.
- 2005 Decades later, Accurate developed the **Clutching Lever** to address the ADA compliance mandate.
- 2007 Accurate developed and patented the **Crescent Handle**, once again setting the industry standard, eliminating the transverse ligature risks posed by clutching levers. Around this time, the **Beveled Safety Latch** was created for high-risk environments.
- 2016 Accurate introduced the **High Security Mortise Lock**, which is 300x stronger than the Grade 1 standard, for abusive environments.
- 2016 In response to a request from the State of NY Office of Mental Health, Accurate introduced the **Paperclip Resistant Crescent** line, which is universally recognized as the premier ligature resistant door hardware solution.
- 2017 Innovations that contribute to improving overall patient experience were developed including **SilentPac™ Solutions** and **Custom Etching Capabilities**.



Non-ADA Compliant



Strongly Discouraged in Patient Areas



THE ACCURATE ADVANTAGE

We are committed to innovation and always evolving products to solve a variety of challenges.

These icons are used throughout this product brochure to identify exclusive upgrades and special product features that may apply.



STRONG
High Security Mortise Lock

300x Stronger than the Grade 1 requirement



PAPERCLIP PROTECTION
Meets the Highest Safety Ratings

Reduces the chance of patient harm in high-risk areas



SILENT
SilentPac™ Solutions

Acoustically engineered to eliminate door disturbance



QUICK SHIP
RMS Program

Made + shipped in a week or less

CODE COMPLIANCE

Many of our ligature resistant products are recognized by the following leading industry organizations.



Accepted by New York State Office of Mental Health Patient Safety Standard (NYS-OMH)



Gold Seal of Approval withstanding paperclip testing by NYS-OMH



UL Listed
3-Hour Rating



Meets Requirements of the Buy American Act (BAA)



Meets Requirements of the Americans with Disabilities Act (ADA)

1-8

GOLD STANDARD SOLUTIONS

Recommended Ligature Resistant Sets

1-2

High Security Crescent Mortise Set

3-4

Beveled Latch Mortise Set

5-6

Crescent Cylindrical Set

7-8

Crescent Tubular Set

9-10

SLIDING DOOR SOLUTIONS

11-27

SPECIALTY APPLICATIONS

11-12

Ligature Resistant Spring Hinge Cover

13-14

Ligature Resistant Swinging Door System

15-16

Ligature Resistant Exit Device Trim

17-18

Crescent Handle Magnetic Hardware Sets

19-20

Push/Pull Mortise Set

21-22

Motor Drive Mortise Set

23-24

Auxiliary Sets

25

Confinement Room Function

26

Staff Restroom Function

27

Modified Asylum Function

28-33

SPECIAL OPTIONS

28

SilentPac Lever Dampening Disc

29

Ligature Resistant Strike

30

Custom Tailored Solutions

31

Custom Etching

32

'RMS' Rapid Make + Ship Program

33

Paperclip Protection

34-36

RESCUE HARDWARE

34-35

Anti-Barricade Hinge

36

Double Lip Strikes

37-43

TRIM + ACCESSORIES

37

Crescent Mortise Trim

38

Crescent Handles

39

Knob + Lever Mortise Trim

40

Thumb Turns

41

Other Trim

42

Crescent Accessories

43

Ligature Resistant Accessories

GOLD STANDARD SOLUTIONS



CH 9145SEC

CH 9100SEC

HIGH SECURITY CRESCENT MORTISE SET

THE GOLD STANDARD FOR LIGATURE RESISTANCE + ADA COMPLIANCE

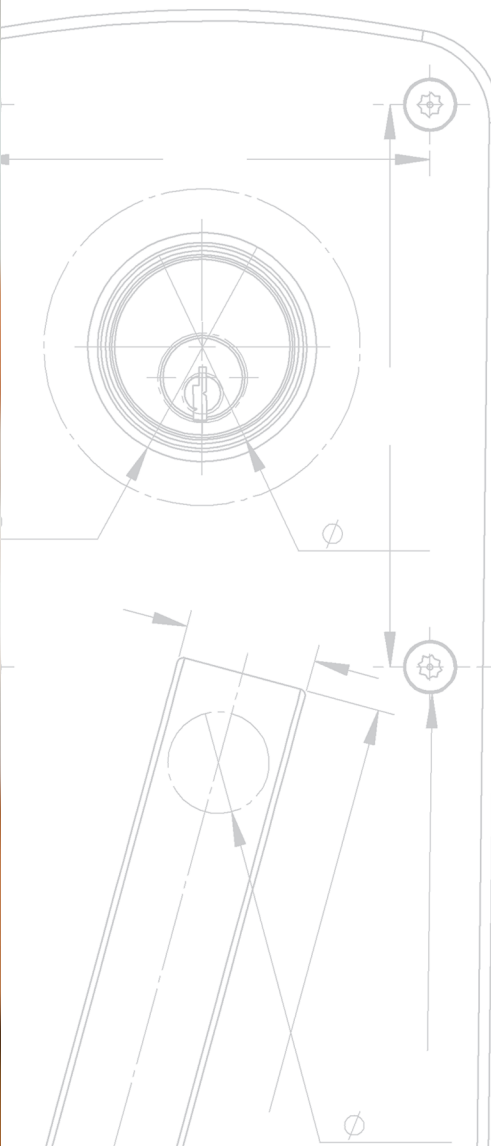
Offering advanced safety features, the High Security Crescent Mortise Set is the recommended solution for high, medium, and low risk areas for both new and retrofit installations. Its solid brass construction is designed with institutional strength and durability. This superior lockset comes standard with the High Security Mortise Lock proven to withstand 300x more abuse than the Grade 1 requirement*. It is also compatible with the SilentPac™ Lever Dampening Disc to eliminate disturbance from door noise and improve overall patient experience.

+ PRODUCT INFORMATION

- + The highest level of ligature resistance featuring Paperclip Protection
- + UL Listed 3 Hour
- + Compatible with any standard mortise cylinder (must be ordered with appropriate cam)
- + 626/630 finish standard, anti-microbial plating available
- + Supplied with Torx® Security Screws
- + Available in large backsets for specialty applications (e.g. acoustical doors, specialty stops, etc.)
- + Dimensions: 12³/₄" high by 4⁷/₁₆" wide with a projection of 2³/₄"

+ COMMON FUNCTIONS

CH 9145SEC	Classroom, Patient Rooms
CH 9125SEC	Passage, Non-locking Applications
CH 9159SEC	Storage
CH 9158SEC	Seclusion



*Grade 1 Lock Sets are also available.

Accurate Advantage Options + Features:



9100BL

BEVELED SAFETY LATCH

ADDITIONAL LIGATURE PROTECTION

Beveled Safety Latches were developed to further diminish ligature risks in behavioral healthcare settings. In some cases, the latch bolt itself has been used to anchor bed sheets (or similar) between the door and frame while the door is closed. An upward, downward, or horizontal force from inside the room will cause the latch to retract and release a ligature attempt making it a safe option for high-risk areas.



CH 9144BL

+ PRODUCT INFORMATION

- + Can be specified with all Accurate 9100 Grade 1 Mortise Locks with any trim, or Crescent Cylindrical Locksets
- + Latch bevel on top and bottom diminishes ligature points
- + Whenever the Beveled Safety Latch is specified, locks are modified not to have an anti-pick bolt. Please specify with caution, evaluating every opening for what is most important: safety or security.
- + Not recommended for applications where security is a concern like storage rooms, electric closets, asylum rooms or wherever doors swing out

+ COMMON FUNCTIONS

9143BL, 9144BL	Institutional Privacy, Patient Bathrooms
9124BL	Dormitory
9125BL	Non-locking Applications



The Beveled Safety Latch is also compatible with the Push/Pull Mortise Set, shown here.

Accurate Advantage Options + Features:



CH-CYL

CRESCENT CYLINDRICAL SET

THE SMART + SIMPLE SOLUTION

Cylindrical lock systems are popular in many hospital facilities, and conversion of these doors to mortise style can be labor intensive. The recommended Crescent Handle Cylindrical Lockset offers ease of installation and can quickly solve any retrofit issues with minimal disruption in a live unit for a quick patient safety upgrade.

+ PRODUCT INFORMATION

- + The highest level of ligature resistance featuring Paperclip Protection
- + UL Listed 3 Hour
- + For use on cylindrical (ANSI 161) door preparations
- + Furnished with a Grade 1, UL listed cylindrical lock (less cylinders)
- + Fitted for conventional or IC cylinders to preserve existing keying systems or furnished with conventional type cylinders
- + Available in electromechanical functions
- + Available with Beveled Safety Latch
- + 626/630 finish standard
- + Supplied with Torx® Security Screws
- + 2¾" backset standard, 3¾" or 5" available for retrofit or specialty applications
- + Dimensions: 8½" high by 6¾" wide with a projection of 2⅝"

+ COMMON FUNCTIONS

CH-CYL-CLA	Classroom, Patient Rooms
CH-CYL-PA	Non-locking Applications
CH-CYL-STO	Storage
CH-CYL-ASY	Seclusion

Accurate Advantage Options + Features:  



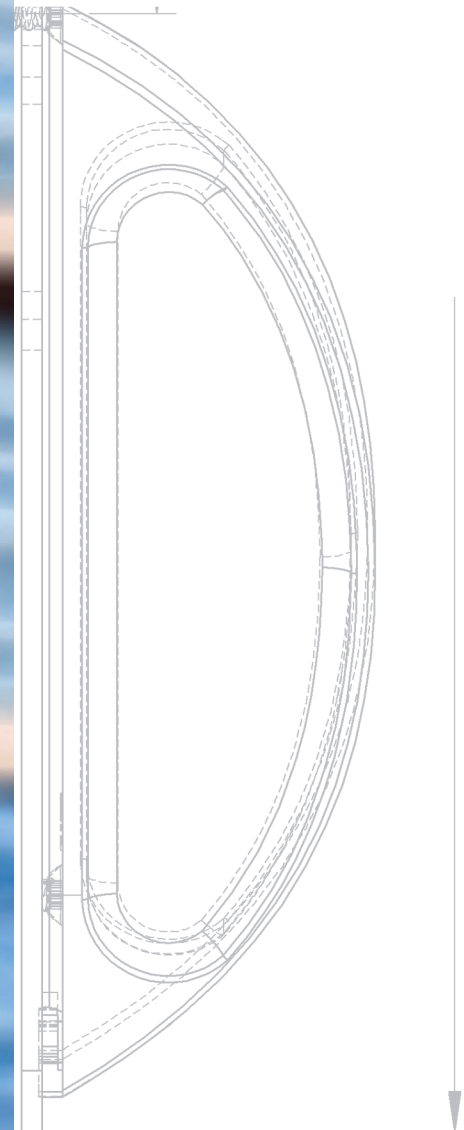
CH-CYL-CLA

CH-TUB

CRESCENT TUBULAR SET

THE GOLD STANDARD FOR PASSAGE DOORS

An alternative retrofit option for existing low-traffic openings like closets or storage areas. The Crescent Tubular Lockset is designed for passage applications on non-fire rated doors.



+ PRODUCT INFORMATION

- + The highest level of ligature resistance featuring Paperclip Protection
- + For use on cylindrical (ANSI 161) door preparations
- + 626/630 finish standard, anti-microbial plating available
- + Supplied with Torx® Security Screws
- + 2¾" backset standard, custom cover plates available for retrofit applications
- + Dimensions: 7¹³/₁₆" high by 4⁷/₁₆" wide with a projection of 2³/₄"

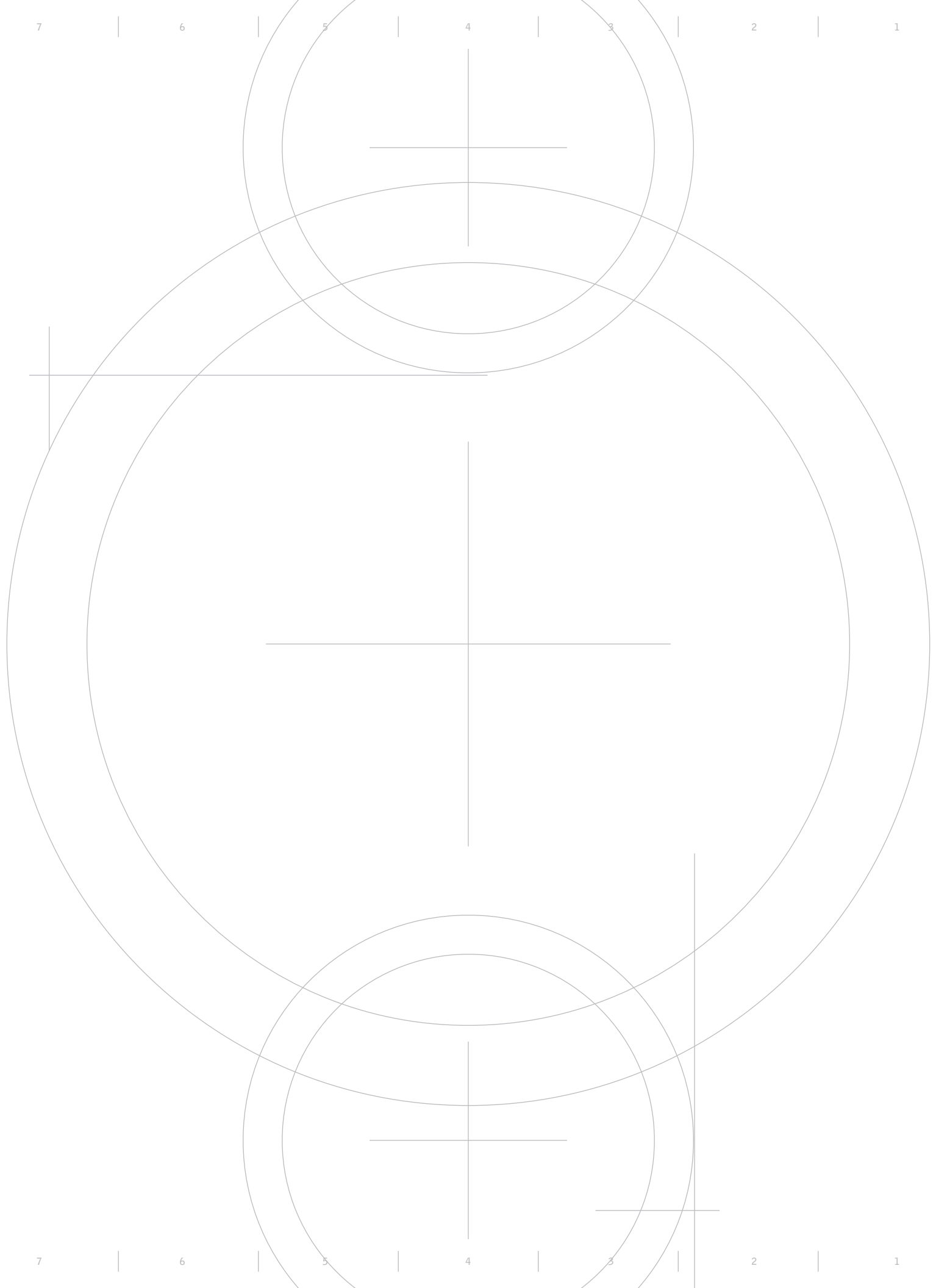
+ COMMON FUNCTIONS

CH-TUB | Passage, Storage

CH-TUB

Accurate Advantage Options + Features:





LIGATURE RESISTANT SLIDING DOOR SYSTEM



DESIGNED WITH PATIENT CARE + STAFF SAFETY IN MIND

PRODUCT INFORMATION



TRACK CLOSE UP

SEAMLESS

- + Concealed Track System hangs a 1 3/4" door with a surface applied minimal gap without any exposed anchor points or cavities
- + Concealed Floor Guide keeps door flush against wall
- + Concealed Vertical Rod Bolt locks into track providing privacy with no accessible latch bolt or strike
- + Ligature Resistant thumb turn and flush pull



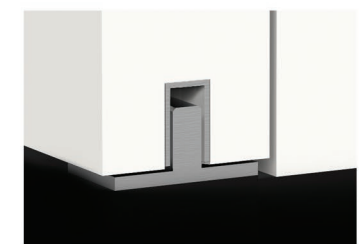
TRACK CUT AWAY

SAFE

- + Top door edge not accessible as a ligature point
- + Eliminates barricade tactics and using door as a weapon

SECURE

- + Privacy function and keyed deadbolt available
- + Includes a clutch override feature
- + In addition to locking in the "closed" position, other positions can be added



FLOOR GUIDE

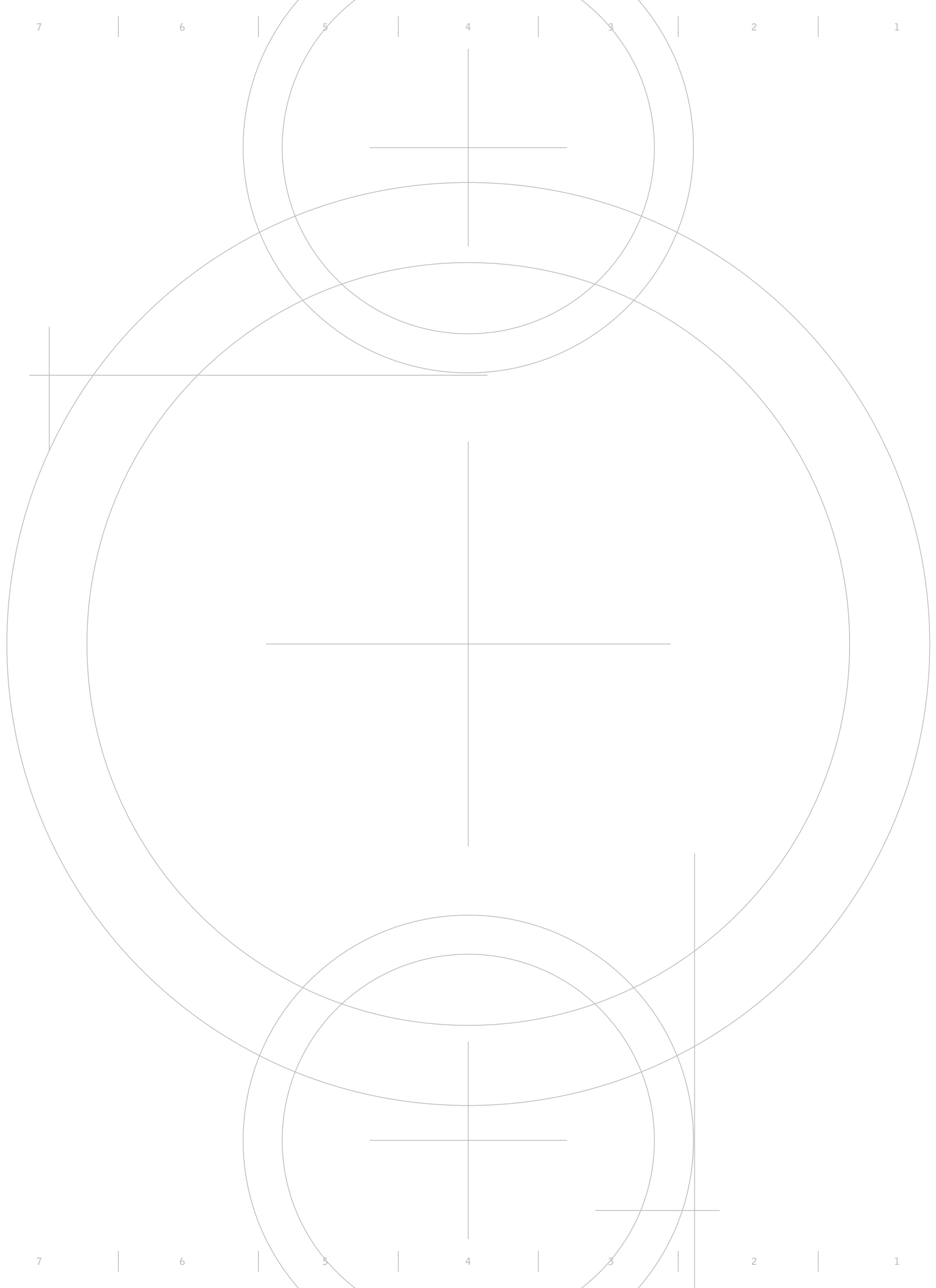
SILENT

- + Dampened closure allows quiet operation and prevents slamming doors

SPACE SAVING

- + Contributes to smaller patient room design saving up to 45% of space on average

LR-SDS-5



**SPECIALTY
APPLICATIONS**



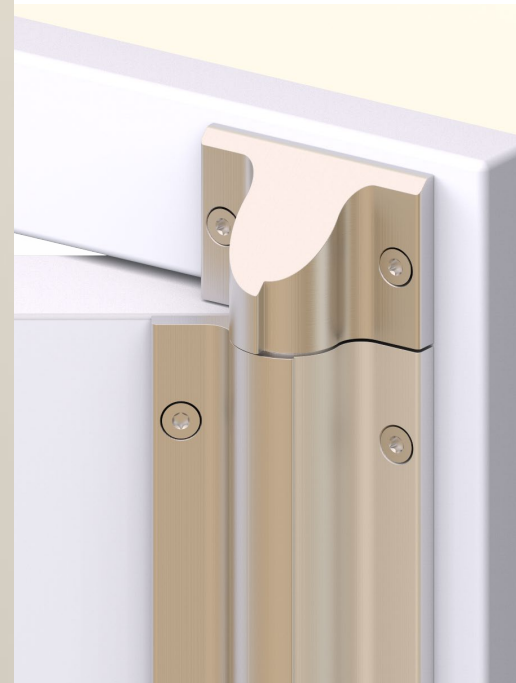
LR-CLOSE

LR-CLOSE

LIGATURE RESISTANT SPRING HINGE COVER

A SAFE ALTERNATIVE FOR A DOOR CLOSER

Most commercially available door closers pose a ligature risk. This is a challenge for applications that require the opening to be self-closing and ligature resistant. In response, the LR-CLOSE offers a safe alternative that meets criteria by providing a solid hinge cover that installs over spring hinges on that patient side of the doors.



The addition of a safety finial provides the finishing touch for ligature resistance with a 45° sloped design.

+ PRODUCT INFORMATION

- + Conceals self-closing spring hinges for ligature resistant applications.
- + Ensures accurate alignment with the top of the finial to hinge cover.
- + Establishes consistent spacing between finial and hinge cover.
- + Blocks string or other ligature apparatus from lodging in the gap.
- + Allows 120° of entrance clearance.

+ COMMON APPLICATIONS

- Group/Activity Rooms**
- Physician-Patient Consultation Rooms**
- Interview Rooms**
- Supply Closets**
- Staff Area Entries**



LR-SW

LIGATURE RESISTANT SWINGING DOOR SYSTEM

TO PROVIDE SAFETY + PRIVACY FOR PATIENT BATHROOMS

Designed to be a heavy-duty, cost-effective solution that provides increased safety and privacy in the bathroom. This swinging door solution can hold over 300lbs of weight and operates without springs, which removes possible ligature points and allows the door to swing in both directions. It can open to 90° in either direction, stay open by design, and when moved to approximately 60° will self-close centered to the opening.



The top of the door can be crowned, square or customized to meet specifications.

+ PRODUCT INFORMATION

- + Door operates without springs to remove ligature point.
- + Door can stay in open position.
- + Can hold over 300lbs.
- + Dimensions: 60" high by 36" wide. Other door heights are available.

+ COMMON FINISHES

- Black | White Plastic**
- Frosted Polycarbonate**
- Aluminum**
- Wood Grained Plastic**

NIGHTINGALE
AWARDS
2019

Gold
Award

NIGHTINGALE
AWARDS
2019

Innovation
Award



LR-EX-CH



LR-INEX-VD22

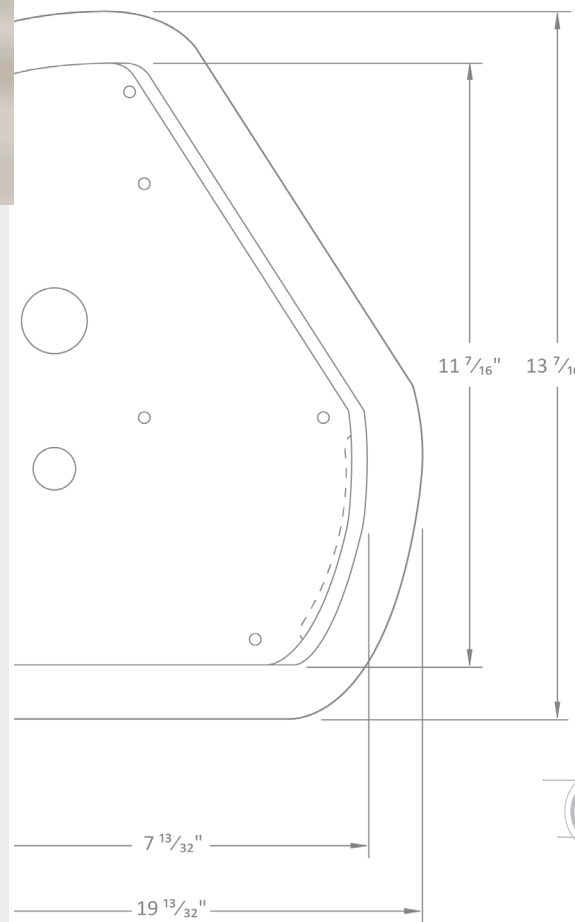
LR-EX

LIGATURE RESISTANT EXIT DEVICE TRIM

A unique solution that retrofits existing panic device trim to create a ligature resistant door opening. Ideal for adapting original panic device components with non-compliant trim, the LR-EX Series upgrades panic device openings to meet safety standards without affecting the rating of existing trim.

PRODUCT INFORMATION

- + Accurate's Gold Standard Ligature Resistant Crescent Handle Design removes any risk of ligature points while also eliminating the pooling of fluids on top of the handle.
- + LR-EX-CH (lever side trim) features a larger plate that covers the existing door trim without hindering accessibility and offering increased durability.
- + LR-EX-CH works with most manufacturers' panic device trim and does not affect ratings of existing trim (e.g., if the trim being housed is fire-rated, that rating remains).
- + The LR-EX-CH can be paired with the LR-INEX-VD22 Ligature Resistant Panic Bar, specifically designed to work with Von Duprin 22 Series.
- + Made from anodized aluminum and available in a variety of finishes and colors.



COMMON CRESCENT HANDLE OPTIONS

CH-996L-BE	Passage
CH-996L	Classroom
CP-C-VD99	Storeroom

CRESCENT HANDLE MAGNETIC HARDWARE SETS

CH 9100ML

CRESCENT MAGNETIC LATCH

The Ligature Resistant Crescent Magnetic Latch is designed to further eliminate ligature points on the opening. The latch is designed to stay flush until the door is closed and it is pulled into the strike by a rare-earth magnet. It simplifies the opening by having a non-lipped strike and no protruding latch.



+ PRODUCT INFORMATION

- + The highest level of ligature resistance featuring Paperclip Protection.
- + Meets BHMA 156.34 Ligature Resistant Trim Standard
- + Compatible with any standard mortise cylinder (must be ordered with appropriate cam).
- + US26D/US32D finish standard, anti-microbial plating available.
- + Supplied with Torx® Security Screws.

CH 9100ML-VRT

CRESCENT MAGNETIC VERTICAL ROD LOCK

The Ligature Resistant Magnetic Vertical Rod Top Lock is designed to stay flush until it is pulled into the strike by the magnet, essentially removing the latch as a ligature point and creating a safer opening for areas of all risk levels. There is no visible strike and the handle will retract back to the starting position.



+ PRODUCT INFORMATION

- + The highest level of ligature resistance featuring Paperclip Protection.
- + Meets BHMA 156.34 Ligature Resistant Trim Standard
- + Compatible with any standard mortise cylinder (must be ordered with appropriate cam).
- + US26D/US32D finish standard, anti-microbial plating available.
- + Supplied with Torx® Security Screws.

CH 9100MBL

CRESCENT MAGNETIC BEVELED LATCH

The Ligature Resistant Crescent Beveled Magnetic Latch is designed to further eliminate ligature points on the opening. The latch is designed to stay flush until the door is closed and it is pulled into the strike by a rare-earth magnet. The Beveled Latch was developed to further diminish ligature risks in behavioral healthcare settings. An upward, downward, or horizontal force from inside the room will cause the latch to retract and release a ligature attempt.

+ PRODUCT INFORMATION

- + The highest level of ligature resistance featuring Paperclip Protection.
- + Meets BHMA 156.34 Ligature Resistant Trim Standard
- + Compatible with any standard mortise cylinder (must be ordered with appropriate cam).
- + US26D/US32D finish standard, anti-microbial plating available.
- + Supplied with Torx® Security Screws.



CH 9100MBL



9100ALP

9100ALP

SAFETY PUSH PULL MORTISE SET

ACCESSIBILITY WITH EASE OF USE

An alternative to the Crescent Handle, the Safety Push Pull Mortise Set is an easy-to-operate ligature resistant solution. Evolved from traditional push/pull handles that are popular in many healthcare facilities, new safety design elements give it a sleek and low-profile aesthetic. The push side allows hands-free operation, while the pull side features easy egress.



PULL SIDE TRIM



PUSH SIDE TRIM



PRODUCT INFORMATION

- + UL listed 3 Hour
- + Compatible with any standard mortise cylinder (must be ordered with appropriate cam)
- + 628 Satin Aluminum finish standard
- + Supplied with Torx® Security Screws
- + Available in electrified functions
- + Optional beveled latch
- + Custom Pull x Pull option available
- + Dimensions: 7" high by 4½" wide with a projection of 2" on pull side and 7⁄8" on push side



shown in a
SALLY PORT APPLICATION

CH M915XE

CRESCENT MOTOR DRIVE ELECTRIC MORTISE SET

FOR EFFICIENT + FLEXIBLE ACCESS CONTROL

PRODUCT INFORMATION

IMPROVED FLEXIBILITY

- + Universal output voltage
- + Can easily be changed from FAIL SECURE to FAIL SAFE to adapt to design variations

MORE FUNCTIONALITY

- + State-of-the-art monitoring functions

LONGER LIFE

- + Adaptable to new technology

SAVE POWER, SAVE MONEY

- + A motor drive lock costs significantly less per year to operate at \$0.25, compared to a solenoid lock that costs \$8.33

STAY COOL

- + Low current draw produces minimal heat to eliminate "hot levers"

BE GREEN

- + Low power requirement is ideal for environmentally friendly control systems

IN GOOD COMPANY

- + The same motor functionality is used by other trusted manufacturers including: Schlage, Sargent, Corbin Russwin, Hager, etc.

MONITORING FUNCTIONS

AE Authorized Egress/Request to Exit

AM Auxiliary Latch Monitor

LB Locking Bar Monitor

LM Latch Bolt Monitor

SM Combined AM + LB Monitor

DPS Door Position Monitor

LPF Lock-out Privacy

LR 7200

AUXILIARY LOCK SETS

ADDITIONAL SECURITY

LR 7200 Series Auxiliary Mortise Locks can be used in a variety of applications where additional security is desired. Available with standard or High Security deadbolt, pair with versatile trim options and use anywhere deadlocks may be needed.

+ COMMON FUNCTIONS

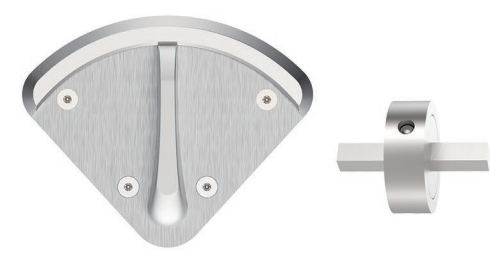


LR 7201	Single Cylinder Deadlock
LR 7202	Double Cylinder Deadlock
LR 7203	Cylinder Outside, Thumb Turn Inside
LR 7203i	Cylinder with Indicator Outside, Thumb Turn Inside
LR 7205	Emergency Release, Thumb Turn

2 3/4" backset standard, other backsets available.

ALT-ADA-D with Clutch

Enables a key override for anti-barricade capability to prevent a forcibly held thumb turn restricting access.



For use with 7203, 7205

7200SCi Cylinder Indicator

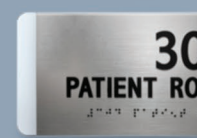


For use with 7201, 7202, 7203i


LR-ER Emergency Release



For use with 7205



shown on a WICKET DOOR

Accurate Advantage Options + Features: 

CH 9168SEC

SPECIALTY MORTISE FUNCTIONS

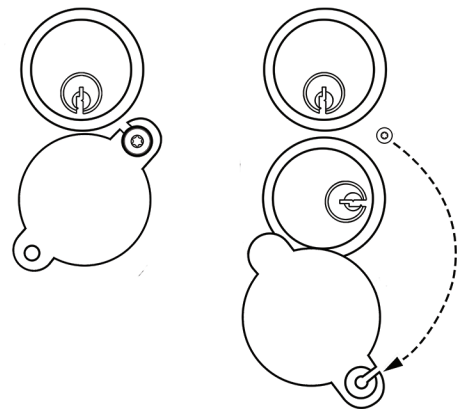
DOUBLE CYLINDER CONFINEMENT ROOM LOCKSET

The vandal-resistant, patent-pending Confinement Room Lockset is designed with a concealed second cylinder. This alternate cylinder is designed to be used when the standard cylinder has been tampered with and is no longer operative. Available with both ligature resistant Crescent Pulls or Flush Pull trim, the double cylinder adds a layer of emergency accessibility.



+ PRODUCT INFORMATION

- + Asylum function standard
- + Furnished with High Security Mortise Lock
- + 626/630 finish standard, anti-microbial plating available
- + Supplied with Torx® Security Screws
- + 2-3/4" backset standard, other backsets available
- + Crescent Pull trim available
- + Dimensions: 15 3/4" high by 4 7/16" wide with a projection of 1 3/16"



TO OPERATE:

Loosen Torx® Security Screw and swing cover to expose back up cylinder. Key retracts latch temporarily, and the Crescent Pull or Flush Pull allows door control.

CH 9147i

SPECIALTY MORTISE FUNCTIONS

STAFF RESTROOM LOCKSET

The 9147i Specialty Function with Occupancy Indicator is designed for privacy applications where authorized access is always needed. Clearly showing when room is in use, it is popularly used for staff restrooms or similar environments where occupancy status is desired.



+ PRODUCT INFORMATION

- + Inside thumb turn confirms status of outside indicator
- + Outside lever always rigid, entry by key only
- + Indicator automatically reverts to green (unoccupied) when door is closed
- + Available with High Security or Grade 1 Mortise Lock
- + 626/630 finish standard, anti-microbial plating available
- + Supplied with Torx® Security Screws
- + 2 3/4" backset standard, other backsets available
- + Dimensions: 12 3/4" high by 4 7/16" wide with a projection of 2 1/8"

CH 9142

SPECIALTY MORTISE FUNCTIONS

ASNTB MODIFIED ASYLUM LOCKSET

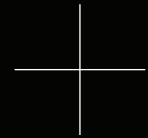
This modified function allows the inside cylinder to lock/unlock the inside handle and conversely, the outside cylinder to lock/unlock the outside handle. Commonly used with electric strikes, the lock is supplied with no trigger bolt.



PRODUCT INFORMATION

- + Inside and outside handles are independent of each other and can remain locked or unlocked if positioned by the cylinder on its side
- + After egress from unlocked side, door will remain locked (from locked side)
- + Available with High Security or Grade 1 Mortise Lock
- + 626/630 finish standard, anti-microbial plating available
- + Supplied with Torx® Security Screws
- + 2¾" backset standard, other backsets available
- + Dimensions: 12¾" high by 4⅞" wide with a projection of 2¼"

SPECIAL OPTIONS



SILENTPAC™ SOLUTIONS

IMPROVE PATIENT EXPERIENCE

Acoustically engineered to eliminate door disturbance, the award-winning SilentPac™ Lever Dampening Disc makes lever return smoother and slower to avoid the abrupt snapback of handles into place. Compatible with Crescent Handle Mortise Lock Sets, this hardware innovation dramatically reduces noise from opening and closing doors, allowing behavioral healthcare environments to improve overall patient experience.



EQUAL TO AMBIENT NOISE

Handle operation adds zero decibels.



SIMPLE INSTALLATION

Ideal for both new doors and retrofit applications.



MAINTAIN AESTHETICS

Designed to be customizable based on your facilities' needs.



SilentPac compatible ligature resistant products are noted with SILENT icon throughout this brochure.



LR-STK

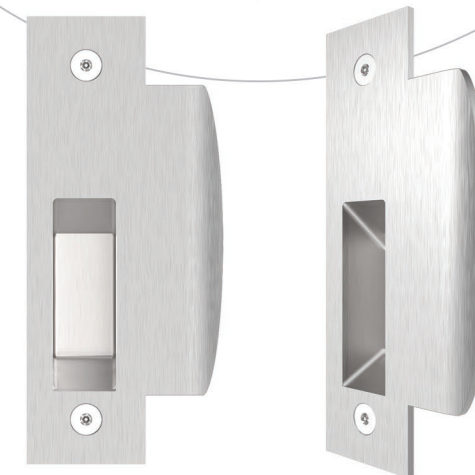
LIGATURE RESISTANT STRIKE

ADDITIONAL SAFETY

This ligature resistant strike improves the safety of the overall opening. Recommended for use with the 9100BL Beveled Latch, it can also be used with the CH-CYL Cylindrical Sets, or customized to work with other manufacturers' locks.



**TAPERED LATCH BOLT
OPENING ELIMINATES
ANCHOR POINTS
FURTHER PREVENTING
LIGATURE RISK.**



CUSTOM TAILORED SOLUTIONS

FOR RETROFIT + SPECIAL APPLICATIONS

New door hardware can improve safety standards and bring doors to compliance. Many times, special applications and retrofit scenarios require specific modifications. We are committed to developing unique solutions for the most challenging doors including: custom size and shape plates, ligature resistant handles for exit devices, bit key institutional locks, and a wide variety of special applications.



CRESCENT CYLINDRICAL SET

Furnished with custom plate for a door with a window



GLASS PATCH CRESCENT PULL

For reception area glass doors



NARROW CRESCENT PULL

For narrow stile doors

CUSTOM ETCHING

PERSONALIZED DETAILS

Most trim options can be designed to match any room aesthetic or theme in an effort to create a more inviting, soothing, and personalized healing environment. From original artwork, to favorite characters, or corporate logos – possibilities are endless.



CRESCENT MORTISE TRIM

CRESCENT CYLINDRICAL TRIM

LIGATURE RESISTANT MIRRORS

'RMS' RAPID MAKE + SHIP PROGRAM

QUICK DELIVERY TO BRING YOUR DOORS TO COMPLIANCE

+ PROGRAM INFORMATION

RETROFIT READY

- + Ideal to upgrade existing doors quickly and efficiently

MADE + SHIPPED IN A WEEK OR LESS

- + Orders received by 3pm EST will be processed, made and shipped within 3-5 business days via FREE Fedex Freight Shipping

SETS OF 15 MINIMUM

- + Minimum 15 Crescent Handle Sets per RMS Program order (part numbers can be combined to meet minimum)

CERTAIN RESTRICTIONS/LIMITATIONS MAY APPLY



CRESCENT MORTISE SETS

15-20 Sets per order

ELIGIBLE SETS

- + Passage (CH 9125)
- + Classroom (CH 9145)
- + Asylum (CH 9158)
- + Storeroom (CH 9159)



CRESCENT CYLINDRICAL SETS

15-25 Sets per order

ELIGIBLE SETS

- + CH-CYL-CLA
- + CH-CYL-STO
- + CH-CYL-PA
- + CH-CYL-ASY

RMS Program ligature resistant products are noted with QUICK SHIP icon throughout this brochure.



PAPERCLIP PROTECTION

MEETING THE HIGHEST SAFETY RATING

The presence of paperclips in even the most rigorously monitored facilities can be difficult to control. It can be assumed that almost anything in the patient environment can be compromised by a paperclip. Accurate has evolved the design of its Crescent Handle Mortise, Cylindrical and Tubular Sets to address this concern for high-risk areas and offer paperclip protection a standard feature. All locksets have withstood the rigorous paperclip testing by the NYS-OMH¹, achieving the highest level of ligature resistance.



CRESCENT MORTISE SET



CRESCENT CYLINDRICAL SET

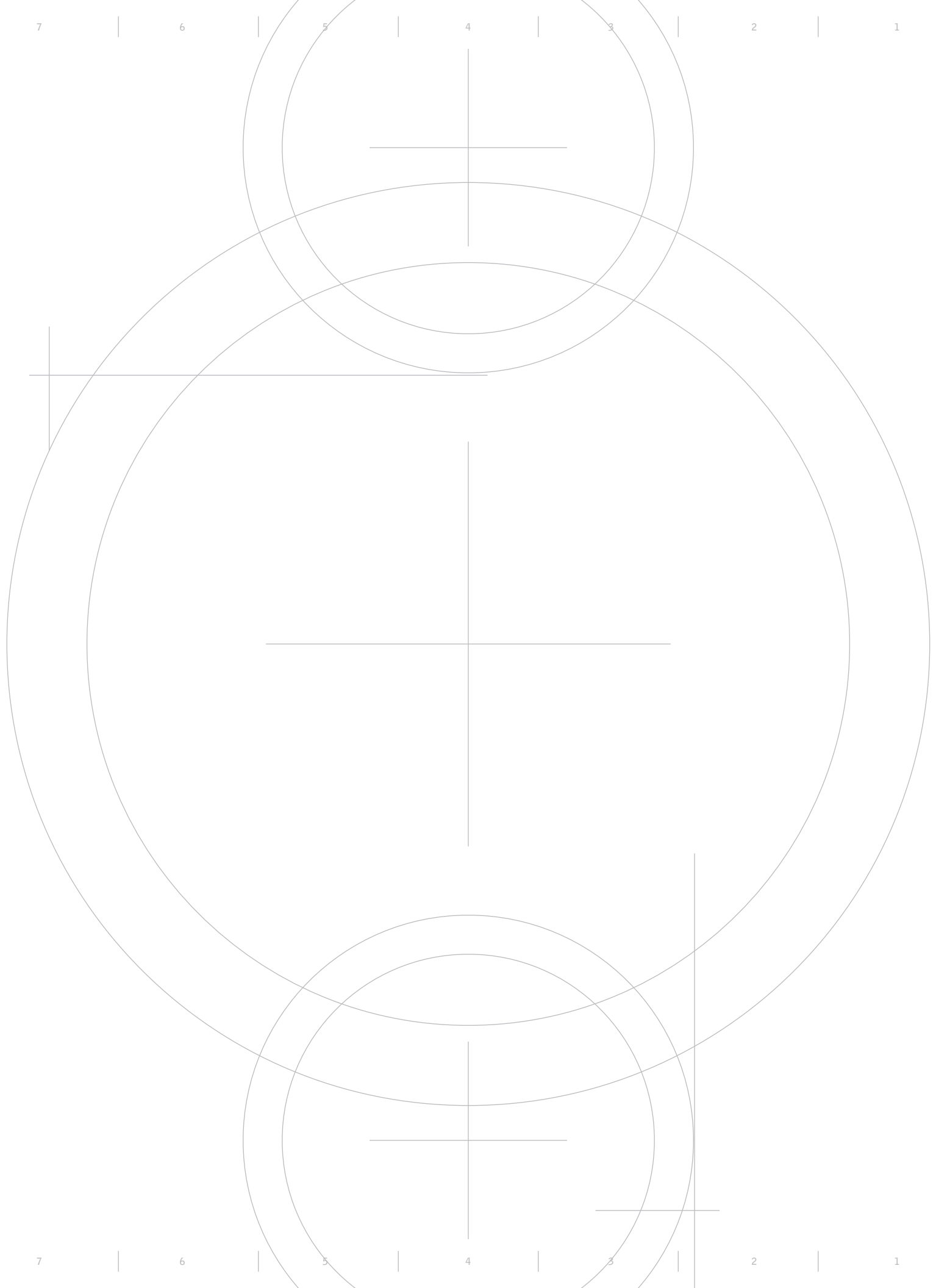


CRESCENT TUBULAR SET

¹ New York State has a large, multi-faceted mental health system that serves more than 700,000 individuals each year. The Office of Mental Health (OMH) operates psychiatric centers across the State, and also regulates, certifies and oversees more than 4,500 programs, which are operated by local governments and nonprofit agencies. These programs include various inpatient and outpatient programs, emergency community support, residential and family care programs. Visit omh.ny.gov for more information.

Paperclip Protection ligature resistant products are noted with the PAPERCLIP icon throughout this brochure.





RESCUE HARDWARE

PV-ABH

ANTI-BARRICADE HINGE

OPEN IN CASE OF EMERGENCY

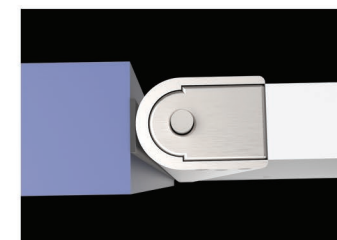
Providing the ultimate in safety for behavioral healthcare environments, this unique, dual-swing hinge allows immediate room access in a barricade scenario. Center hung pivots feature a retractable top and bottom pivot that allows caregivers to rapidly unhinge the door to gain access. Pivots feature removable pins for easy installation for both new and retrofit doors.



PIVOT CLOSE UP



PIVOT CUT AWAY



PIVOT TOP VIEW



PRODUCT INFORMATION

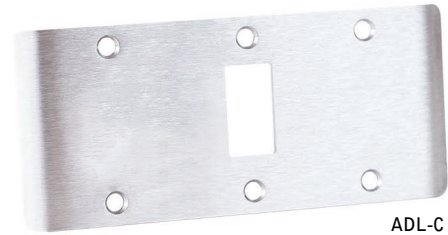
- + Fits standard 1 $\frac{3}{4}$ " doors
- + Retrofit application may require door modification
- + Top pivot mounts flush with door frame, bottom pivot mounts into floor
- + Pivot point remains constant at 1 $\frac{1}{16}$ " from the edge of door, centered in thickness of door
- + Can be used on single and double doors up to 250 lbs
- + 626/630 finish standard

PV-ABH

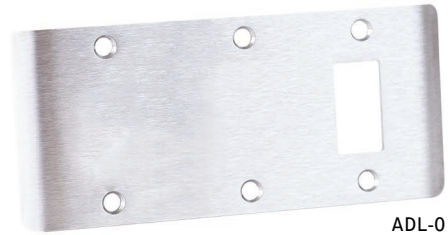
DOUBLE LIP STRIKES

ALLOW DOORS TO OPEN IN BOTH DIRECTIONS

Available in various jamb widths for center or offset doors.

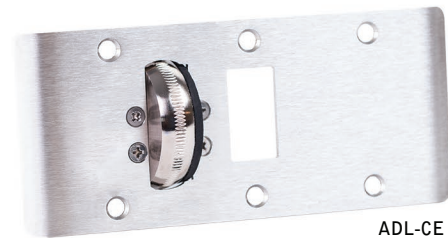


ADL-C

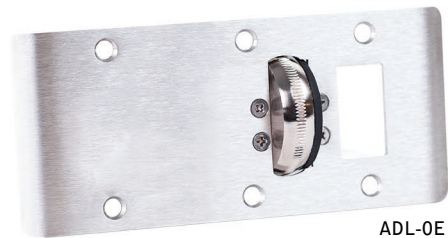


ADL-O

TRADITIONAL DOUBLE LIP STRIKES



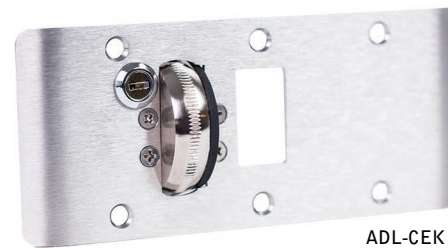
ADL-CE



ADL-OE

DOUBLE LIP STRIKES WITH EMERGENCY STOP

Featuring a heavy duty stop to absorb impact of slamming doors



ADL-CEK

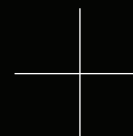


ADL-OEK

DOUBLE LIP STRIKES WITH KEYED EMERGENCY STOP

Featuring a keyed heavy duty stop designed to prevent unauthorized outswing of door

TRIM + ACCESSORIES



CRESCENT MORTISE TRIM OPTIONS

INTUITIVE LIGATURE RESISTANT TRIM

+ PRODUCT INFORMATION

- + Offered in various sizes to fit different mortise push/pull applications
- + Available for single side, surface mounted installation, as well as through-bolted for added strength
- + Solid stainless steel back plate, available in different sizes and options based on desired functionality
- + 626/630 finish back plate standard
- + Custom plate sizes available
- + Furnished with Torx® Security Screws



CP-S SMALL PLATE

Dimensions: 8 1/8" high by 4 7/16" wide with a projection of 2 3/8"



NCP NARROW PULL

Dimensions: 8 1/2" high by 2" wide with a projection of 2 1/8"



CP-B
Blank Crescent Pull

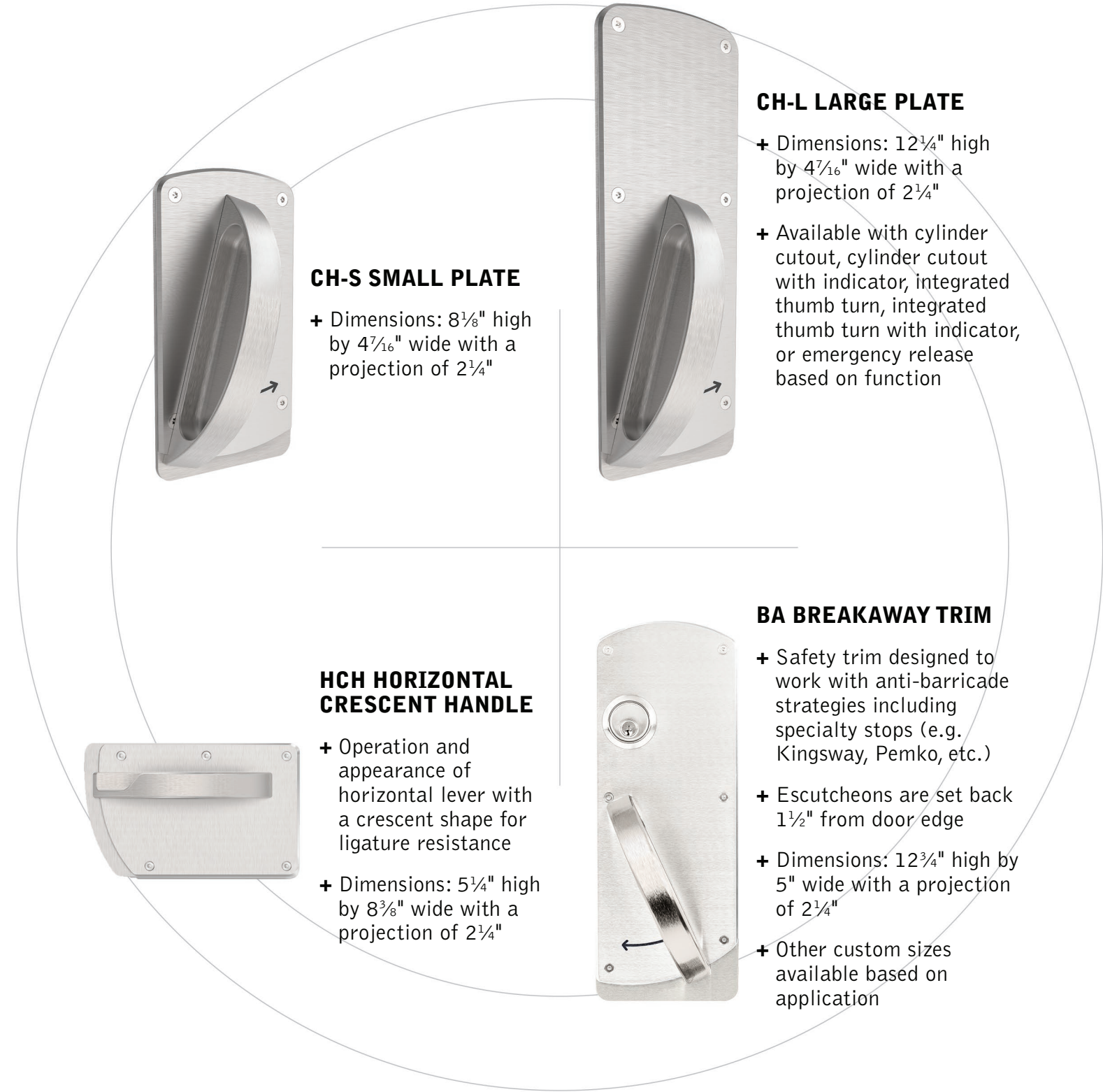


CP-C
Crescent Pull with Cylinder

CP LARGE PLATE

Dimensions: 12 3/4" high by 4 7/16" wide with a projection of 2 3/8"

CRESCENT HANDLES



CH-S SMALL PLATE

+ Dimensions: 8 1/8" high by 4 7/16" wide with a projection of 2 3/4"

CH-L LARGE PLATE

+ Dimensions: 12 1/4" high by 4 7/16" wide with a projection of 2 3/4"

+ Available with cylinder cutout, cylinder cutout with indicator, integrated thumb turn, integrated thumb turn with indicator, or emergency release based on function

HCH HORIZONTAL CRESCENT HANDLE

+ Operation and appearance of horizontal lever with a crescent shape for ligature resistance

+ Dimensions: 5 1/4" high by 8 3/8" wide with a projection of 2 1/4"

BA BREAKAWAY TRIM

+ Safety trim designed to work with anti-barricade strategies including specialty stops (e.g. Kingsway, Pemko, etc.)

+ Escutcheons are set back 1 1/2" from door edge

+ Dimensions: 12 3/4" high by 5" wide with a projection of 2 1/4"

+ Other custom sizes available based on application

KNOB + LEVER MORTISE TRIM

OPTIONS FOR LOW RISK AREAS

+ PRODUCT INFORMATION

- + Solid brass construction designed with institutional strength and durability
- + 626 finish standard



MLSK SAFETY KNOB

- + For use with mortise locks and tubular latches
- + Deep detents fit to fingertips, maximize capacity to turn and pull without compromising safety and facilitate ease of use
- + Non-ADA Compliant
- + Dimensions: 2 $\frac{3}{4}$ " high by 2 $\frac{3}{4}$ " wide with a projection of 2 $\frac{1}{4}$ "

LCSM SAFETY LEVER

- + Use with caution, not recommended for high risk areas (specify the Crescent Handle for safest solution)
- + Designed with clutch mechanism that releases lever into the downward or upward position when under pressure limiting ligature opportunities
- + Dimensions: 3" high by 6 $\frac{11}{16}$ " wide with a projection of 1 $\frac{7}{8}$ "



THUMB TURNS

+ PRODUCT INFORMATION

- + Solid brass construction designed with institutional strength and durability
- + 626/630, anti-microbial finish available
- + Furnished with Torx® Security Screws
- + Customizable based on application



ALT-ADA-D THUMB TURN

- + For use with locks with a deadbolt, thumb turn has a wider rotation
- + Dimensions: 3 $\frac{5}{8}$ " high by 4 $\frac{1}{2}$ " wide with a projection of $\frac{7}{8}$ "



ALT-ADA-P THUMB TURN

- + For use with locks without a deadbolt, thumb turn has smaller rotation
- + Dimensions: 3 $\frac{5}{8}$ " high by 3 $\frac{3}{4}$ " wide with a projection of $\frac{7}{8}$ "



Designed for Schlage
Tubular Deadbolt

CUSTOM ALT-ADA THUMB TURNS

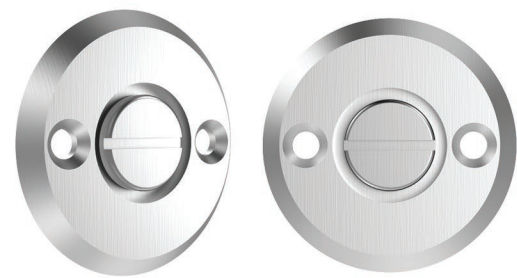
Examples of thumb turns designed to work with other manufacturers' products or custom applications

OTHER TRIM

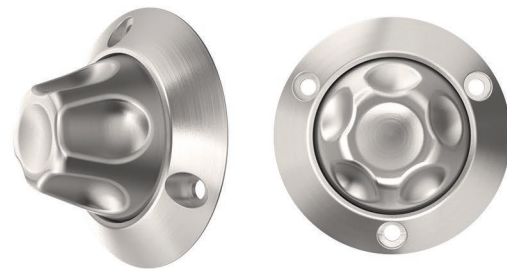
INTUITIVE LIGATURE RESISTANT TRIM

+ PRODUCT INFORMATION

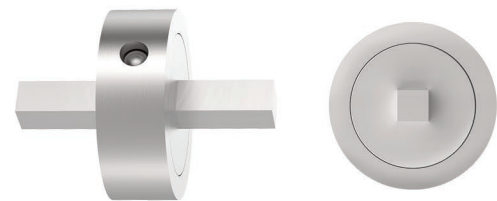
- + 626/630 standard, anti-microbial finish available
- + Furnished with Torx® Security Screws
- + Fully customizable based on application



**LR-ER
EMERGENCY RELEASE**



**ALT-MLSK
MORTISE LOCK SAFETY KNOB
THUMB TURN**



CLUTCH

For use with ALT-ADA thumb turns to enable a key override



**7200SCi
CYLINDER INDICATOR**

CRESCENT ACCESSORIES

+ PRODUCT INFORMATION

- + Solid brass construction designed with institutional strength and durability
- + 626/630 standard, anti-microbial finish available
- + Custom sizes and finishes available
- + Furnished with Torx® Security Screws



CP-CAB CRESCENT CABINET PULL

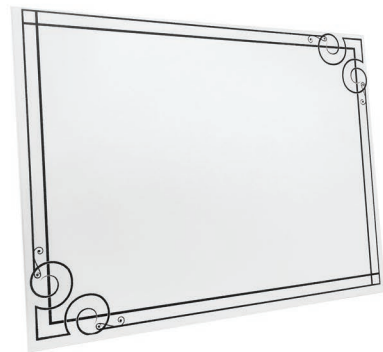
- + Miniature crescent shaped pull for cabinet doors or drawers. When installed vertically, the pull is non-loopable and features tamper-resistant security grade fastening hardware.
- + Specify CP-CAB-H for pull to be installed horizontally mounted. Top of the pull will not present any cavities that can be used as an anchor point or reservoir for fluids.
- + Dimensions: 3½" high by ½" wide with a projection of 1⅛"

U7001AL LIGATURE RESISTANT FLUSH PULL

- + Premium flush pull with beveled cup to prevent ligature points. Ideal for use in patient restrooms or closets
- + Dimensions: 7" high by 2¼" wide with a projection of ⅜"



LIGATURE RESISTANT ACCESSORIES



LIGATURE RESISTANT MIRRORS

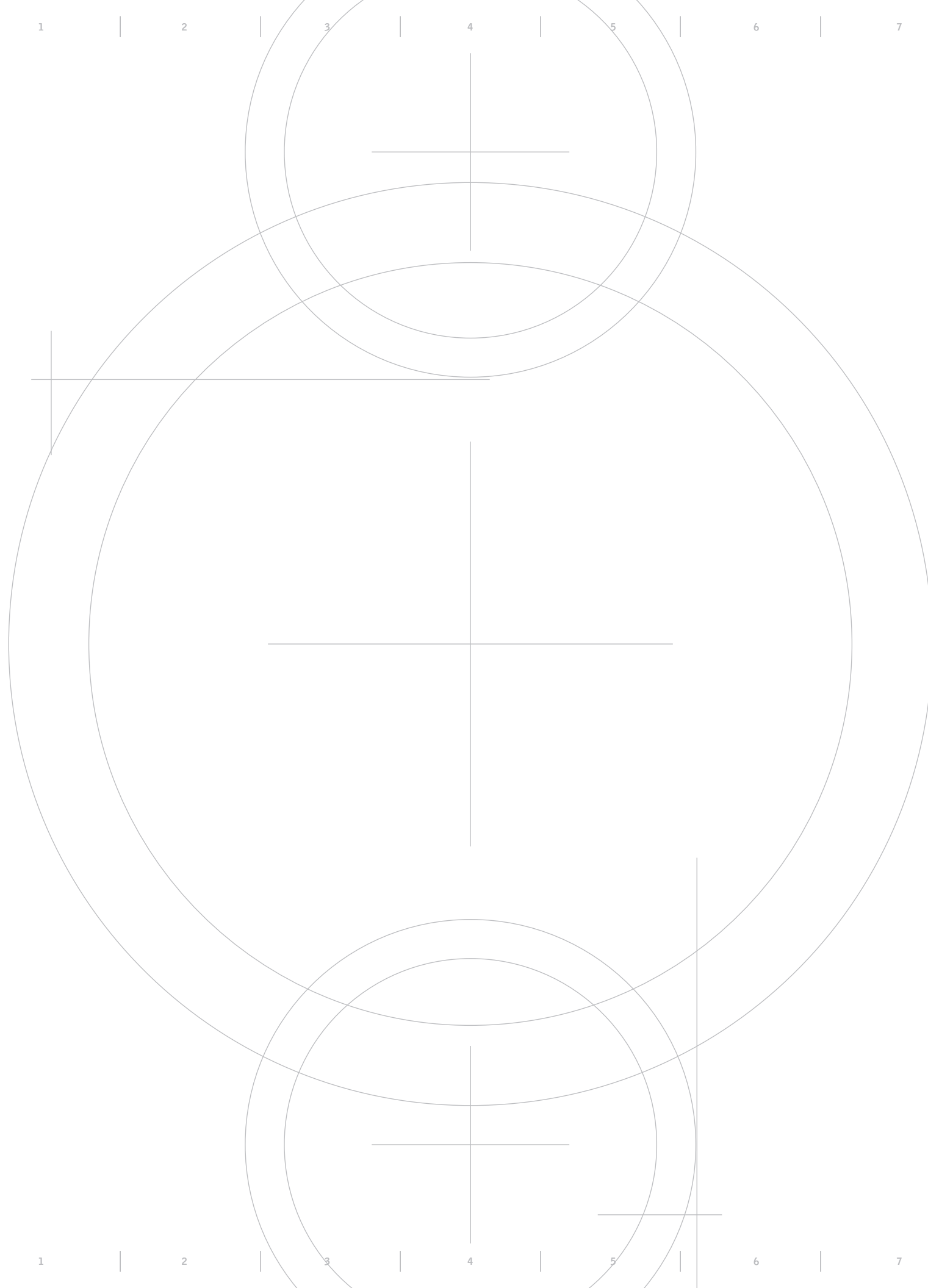
- + Shatterproof mirrors are made from prepolished 304 stainless steel sheets
- + Various options available: frameless, framed, etched, wall-to-wall applications
- + Mount with flathead pin-in Torx® security screws or adhesive
- + Appropriate for low, medium and high-risk environments

LIGATURE RESISTANT GRAB BARS

- + Grab bars are suitable for bathroom settings or wherever patients may need extra assistance throughout the room
- + Available in different finishes to match design aesthetics of the room



Please visit
www accuratelockandhardware.com
 to see all of our ligature resistant products and technical information.





CONTACT



ACCURATE LOCK & HARDWARE MANUFACTURERS OF LOCKS AND CUSTOM ARCHITECTURAL HARDWARE

1 Annie Place | Stamford, CT 06902

P: 203.348.8865

F: 203.348.5234

E: sales@accuratelockandhardware.com

www.accuratelockandhardware.com