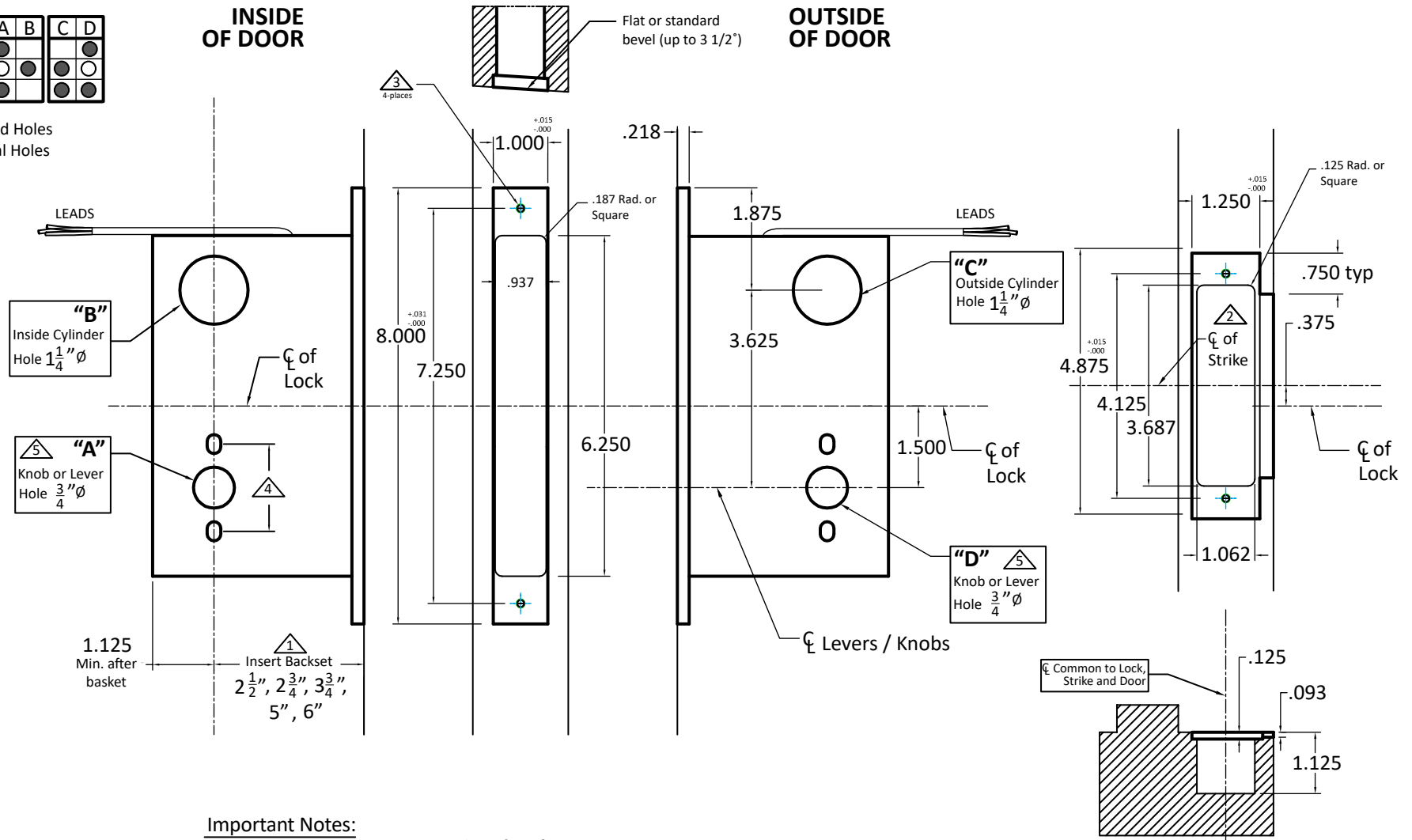


Functions	A	B	C	D
M9125ELR	●	○	○	○
M9158ELR	○	○	○	○
M9159ELR	○	○	○	○

- Required Holes
- Optional Holes



**Important Notes:**

- ① Insert backset here  $2\frac{1}{2}$ " ,  $2\frac{3}{4}$ " ,  $3\frac{3}{4}$ " , 5" , 6" .
- ② ASA strike mounted  $\frac{3}{8}$ " ABOVE centerline of lock.
- ③ Prep for #12 wood or 12-24 machine screws (lock and strike).
- ④ Through-bolting holes **ONLY** if required. See trim manufacturers' standard template for details.  
Accurate locks accommodate  $\frac{1}{2}$ " to  $1\frac{11}{16}$ " center to centers and up to  $\frac{1}{4}$ " dia. post.  
If there are any additional questions about through-bolting , please contact us.
- ⑤ Knob/Lever, Thumb Turn, and ER holes may vary from different trim manufacturers.  
Please refer to their templates to confirm dimensions.

**Additional Notes:**

- a) **Responsibility:** Door and frame manufacturers are responsible for providing adequate construction or re-inforcement for proper installation of hardware shown.
- b) Please contact us for double lipped template if needed.
- c) See spec sheets for additional lock details.



M9000ELR - Motor Drive Electrified Latch Retraction Mortise Lock

T-ALH.M9000ELR