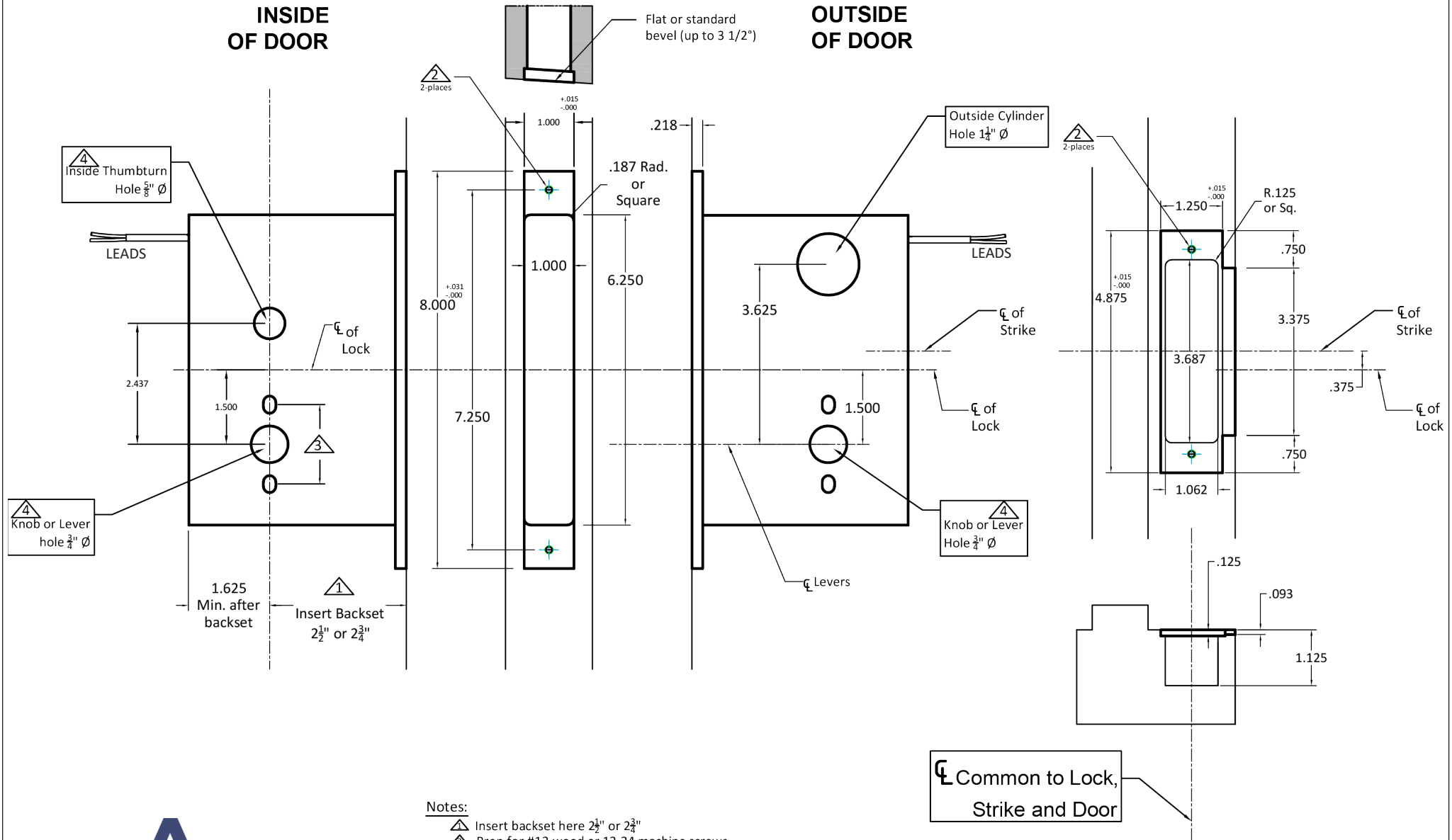


**OUTSIDE
OF DOOR**



- ⚠ Insert backset here $2\frac{1}{2}"$ or $2\frac{3}{4}"$
- ⚠ Prep for #12 wood or 12-24 machine screws
- ⚠ Thru bolting holes **ONLY** if required. See trim manufacturers standard template for details.
Accurate lock's accommodates $1\frac{1}{2}"$ to $1\frac{7}{8}"$ center to centers and up to $\frac{1}{4}"$ dia. post.
If there are any additional questions about the thru-bolting, please contact our office.
- ⚠ Knob / Lever / thumbturn holes may vary from different trim manufacturers. Please refer to their templates to confirm these dimensions.

- a) **Responsibility:** Door and frame manufacturers are responsible for providing adequate construction or re-inforcement for proper installation of hardware shown.
- b) Please contact us if a double lip strike is needed - for a proper template.
- c) See spec sheets for additional lock details.



M9034E - Motor Drive Electrified
Mortise Lock with Mechanical Deadbolt

T-ALH.M9034E | M9034E-DS