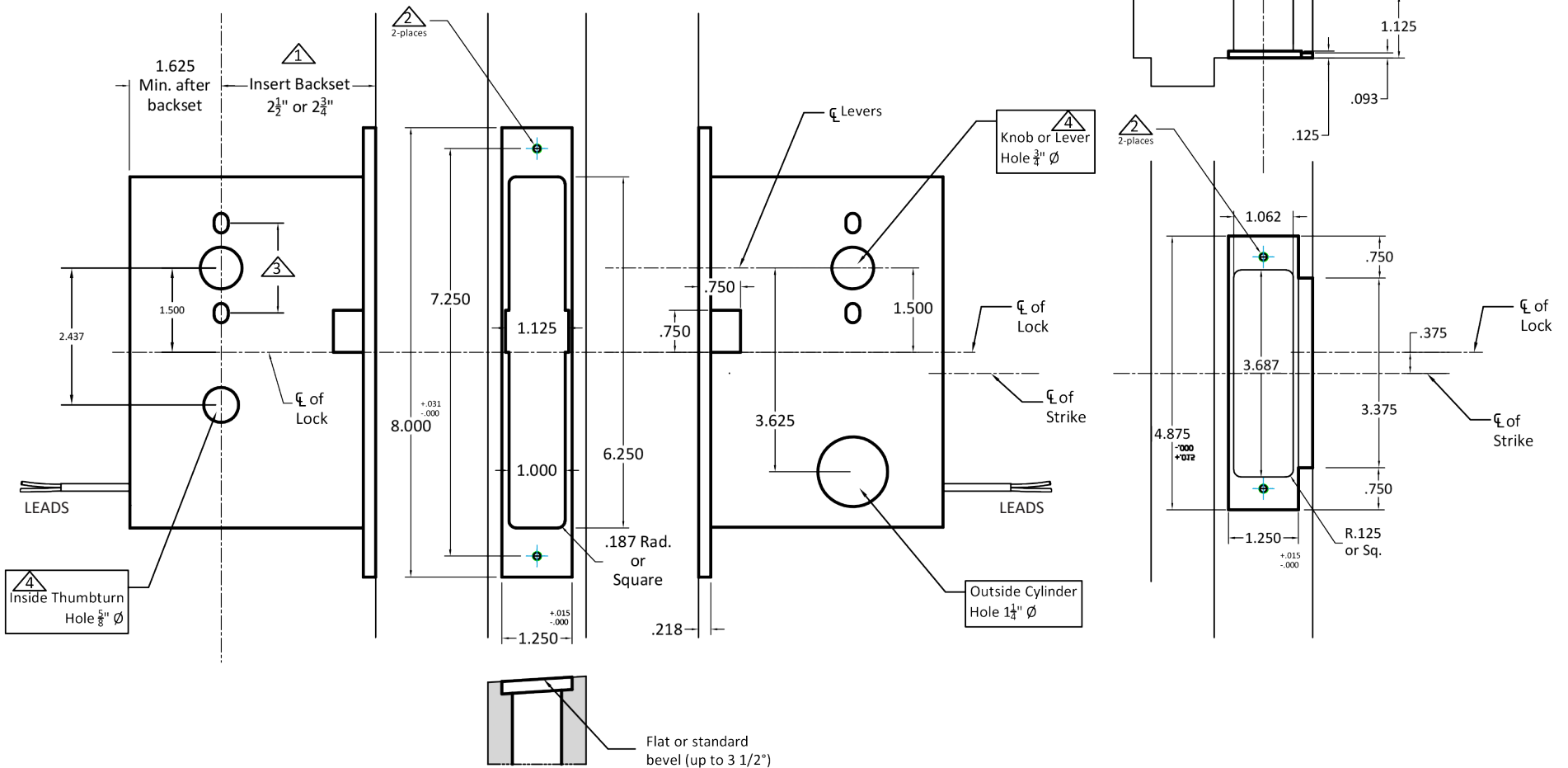


INSIDE OF DOOR

OUTSIDE OF DOOR

Common to Lock,
Strike and Door



Notes:

- 1 Insert backset here $2\frac{1}{2}"$ or $2\frac{3}{4}"$
- 2 Prep for #12 wood or 12-24 machine screws
- 3 Thru bolting holes **ONLY** if required. See trim manufacturers standard template for details. Accurate lock's accommodates $1\frac{1}{2}"$ to $1\frac{1}{4}"$ center to centers and up to $\frac{1}{4}"$ dia. post. If there are any additional questions about the thru-bolting, please contact our office.
- 4 Knob / Lever / thumbturn holes may vary from different trim manufacturers. Please refer to their templates to confirm these dimensions.

Additional Notes:

- a) **Responsibility:** Door and frame manufacturers are responsible for providing adequate construction or re-inforcement for proper installation of hardware shown.
- b) Please contact us if a double lip strike is needed - for a proper template.
- c) See spec sheets for additional lock details.

ACCURATE
LOCK & HARDWARE
AMERICAN CRAFTED SINCE 1972

M9134E.USD- Motor Drive Electrified
Mortise Lock with Mechanical Deadbolt

T-ALH.M9134E.USD | M9134E.USD-DS