



ACCURATE

LOCK & HARDWARE

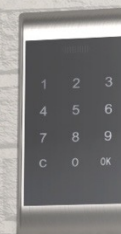
AMERICAN CRAFTED SINCE 1972

M9134E | M9167E

MOTOR DRIVE ELECTRIFIED MORTISE LOCK WITH MECHANICAL DEADBOLT



**M9134E MOTOR DRIVE ELECTRIFIED MORTISE LOCK
WITH DEADBOLT SHOWN WITH 19L LEVERS**



M9134E | M9167E
MOTOR DRIVE ELECTRIFIED
MORTISE LOCK WITH
MECHANICAL DEADBOLT

Flexible access control mortise locks with added deadbolt offering an additional layer of security, featuring single-action egress.

Perfect for use with highly decorative trim.

Universal voltage (accepts between 11V – 30V).

State-of-the-art monitoring functions.

Motor Drive Electrified Mortise Benefits

IMPROVED FLEXIBILITY

- Universal output voltage (accepts between 11V – 30V, versus solenoid versions that are 12V, 24V, VAC, and VDC specific)
- Can easily be changed from FAIL SECURE to FAIL SAFE to adapt to design variations

MORE FUNCTIONALITY

- State-of-the-art monitor functions starting at a 2-1/2" backset include: **AE** (Authorized Egress/Request to Exit – *M9134E Only*), **AM** (Dead Latch Monitoring – *M9134E Only*), **LB** (Locking Bar Monitor), **DM** (Deadbolt Monitor), **DS** (Deadbolt Secure Monitoring)

LONGER LIFE

- Adaptable to new technology

SAVE POWER, SAVE MONEY

- A motor drive lock costs significantly less per year to operate at \$0.25, compared to a solenoid lock that costs \$8.33*

STAY COOL

- Low current draw produces minimal heat eliminated “hot levers”

BE GREEN

- Low power requirement is ideal for environmentally friendly access control systems

IN GOOD COMPANY

- The same motor functionality is used by other trusted manufacturers including: Schlage, Sargent, Corbin Russwin, Hager, etc.



M9134E | M9167E Technical Details



M9134E

M9167E

UL Listed 3 Hour (Mechanics R13846/R27504 and Electronics R10121)
Grade 1 Certified to ANSI/BHMA A156.13.2005 Standard**

BACKSETS: 2 ½", 2 ¾" backset standard for door stiles 4 ½" or wider; larger backsets available as a special order

CASE: Heavy gauge, Plated Steel ($\frac{15}{16}$ " thick)

ARMOR FRONT: Adjustable bevel brass, bronze, or stainless steel (see all finish options pg. 12).

LATCH BOLT: Brass anti-friction type, $\frac{3}{4}$ " throw (solid latch bolt available as special order).

DEADBOLT: Brass with a hardened steel insert, 1" throw.

HUBS: Available in different sizes to be compatible with various trims.

THUMB TURN HUB: $\frac{3}{16}$ " (5mm) on the diamond. *Specialty 6mm square hub or 5mm square hub available as special order (contact our Sales Engineers for assistance).*

STRIKE: $4\frac{7}{8}$ " ASA

DUST BOX: Brass, stainless steel, or US10B

12-24V AC/DC (11V-30V Operating Range)

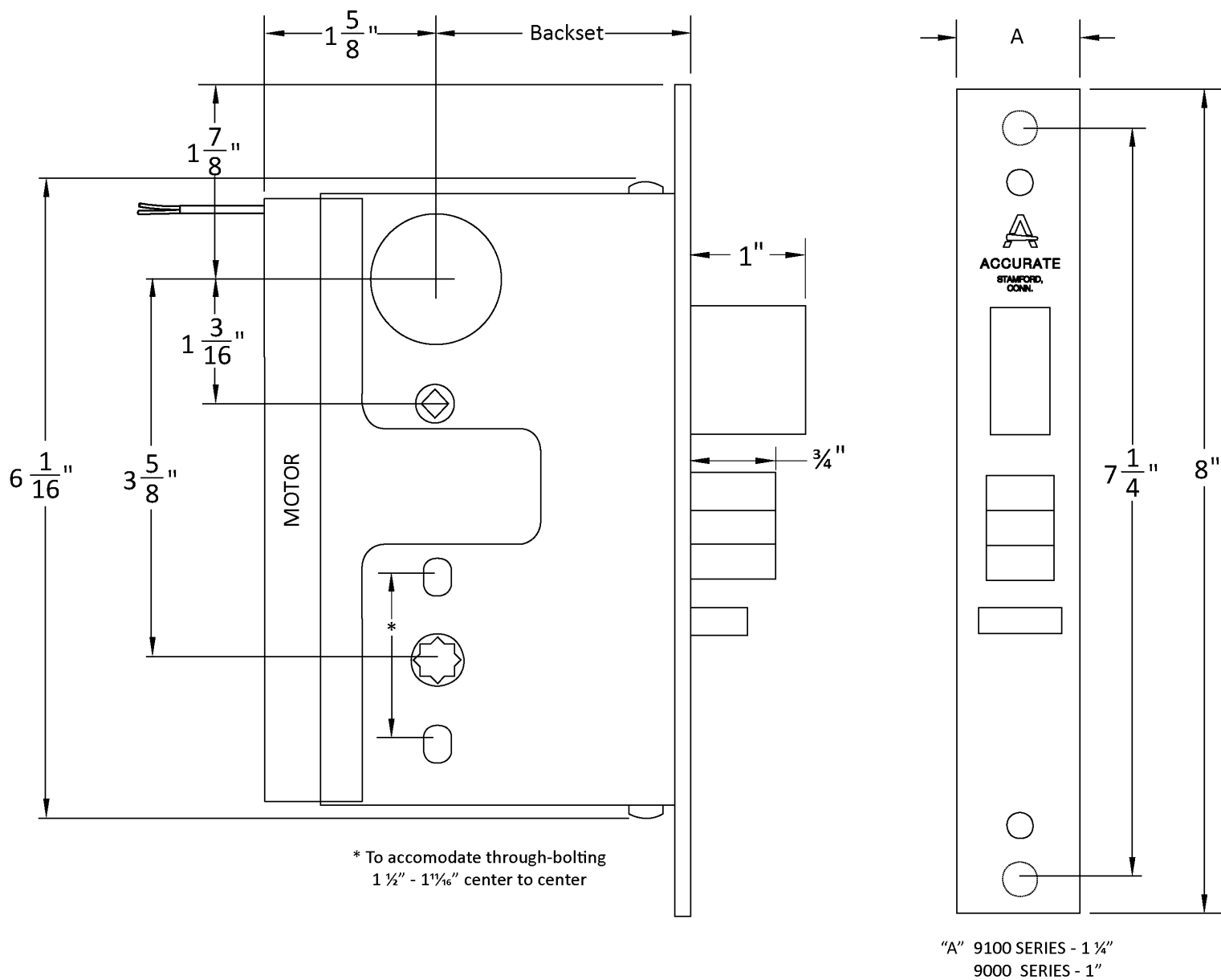
250mA MAX Inrush

10mA MAX Holding

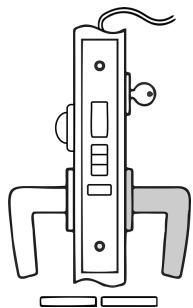
Non-polarized Leads

*** Locks are also available as High Security Detention Grade tested to ASTM F1577-05 Standard. Please specify SEC suffix (e.g. M9134E-SEC)*

M9134E Dimensions



M9134E Functions



M9034E for doors $1\frac{3}{8}$ minimum (1" armor front)

M9134E for doors $1\frac{3}{4}$ minimum ($1\frac{1}{4}$ " armor front)

Deadbolt is MANUALLY projected/retracted by key outside or thumb turn inside.

When electronically unlocked, outside lever will simultaneously retract latch and deadbolt.

Inside lever always free, retracting latch and deadbolt simultaneously.

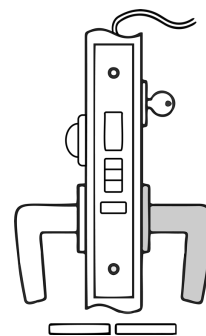
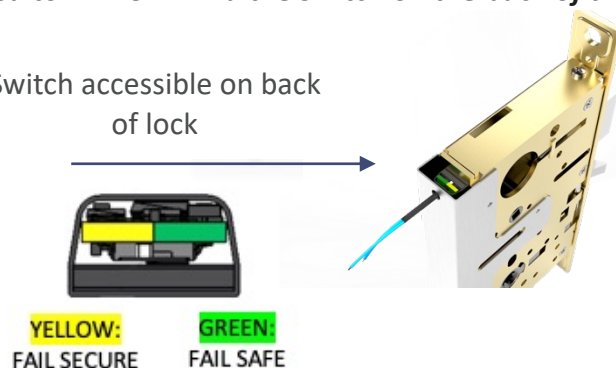
Auxiliary latch deadlocks latch bolt.

FAIL SECURE OPERATION*: Outside lever unlocked when power is applied and locked when power is removed. Lockset will lock in the event of power failure.

FAIL SAFE OPERATION: Outside lever locked when power is applied and unlocked when power is removed. Lockset will unlock in the event of power failure.

M9034E/M9134E Lock is furnished as FAIL SECURE and can be changed to FAIL SAFE via the switch on the back of the lock.

Switch accessible on back
of lock



M9034E-DS for doors $1\frac{3}{8}$ minimum (1" armor front)

M9134E-DS for doors $1\frac{3}{4}$ minimum ($1\frac{1}{4}$ " armor front)

Deadbolt is MANUALLY projected/retracted by key outside or thumb turn inside.

Electronic access depends on deadbolt position:

- ACCESS MODE: When DEADBOLT is RETRACTED and outside lever is electronically UNLOCKED, lever retracts latch allowing ingress.
- PRIVACY MODE: When DEADBOLT is PROJECTED, outside lever WILL NOT unlock via electronics, until deadbolt is retracted by key.

Inside lever always free, retracting latch and deadbolt simultaneously.

Auxiliary latch deadlocks latch bolt.

FAIL SECURE OPERATION*: Outside lever unlocked when power is applied and locked when power is removed. Lockset will lock in the event of power failure.

FAIL SAFE OPERATION: Outside lever locked when power is applied and unlocked when power is removed. Lockset will unlock in the event of power failure ONLY if deadbolt is not projected.

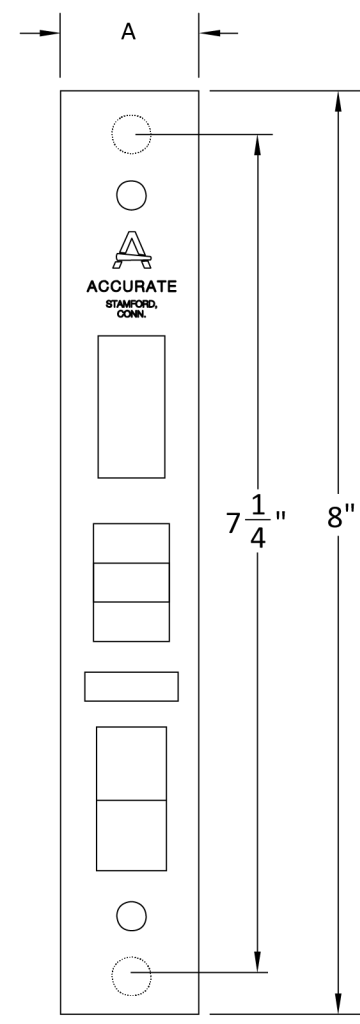
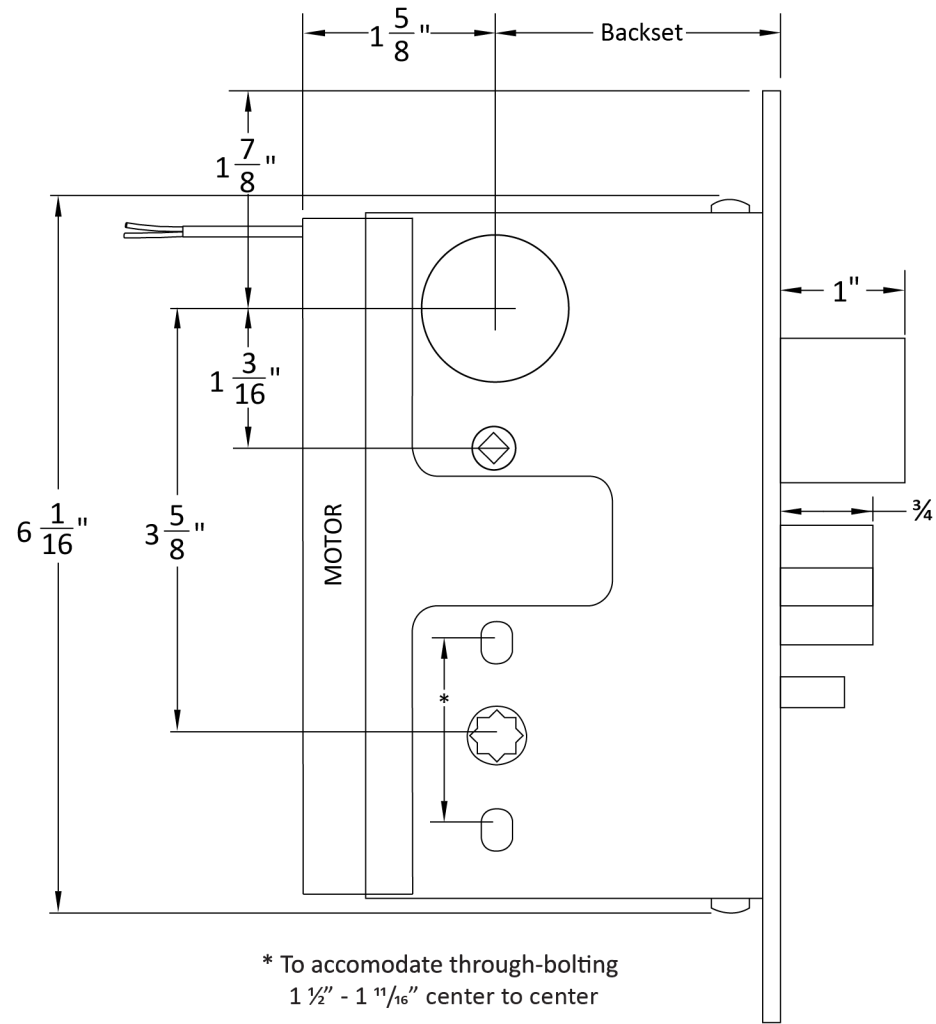
M9034E-DS/M9134E-DS Lock is furnished as FAIL SECURE and can be changed to FAIL SAFE via the switch on the back of the lock.

AE, LB and DM monitors available on M9034E,
M9134E, M9034E-DS and M9134E-DS Locks.

OR

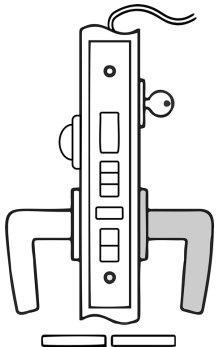
AM, LB and DM monitors available on M9034E,
M9134E, M9034E-DS and M9134E-DS Locks.

M9167E Dimensions



"A" 9100 SERIES - $1 \frac{1}{4}$ "
9000 SERIES - 1 "

M9167E Function



M9067E for doors $1\frac{3}{8}$ minimum (1" armor front)

M9167E for doors $1\frac{3}{4}$ minimum ($1\frac{1}{4}$ " armor front)

Toggle manually unlocks outside trim (deadbolt must be retracted).

No DS Deadbolt Security allows user to enter home via credential even if deadbolt is thrown.

NOTE: Remote re-locking is not available, user must reset toggle manually.

Throwing deadbolt will reset toggle back to locked mode.

Deadbolt is MANUALLY projected/retracted by key outside or thumb turn inside.

Auxiliary latch deadlocks latch bolt.

When electronically unlocked, outside lever will simultaneously retract latch and deadbolt.

If deadbolt is not projected, outside lever can be locked or unlocked with toggle.

For **passage mode**, toggle can be set to keep outside lever unlocked.

After unlocking lever with toggle, lever can only be re-locked by toggle or projecting the deadbolt, not by electronics.

Inside lever always free, retracting latch and deadbolt simultaneously.

After retracting deadbolt, outside lever remains locked until manually unlocked by toggle or electronically unlocked.

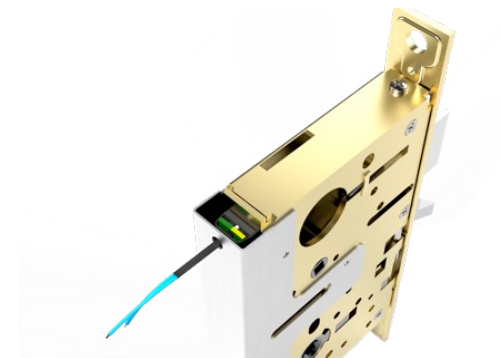
FAIL SECURE OPERATION*: Outside lever unlocked when power is applied and locked when power is removed.

Lockset will lock in the event of power failure.

FAIL SAFE OPERATION: Outside lever locked when power is applied and unlocked when power is removed.

Lockset will unlock in the event of power failure.

M9067E/M9167E Lock is furnished as FAIL SECURE and can be changed to FAIL SAFE via the switch on the back of the lock.



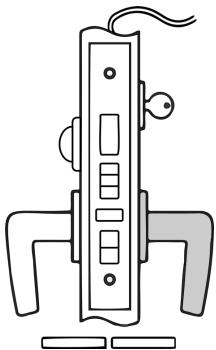
YELLOW:
FAIL SECURE

GREEN:
FAIL SAFE

Switch accessible on back
of lock

LB and DM monitors available on M9067E, M9167E Locks

M9167E-DS Functions



M9067E-DS for doors $1\frac{3}{8}$ minimum (1" armor front)

M9167E-DS for doors $1\frac{3}{4}$ minimum ($1\frac{1}{4}$ " armor front)

Electromechanical Deadbolt lock with **DS Deadbolt Security** for enhanced privacy and toggle action switch to **Passage Mode**.

Deadbolt is MANUALLY projected/retracted by key outside or thumb turn inside.

If deadbolt is not projected, outside lever can be locked or unlocked with toggle.

For **passage mode**, toggle can be set to keep outside lever unlocked.

After unlocking lever with toggle, lever can only be re-locked by toggle or projecting the deadbolt, not by electronics.

Inside lever always free, retracting latch and deadbolt simultaneously.

After retracting deadbolt, outside lever remains locked until manually unlocked by toggle or electronically unlocked.

Extending the deadbolt will reset the toggle to the locked position AND DISABLE ELECTRONIC CONTROL.

Auxiliary latch deadlocks latch bolt.

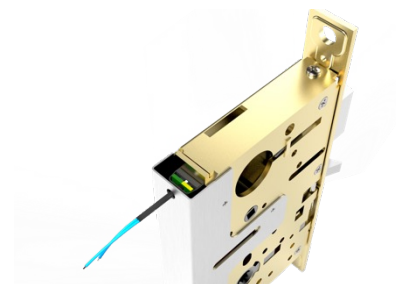
Electronic access depends on deadbolt position:

- When DEADBOLT is RETRACTED and outside lever is released via electronics, outside lever retracts latch allowing ingress
- When DEADBOLT is PROJECTED outside lever is NOT unlocked via electronics, a key will be needed for ingress

FAIL SECURE OPERATION*: Outside lever unlocked when power is applied and locked when power is removed. Lockset will lock in the event of power failure.

FAIL SAFE OPERATION: Outside lever locked when power is applied and unlocked when power is removed. *Lockset will unlock in the event of power failure ONLY if deadbolt is not projected.*

M9067E/M9167E Lock is furnished as FAIL SECURE and can be changed to FAIL SAFE via the switch on the back of the lock.



YELLOW:
FAIL SECURE

GREEN:
FAIL SAFE

Switch accessible on back
of lock

LB and DM monitors available on M9067E, M9167E Locks

Optional Monitoring Functions

AE - AUTHORIZED EGRESS

(Available only on M9034E, M9134E, M9034E-DS, and M9034E-DS Locks)

Also referred to as REQUEST TO EXIT (or REX switch), monitors the use of the INSIDE trim when the OUTSIDE trim is locked.

ELECTRICAL SPECIFICATIONS:

SPDT Mechanical switch

Voltage	Current
125 VAC	1 AMP
30 VDC	0.5 AMP

LB – LOCKING BAR MONITORING

(Available on M9034E, M9134E, M9034E-DS, M9034E-DS M9067E, M9167E Locks)

Monitors the position of the locking bar.

ELECTRICAL SPECIFICATIONS:

SPDT Mechanical switch

Voltage	Current
125 VAC	1 AMP
30 VDC	0.5 AMP

AM – DEAD LATCH MONITORING

(Available only on M9034E*, M9134E*, M9034E-DS*, and M9034E-DS* Locks.)

Monitors the position of the dead latch. To activate switch, the lockset must be in the closed position with the auxiliary latch depressed and main latch extended.

ELECTRICAL SPECIFICATIONS:

SPDT Mechanical switch

Voltage	Current
125 VAC	1 AMP
30 VDC	0.5 AMP

****NOT available on 2-1/2” backset locks)***

DM – DEADBOLT MONITOR

(Available on M9034E, M9134E, M9034E-DS, M9034E-DS, M9067E and M9167E Locks)

Monitors the full extension of the deadbolt.

ELECTRICAL SPECIFICATIONS:

SPDT Mechanical switch

Voltage	Current
125 VAC	1 AMP
30 VDC	0.5 AMP

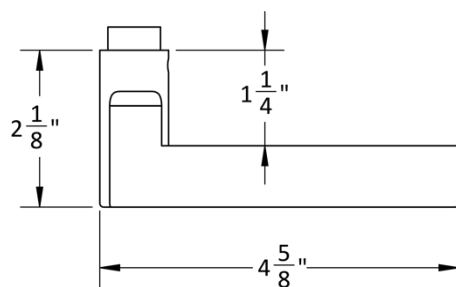
M9134E Allowable Monitoring Combinations Applies to: M9034E/M9134E All Backsets Standard and Upside Down (USD) Configurations				
AE Authorized Egress Inside Hub When Outside Locked	AM* Dead Latch Monitoring	LB Locking Bar Monitoring	DM Deadbolt Monitoring	DS Deadbolt Secure
X		X	X	X
	X	X	X	X

M9167E Allowable Monitoring Combinations Applies to: M9067E/M9167E All Backsets Standard and Upside Down (USD) Configurations		
LB Locking Bar Monitoring	DM Deadbolt Monitoring	DS Deadbolt Secure
X	X	X

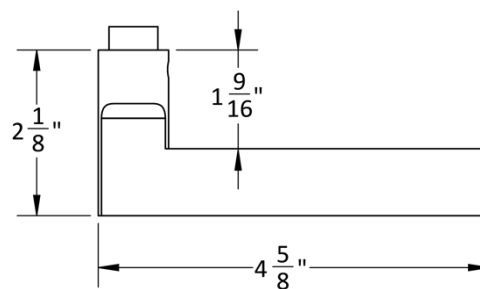
**NOT available on 2-1/2" backset locks)*

Accurate Lever Trim

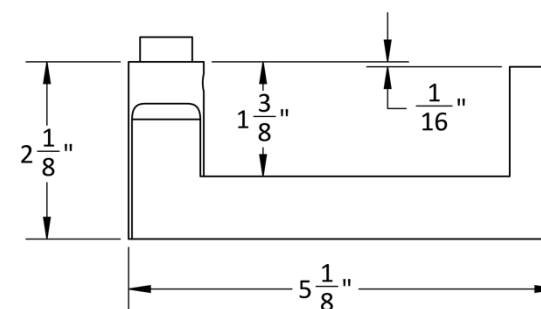
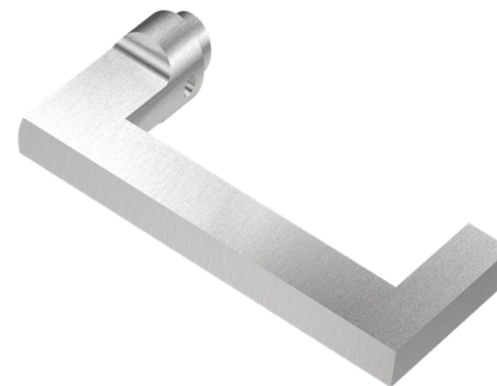
18L LEVER



19L LEVER

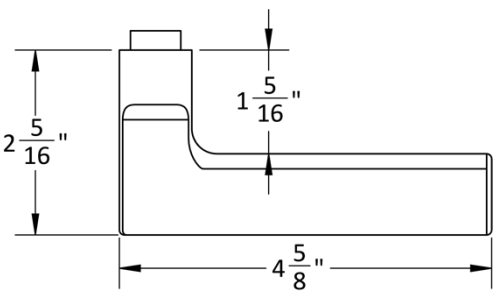


20L LEVER

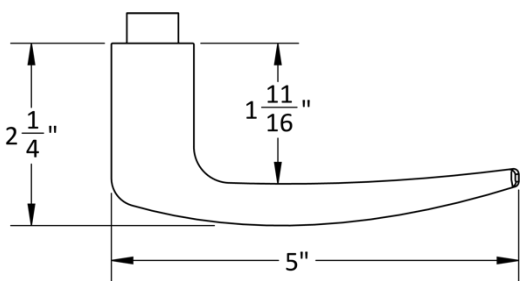


Accurate Lever Trim

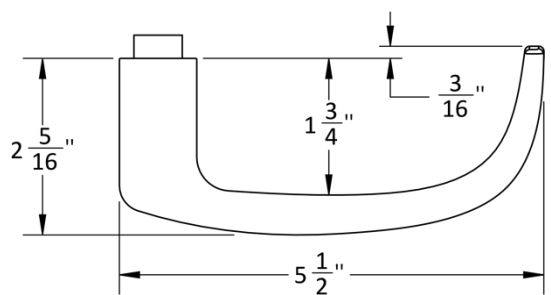
21L LEVER



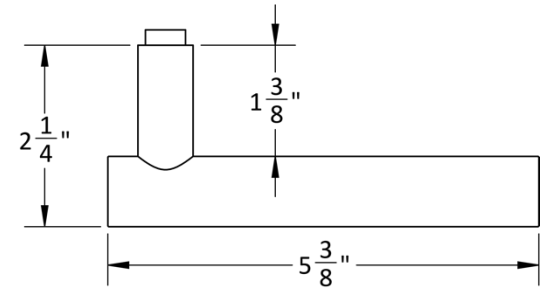
29L LEVER



39L LEVER



72L LEVER



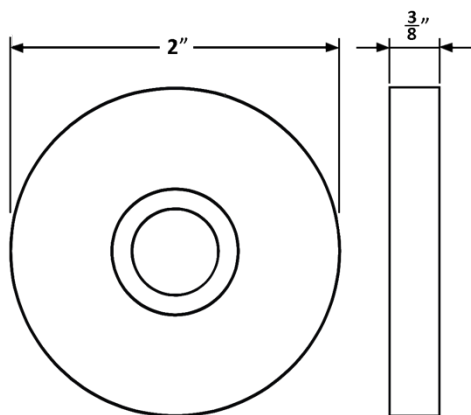
Accurate Trim Options: Roses

1R ROSE

Front



Side



SILENTPAC™ LEVER DAMPENING DISC CAN BE
SPECIFIED WITH THE 1R ROSE
VISIT SILENTPACSOLUTIONS.COM

2R ROSE

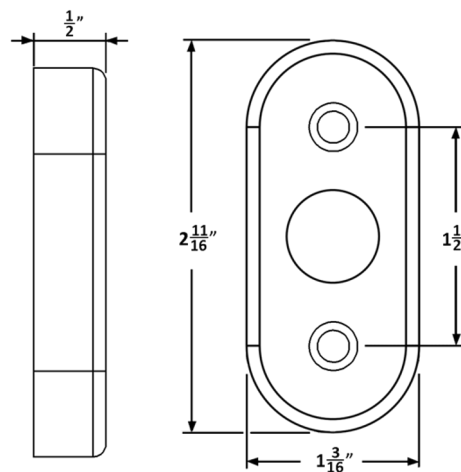
Side



Inside



Outside



4R ROSE

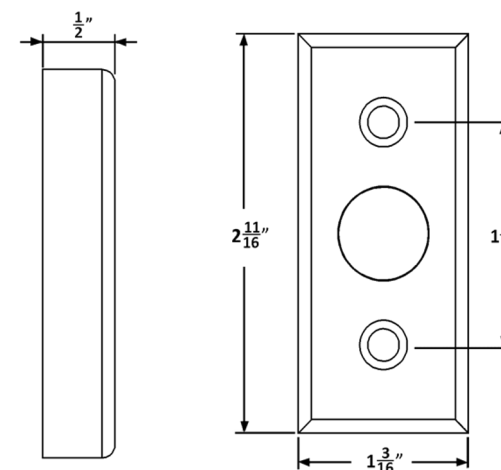
Side



Inside



Outside



Accurate Trim options: Accessories

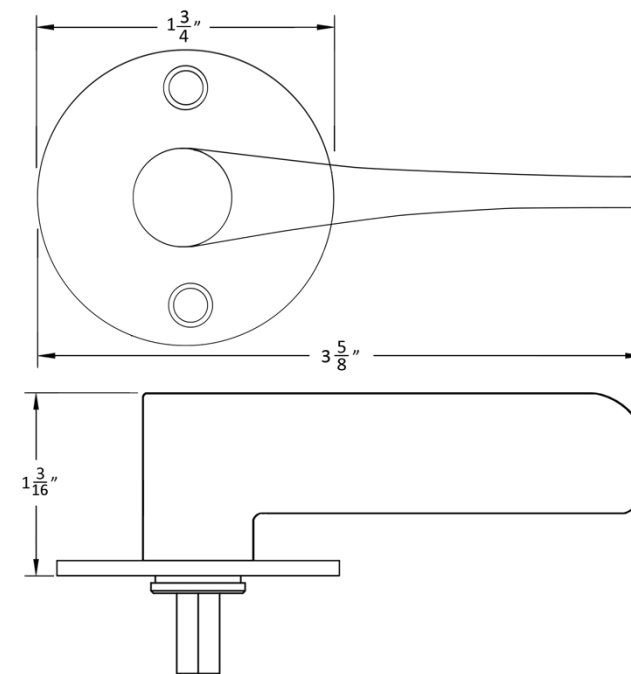
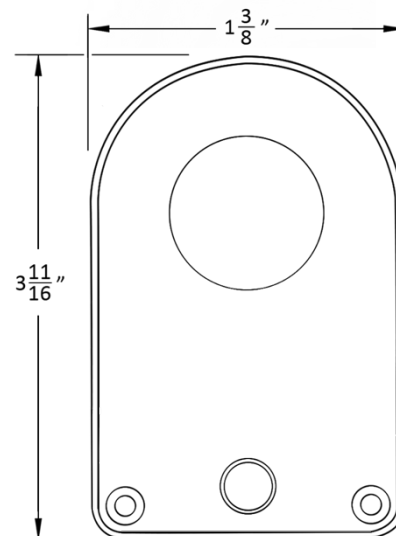
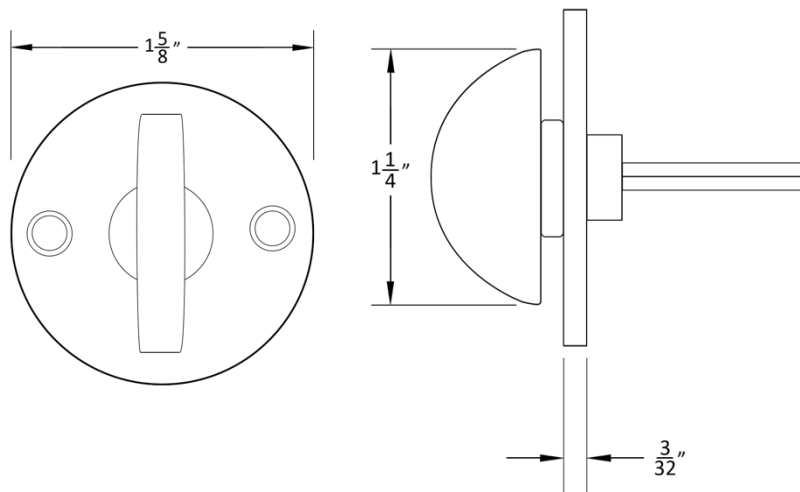
GF1106 Thumb Turn



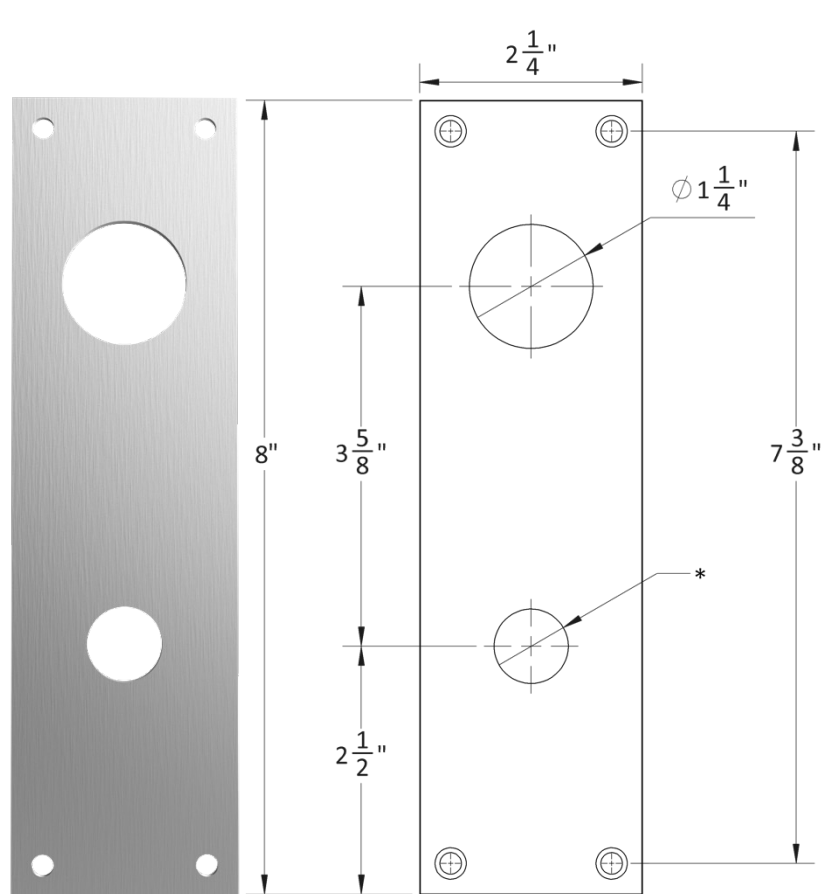
7200SCi Cylinder Indicator



7200ADA Thumb Turn

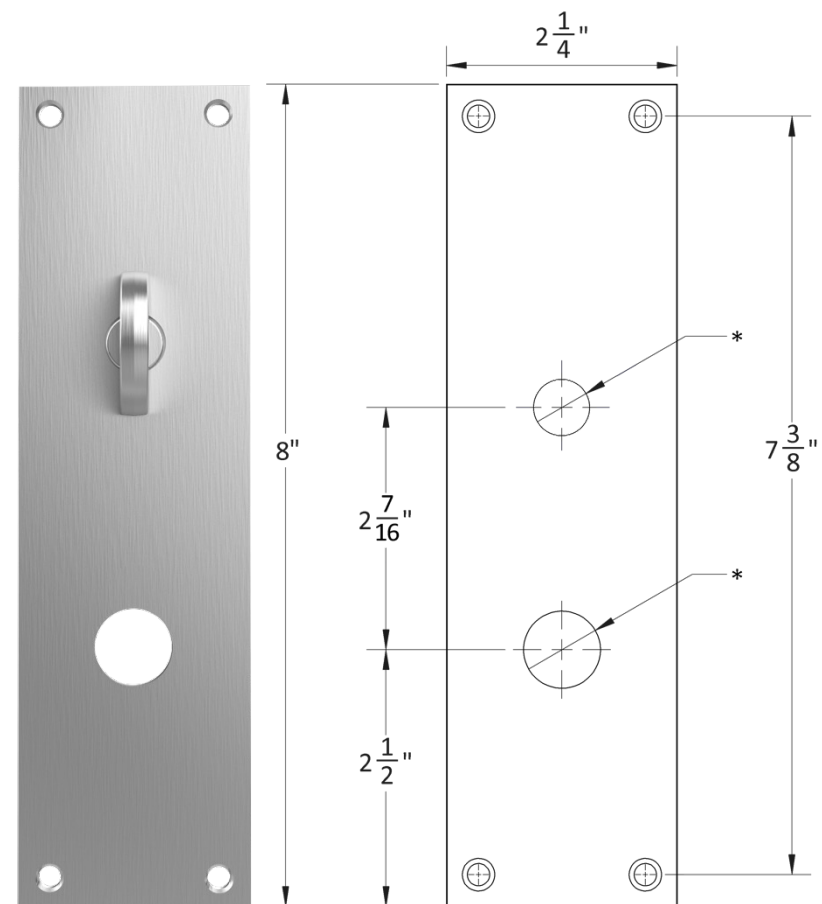


Accurate Trim Options: Escutcheons



1E-C

Cylinder
Cutout

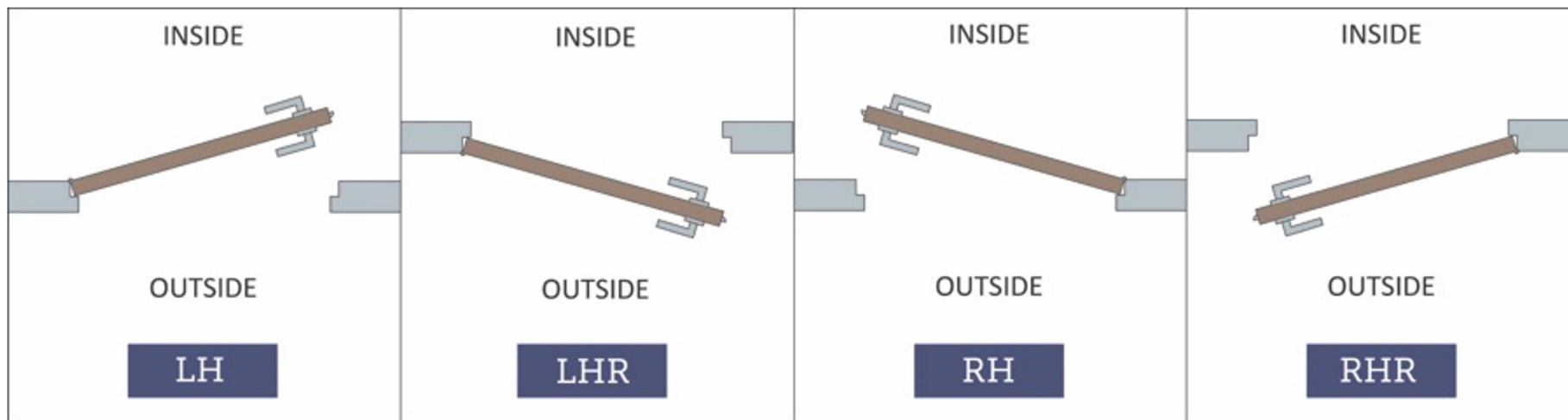


1E-T

Thumb Turn

HOW TO SPECIFY

HANDING



FINISHES

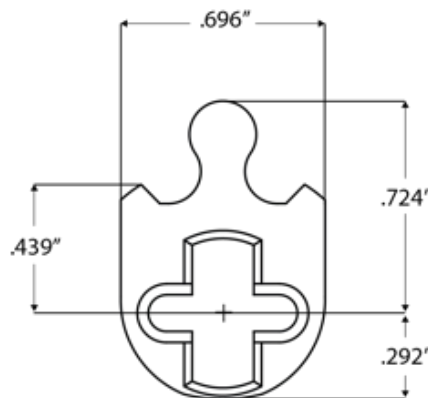
GROUP 1: US4, US4NL, US32D*, US26D

GROUP 2: US3, US3NL, US26, US32*, US9*, US10*, US10B, US14, US15, US19

GROUP 3: BN, BB, TN, TB, DURO, ESN, US15A, US5

* Trim options (including Accurate Levers) may not be available in US32D, US32, US9, or US10 finish. Please call for assistance.

To view example of finishes visit: [Accurate Finishes](#).



CYLINDERS & KEYING

M91XXE Series locks accept any standard American mortise cylinder. For details on required cams and compatibility with other manufacturers' cylinders, please visit: [Accurate Support](#).

HOW TO SPECIFY

FUNCTION-MONITOR.BACKSET.TRIM.FINISH.HAND.DOORTHICKNESS

FUNCTIONS

See available functions (pg. 6, 8-9)

BACKSET

2¹/₂", 2³/₄" standard
Other backsets available as
special order.

TRIM

Accurate trim (see pg. 12-16)
Specify other sectional trim manufacturers or
spindle size.

FINISHES

See available
finishes (pg. 17)

EXAMPLES

Electrified Lock for Entry Door to a Residence | Deadbolt Monitor | Accurate Trim

E.g.: M9167E-DM.212.29L/2R.US10B.RH.134

Electrified Lock for Office with Electronic Access All the Time | Deadbolt Monitor | Accurate Trim

E.g.: M9134E-DM.234.19L/1R.US26D.LH.134

Electrified Lock for Home Office | Other Manufacturers' Trim*

(Owner wants no electronic access when away: will lock door with key, throwing the deadbolt)

E.g.: M9134E-DS.212.8mm.US3NL.RH.214

SPECIAL OPTIONS AVAILABLE

- SS-Security Strikes
- USD K x K Upside Down (cylinder/thumb turn below knobs)
- USD L x L Upside Down (cylinder/thumb turn below levers)
- SLB Solid Latch Bolt (not available for SilentPac™ Quiet Lock)
- K x L Knob Outside, Lever Inside
- L x K Lever Outside, Knob Inside
- Compatible with the following add-ons: SilentPac™ Quiet Lock, SilentPac™ Lever Dampening Disc, High Security Solutions

**Note: For compatibility with other manufacturers' trim please call for assistance.*

**ACCURATE LOCK & HARDWARE
MANUFACTURERS OF LOCKS AND
CUSTOM ARCHITECTURAL HARDWARE**

1 Annie Place | Stamford, CT 06902

P: 203.348.8865

F: 203.348.5234

E: sales@accuratelockandhardware.com

www.accuratelockandhardware.com

**AMERICAN CRAFTED
— SINCE 1972 —**