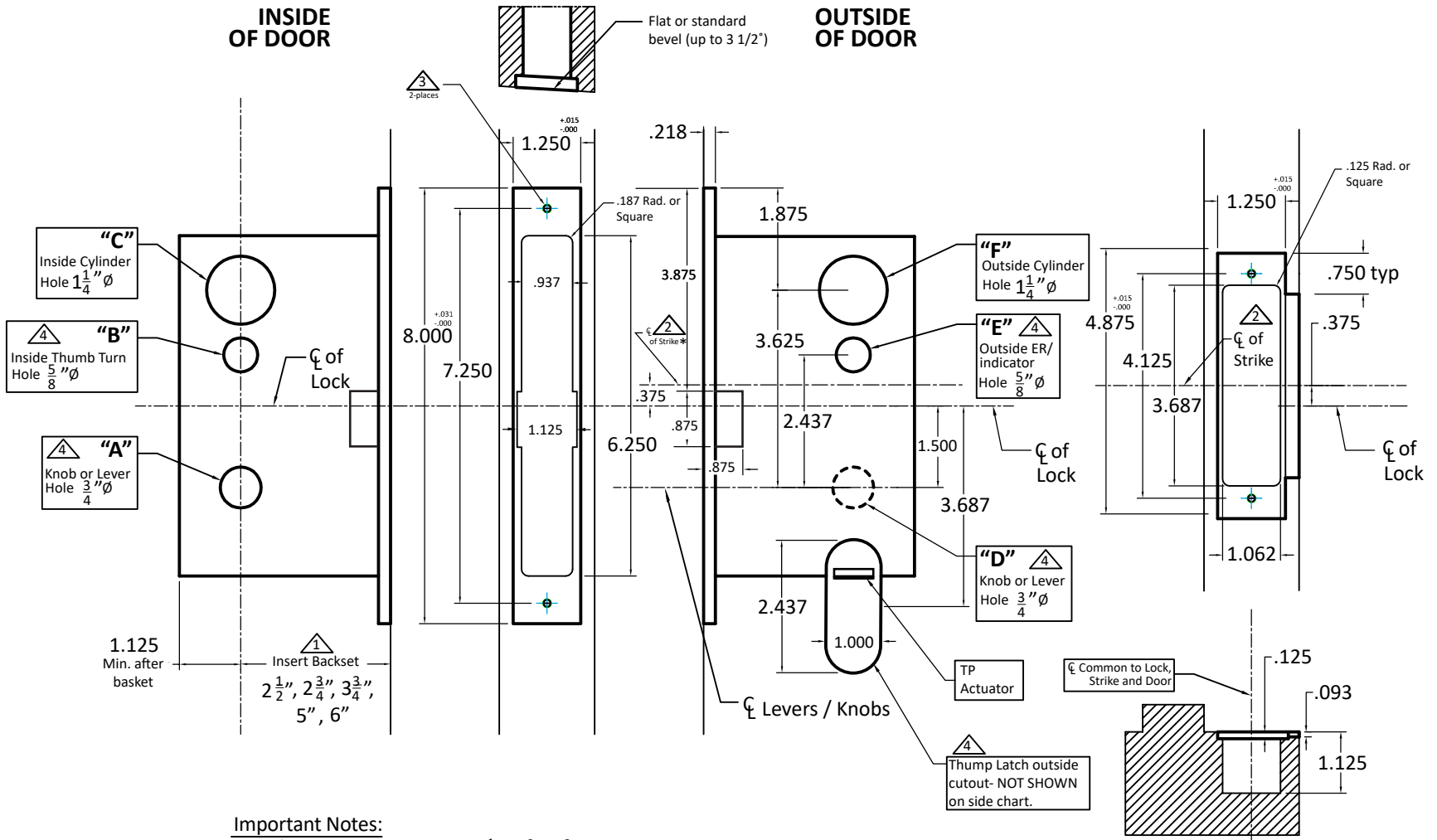


| Functions | A | B | C | E | F |
|-----------|---|---|---|---|---|
| 9122 | ● | | ● | ● | ● |
| 9124 | ● | ● | | ● | ● |
| 9125 | ● | | | ● | ● |
| 9134 | ● | ● | | ○ | ● |
| 9139 | ● | ● | | ○ | ● |
| 9142 | ● | | ● | ● | ● |
| 9143 | ● | | | ● | ● |
| 9143E | ● | | | ● | ● |
| 9144 | ● | ● | | ● | ● |
| 9144E | ● | ● | | ● | ● |
| 9145 | ● | | | ● | ● |
| 9145S | ● | | ● | ● | ● |
| 9146 | ● | | ● | ● | ● |
| 9148 | ● | ● | | ● | ● |
| 9149 | ● | ● | | ● | ● |
| 9153 | ● | | | ● | ● |
| 9156 | ● | | | ● | ● |
| 9158 | ○ | | | ● | ● |
| 9159 | ○ | | | ● | ● |
| 9160 | ○ | | | ● | ● |
| 9167 | ● | ● | | ● | ● |
| 9169 | ● | ● | | ● | ● |

● Required Holes
○ Optional Holes



Important Notes:

- ① Insert backset here 2 1/2", 2 3/4", 3 3/4", 5", 6".
- ② ASA strike mounted 3/8" ABOVE centerline of lock.
- ③ Prep for #12 wood or 12-24 machine screws (Lock and Strike.)
- ④ Knob, outside Thumb Latch, Thumb Turn, and ER holes may vary from different trim manufacturers. Please refer to their templates to confirm dimensions. THE OUTSIDE KNOB HOLE MAY NOT BE NEEDED- THIS FULLY DEPENDS ON THE SPINDLE ARRANGEMENT OF THE TRIM MANUFACTURER BEING USED.

Additional Notes:

- a) **Responsibility:** Door and frame manufacturers are responsible for providing adequate construction or re-inforcement for proper installation of hardware shown.
- b) Please contact us for double lipped template if needed.
- c) See spec sheets for additional lock details.



Standard 9100 Thumb Latch x Lever
Thumb Latch x Knob- All Backsets

T-ALH.9100.TL