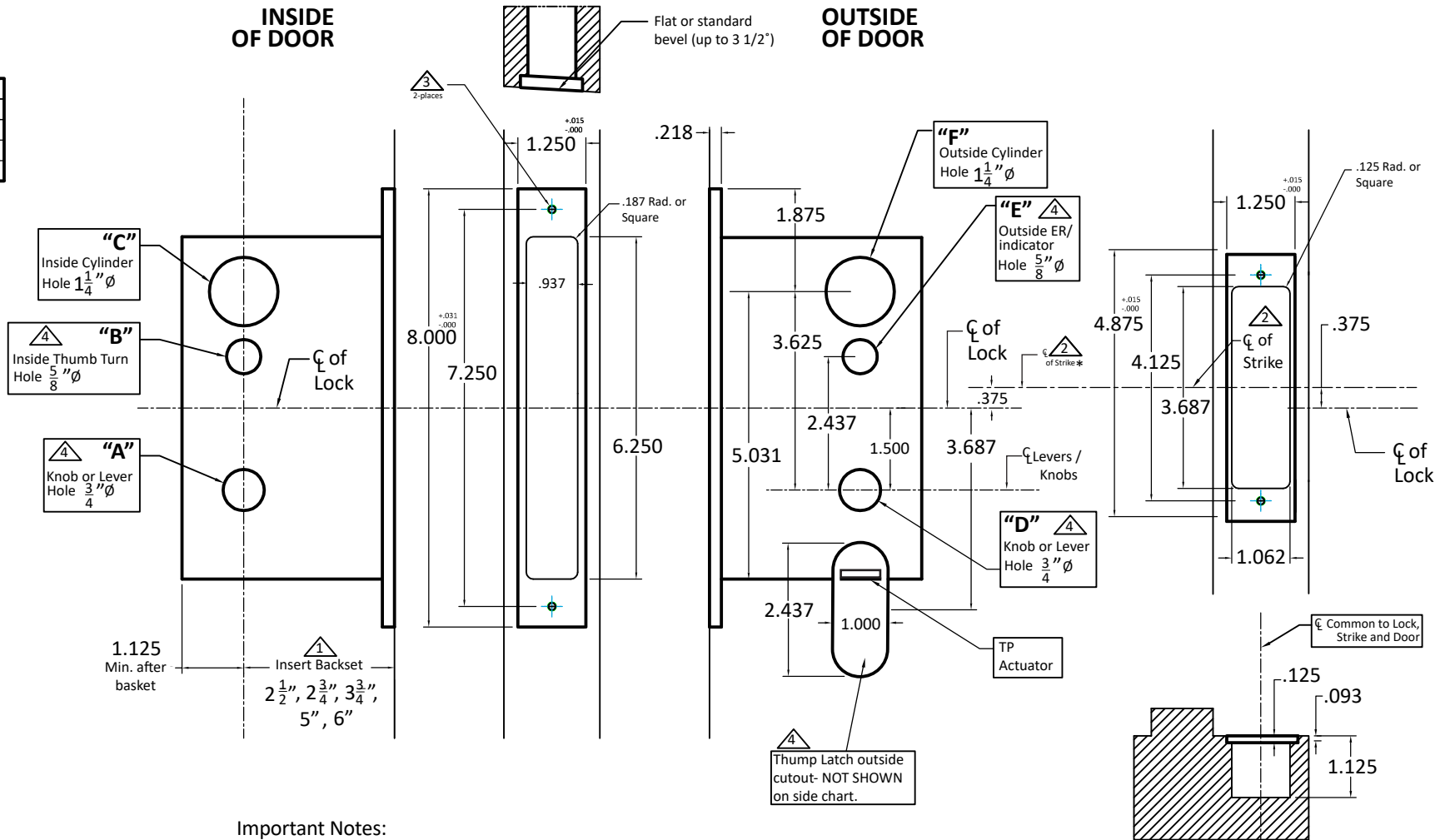


Functions	A	B	C	D	E	F
9122ML	●	●	●	○	○	○
9124ML	●	○	○	○	○	○
9125ML	●	○	○	○	○	○
9139ML	●	○	○	○	○	○

● Required Holes
○ Optional Holes



Important Notes:

- ⚠ Insert backset here $2\frac{1}{2}$ " , $2\frac{3}{4}$ " , $3\frac{3}{4}$ " , 5" , 6" .
- ⚠ ASA strike mounted $\frac{3}{8}$ " ABOVE centerline of lock.
- ⚠ Prep for #12 wood or 12-24 machine screws (Lock and Strike.)
- ⚠ Knob, outside Thumb Latch, Thumb Turn, and ER holes may vary from different trim manufacturers. Please refer to their templates to confirm dimensions. THE OUTSIDE KNOB HOLE MAY NOT BE NEEDED- THIS FULLY DEPENDS ON THE SPINDLE ARRANGEMENT OF THE TRIM MANUFACTURER BEING USED.

Additional Notes:

- a) **Responsibility:** Door and frame manufacturers are responsible for providing adequate construction or re-inforcement for proper installation of hardware shown.
- b) Please contact us for double lipped template if needed.
- c) See spec sheets for additional lock details.

