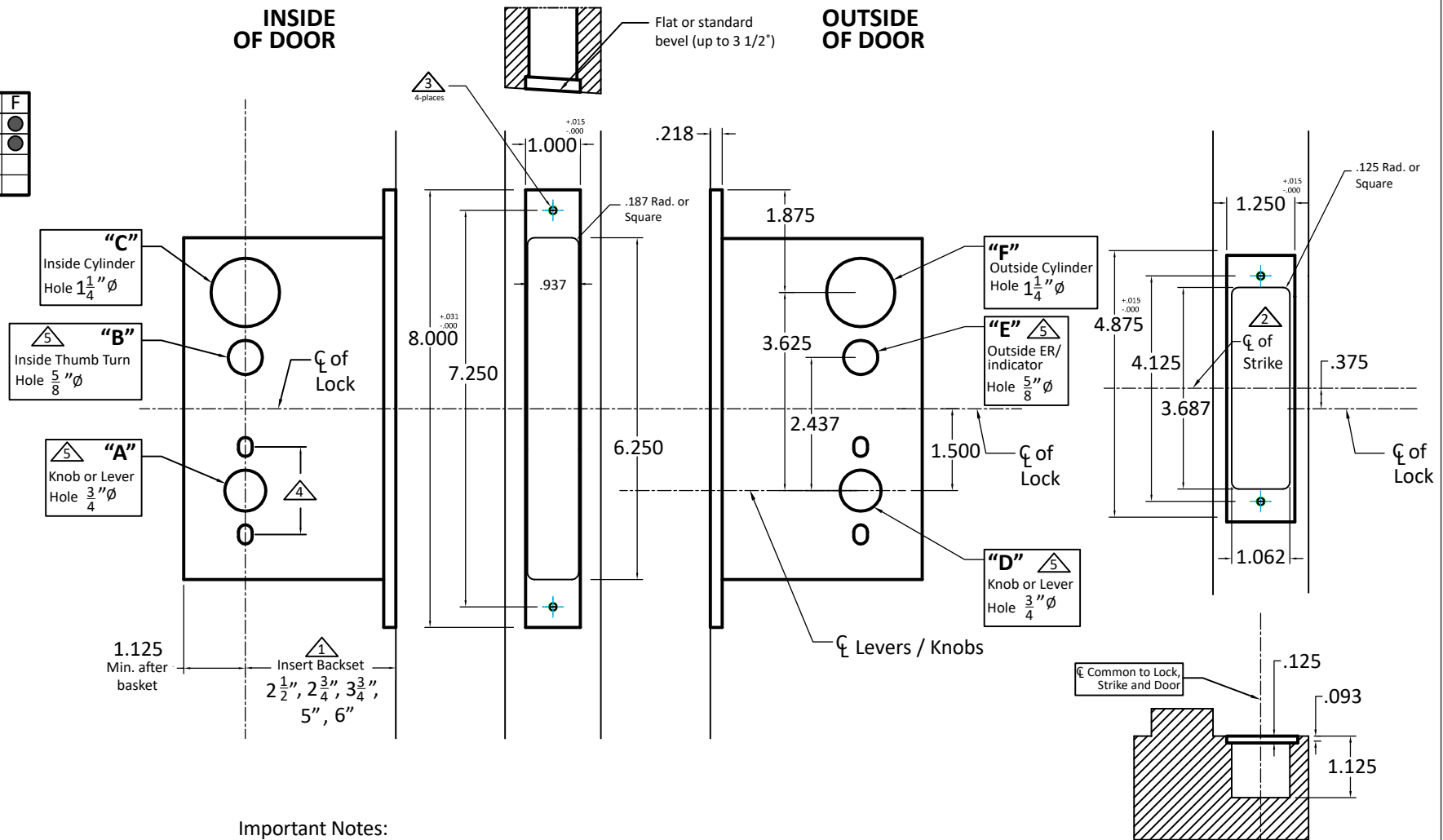


INSIDE OF DOOR

OUTSIDE OF DOOR

Functions	A	B	C	D	E	F
9022ML	●	●	●	●	●	●
9024ML	●	●	●	●	●	●
9025ML	●	●	●	●	●	●
9039ML	●	●	●	○	○	○

● Required Holes
○ Optional Holes



Important Notes:

- ▲ Insert backset here 2 1/2", 2 3/4", 3 3/4", 5", 6".
- ▲ ASA strike mounted 3/8" ABOVE centerline of lock.
- ▲ Prep for #12 wood or 12-24 machine screws (lock and strike).
- ▲ Through-bolting holes **ONLY** if required. See trim manufacturers' standard template for details. Accurate locks accommodate 1 1/2" to 1 11/16" center to centers and up to 1/4" dia. post. If there are any additional questions about through-bolting, please contact us.
- ▲ Knob/Lever, Thumb Turn, and ER holes may vary from different trim manufacturers. Please refer to their templates to confirm dimensions.

Additional Notes:

- a) **Responsibility:** Door and frame manufacturers are responsible for providing adequate construction or re-inforcement for proper installation of hardware shown.
- b) Please contact us for double lipped template if needed.
- c) See spec sheets for additional lock details.



ACCURATE
LOCK & HARDWARE
AMERICAN CRAFTED SINCE 1972

Standard 9000ML Magnetic Lever x
Lever or Knob x Knob - All Backsets

T-ALH.9000ML.LL