



# ACCURATE LOCK & HARDWARE

AMERICAN CRAFTED SINCE 1972

---

## G2002 SERIES

POCKET DOOR GLASS PATCH

# POCKET DOOR GLASS PATCH

## G2002 SERIES

The G2002 is a unique glass patch designed for space-saving pocket doors. Create open passages throughout living or office spaces that can easily be closed or locked while maintaining the desired aesthetic. The elegant patch kit features a recessed flush pull and thumb turn for privacy along with an integrated edge pull for ease of operation.



# G2002 Series

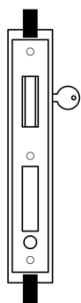
## POCKET DOOR GLASS PATCH

- Furnished with the industry standard 2002CPDL Pocket Door Lock with Integrated Edge Pull
- Offered as a complete package including lock body, thumb turn and patch assembly
- Standard set up is for 2" backset onto 1/2" thick tempered glass
- Custom options available including: other backsets, other door thicknesses, custom anodized aluminum finishes/colors
- Strikes sold separately.



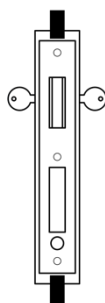
**G2002**

# G2002 Functions



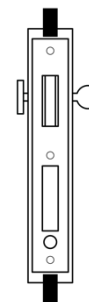
## **G2002-1 SINGLE CYLINDER**

By key outside only.



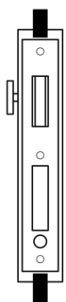
## **G2002-2 DOUBLE CYLINDER**

By key outside and inside.



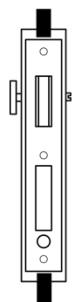
## **G2002-3 ENTRY**

By key outside and thumb turn inside.



## **G2002-4 PATIO**

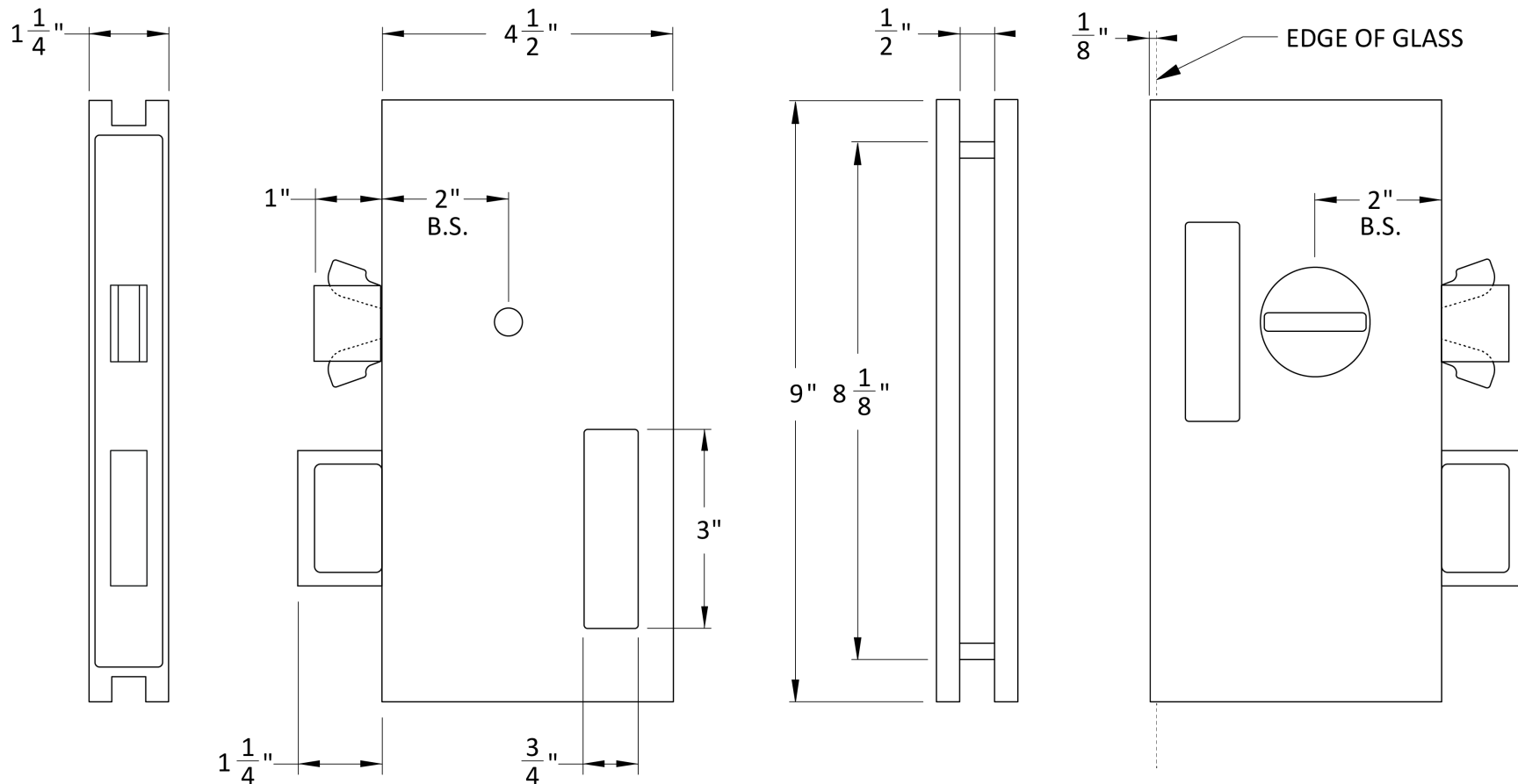
By thumb turn inside only.



## **G2002-5 PRIVACY**

By thumb turn inside, emergency release outside.

# G2002 Pocket Door Glass Patch Dimensions



# G2002-CPDS Glass Patch Strike

## FOR PAIR OF DOORS



**G2002-CPDS  
RETRACTED PULL**



**G2002-CPDS  
PROJECTED PULL**

*(specified and sold separately)*

# G2002-GPS Glass Patch Strike

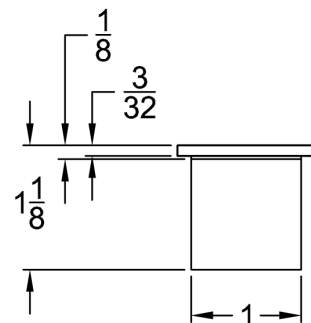
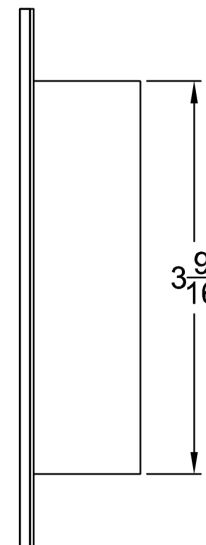
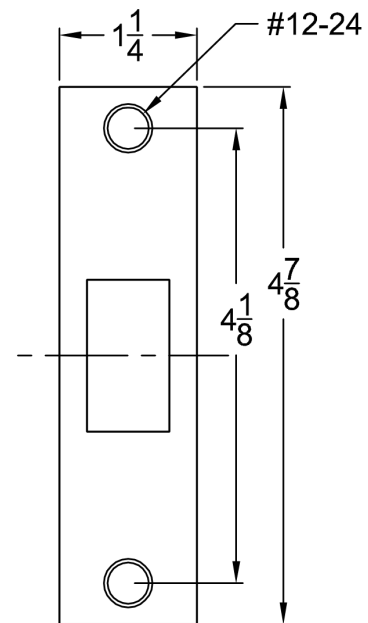
FOR SINGLE DOOR (CLOSING INTO PATCH)



**G2002-GPS**  
*(specified and sold separately)*

# Standard Strike

FOR USE WITH WOOD OR METAL DOOR JAMBS

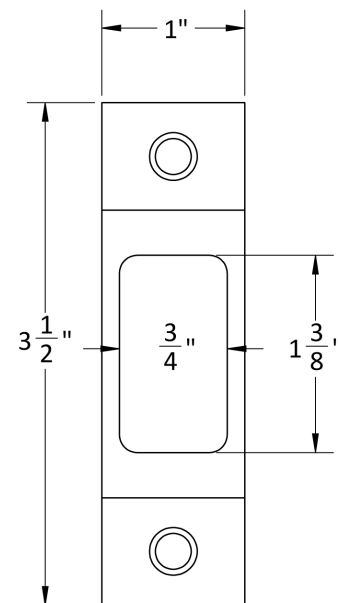
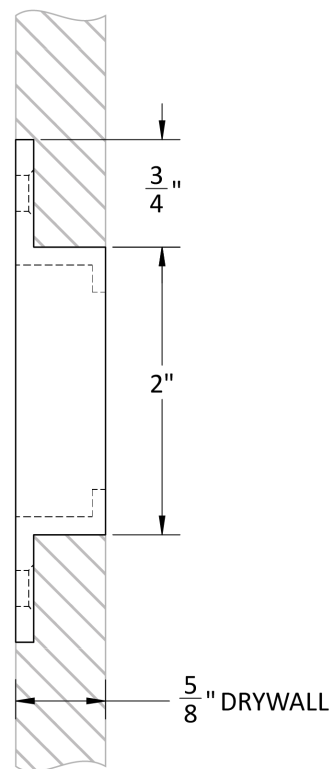


**STANDARD STRIKE**  
*(specified and sold separately)*



# G2002-DWSTK Drywall Strike

PAIR WITH G2002  
MOUNTS FLUSH TO THE DRYWALL



**G2002-DWSTK DRYWALL STRIKE**  
*(specified and sold separately)*

# G2002-DWSTK Drywall Strike

PAIR WITH G2002

MOUNTS FLUSH TO THE DRYWALL

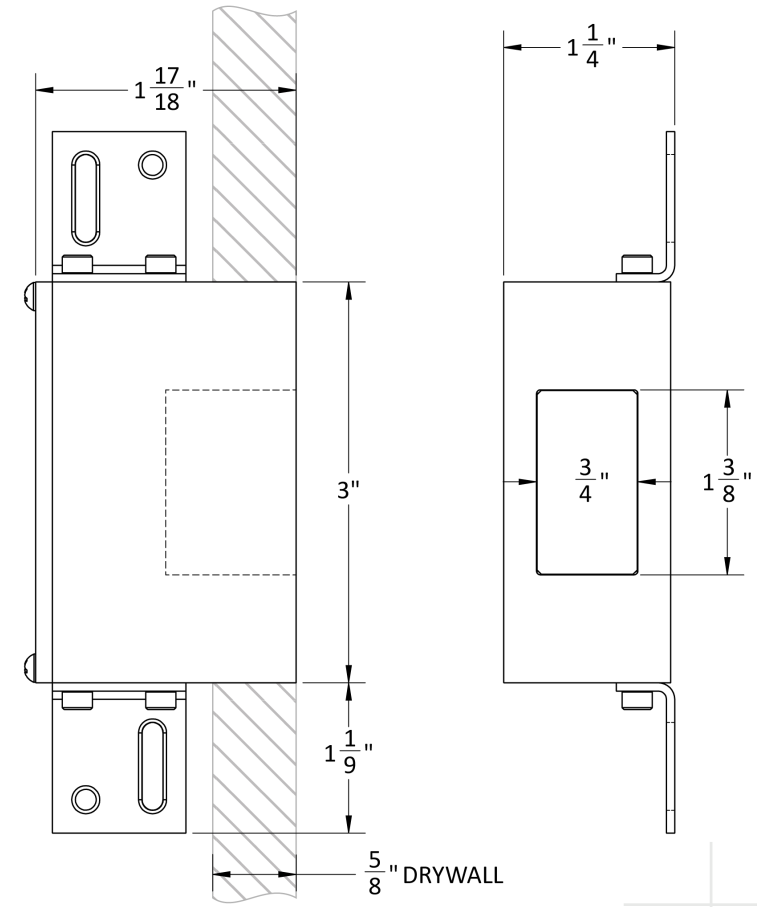


**G2002-DWSTK DRYWALL STRIKE**  
*(specified and sold separately)*

# G2002-DWSTK-DP Dust Proof Drywall Strike

PAIR WITH G2002

FOR USE WITH DRYWALL | INSTALLED ON STUD (PRIOR TO SHEETROCK)



**G2002-DWSTK-DP DUST PROOF DRYWALL STRIKE**  
*(specified and sold separately)*

# G2002-DWSTK-DP Dust Proof Drywall Strike

PAIR WITH G2002

FOR USE WITH DRYWALL | INSTALLED ON STUD (PRIOR TO SHEETROCK)

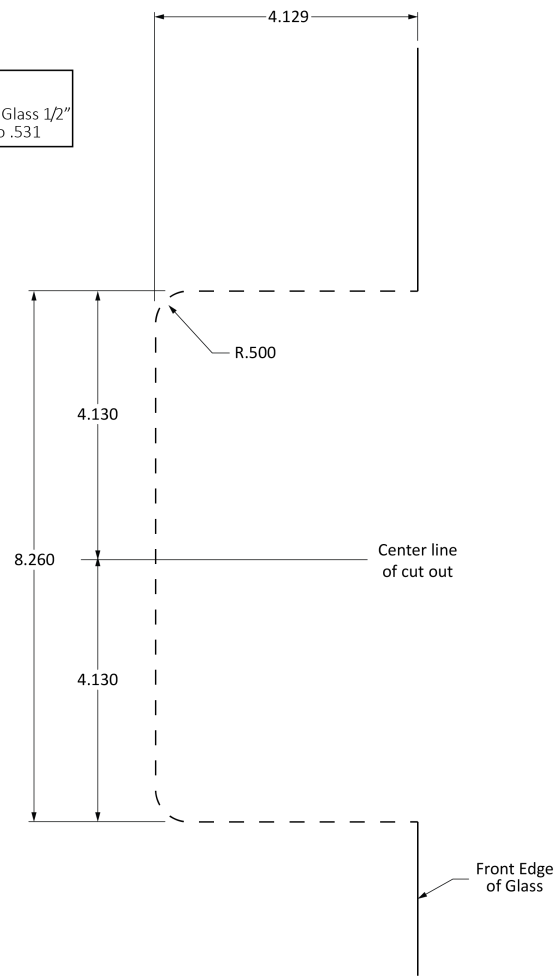


**G2002-DWSTK-DP DUST PROOF DRYWALL STRIKE**  
*(specified and sold separately)*

# G2002 Glass Prep Template

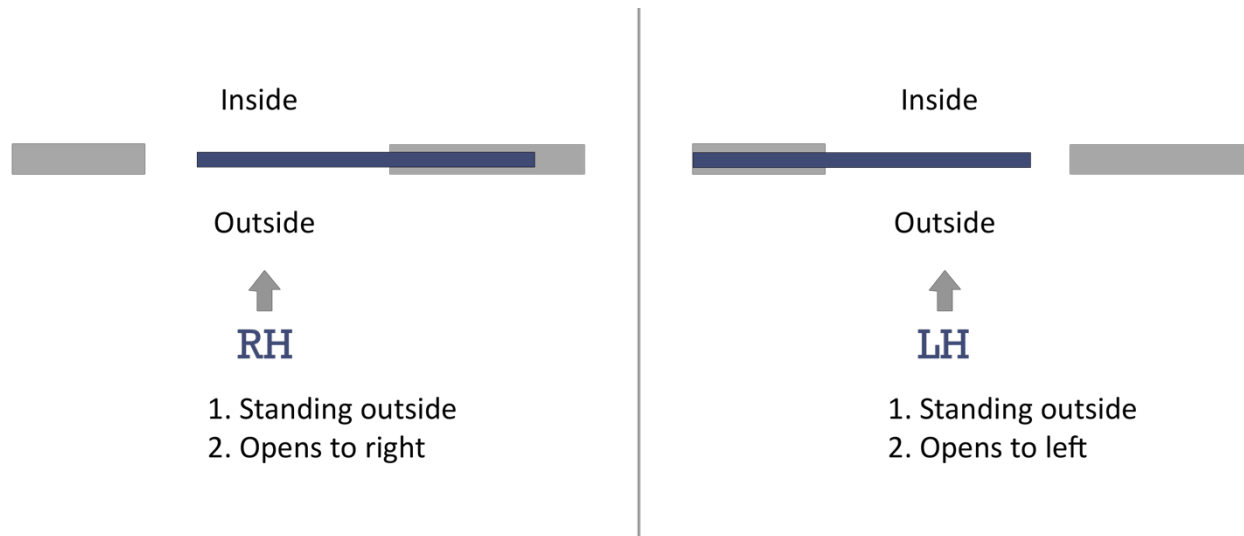


**Important Note:**  
Glass template for Glass 1/2"  
thick range: .469 to .531



# HOW TO SPECIFY

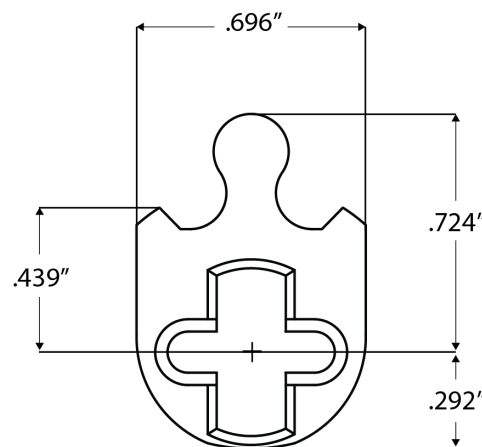
## HANDING



## FINISHES

US28, ESN, US19

Other finishes available, please [contact us](#) for assistance.

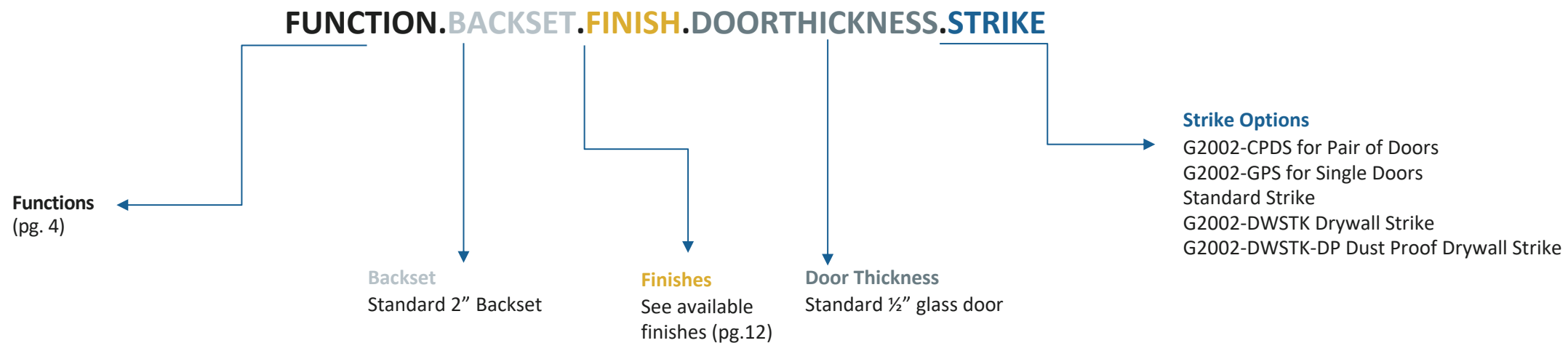


## CYLINDERS & KEYING

G2002 Series accepts any standard American mortise cylinder. For details on required cams and compatibility with other manufacturers' cylinders, please visit:

[Accurate Support](#)

# HOW TO SPECIFY



## EXAMPLES

Pocket Door Glass Patch | Entry | Pair of Doors

E.g. G2002-3.2.ESN.1/2.G2002-CPDS

Pocket Door Glass Patch | Privacy | Standard Strike

E.g. G2002-5.2.US19.1/2

Pocket Door Glass Patch | Single Cylinder | Dry Wall Strike

E.g. G2002-1.2.US28.1/2.G2002-DWSTK

## CUSTOM OPTIONS AVAILABLE

- Strikes specified and sold separately.

**ACCURATE LOCK & HARDWARE  
MANUFACTURERS OF LOCKS AND  
CUSTOM ARCHITECTURAL HARDWARE**

1 Annie Place | Stamford, CT 06902

**P:** 203.348.8865

**F:** 203.348.5234

**E:** sales@accuratelockandhardware.com

**www.accuratelockandhardware.com**



**AMERICAN CRAFTED  
— SINCE 1972 —**