



# ACCURATE LOCK & HARDWARE

AMERICAN CRAFTED SINCE 1972

---

## GR87 SERIES

RABBETED GLASS PATCH MORTISE SETS FOR OFFSET GLASS APPLICATIONS



# RABBETED GLASS PATCH KIT

## GR87 SERIES

This rabbeted glass patch hardware set features single action egress for code compliance and anti-friction latch for more reliable closing and operation. The GR87 offers more functionality and features to fit any design intent. The GR87 is offered as a complete package including lock body, patch assembly and levers, compatible with US mortise cylinders.

**GR8745 RABBETED GLASS PATCH WITH 18L LEVERS**

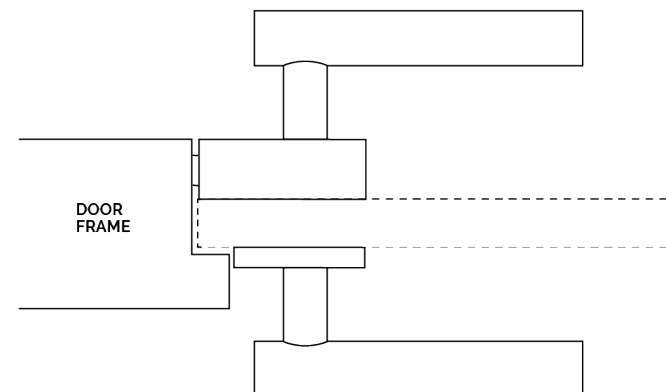
# GR87 Series

## RABBETED GLASS PATCH HARDWARE SETS

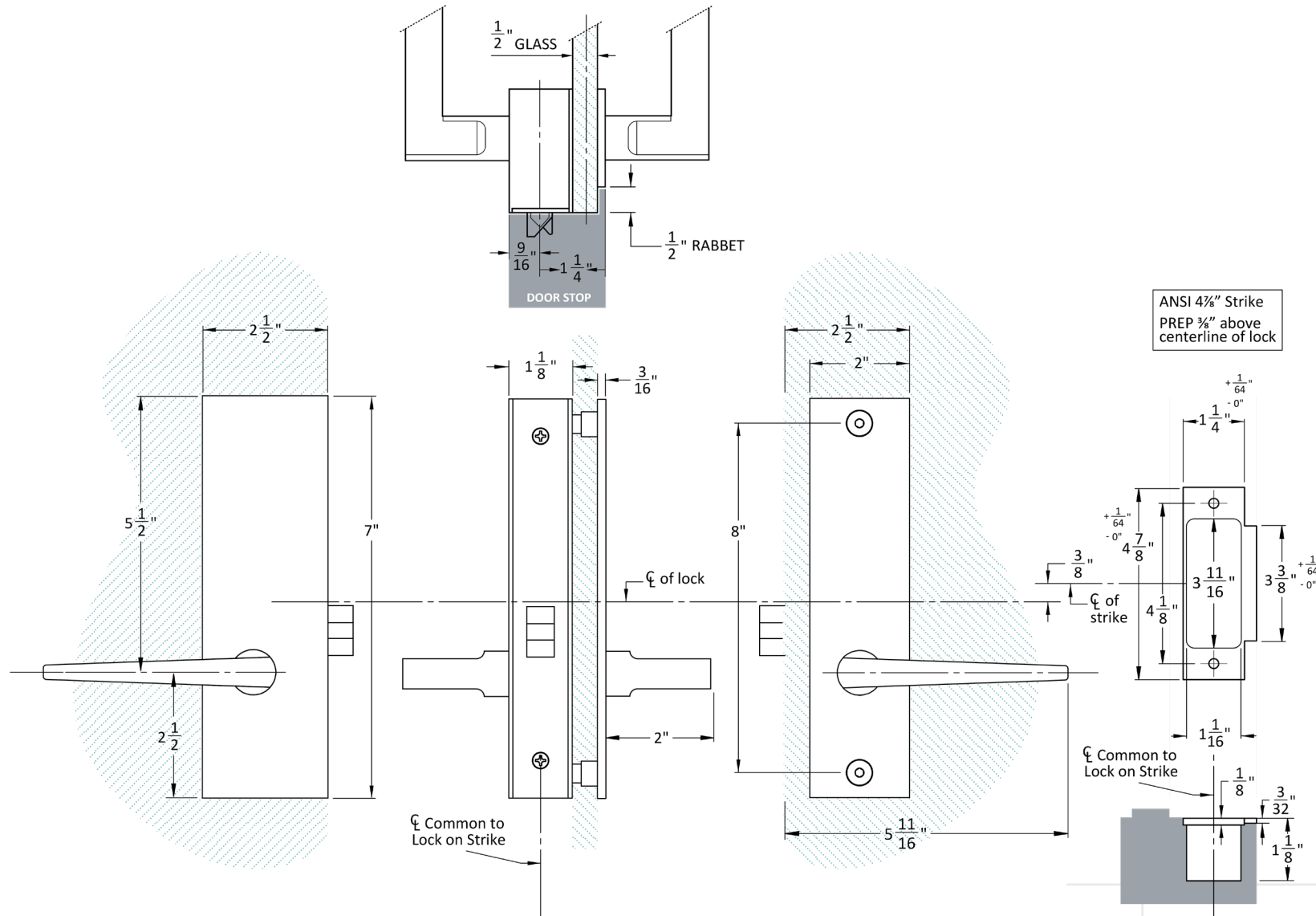
- Single action egress for code compliance
- Features a smoother, upgrade latch that results in more reliable closing, higher performance and overall better operation by reducing friction when it engages with the strike
- Offers more functionality than the GR86
- For inswing and outswing doors that utilize proprietary framing
- Standard set up is for a 1 1/2" backset lockset on 1/2" thick tempered glass



**GR87**  
Offset  
On Glass



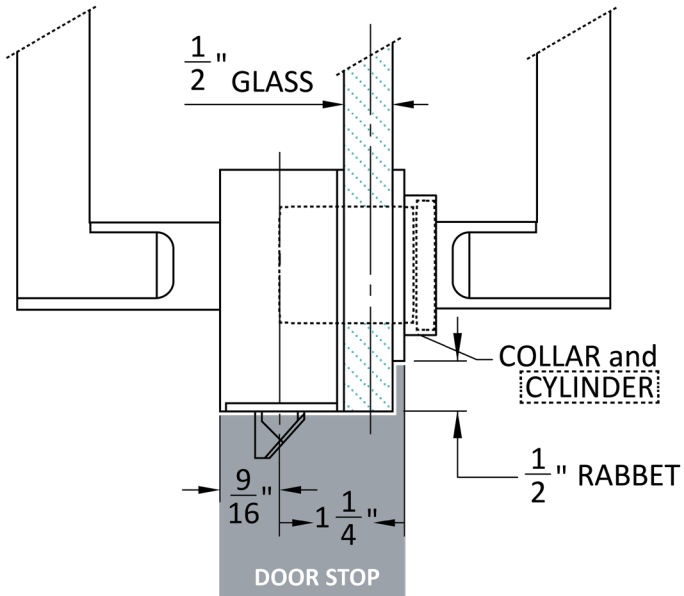
# GR87 Rabbeted Glass Patch Dimensions



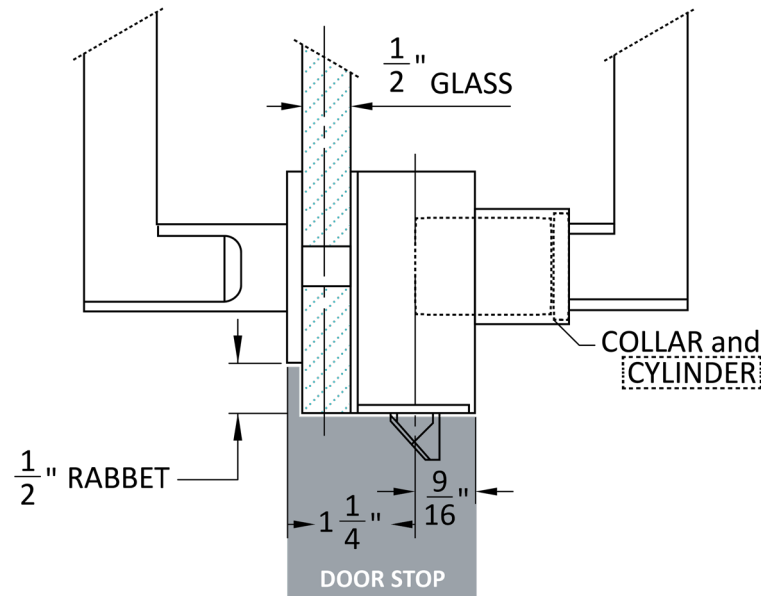
GR8725

# GR87 Rabbeted Glass Patch Dimensions

**INSWING**  
**1-1/2" Cylinder Length**  
**3/8" Collar**



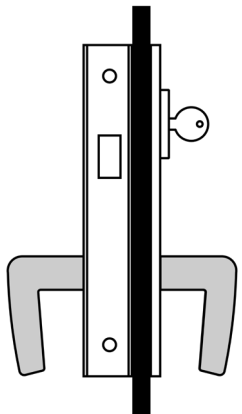
**OUTSWING**  
**1-1/2" Cylinder Length**  
**1" Collar**



**CYLINDER GUIDELINES**

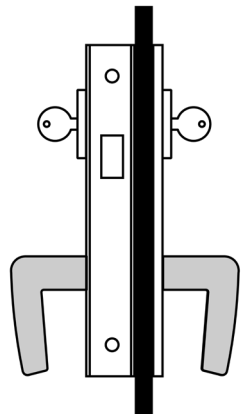
Cylinder Length	Collar Size	
	Inswing	Outswing
3/4"	N/A	3/8"
1"		1/2"
1-1/8"		5/8"
1-1/4"		3/4"
1-3/8"	1/8"	7/8"
1-1/2"	3/8"	1"

# GR87 Series Functions



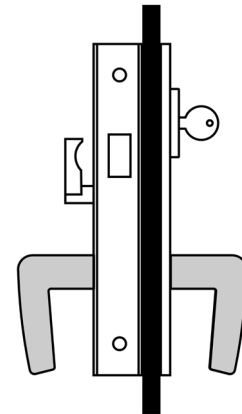
## GR8701 DEADLOCK

Deadbolt by key outside, no inside operation.



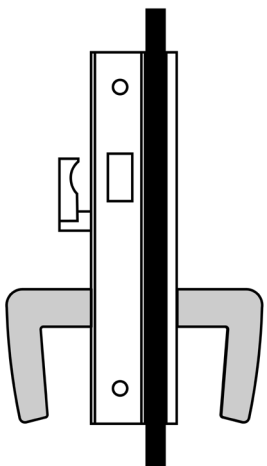
## GR8702 DEADLOCK

Deadbolt by key either side.



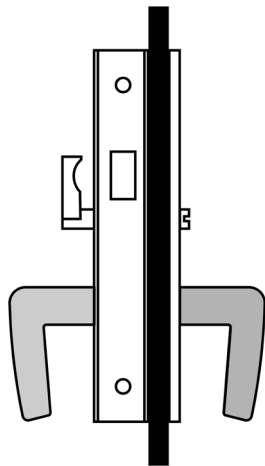
## GR8703 DEADLOCK

Deadbolt by key outside, thumb turn inside.



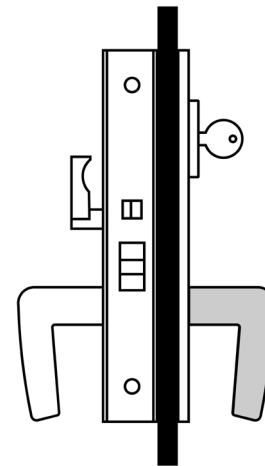
## GR8704 DEADLOCK

Deadbolt by thumb turn inside only.



## GR8705 DEADLOCK

Deadbolt by emergency release outside, thumb turn inside.

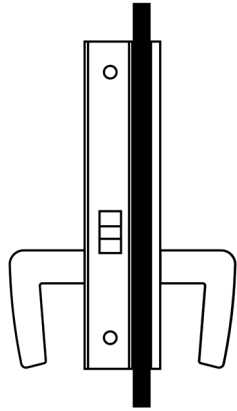


## GR8624 ENTRANCE

Latch bolt by lever either side.

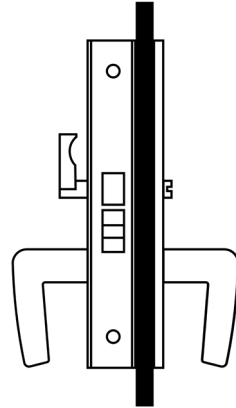
Deadbolt by key outside and turn piece inside.

# GR87 Series Functions



## GR8725 PASSAGE

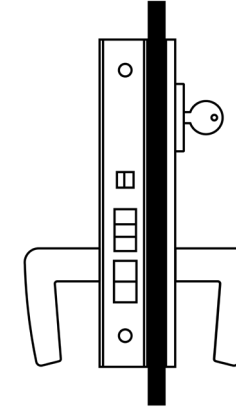
Latch bolt by lever either side.



## GR8739 PRIVACY

Latch bolt by lever either side.

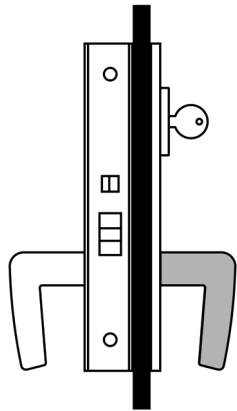
Deadbolt by turn piece inside and optional emergency key outside.



## GR8756 ENTRANCE OR OFFICE

Latch bolt by key outside and handle either side unless outside handle is locked by toggle-action stop.

Auxiliary latch deadlocks latch bolt.



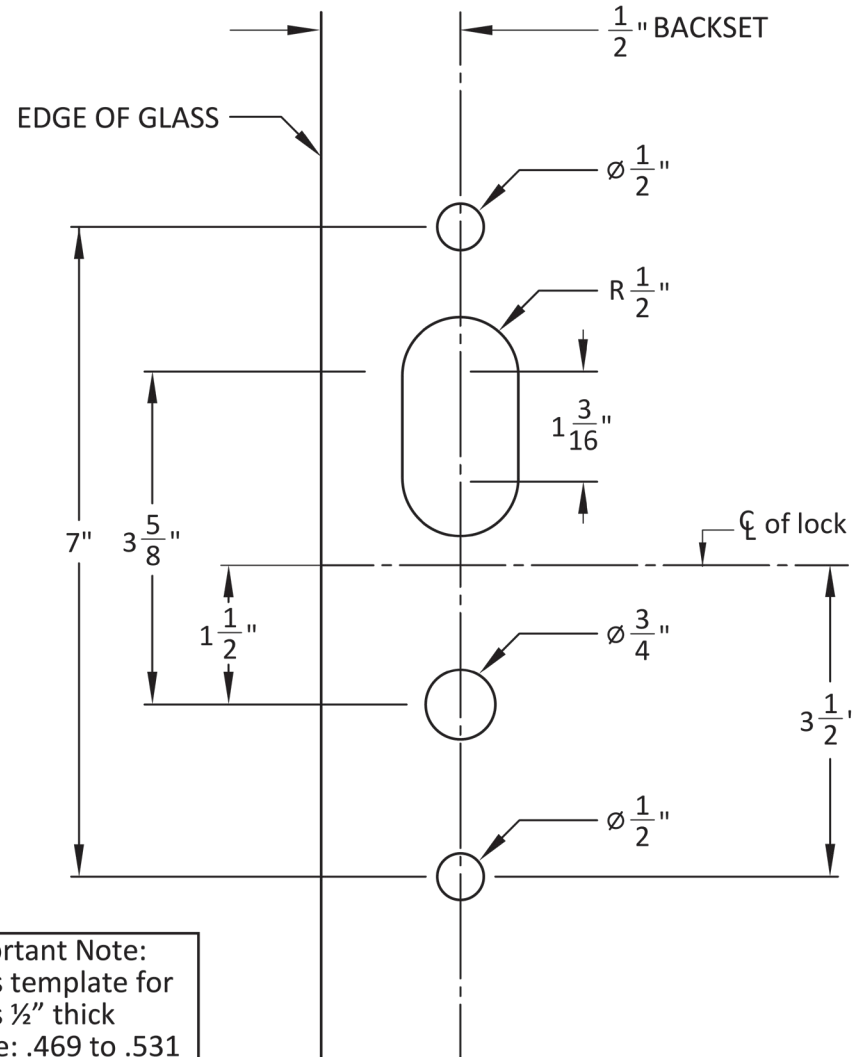
## GR8659 STOREROOM

Latch by handle inside and key outside.

Outside handle always rigid.

Auxiliary latch deadlocks latch bolt.

# GR87 Rabbeted Glass Template



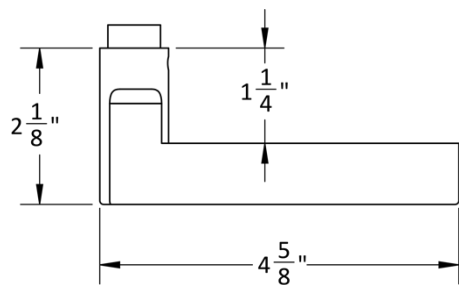
**Important Note:**  
Glass template for  
Glass  $\frac{1}{2}$ " thick  
range: .469 to .531

For use with:  
GR8724  
GR8725  
GR8739  
GR8756  
GR8759  
GR8701  
GR8702  
GR8703  
GR8704  
GR8705

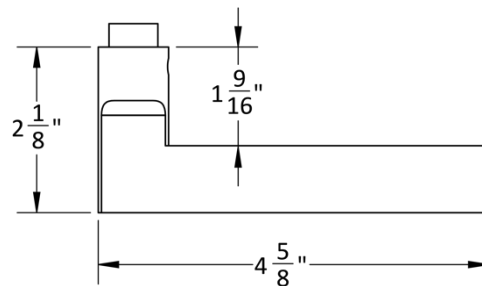


# Accurate Lever Trim

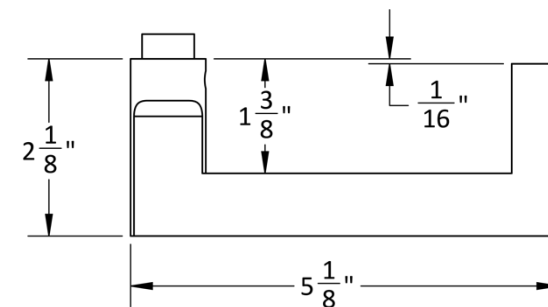
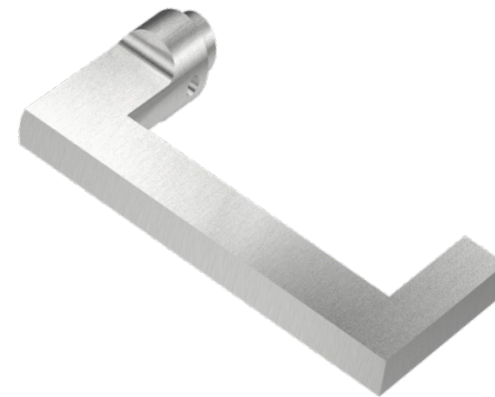
### 18L LEVER



### 19L LEVER

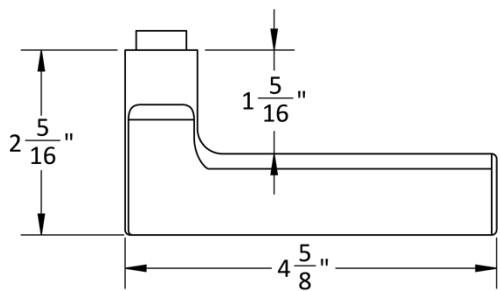


### 20L LEVER

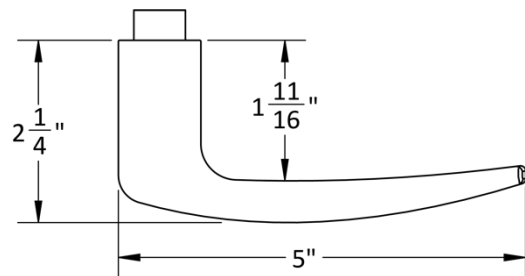


# Accurate Lever Trim

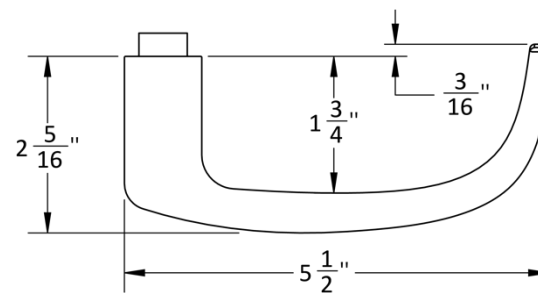
**21L LEVER**



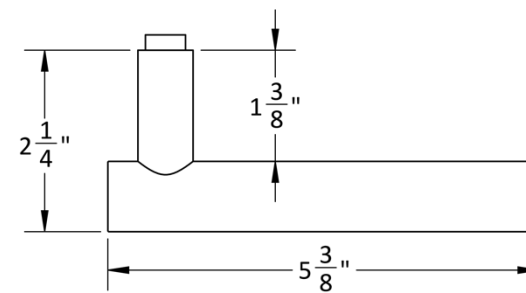
**29L LEVER**



**39L LEVER**



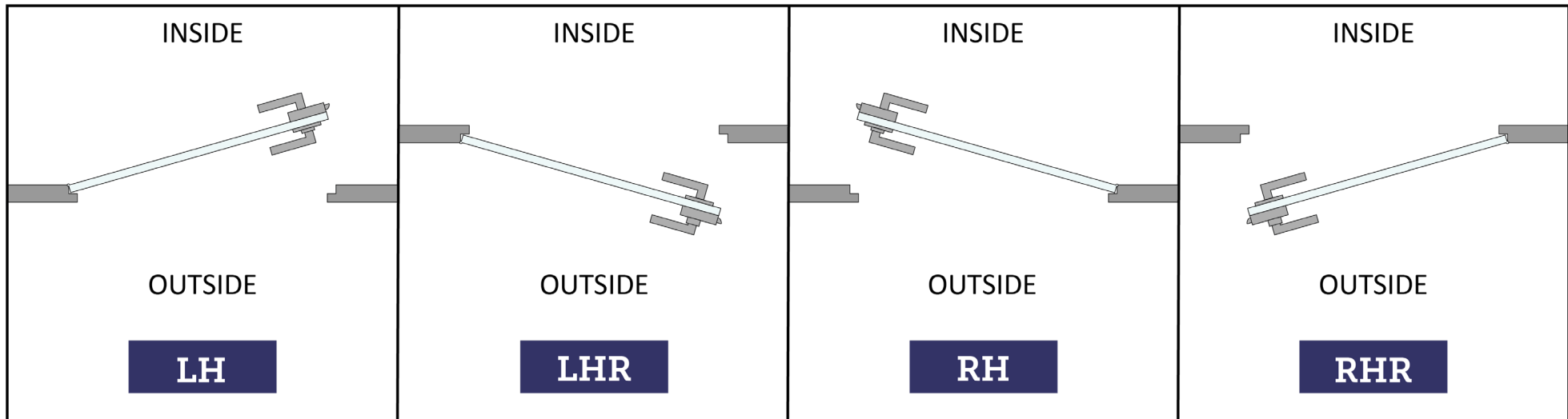
**72L LEVER**  
Furnished Standard





# HOW TO SPECIFY

## HANDING



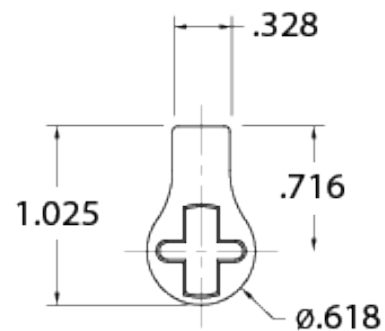
## FINISHES

US28, ESN, US19

Other finishes available, please [contact us](#) for assistance.

## CYLINDERS & KEYING

GR87 Series locks accept any standard American mortise cylinder with a straight cam (other cams may be required for functions not listed). For details on required cams and compatibility with other manufacturers' cylinders, please visit: [Accurate Support](#).





# HOW TO SPECIFY

**FUNCTION.BACKSET.TRIM.FINISH.HAND.DOORTHICKNESS.STRIKE**

**Functions**  
See available functions (pg. 6-7)

**Backset**  
1 1/2" standard

**Trim**  
Accurate Lever  
Trim included  
(pg. 9-10)

**Finishes**  
See available  
finishes (pg. 11)

**Door Thickness**  
Standard 1/2" tempered glass.

**SD Strike**  
Available for framed  
applications.  
No added cost.

## EXAMPLES

**GR87 Entrance | Glass Wall**  
E.g.: GR8756.112.18L.US28.RH.1/2

**GR87 Office | Aluminum Frame (4 7/8" Strike)**  
E.g.: GR8759.112.19L.US19.RH.1/2.SD

**GR87 Passage**  
E.g.: GR8725.112.29L.ESN.RH.1/2

## NOTES

- GR87 Series can be set up for levers by other manufacturers upon request.
- Access control applications available.
- Cylinders must be specified separately if required.

*\*Note: For compatibility please verify vertical spacing as well as through-bolting locations or call for assistance.*

**ACCURATE LOCK & HARDWARE  
MANUFACTURERS OF LOCKS AND  
CUSTOM ARCHITECTURAL HARDWARE**

1 Annie Place | Stamford, CT 06902

**P:** 203.348.8865

**F:** 203.348.5234

**E:** sales@accuratelockandhardware.com

**www.accuratelockandhardware.com**



**AMERICAN CRAFTED  
— SINCE 1972 —**