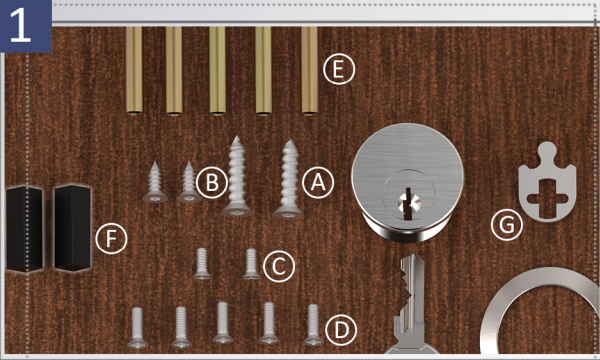
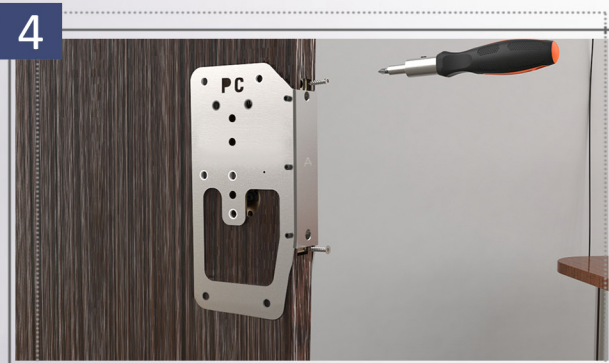


Ligature Resistant Crescent Mortise Set Installation Instructions



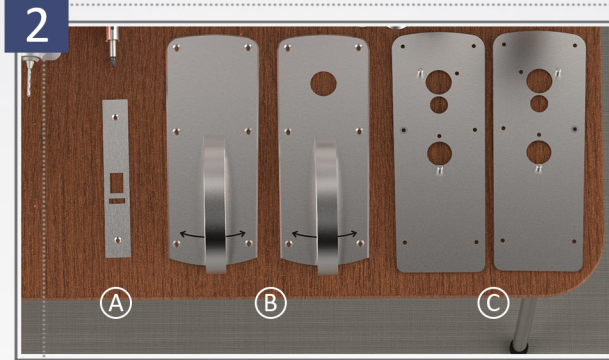
Assembly Pack

- A. (2) Basefront Combo Screws
- B. (2) #8 Torx Wood Screws
- C. (2) #8 Torx Machine Screws
- D. (10) #8x32 Machine Screws
- E. (5) Through-bolt Posts
- F. (2) Free-floating Lever Spindles
- G. (1) Clover leaf Cylinder Cam



Install Door Template

- Use (2) basefront screws to securely fasten door template in place
- Check preparation



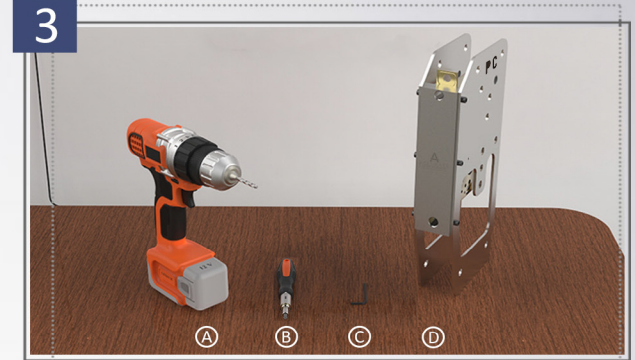
Trim Sets

- A. Face Plate
- B. Mortise Crescent Trim Sets
- C. Sub-plates with Alignment Posts (alignment posts vary based on lock function)
 - (2) Sub-plates are provided for all functions (except: 9159/9147 which only have one and 9158 which has none)



Check/Mark Holes

- Verify through-bolt holes are accurate
- Modify prep as needed



Tools

- A. Electric Drill
- B. Torx Security Screw Driver
- C. Allen Wrench (9/64)
- D. Door Template (when ordered p/n: 9100CH.DT)



Install 9100 Mortise Lock

- Use (2) basefront screws to securely fasten lock in place
- Tighten lock in door prior to installing trim

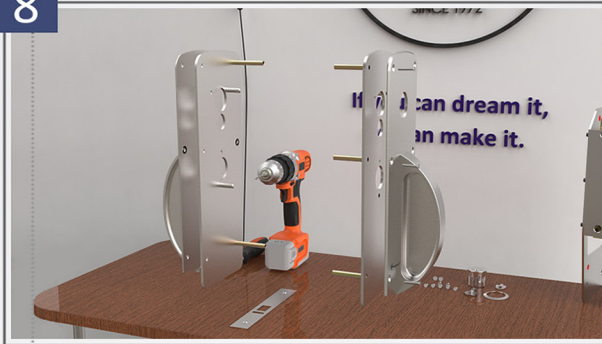
7



Install Spindles

- Prior to installing trim, insert spindle on the diamond into lock
- Spindles are not pinned and float between hub and lever, allowing for variations in door width and improve operation. Older style locks use pinned spindles. The installation is the same for both

8



Assemble Trim

- Use through-bolt posts, machine screws, pre-assembled lever trim and escutcheon plates
- Use (3) posts on hinge side of inside trim, and (2) posts on latch side of outside trim
- Through-bolt posts hold escutcheon and sub-plate together

9



Install Trim Assembly

- Align lever towards hinge side of door
- Ensure lever in proper orientation: deeper portion of lever should face hinge side of door, and rest away from latch
- Use (2) #8x32 machine screws and (1) #8 wood screw to securely fasten trim assembly in place

10



Install Screws

- One screw on either side of the door is surface mounted vs through-bolted
- Test lever operation frequently

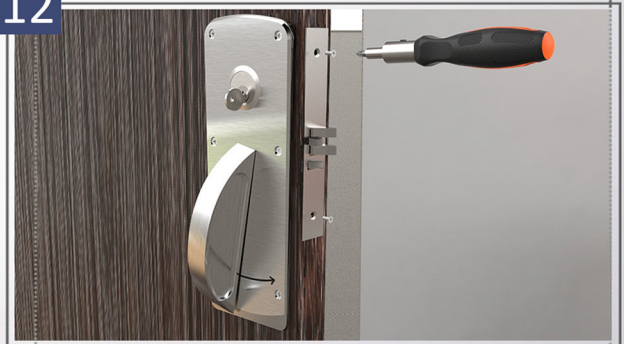
11



Install Cylinder

- Make sure correct clover leaf cam is on the cylinder
 - After cylinder is installed, secure cylinder with set screw via Allen Wrench (9/64)
- Note:** Cylinder should have a ligature resistant tapered collar (see p/n: LR-CC)

12



Install Faceplate

- Secure basefront screws prior to installing faceplate
- Systematically tighten all fasteners and check operation

Contact

1 Annie Place | Stamford, CT 06902

P: 203.348.8865

E: sales@accuratelockandhardware.com

W: www.accuratelockandhardware.com

Watch the Video



View the Template

