

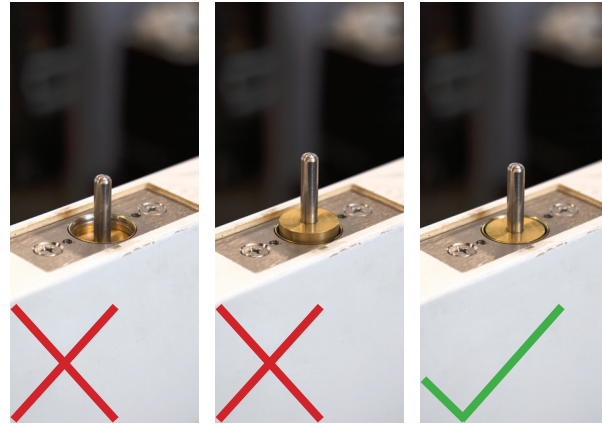


1. Install Self-Latching Lock

Install lock on the door, then insert the self-latching latch into top of door and rotate pin to screw threaded rod into top of the lock.

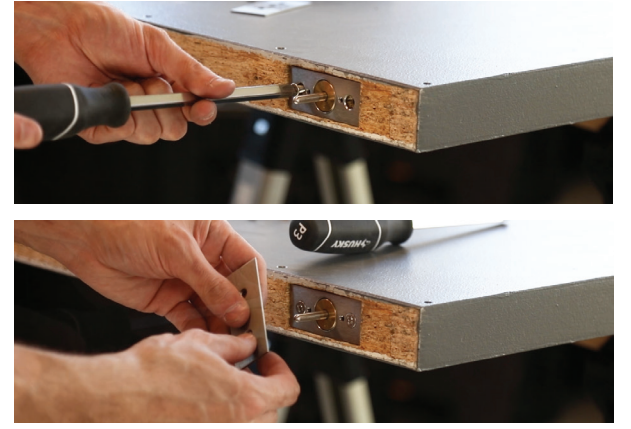
When inserting self-latching latch with the door laying down, one may have to guide the threaded rod with a screwdriver.

NOTE: Inserting the self-latching latch is easiest done with the door standing.



2. Install the Self-Latching Latch

When installing the Self-Latching Latch, ensure that the threaded rod is installed and set to the appropriate length for your door. Then insert the latch into the top of the door with the threaded rod. By spinning the pin, one can connect the latch to the lock body. The brass body of the latching pin **MUST** come up and be flush with the base front when released.



3. Tighten Armor Front Screws

Tighten the base front screws and then attach the faceplate.

LR-SDS Locking

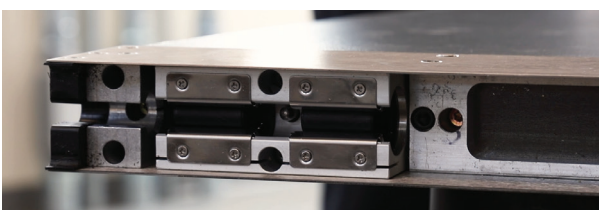
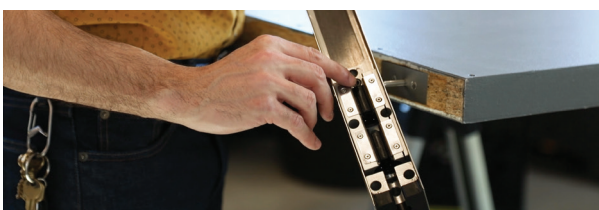
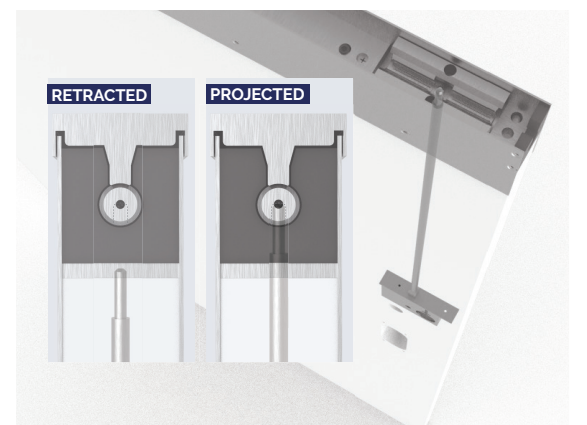
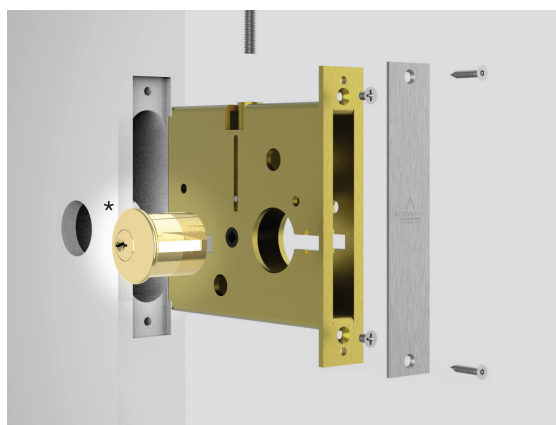
9500VR Vertical Rod Lock

If using a 9500VR vertical rod lock, install the lock and components in the door per the template. Before the Bearing Mounting Assembly is installed on the top of the door, screw down the threaded bolt through the top of the door down into the lock so that the bolt projects above the top of the door when in the retracted position. Then install the Bearing Mounting Assembly - the bolt should project $\frac{1}{8}$ " into the $\frac{1}{4}$ " thick Bearing Mounting Bracket.

* Key orientation 90° turn from standard position.

Also available:

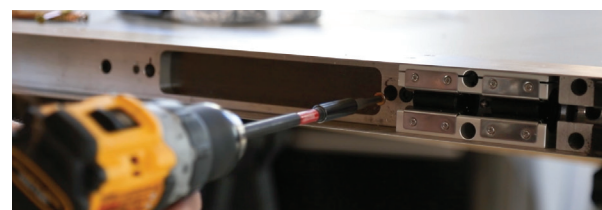
- + No Lock
- + g100 Self Latching



4. Install Bearing Carrier

First, it's important to make sure that the black bearing caps are in place.

Place the Bearing Carrier on top of door making sure that it is centered and plumb on the door. The Bearing Carrier is designed to be exactly as wide as the door so each end of the assembly should be flush to each end of the door. When attaching bearing carrier, make sure the pin is protruding out from the hole in the bearing assembly.

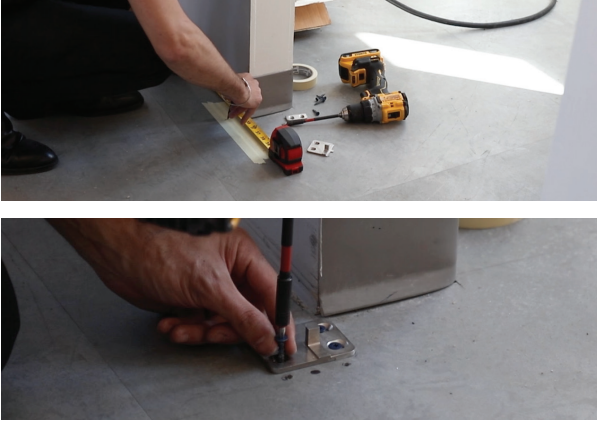


5. Attach with Supplied Fasteners

Use screws provided to secure the assembly to the *top* of the door. Use screws provided to secure the plate cover to the *front* and *back* faces of the door.



6. Attach Hardware



7. Install Floor Guide

Slide door into the **fully open** position and mark the location of the leading edge of the door. Slide the door into the **fully closed** position and mark location of the back edge of the door. The distance between these two points is the overlap of the door coverage in **open** and **closed** position. The floor guide should be located within this footprint and centered on the width of the door edge.

NOTE: A tape measure can be used by measuring door width from either stop position (open/closed).



8. Temporarily Install Bearing Track

First, place only the rail against the wall at the desired location and *temporarily* screw up into the header with *just a few screws*. This will help mark the track for when it is fully assembled and ready for final installation.

Make sure the black tubes are inside the ball bearings to keep the balls from escaping. Remove the track from the header and then slide the track across the top of the door centering the door in the track.



9. Slide Header Onto Door

Place the door upright and carefully slide the header/track across the door. Make sure the header/track enters and moves through the top door mounting assembly straightly and plumb.



10. Prevent Rail from Sliding Off

Place a screw from the top of the rail on both sides of the door to prevent the rail from sliding off when the door is being moved into position.



11. Install Bearing Track Assembly

Tilt the door back as shown with channel engaging the floor guide, push door upright so floor guide enters inside of channel.

NOTE: Remember to remove the screws placed to hold the rail in position.



12. Attach to Header

Install track door assembly into the header using provided screws.



SCAN OR CLICK
THE QR CODE TO WATCH
THE INSTALLATION VIDEO