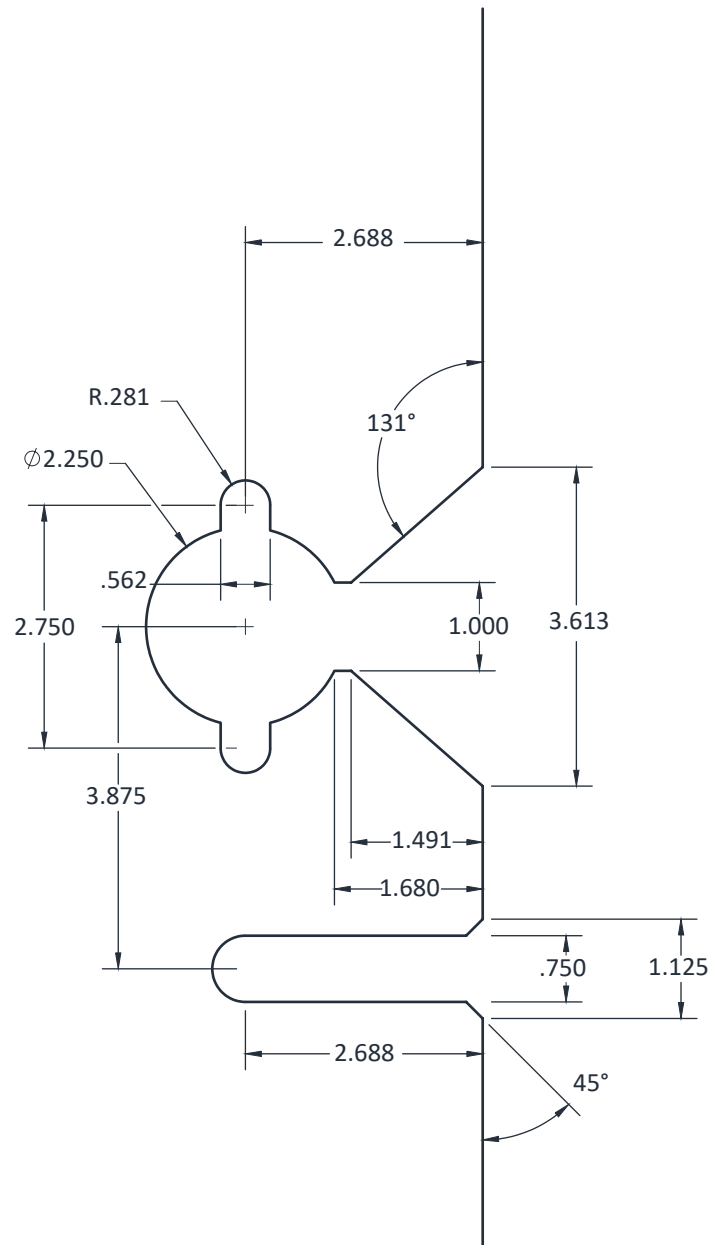


IMPORTANT NOTE:

Glass template for Glass ½”
thick range: .469 to 531



For use with:
G-CYL-NDE
GO-CYL-NDE
G-CYL-NDE-GPS

Note: GPS = glass patch
strike (G-CYL patch locks and
patch strikes are
prepped the same)



Standard ½” Glass Template for:
G-CYL-NDE-GPS Cylindrical (vertical through-bolt)

T-ALH.G-CYL-NDE-GPS