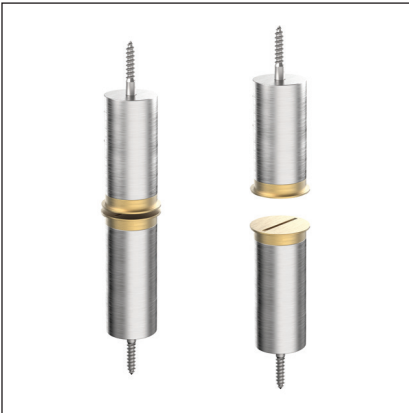




ACCURATE  
LOCK & HARDWARE  
AMERICAN CRAFTED SINCE 1972

## SMALL MAGNETIC CATCH



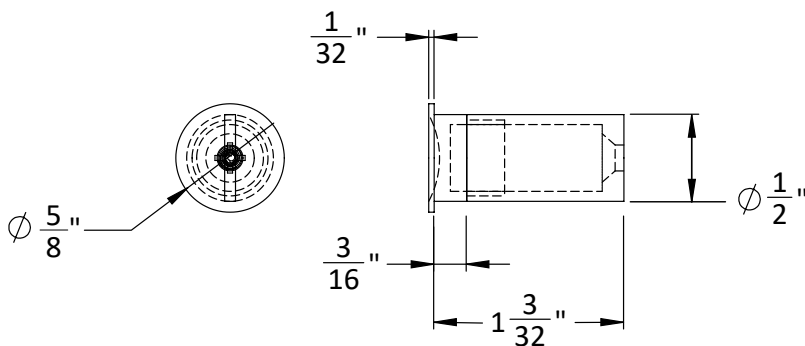
### MC-S

The Small Magnetic Catch offers a pristine method of keeping a door properly secured in the open and closed positions. Combining powerful rare-earth magnets with simple installation and no moving parts, this catch secures most doors seamlessly and quietly.



SCAN TO  
LEARN  
MORE

SOLUTION +  
CATEGORY



The part is provided with the full magnet strength but is adjustable down for lighter doors. The magnets are removed prior to installation.

*Primarily designed for use on cabinet panels up to 1" thick. Can be specified in any ALH finish, including Cerakote™.*