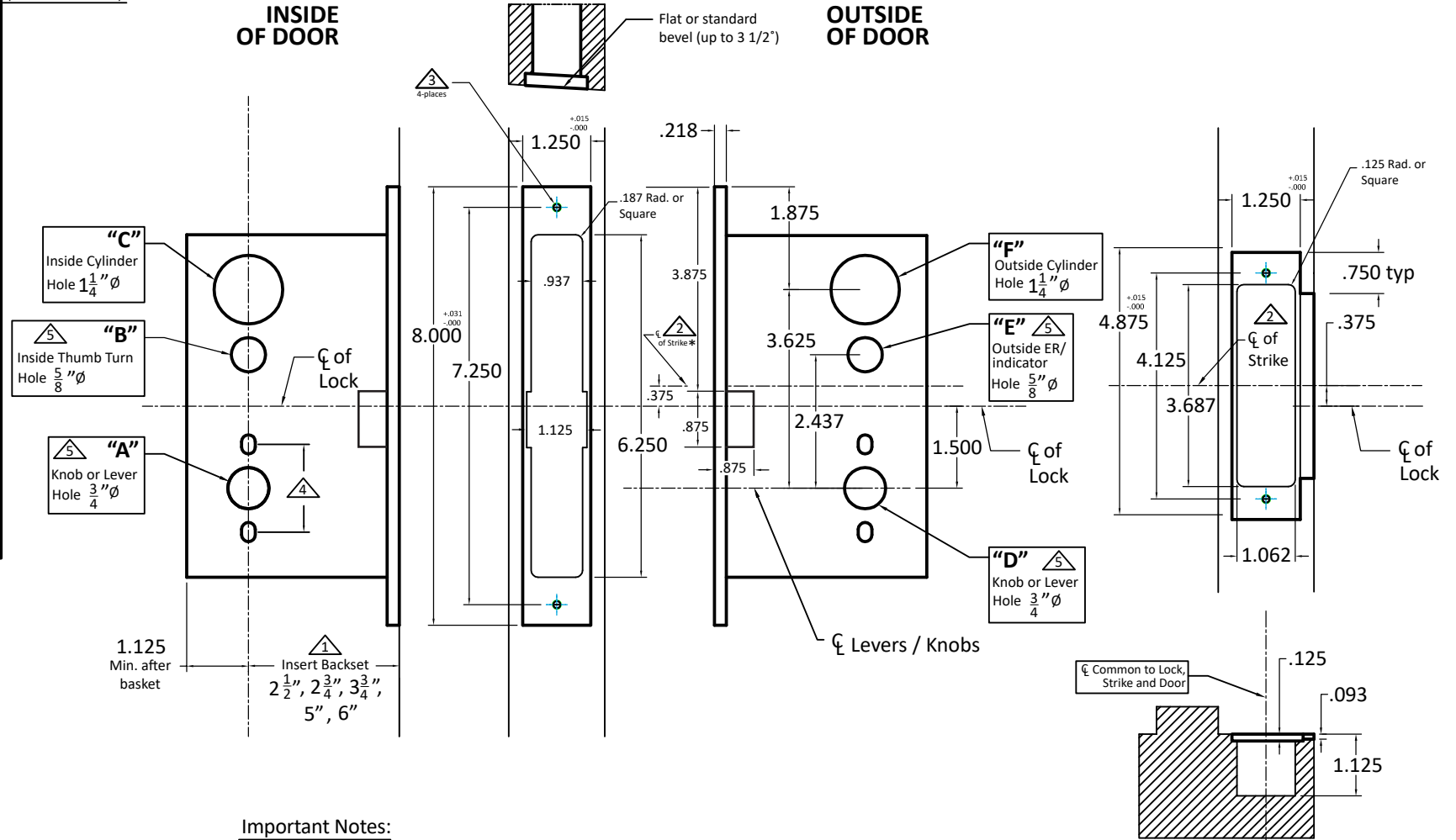


Functions	A	B	C	D	E	F
9100ADL	●			●		
9122	●		●	●		●
9122ARL						
9124	●	●		●		●
9124ARL						
9125	●			●		
9125ARL						
9134	●	●		●		●
9139	●	●		●	○	
9139ARL						
9140				●	○	
9142	●		●	●		●
9143	●			●		
9143E	●	●		●		●
9144	●			●		
9144E	●	●		●		●
9145	●			●		
9145S	●		●	●		●
9146	●			●		
9148	●	●		●		●
9149	●	●		●		●
9153	●	●		●		●
9156	○			○		○
9158	○			○		○
9159	○			○		○
9160	○			○		○
9167	●	●		●		●
9169	●	●		●		●

(No strike needed)

INSIDE OF DOOR

OUTSIDE OF DOOR



Important Notes:

- ▲ Insert backset here 2 1/2", 2 3/4", 3 3/4", 5", 6".
- ▲ ASA strike mounted 3/8" ABOVE centerline of lock.
- ▲ Prep for #12 wood or 12-24 machine screws (lock and strike).
- ▲ Through-bolting holes **ONLY** if required. See trim manufacturers' standard template for details.
Accurate locks accommodate 1 1/2" to 1 11/16" center to centers and up to 1/4" dia. post.
If there are any additional questions about through-bolting, please contact us.
- ▲ Knob/Lever, Thumb Turn, and ER holes may vary from different trim manufacturers.
Please refer to their templates to confirm dimensions.

Additional Notes:

- a) **Responsibility:** Door and frame manufacturers are responsible for providing adequate construction or re-inforcement for proper installation of hardware shown.
- b) Please contact us for double lipped template if needed.
- c) See spec sheets for additional lock details.



Standard 9100 Lever x Lever or Knob x Knob Template. All backsets

T-ALH.9100.LL