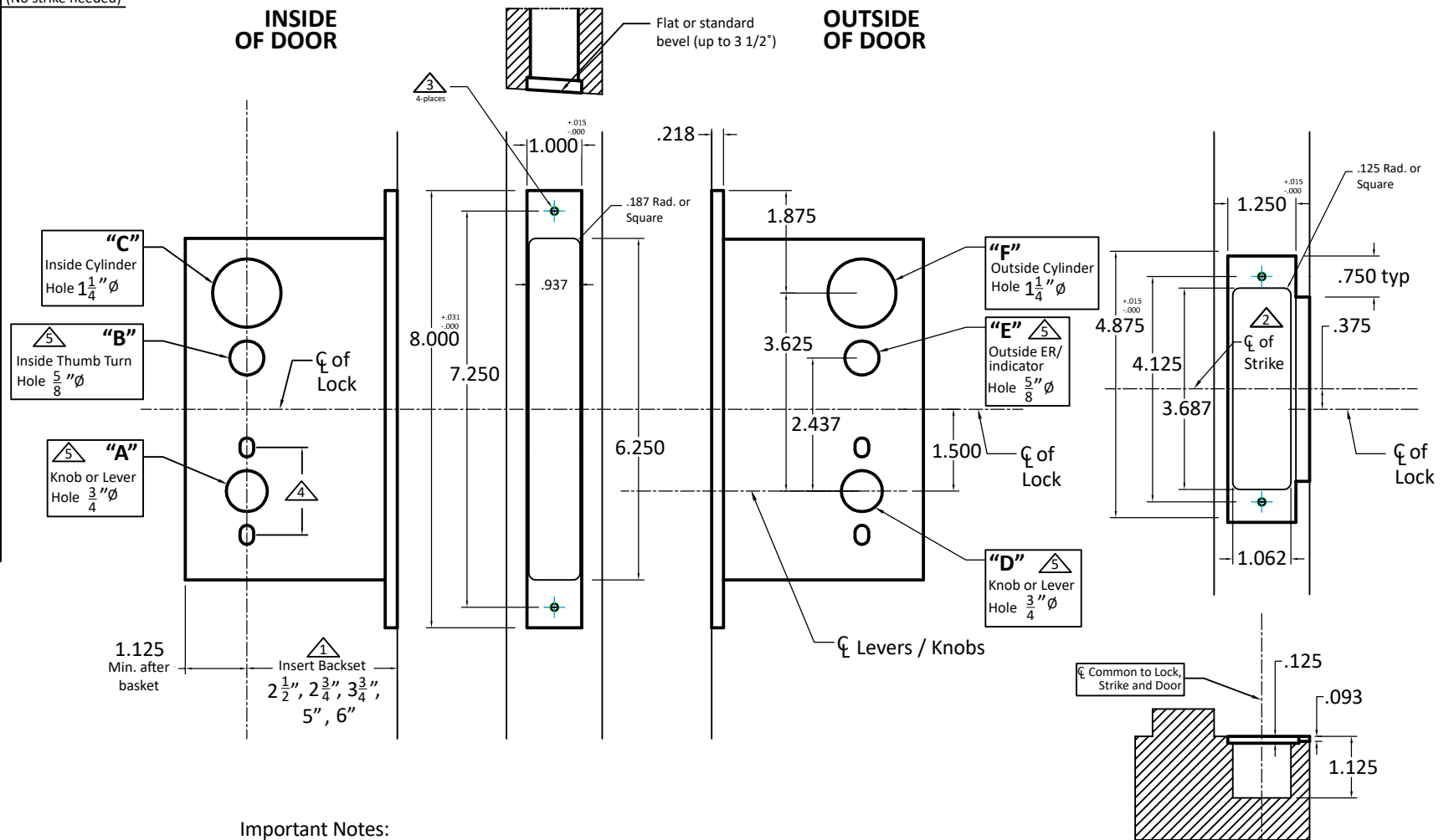


Functions	A	B	C	D	E	F
9000ADL	●			●		
9022	●		●	●		●
9022ARL			●			
9024	●	●		●		●
9024ARL		●				●
9025	●			●		
9025ARL						
9034	●	●		●		●
9039	●	●		○		
9039ARL		●		○		
9040				●		●
9042	●		●	●		●
9043	●	●		●		●
9043E	●	●		●		●
9044	●			●		●
9044E	●			●		●
9045				●		
9045S	●		●	●		●
9046	●			●		●
9048	●	●		●		●
9049	●	●		●		●
9053	●	●		●		●
9056				○		
9058	○			○		
9059	●			○		
9060	○			○		
9067	●	●		●		●
9069	●			●		●

(No strike needed)

INSIDE OF DOOR

OUTSIDE OF DOOR



Important Notes:

- ① Insert backset here $2\frac{1}{2}$ ", $2\frac{3}{4}$ ", $3\frac{3}{4}$ ", 5", 6".
- ② ASA strike mounted $\frac{3}{8}$ " ABOVE centerline of lock.
- ③ Prep for #12 wood or 12-24 machine screws (lock and strike).
- ④ Through-bolting holes **ONLY** if required. See trim manufacturers' standard template for details.
Accurate locks accommodate $1\frac{1}{2}$ " to $1\frac{11}{16}$ " center to centers and up to $\frac{1}{4}$ " dia. post.
If there are any additional questions about through-bolting, please contact us.
- ⑤ Knob/Lever, Thumb Turn, and ER holes may vary from different trim manufacturers.
Please refer to their templates to confirm dimensions.

Additional Notes:

- a) **Responsibility:** Door and frame manufacturers are responsible for providing adequate construction or re-inforcement for proper installation of hardware shown.
- b) Please contact us for double lipped template if needed.
- c) See spec sheets for additional lock details.



Standard 9000 Lever x Lever or Knob x Knob Template. All backsets

T-ALH.9000.LL