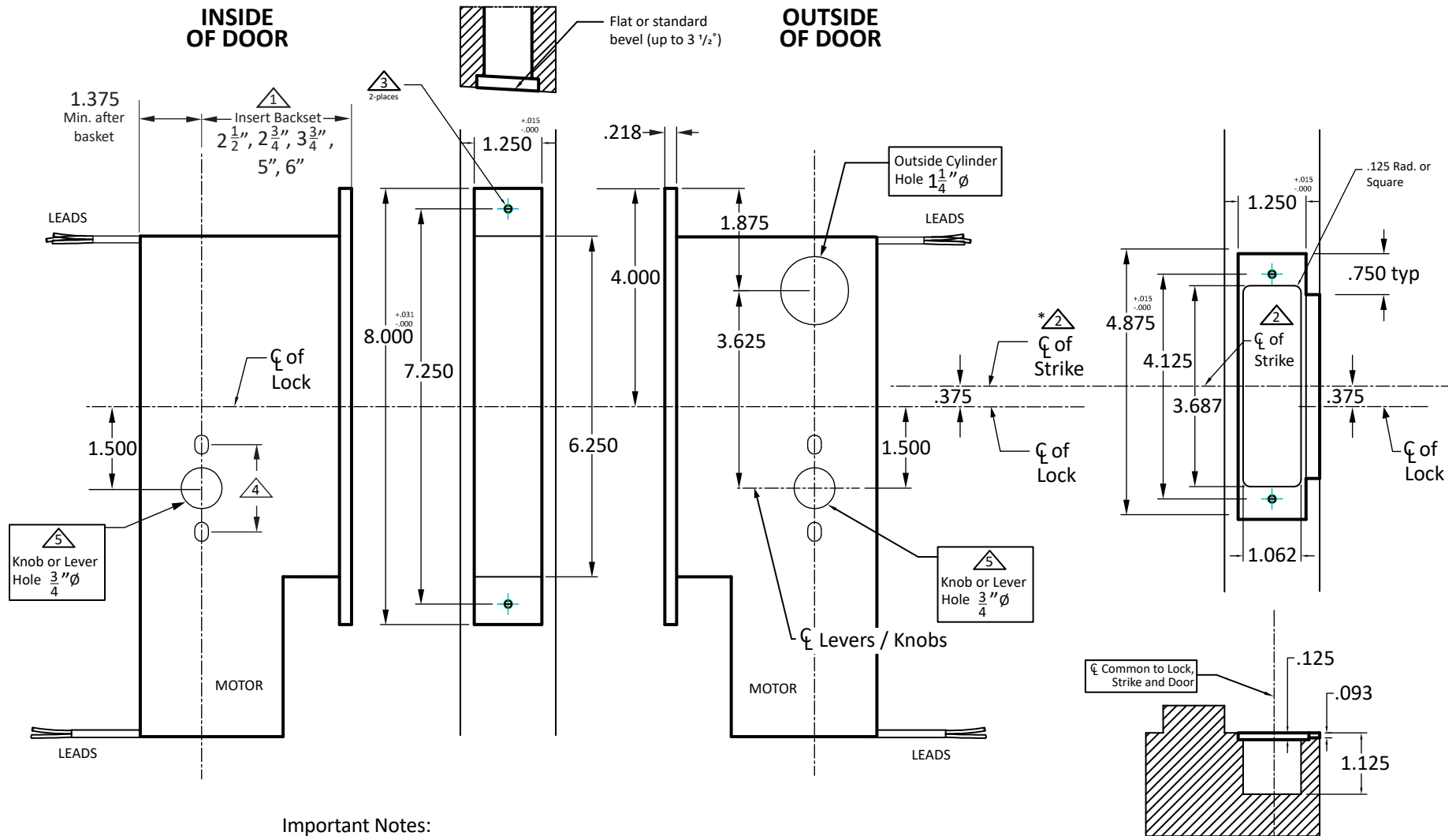


INSIDE OF DOOR

OUTSIDE OF DOOR



Important Notes:

- ① Insert backset here $2\frac{1}{2}"$, $2\frac{3}{4}"$, $3\frac{3}{4}"$, $5"$, $6"$.
- ② ASA strike mounted $\frac{3}{8}"$ ABOVE centerline of lock.
- ③ Prep for 12-24 machine screws (lock and strike.)
- ④ Through-bolting holes **ONLY** if required. See trim manufacturers' standard template for details.
Accurate locks accommodate $1\frac{1}{2}"$ to $1\frac{11}{16}"$ center to centers and up to $\frac{1}{4}"$ dia. post.
If there are any additional questions about through-bolting, please contact us.
- ⑤ Knob/Lever holes may vary from different trim manufacturers. Please refer to their templates to confirm dimensions.

Additional Notes:

- a) **Responsibility:** Door and frame manufacturers are responsible for providing adequate construction or re-inforcement for proper installation of hardware shown.
- b) Please contact us for double lipped template if needed.
- c) See spec sheets for additional lock details.