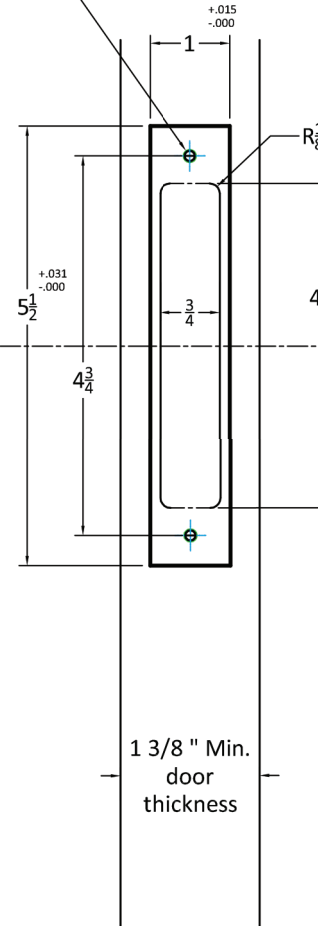
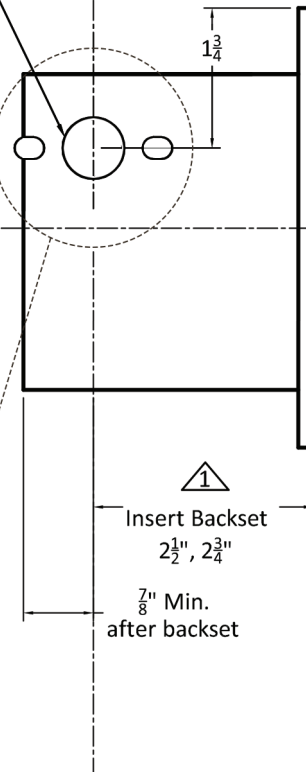
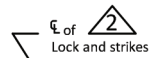
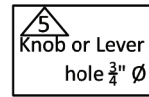
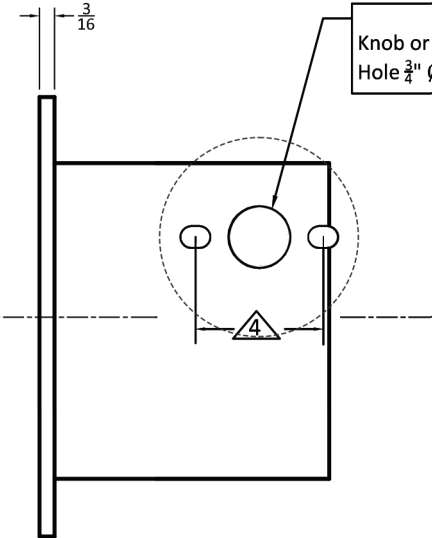
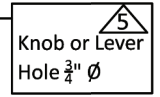


ONLY PREPARE LEVER/KNOB THROUGH-BOLTING HOLES IF USING ACTIVE LEVER TRIM (AS A DUMMY).

INSIDE OF DOOR



OUTSIDE OF DOOR



Notes:

- ▲ Insert backset here 2 1/2" or 2 3/4"
- ▲ Centerline of strike and front are the same.
- ▲ Prep for #8 wood or 8-32 machine screws.
- ▲ Through-bolting holes **ONLY** if required. See trim manufacturers standard template for details.
- ▲ Accurate lock's accommodates 1 1/2" to 1 11/16" center to centers and up to 1/4" dia. post.
- ▲ Knob holes may vary from different trim manufacturers. Please refer to their templates to confirm these dimensions.

Additional Notes:

- a) **Responsibility:** Door and frame manufacturers are responsible for providing adequate construction or re-inforcement for proper installation of hardware shown.
- b) See spec sheets for additional lock details.