



ACCURATE

LOCK & HARDWARE

AMERICAN CRAFTED SINCE 1972

LR-SDS Ligature Resistant Sliding Door System

IMPROVE SAFETY. SAVE SPACE. ENHANCE PATIENT DIGNITY.

LR-SDS

LIGATURE RESISTANT SLIDING DOOR SYSTEM

SEAMLESS

- Concealed track system hangs a 1³/₄" thick door with minimal surface applied gap without any exposed anchor points or cavities
- Concealed floor guide keeps door flush against wall (optional LR-SDS-TRANSOM, see pg. 17-18)
- Concealed vertical rod bolt locks into track providing privacy with no accessible latch bolt or strike
- Ligature resistant thumb turn and flush pull

SAFE

- Top door edge not accessible as a ligature point
- Eliminates barricade tactics and using door as a weapon

SECURE

- Privacy function and keyed deadbolt available with clutch override feature so staff can gain entry in barricade situations
- In addition to locking in the "closed" position, other positions can be added (e.g. locked in open position)

SILENT

- Rubber cladding dampens closure allowing quieter operation and more resistance to abuse (Stop Kit)

SPACE SAVING

- Contributes to a smaller patient room design saving up to 45% of space



REMOVABLE STOP



TRACK CLOSE UP



TRACK CUTAWAY



FLOOR GUIDE

LR-SDS

FOR BEHAVIORAL HEALTHCARE ENVIRONMENTS

DURABILITY

- Strength tested to meet or exceed one 150 ft-lb impact per section 6.1.1.2 of ANSI A250.13-2014. System withstands abuse and continues to function even after door failure.
- The LR-SDS is available with a Ligature Resistant Shoe (when ordered) that provides structural integrity against lateral forces applied by patient abuse.* This captures the lower leading edge of the door when in the closed position.
- Withstood simulated abuse testing by architectural consultant with door 6" open.

**The use of reinforced hollow metal doors is recommended for high abuse environments.*

LOAD CAPACITY

- There are two ball bearing blocks, each having a dynamic load capacity of 1240lbs

Please note: There is currently no "Open Door" ASTM/ANSI/ASHE performance standards for sliding doors beyond ADA compliance, acoustics and force applied to them. Existing standards only evaluate a closed and secure door.



LR-SDS: Functions

Nightingale
Awards



Nightingale
Awards



THE
SYMPOSIUM
DISTINCTION
AWARDS



LR-SDS-0 PASSAGE

Non-locking function.

Solution includes:

- Ligature resistant track
- (2) U7001AL flush pulls

LR-SDS-9501 SINGLE CYLINDER FUNCTION

Vertical rod bolt operated by cylinder outside to lock/unlock door.

Solution includes:

- Ligature resistant track
- 9501VRT vertical rod lock
- (2) U7001AL flush pulls

Mortise cylinders and collars required (specify separately).

LR-SDS-9502 DOUBLE CYLINDER FUNCTION

Vertical rod bolt operated by cylinder either side to lock/unlock door.

Solution includes:

- Ligature resistant track
- 9502VRT vertical rod lock
- (2) U7001AL flush pulls

Mortise cylinders and collars required (specify separately).

LR-SDS-9503 CYLINDER/THUMB TURN FUNCTION

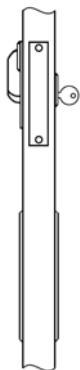
Vertical rod bolt operated by cylinder outside or thumb turn inside to lock/unlock door. Thumb turn provided with clutch override feature to allow cylinder operation when thumb turn held in locked position

Solution includes:

- Ligature resistant track
- 9503VRT mortise vertical rod
- LR-ADA thumb turn with clutch
- (2) U7001AL flush pulls

Mortise cylinder and collar required (specify separately).

LR-SDS: Functions



LR-SDS-9503ST CLASSROOM DEADLOCK FUNCTION

Vertical rod bolt operated by cylinder outside to lock/unlock door.

When door is locked, thumb turn inside will retract the bolt to allow egress (thumb turn will not lock door)

Solution includes:

- Ligature resistant track
- 9503STVRT mortise vertical rod
- LR-ADA thumb turn
- (2) U7001AL flush pulls

Mortise cylinder and collar required (specify separately).



LR-SDS-9505 PRIVACY

Vertical rod bolt operated by thumb turn inside, emergency release outside.

Outside emergency release will override inside thumb turn if forcibly held.

Solution includes:

- Ligature resistant track
- 9505VRT vertical rod
- LR-ADA thumb turn with clutch
- LR-ER emergency release
- (2) U7001AL flush pulls



LR-SDS-9503ST-i CLASSROOM DEADLOCK WITH INDICATOR

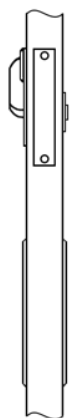
Vertical rod bolt operated by cylinder outside to lock/unlock door.

When door is locked (reflected on cylinder indicator outside), thumb turn inside will retract the bolt to allow egress (thumb turn will not lock door).

Solution includes:

- Ligature resistant track
- 9503STVRT mortise vertical rod
- 7200SCi cylinder indicator
- LR-ADAI turn piece
- (2) U7001AL flush pulls

Mortise cylinder and collar required (specify separately).



LR-SDS-9505i PRIVACY WITH INDICATOR

Vertical rod bolt operated by LR-ERi emergency release outside.

LR-ADA thumb turn inside.

Outside LR-ERi will override inside thumb turn if forcibly held.

Solution includes:

- Ligature resistant track
- 9505VRT mortise vertical bolt
- LR-ADAI thumb turn with clutch
- LR-ERi emergency release with indicator
- (2) U7001AL flush pulls

**SELF LATCHING FUNCTIONS
ALSO AVAILABLE (REFER TO THE
SL-LR-SDS FOR DETAILS)**

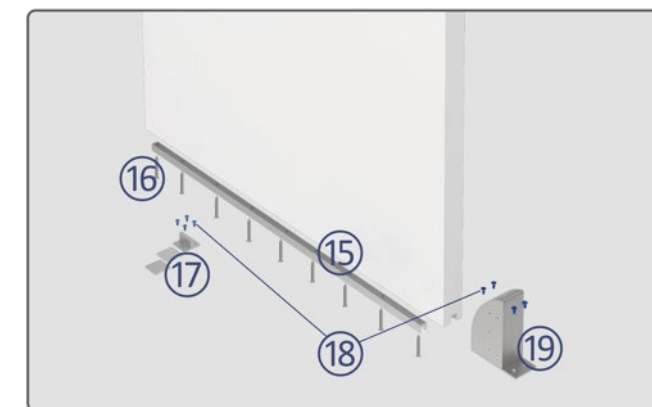
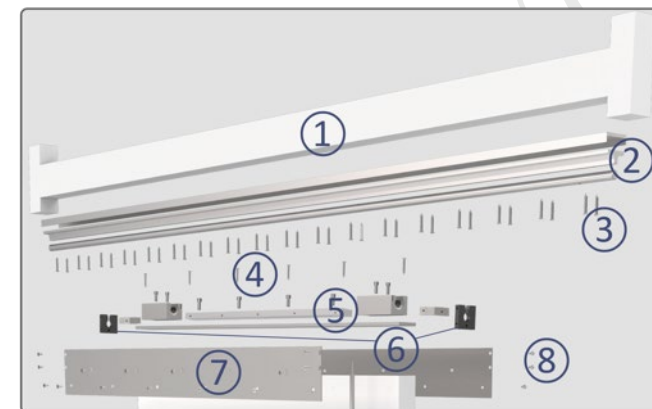
**OTHER SPECIALTY FUNCTIONS
MAY BE AVAILABLE AS A SPECIAL
ORDER. PLEASE CALL FOR
ASSISTANCE.**



LR-SDS: Assembly

LR-SDS-9503ST CLASSROOM DEADLOCK FUNCTION

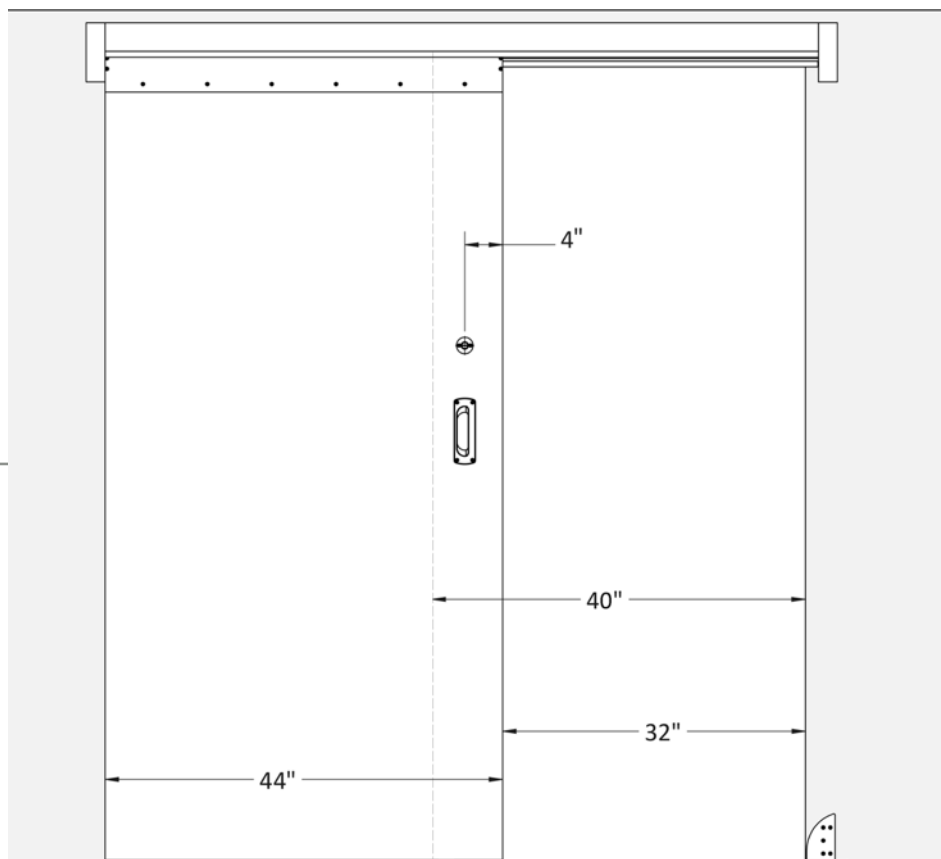
LR-SDS-9503ST ASSEMBLY	
1	Header (by others)
2	Bearing Track Assembly: <ul style="list-style-type: none"> Ligature Resistant Skirt Bearing Guide Assembly
3	#8 x 2" Construction Screws
4	#9 x 2 1/2" Construction Screws
5	Bearing Mounting Assembly: <ul style="list-style-type: none"> Bearing Mounting Screws Ball Bearing Blocks Bearing Mounting Bracket Support Bearing Blocks
6	Ligature Resistant Caps
7	Cover Plates
8	#8 x 1/2" Pin-in Torx® Mounting Screws
9	Locking Rod
10	9503STVRT Vertical Rod Bolt
11	LR-ADA Thumb Turn
12	Mortise Cylinder (specify separately)
13	9500VR Faceplate
14	U7001AL Flush Pull
15	Bottom Guide Channel Liner
16	#8 x 3/4" Construction Screws
17	Bottom Guide with Shim Kit*
18	Tapcon® Anchors for Concrete
19	Ligature Resistant Shoe (when ordered)



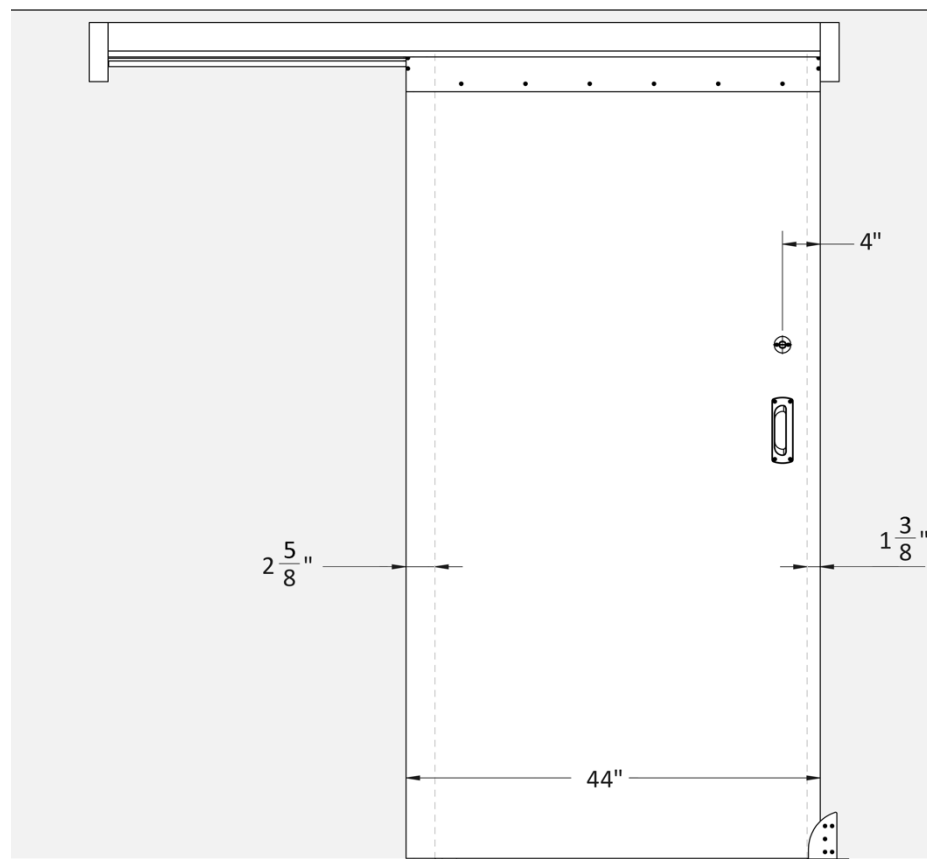
*Optional LR-SDS-TRANSOM available, see page 17-18.

LR-SDS: Opening Specifications, Outside View

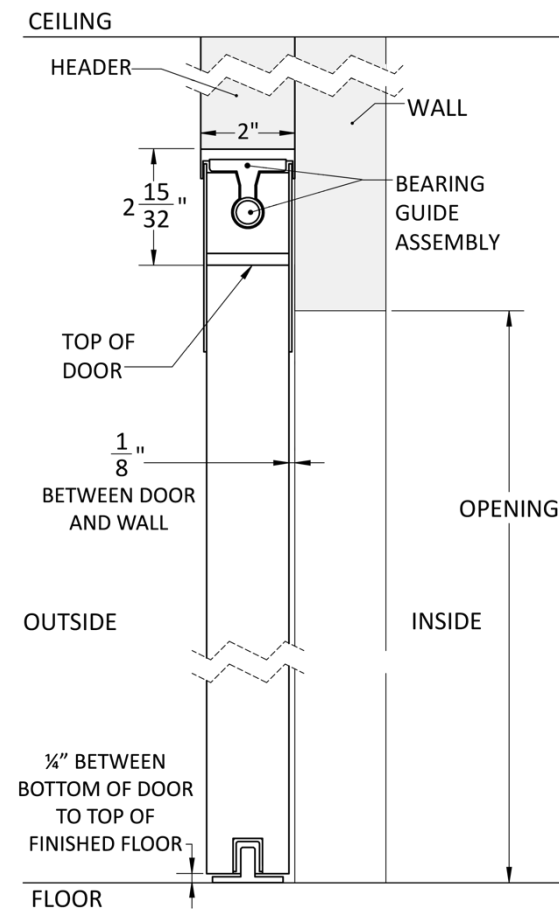
LR-SDS-9505 PRIVACY FUNCTION



OPEN



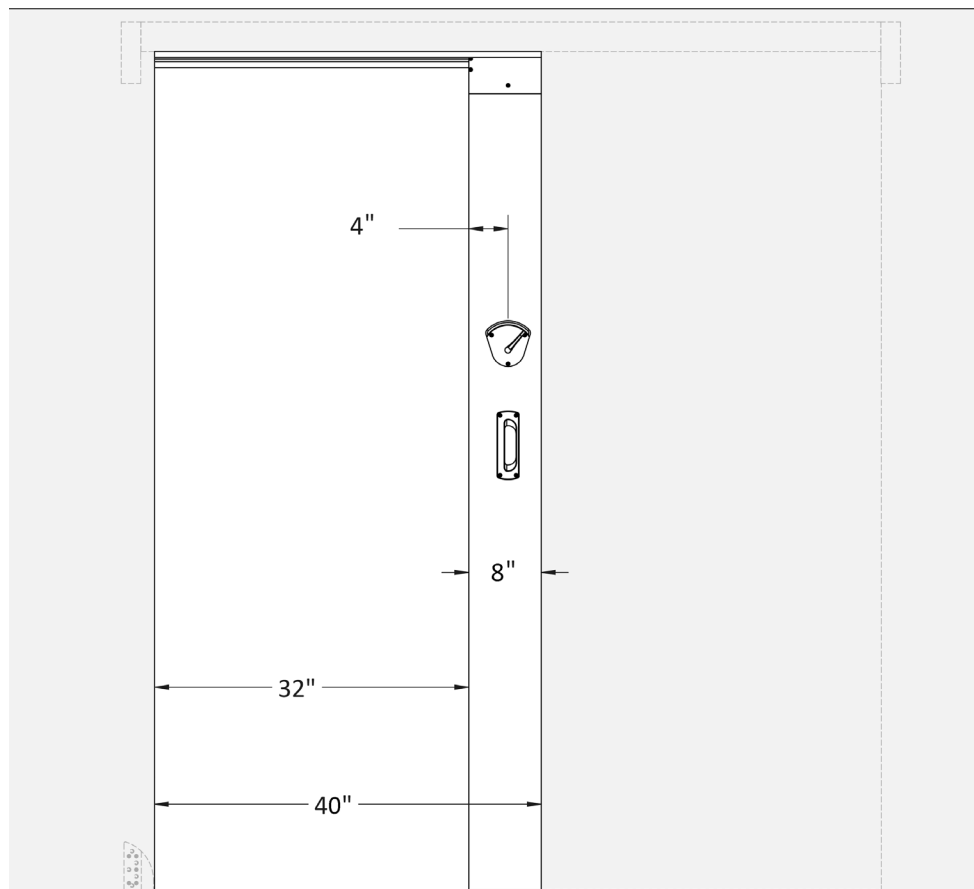
CLOSED



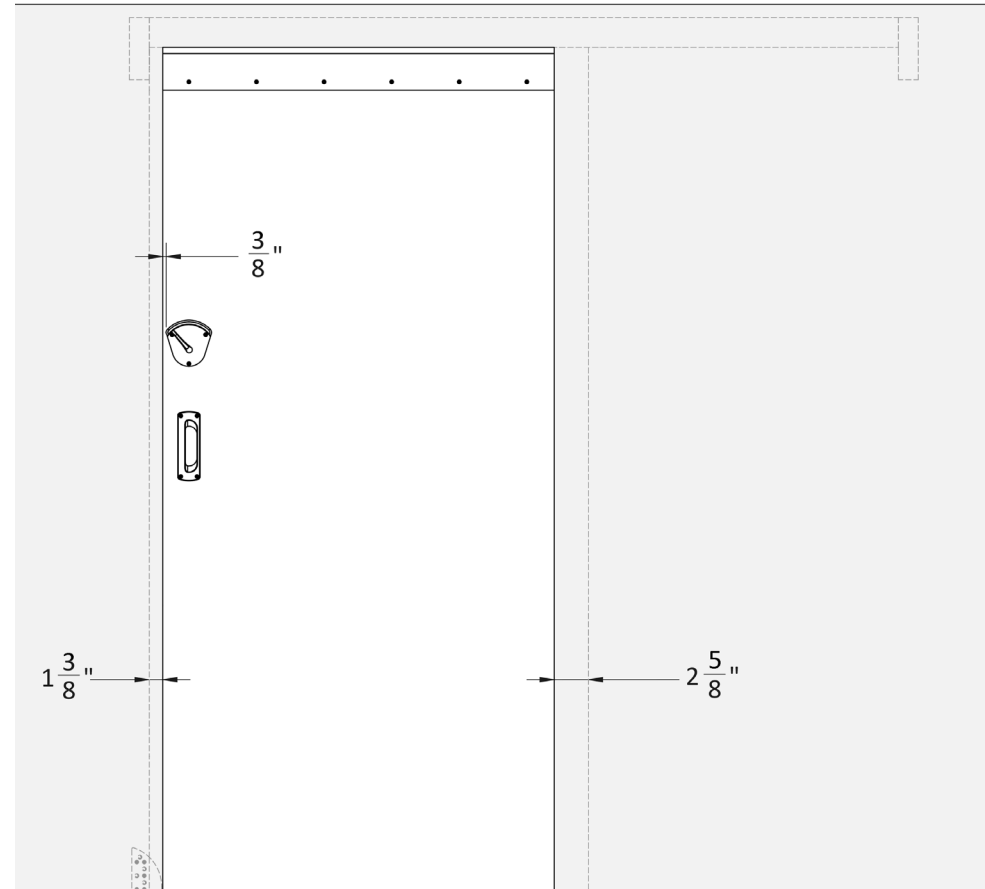
RECOMMENDED
HEADER

LR-SDS: Opening Specifications, Inside View

LR-SDS-9505 PRIVACY FUNCTION



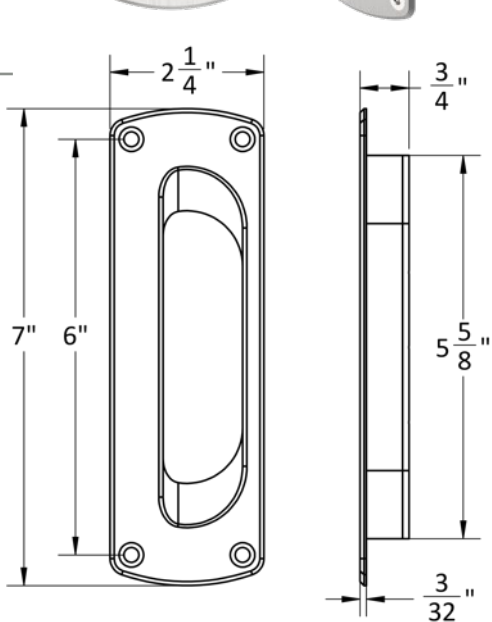
OPEN



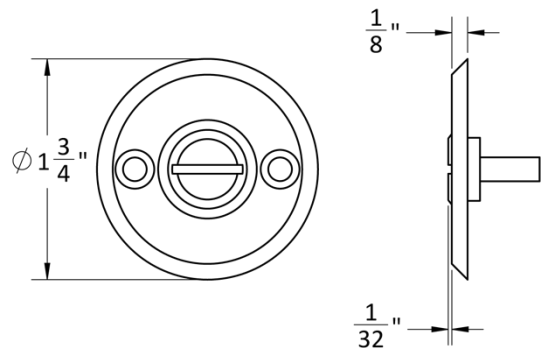
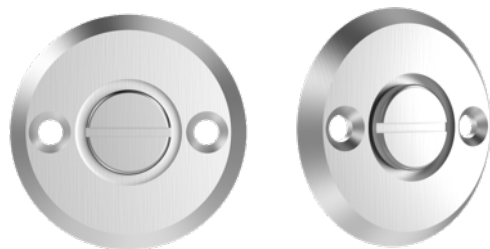
CLOSED

LR-SDS: Components

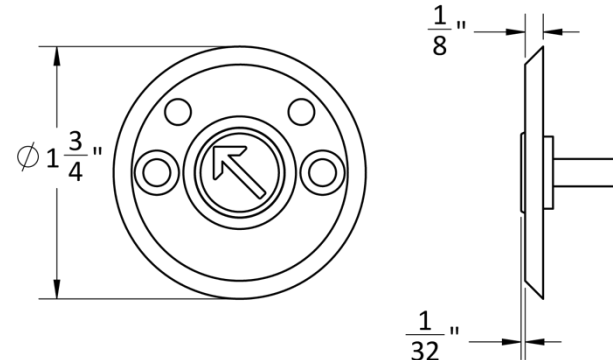
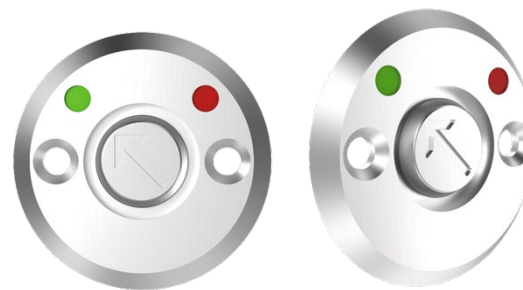
**U7001AL
FLUSH PULL**



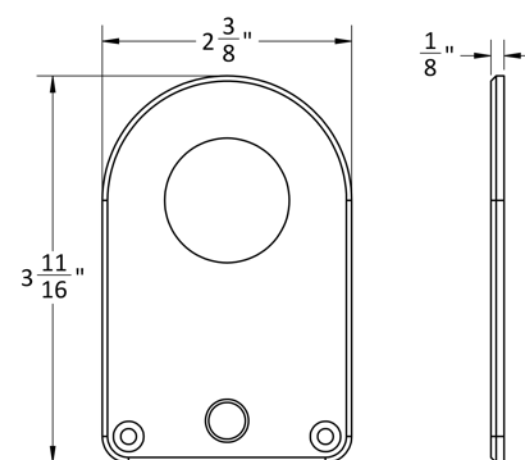
**LR-ER
EMERGENCY RELEASE**



**LR-ERi
EMERGENCY RELEASE WITH
INDICATOR**

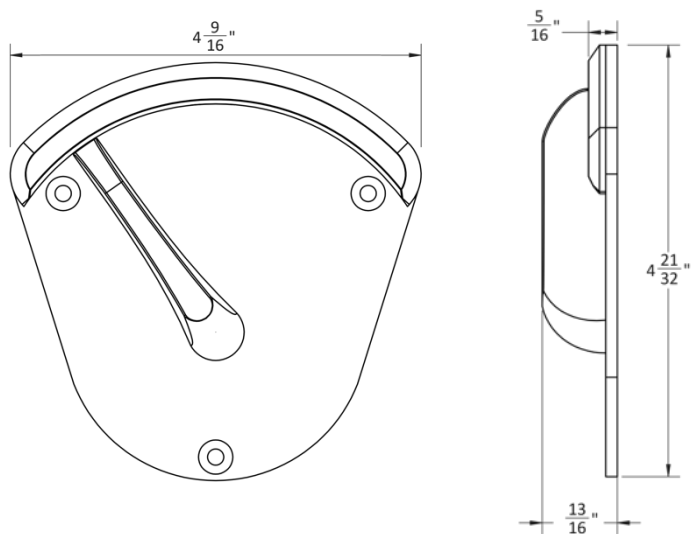


**7200Sci
CYLINDER INDICATOR**



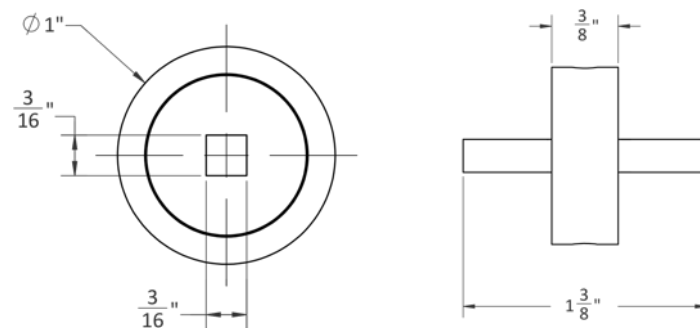
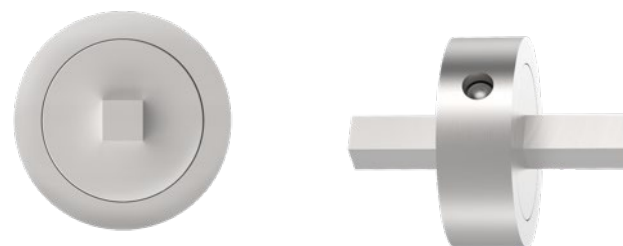
LR-SDS: Components

LR-ADA THUMB TURN



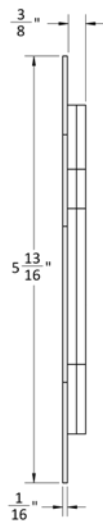
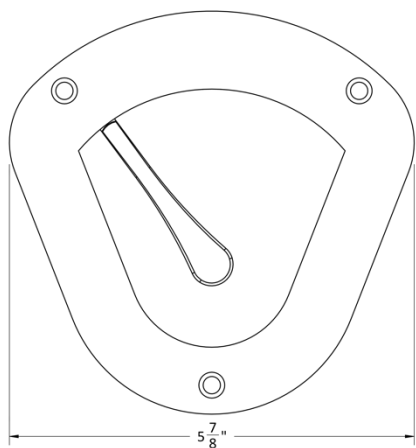
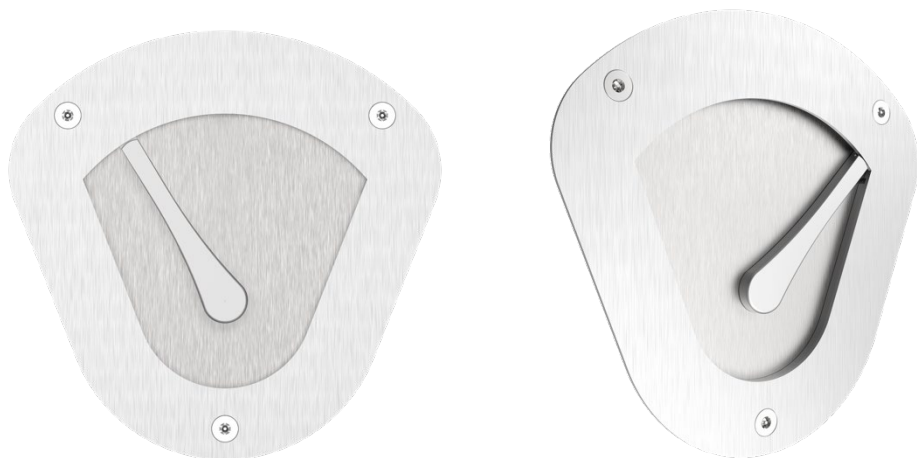
CLUTCH

To enable authorized override

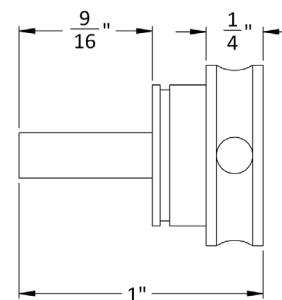
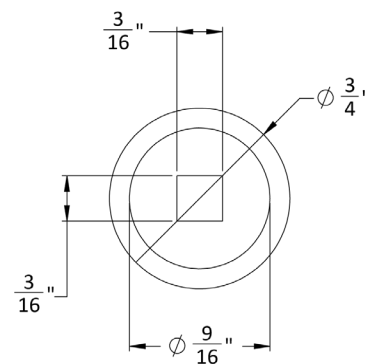
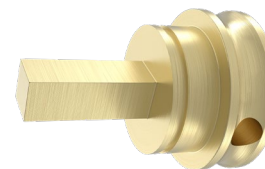


LR-SDS: Components

LR-ADA-F FLUSH THUMB TURN

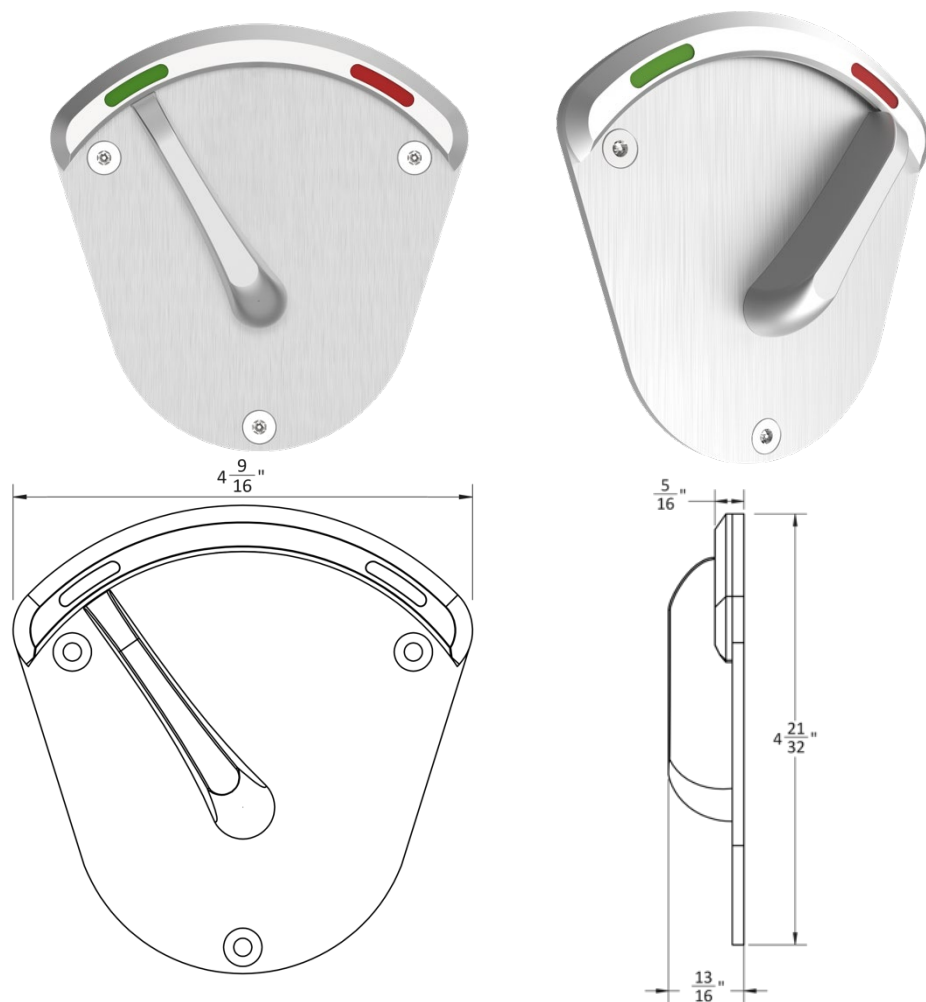


CLUTCH To enable authorized override

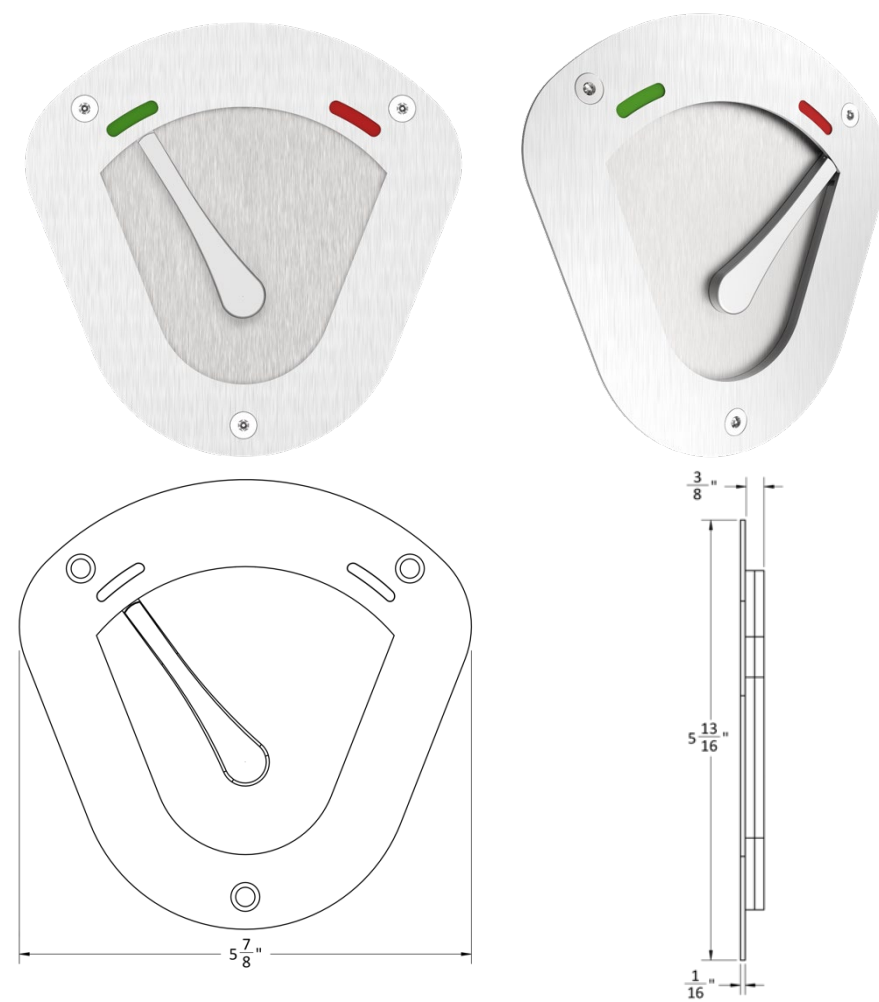


LR-SDS: Components

LR-ADAI
THUMB TURN WITH INDICATOR

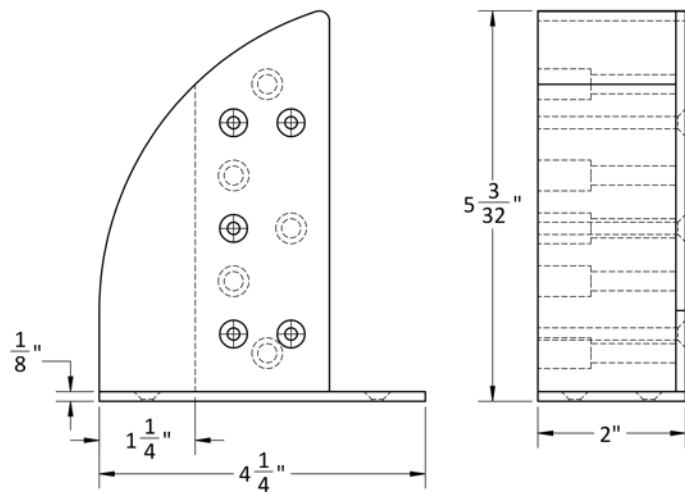


LR-ADA-Fi
FLUSH THUMB TURN



LR-SDS: Shoe

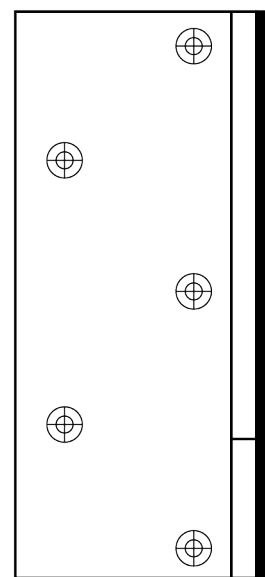
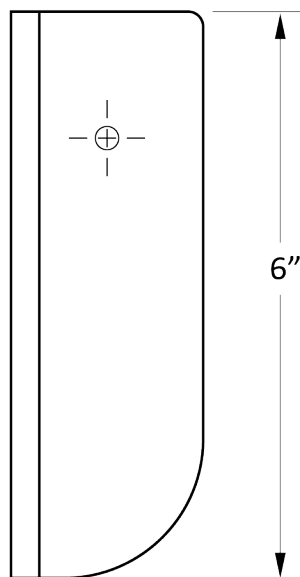
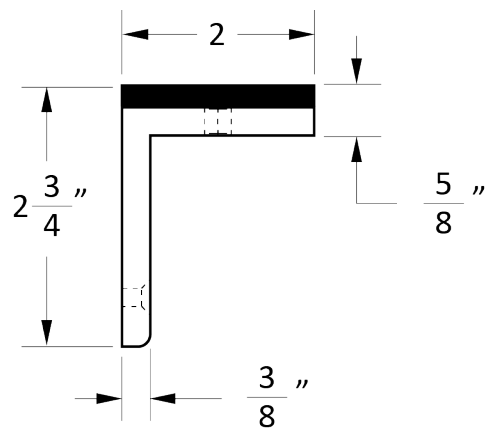
Available upon request, specify LR-SHOE



Tapcon® Anchor screws included:
Each screw has a pullout strength of 1,090lbs and a shear strength of 860lbs.

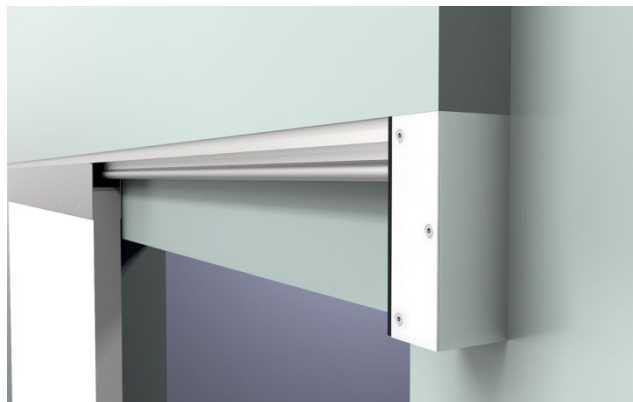
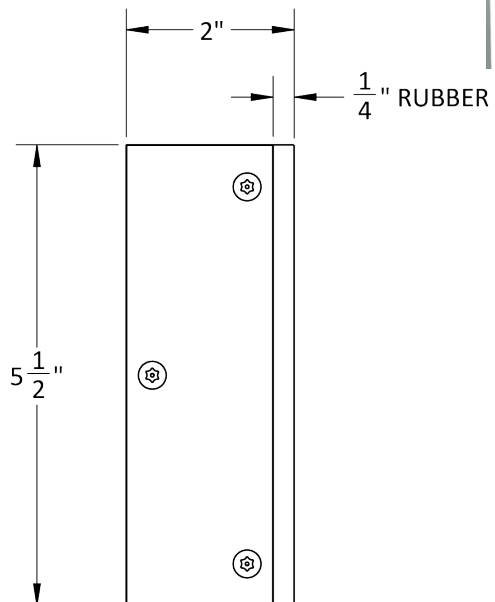
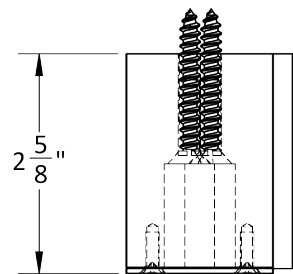
LR-SDS-Stop Kit A (Angle)

Available upon request, specify Stop Kit A.



LR-SDS-Stop Kit B (Block)

Available upon request, specify Stop Kit B.



LR-SDS: Fast Frame Kit

Available upon request, specify FF

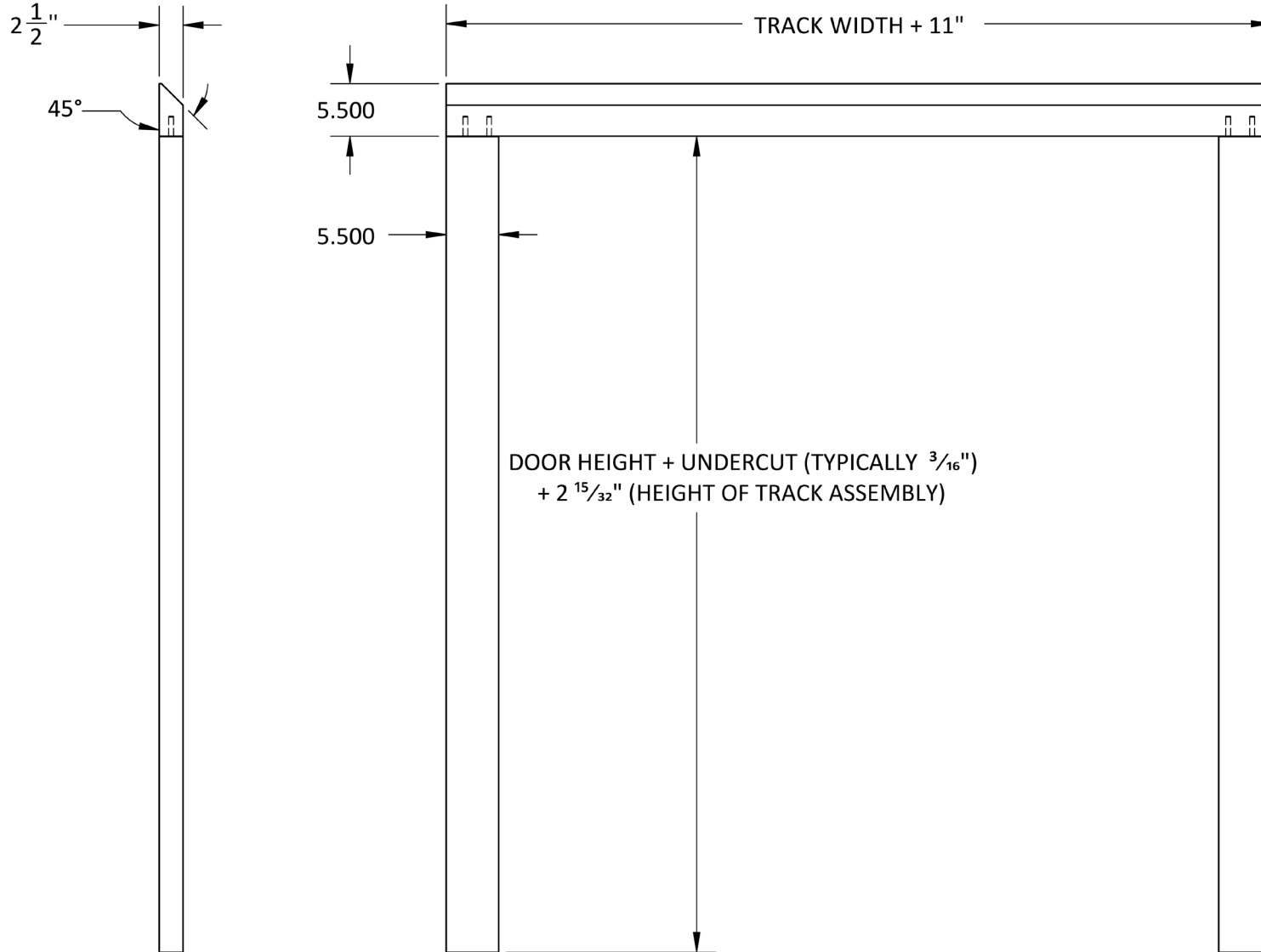


FAST FRAME KIT

- Includes: 2 side rails, 1 top rail
- Allows 2 people to install the door in approximately 20 minutes
- Once simple blocking has been added to the wall studs surrounding the door, side rails can be installed first, followed by the time frame with track
- Results in a seamless frame around the door

LR-SDS: Fast Frame Kit Specs

Available upon request, specify FF



LR-SDS: Sliding Door Transom

Available upon request, specify LR-SDS-TRANSOM

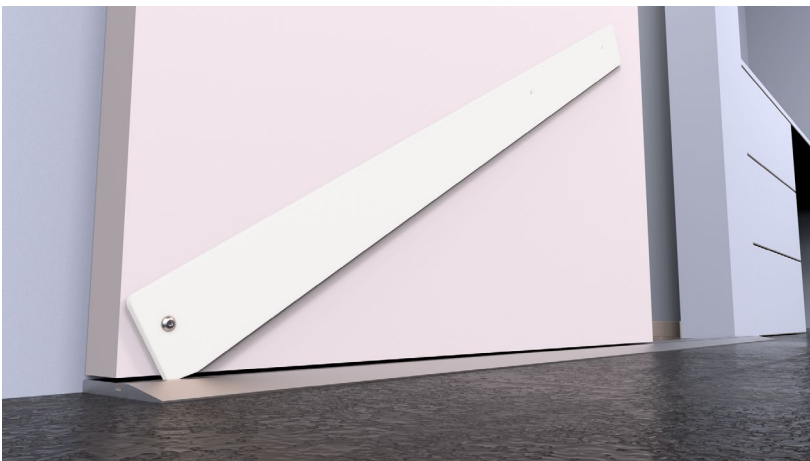


SLIDING DOOR TRANSOM

The transom closes the bottom gap and provides support to guide the door making it a safer opening.

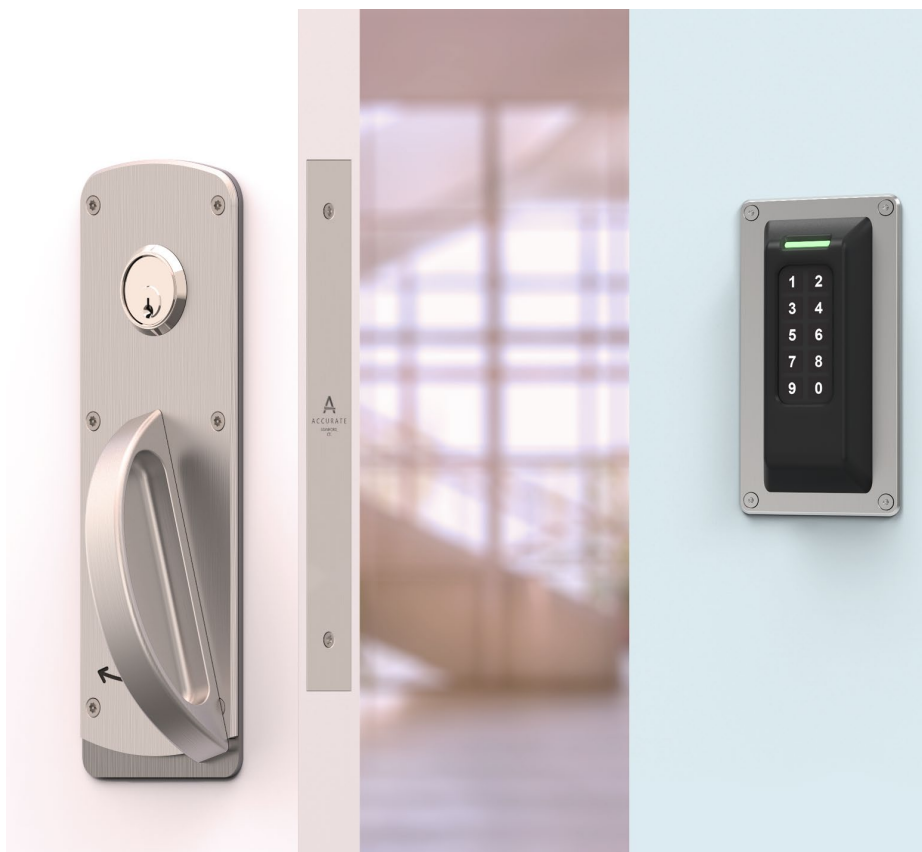
LR-SDS: Sliding Door Transom

Available upon request, specify LR-SDS-TRANSOM



Specialty Applications

ELECTRIFIED SOLUTION | SL-LR-SDS-CH M9159E



Ligature resistant handle inside always free to retract latch.

Electronic operation will unlock outside handle.

Key cylinder (by others) will override electronics.

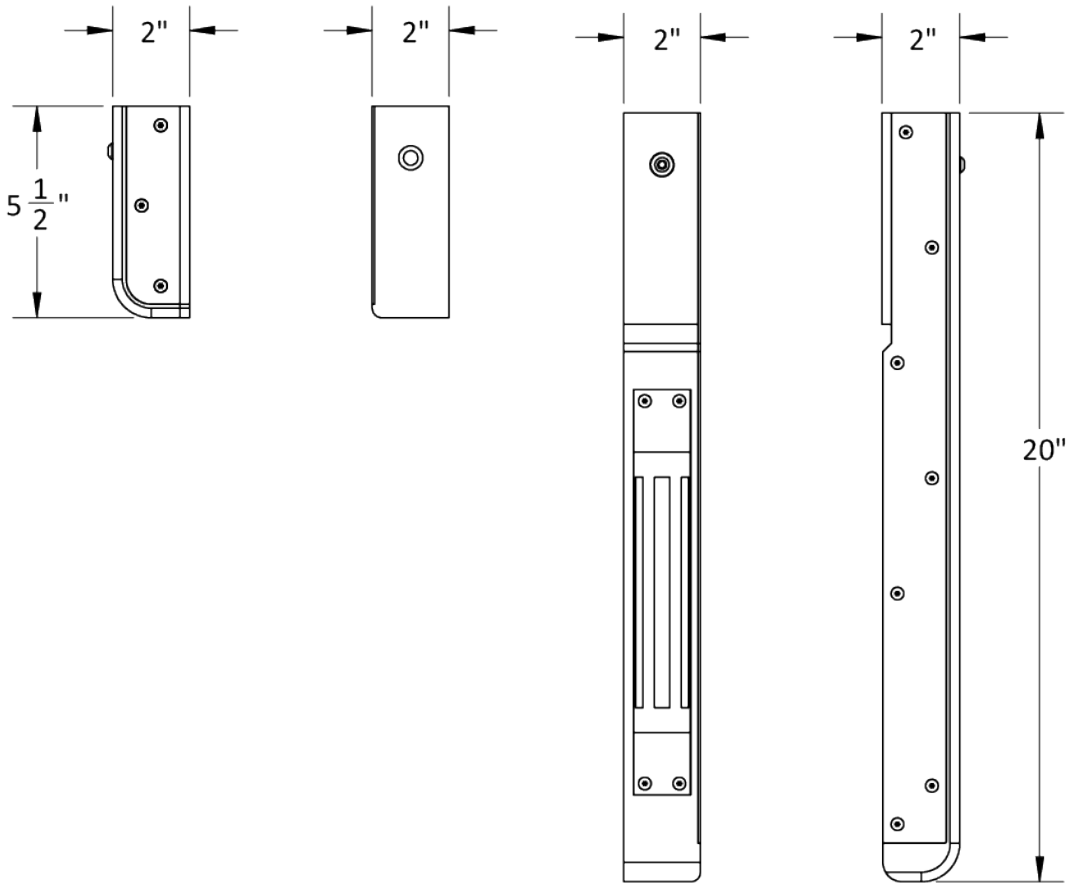
Solution includes:

- Ligature resistant track with Top Door Mount System (door to be supplied by others)
- SL-M9159ECVR Self-latching Electrified Concealed Vertical Rod Sliding Door Latch – backset to be determined based on opening details (min. 3-3/4" backset required)
- LR-SDS-CH-B Crescent Handle Inside (or flush handle if overlaps do not allow surface mounted trim)
- LR-SDS.CH-C Crescent Handle outside with cylinder cutout (mortise cylinder to be provided by others)

Other access control components (including card reader) to be supplied by others.

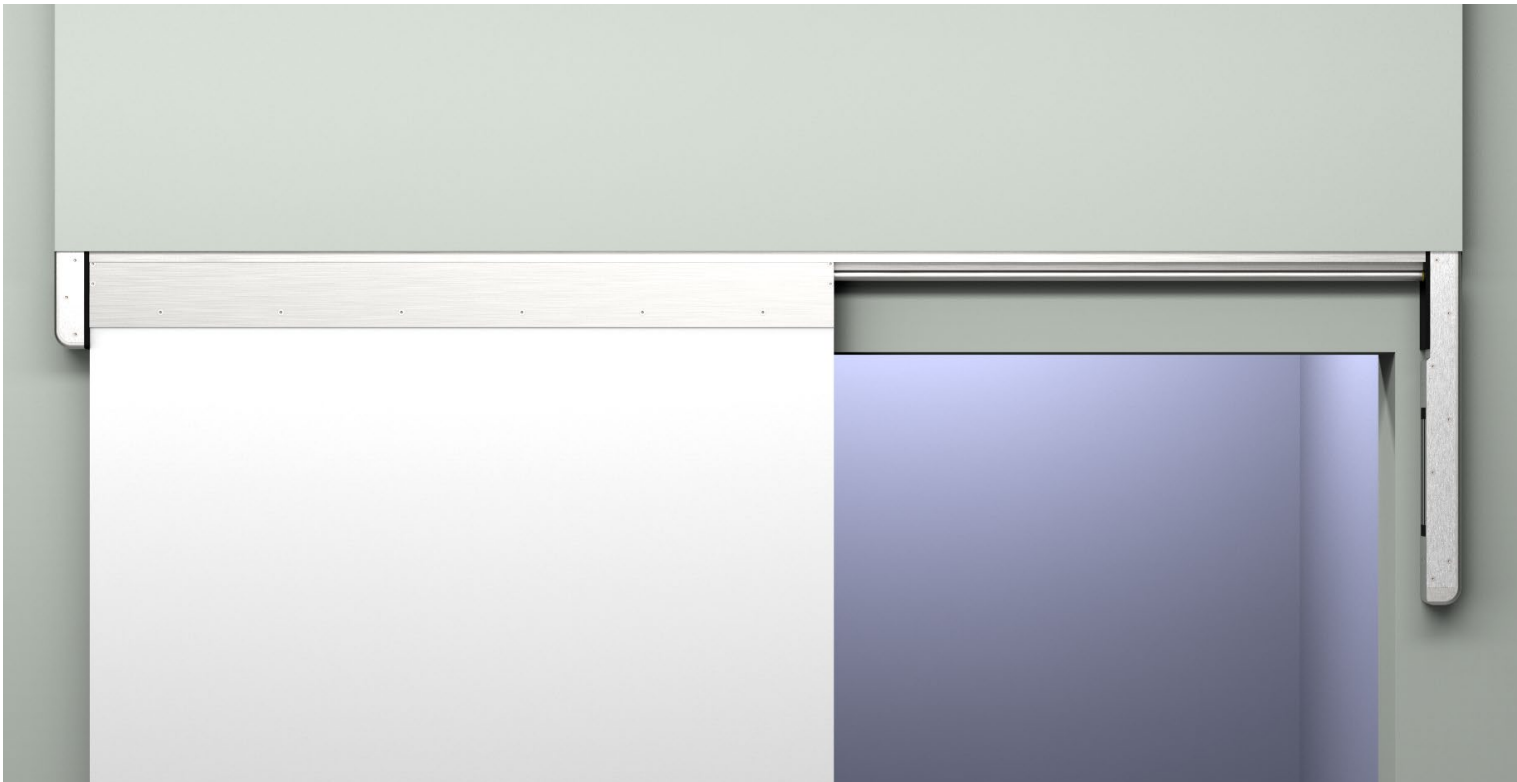
LR-MLS Stop Kit

Available for use with M34R Mag Lock



LR-MLS Stop Kit

Available for use with M34R Mag Lock







LR-SDS MANDATORY ONSITE SERVICE PACKAGES

Ligature-resistant products are manufactured with exceptionally tight tolerances, exceeding typical commercial-grade hardware standards. Proper installation of the LR-SDS and all patient safety door hardware is essential to preserve their safety features and ligature-resistant properties. All installation instructions, including detailed notes on door preparation, must be strictly followed. Deviating from these instructions can compromise the product's performance and create risks for staff, patients, visitors, and other occupants.

Based on this premise, we offer ONSITE Installation assistance and supervision. Required for warranty to be issued.

WARRANTY VALIDATION*	RISK LEVEL	INSTALLATION SERVICE OPTIONS
	LOW	Installation Supervision and Training <i>Includes installation inspection.</i> <i>Warranty issued after inspection and covers one additional year.</i>
	HIGH	Installation Inspection

All of the above are available, provided unlimited access and no labor restrictions.

*Warranty Validation is granted only following the onsite inspection by Accurate AND is subject to the Commissioning/Approval by Accurate that the installation is in line with the required standards.

An integration technician should be onsite to manage electrified components.

How to Specify

LR-SDS-X.FINISH.DOOR THICKNESS.DOOR TYPE.DOOR WIDTH.OPTIONS

FUNCTIONS

See (pg 4-5)

FINISH

Standard
US26D/US32D.

Call for assistance with
other architectural
finishes

DOOR THICKNESS

Standard 1³/₄" doors

DOOR TYPE

Wood or
Hollow Metal

DOOR WIDTH

Door recommended
minimum 10" wider
than the opening (pg.
7-8)

Specify:

- LR-SHOE
- Stop Kit A, B or LR-MLS
- FF Fast Frame Kit
- LR-SDS-TRANSOM
- Special Requests

EXAMPLES

LR-SDS | Passage | Angled Stop Kit

E.g. LR-SDS-0.US26D.134.WOOD.44.STOPKITA

LR-SDS | Double Cylinder Deadlock | Fast Frame Kit

E.g. LR-SDS-9502.US26D.134.WOOD.44.FF

LR-SDS | Classroom Deadlock

E.g. LR-SDS-9503ST.US26D.134.METAL.44

ACCURATE LOCK & HARDWARE
MANUFACTURERS OF LOCKS AND
CUSTOM ARCHITECTURAL HARDWARE

1 Annie Place | Stamford, CT 06902

P: 203.348.8865

F: 203.348.5234

E: sales@accuratelockandhardware.com

www.accuratelockandhardware.com

AMERICAN CRAFTED
— SINCE 1972 —