



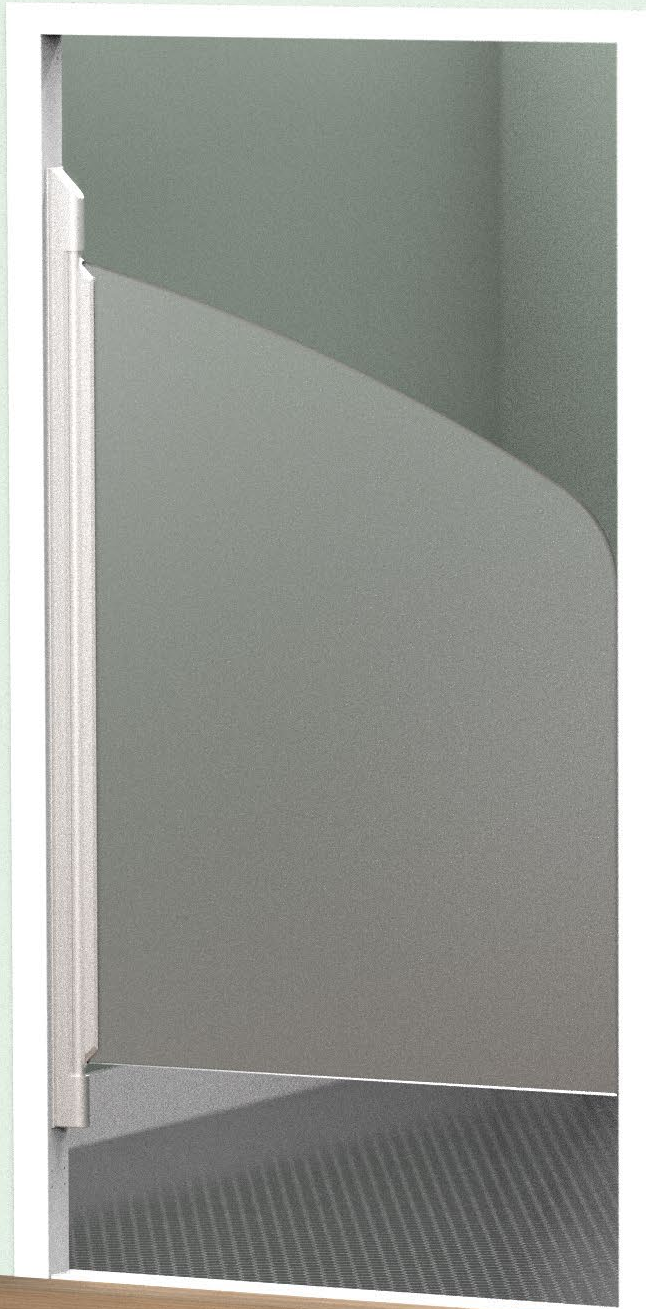
ACCURATE

LOCK & HARDWARE

AMERICAN CRAFTED SINCE 1972

LR-SW LIGATURE RESISTANT SWINGING DOOR SYSTEM

TO PROVIDE SAFETY + PRIVACY FOR PATIENT BATHROOMS



LR-SW SWINGING DOOR SYSTEM

Designed to be a heavy-duty, cost-effective solution that provides increased safety and privacy in the bathroom. This patented swinging door solution can hold over 300lbs of weight and operates without springs, which removes possible ligature points and allows the door to swing in both directions. It can open to 90° in either direction, stay open by design, and when moved to approximately 60° will self-close centered to the opening.

LR SWINGING DOOR

TOP VIEW



BOTTOM VIEW

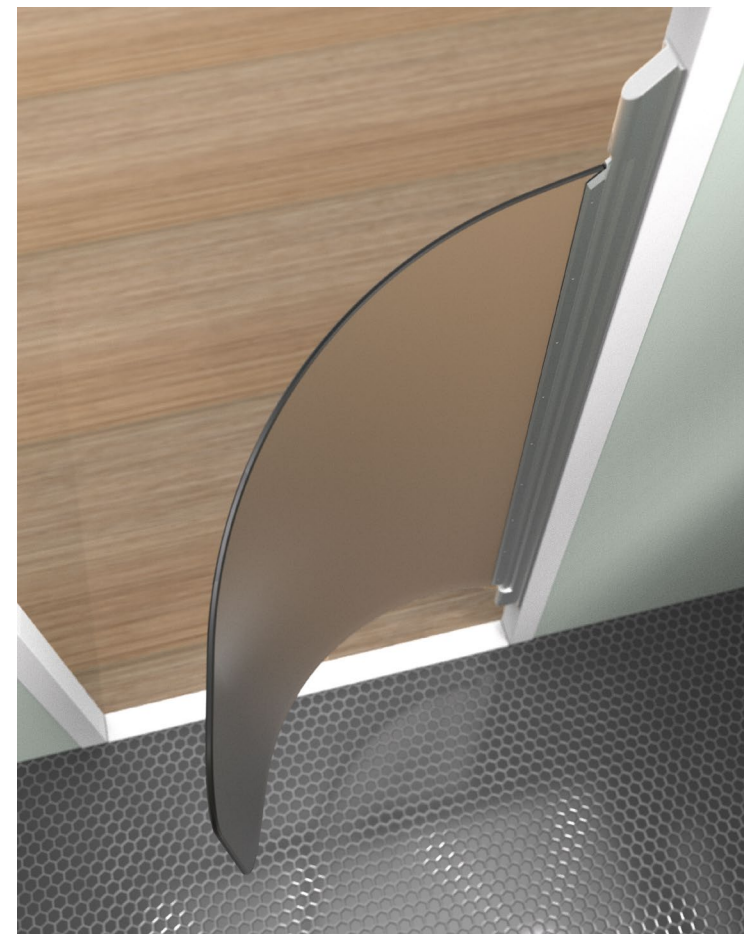


LR SWINGING DOOR

DOOR CAN STAY IN OPEN POSITION AND IS FLEXIBLE
TO FURTHER PREVENT LIGATURE RISKS



[WATCH THE VIDEO](#)



LR-SW DOOR OPTIONS

- The LR-SW system is ideal for en suite bathroom doors and can be customized for shower applications.
- To designate a shower door application, simply add “.SH” to the part number (e.g. LR-SW.36.FP125.SH). This ensures the system includes anodized aluminum, hard-coated components, and a stainless steel rod for durability.
- For proper installation, specify the hinge surface to ensure the correct fasteners are provided (e.g., TAPCON screws for concrete installations).

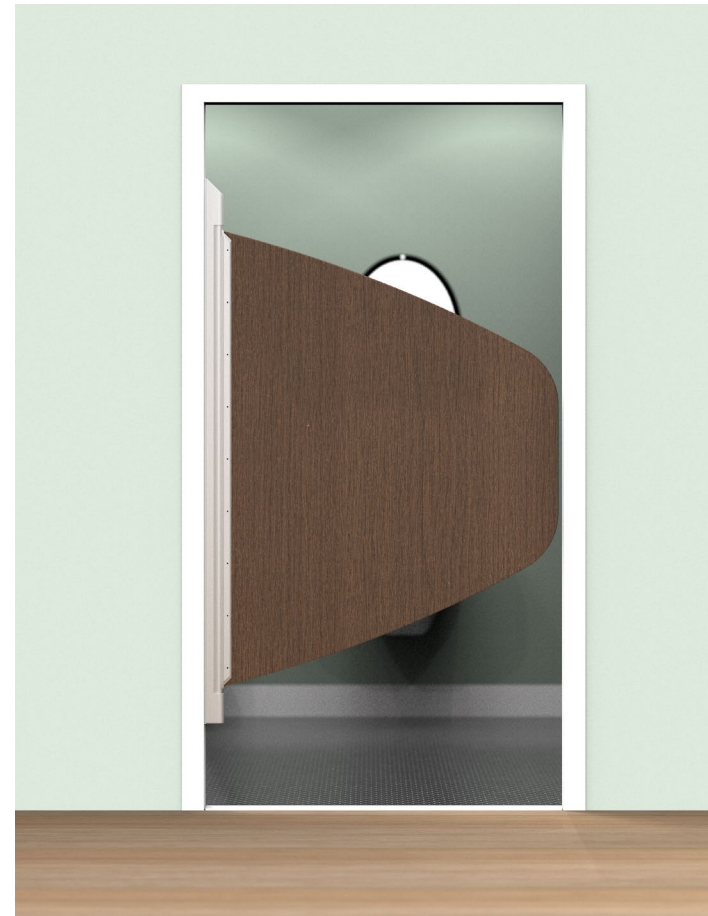


LR-SW DOOR OPTIONS

FROSTED POLYCARBONATE (Standard)



WOOD GRAIN (Simulated Wood Finish Option on Plastic Shown)



LR-SW FOR POSITIVE DISTRACTION

HDPE PLASTIC COLOR OPTIONS



Any HDPE plastic door option can act as one large interactive panel offering a positive distraction. Patients can draw on the door with marker to personalize their own space. The door can be easily wiped clean with rubbing alcohol and a cloth.

[WATCH THE VIDEO](#)



LR-SW DOOR OPTIONS

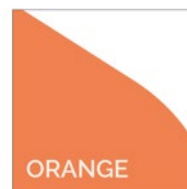
HDPE PLASTIC COLOR OPTIONS

Specify HDPE.COLOR

E.g. HDPE.BLUE



RED



ORANGE



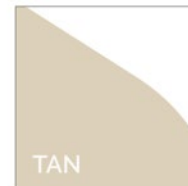
YELLOW



GREEN



BLUE



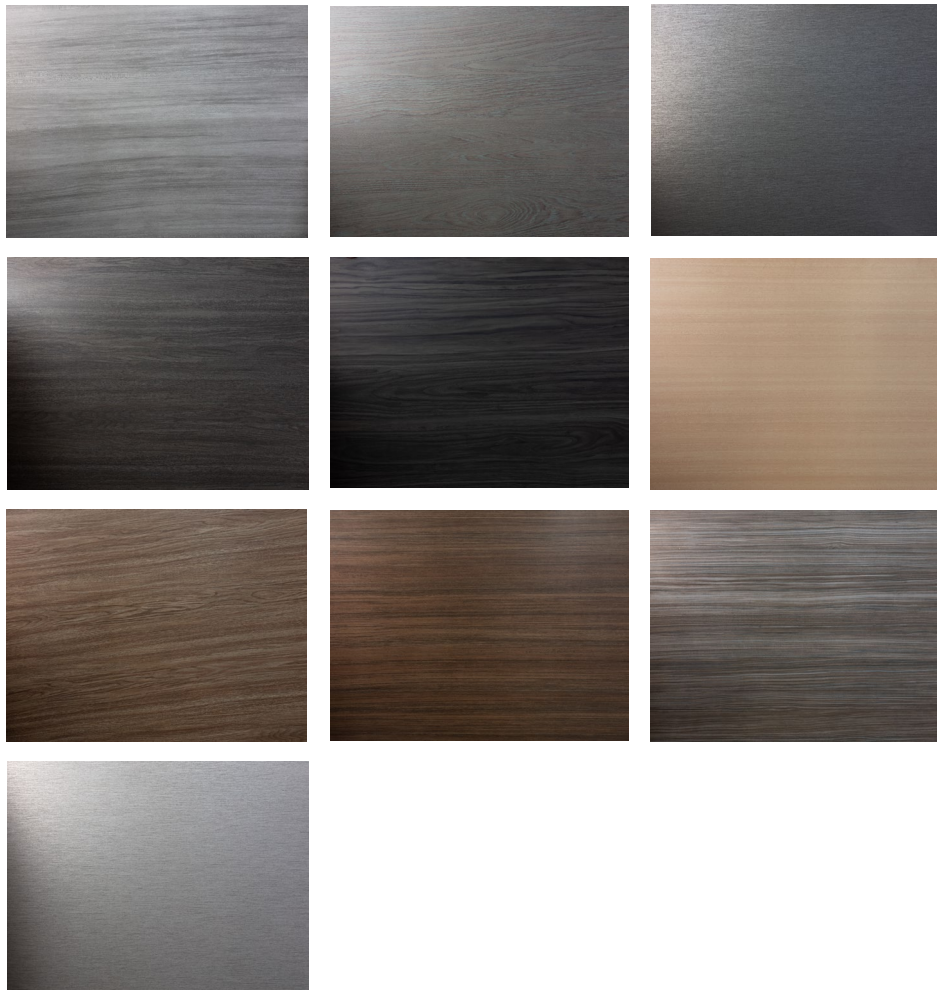
TAN



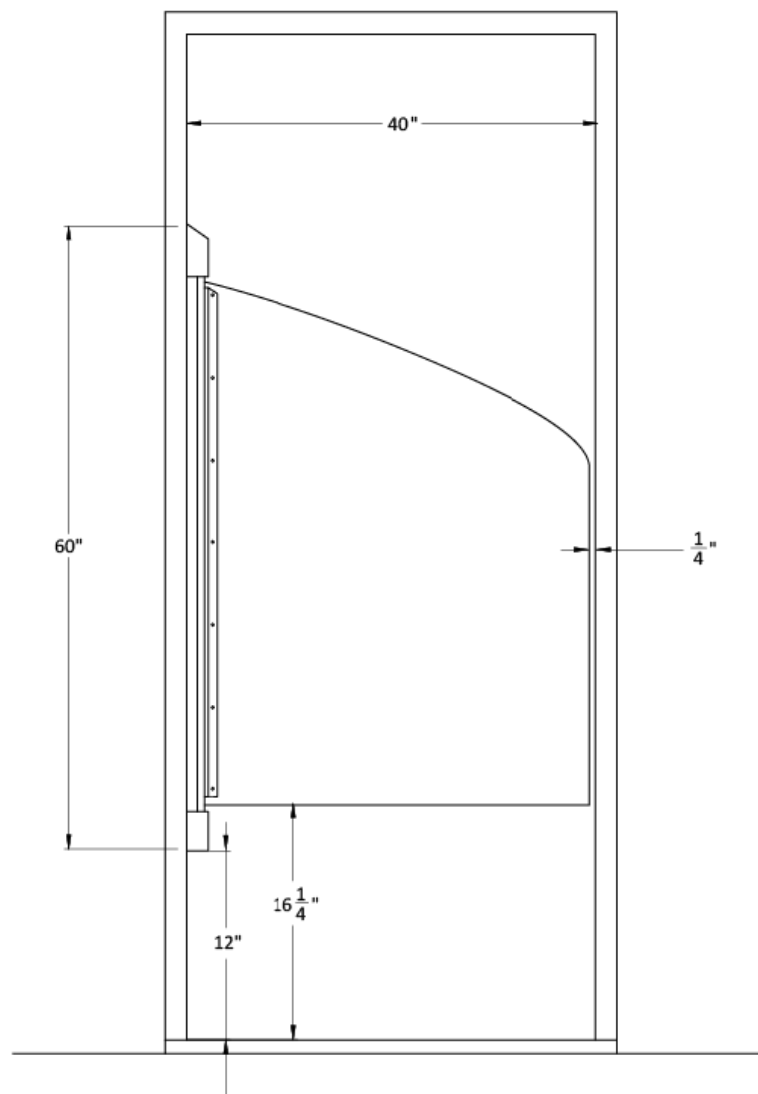
BLACK

LR-SW DOOR OPTIONS

Now featuring Acrovyn® Woodgrain to achieve
a biophilic aesthetic for the entire door.

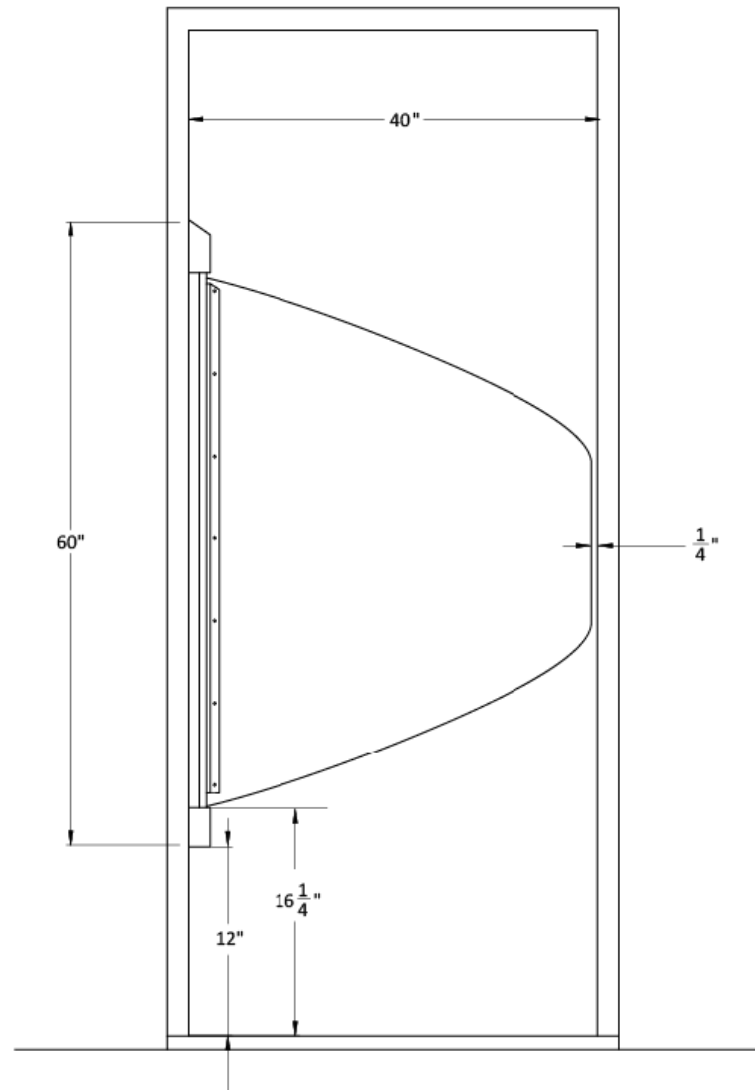


LR-SW EXAMPLE DIMENSIONS



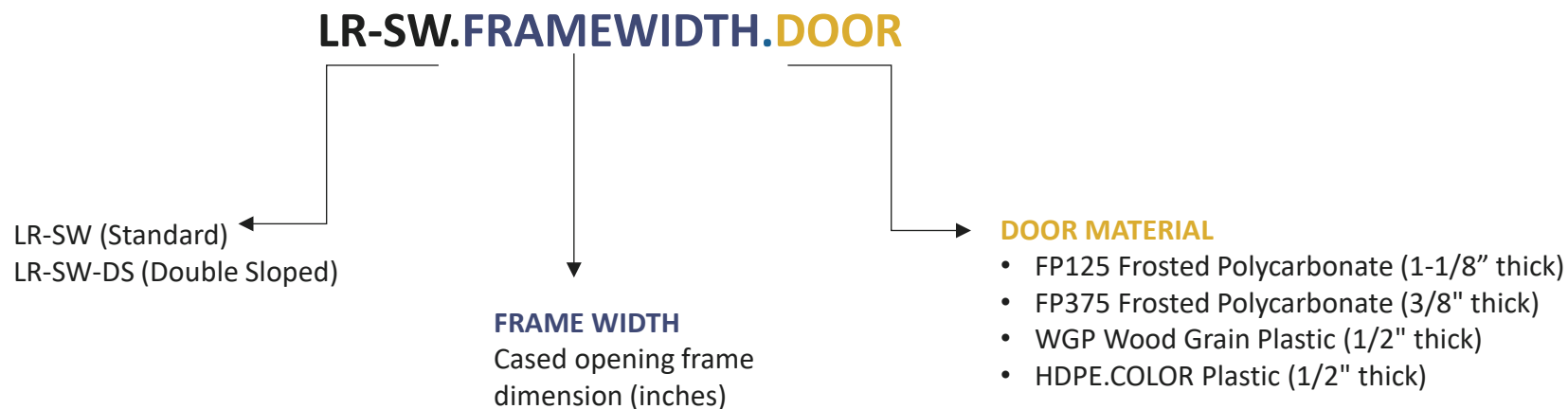
Other door heights are available,
please call for assistance.

LR-SW-DS EXAMPLE DIMENSIONS



Other door heights are available,
please call for assistance.

HOW TO SPECIFY



EXAMPLES

LR-SW | Frosted Polycarbonate Standard

E.g. LR-SW.36.FP375

LR-SW-DS | Frosted Polycarbonate Double Slope Door

E.g. LR-SW-DS.36.FP125

LR-SW | HDPE Plastic Door Color

E.g. LR-SW.40.HDPE.BLUE

LR-SW | Wood Grain Plastic Door

E.g. LR-SW.42.WGP

NOTES

- When using other manufacturers' doors, please specify door thickness (3/4" maximum).
- Custom system heights available, please call for assistance.
- The top of the door can be crowned, square or customized to meet specifications.
- Optional Crescent Pull, please call for assistance.

ACCURATE LOCK & HARDWARE
MANUFACTURERS OF LOCKS AND
CUSTOM ARCHITECTURAL HARDWARE

1 Annie Place | Stamford, CT 06902

P: 203.348.8865

F: 203.348.5234

E: sales@accuratelockandhardware.com

www.accuratelockandhardware.com

AMERICAN CRAFTED
— SINCE 1972 —