



# ACCURATE

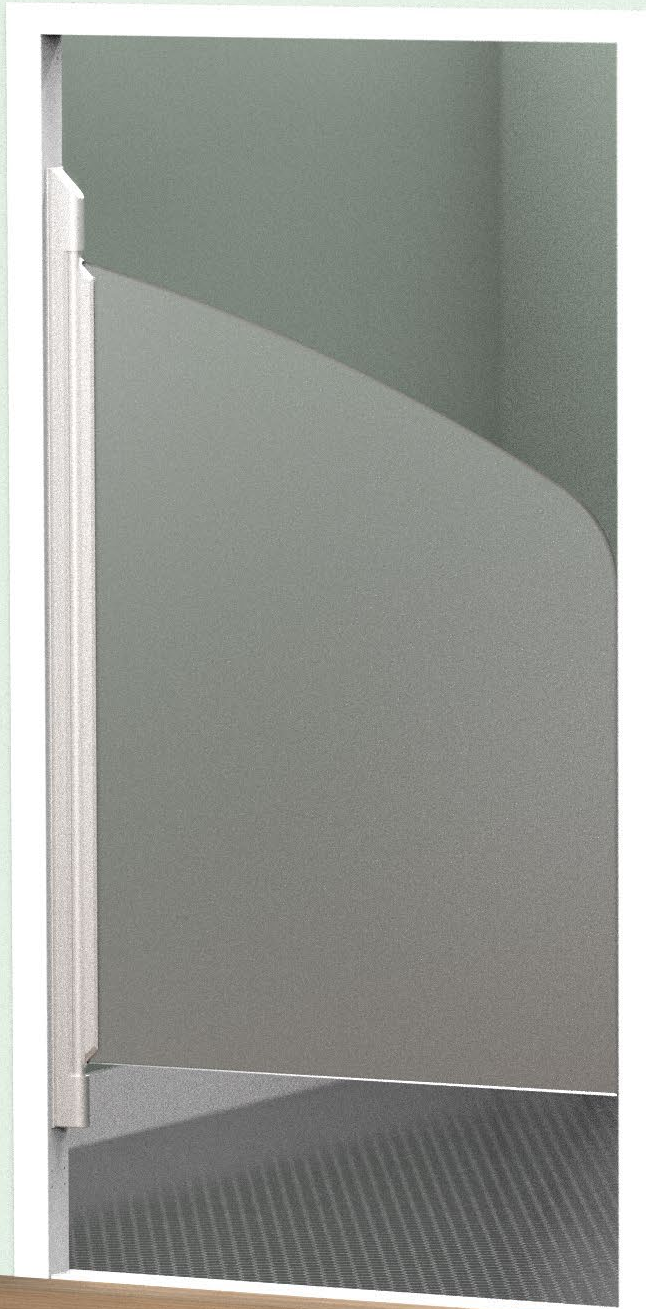
## LOCK & HARDWARE

AMERICAN CRAFTED SINCE 1972

---

# LR-SW LIGATURE RESISTANT SWINGING DOOR SYSTEM

TO PROVIDE SAFETY + PRIVACY FOR PATIENT BATHROOMS



## LR-SW SWINGING DOOR SYSTEM

Designed to be a heavy-duty, cost-effective solution that provides increased safety and privacy in the bathroom. This patented swinging door solution can hold over 300lbs of weight and operates without springs, which removes possible ligature points and allows the door to swing in both directions. It can open to 90° in either direction, stay open by design, and when moved to approximately 60° will self-close centered to the opening.



# LR SWINGING DOOR

TOP VIEW



BOTTOM VIEW

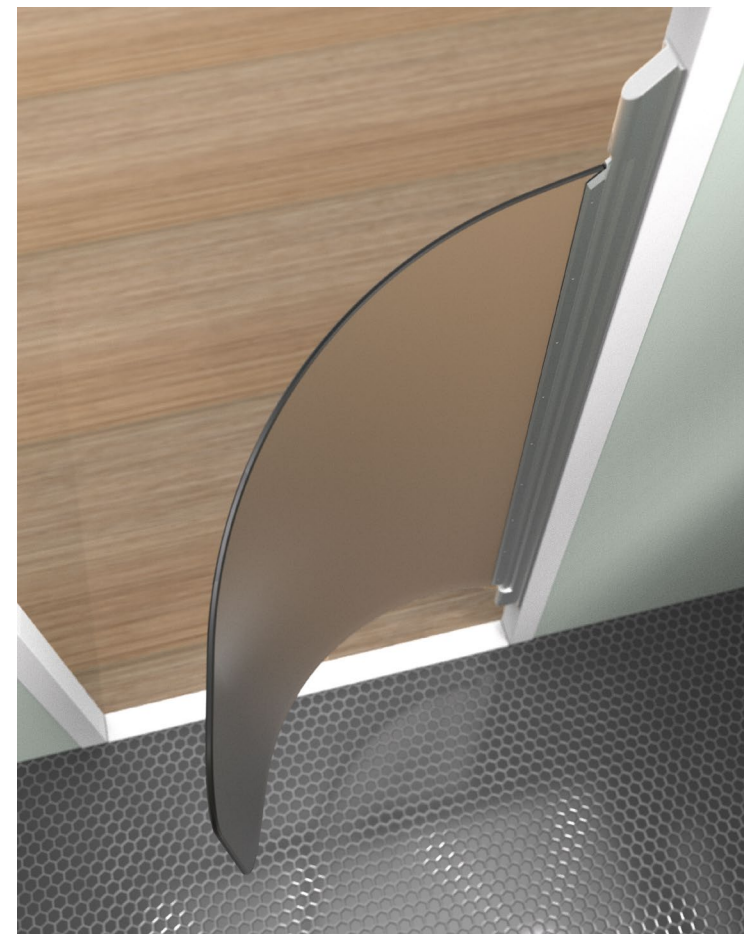


# LR SWINGING DOOR

DOOR CAN STAY IN OPEN POSITION AND IS FLEXIBLE  
TO FURTHER PREVENT LIGATURE RISKS



[WATCH THE VIDEO](#)



# LR-SW DOOR OPTIONS

- The LR-SW system is ideal for en suite bathroom doors and can be customized for shower applications.
- To designate a shower door application, simply add “.SH” to the part number (e.g. LR-SW.36.FP125.SH). This ensures the system includes anodized aluminum, hard-coated components, and a stainless steel rod for durability.
- For proper installation, specify the hinge surface to ensure the correct fasteners are provided (e.g., TAPCON screws for concrete installations).

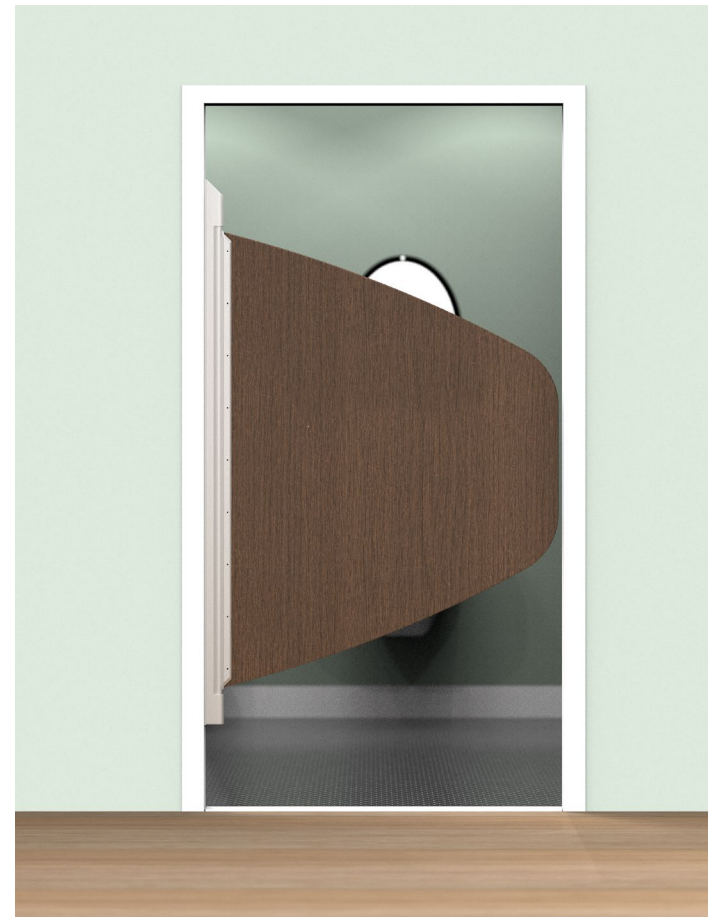


# LR-SW DOOR OPTIONS

## FROSTED POLYCARBONATE (Standard)



## WOOD GRAIN (Simulated Wood Finish Option on Plastic Shown)





# LR-SW FOR POSITIVE DISTRACTION

## HDPE PLASTIC COLOR OPTIONS



Any HDPE plastic door option can act as one large interactive panel offering a positive distraction. Patients can draw on the door with marker to personalize their own space. The door can be easily wiped clean with rubbing alcohol and a cloth.

[WATCH THE VIDEO](#)



# LR-SW DOOR OPTIONS

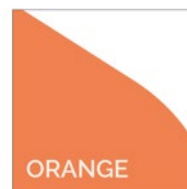
## HDPE PLASTIC COLOR OPTIONS

Specify HDPE.COLOR

E.g. HDPE.BLUE



RED



ORANGE



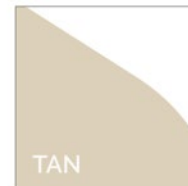
YELLOW



GREEN



BLUE



TAN

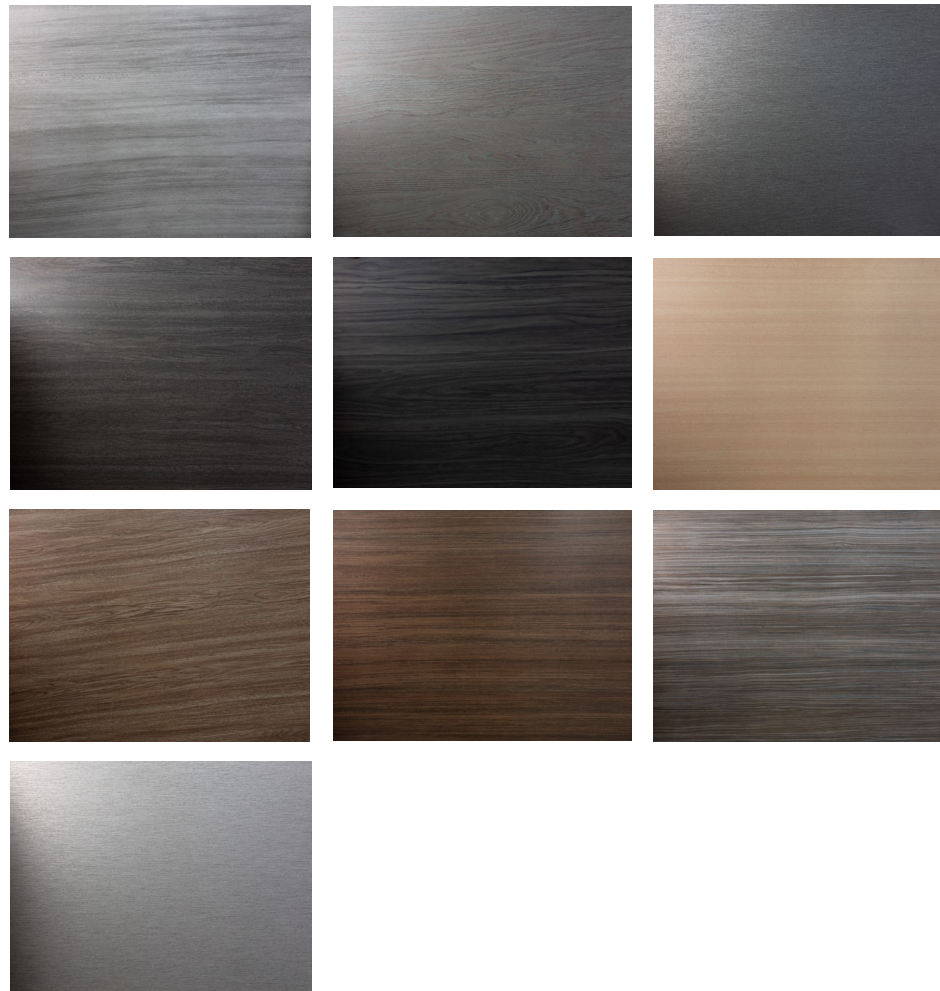


BLACK

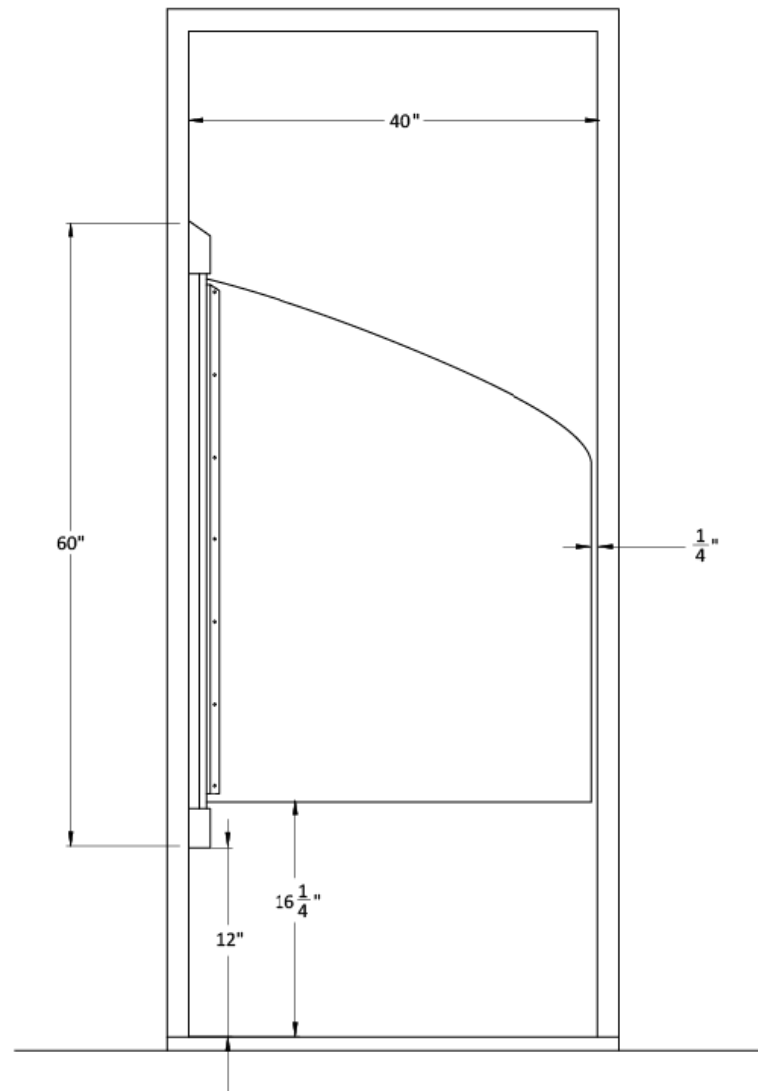


# LR-SW DOOR OPTIONS

Now featuring Acrovyn® Woodgrain to achieve  
a biophilic aesthetic for the entire door.

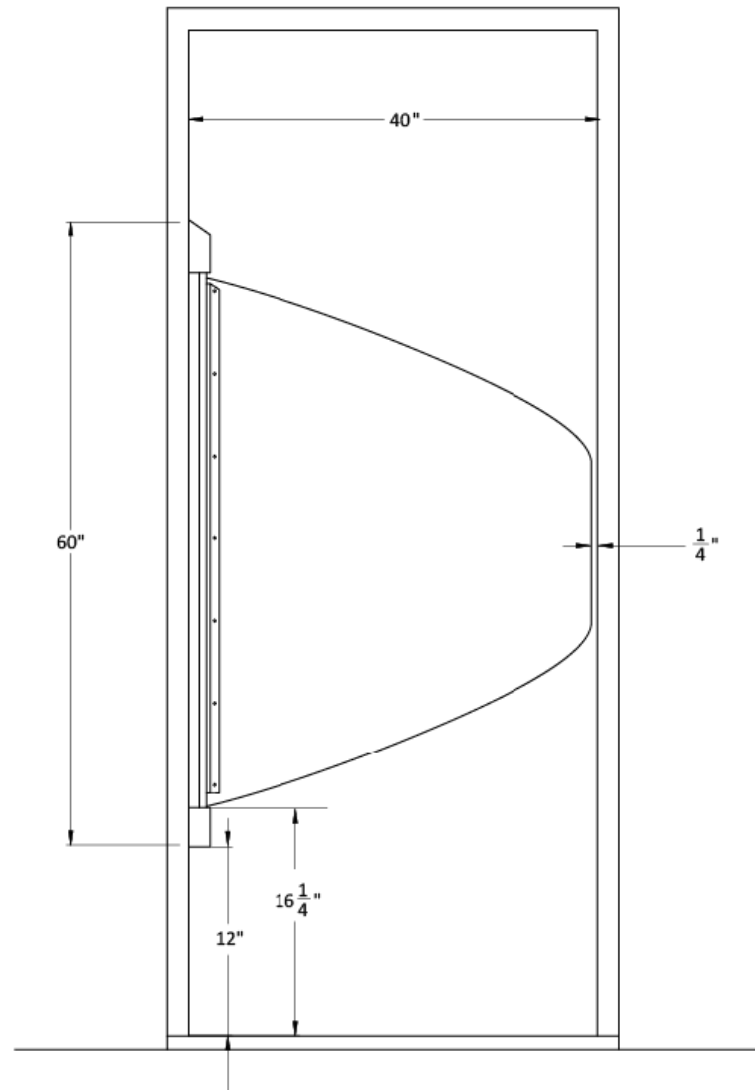


# LR-SW EXAMPLE DIMENSIONS



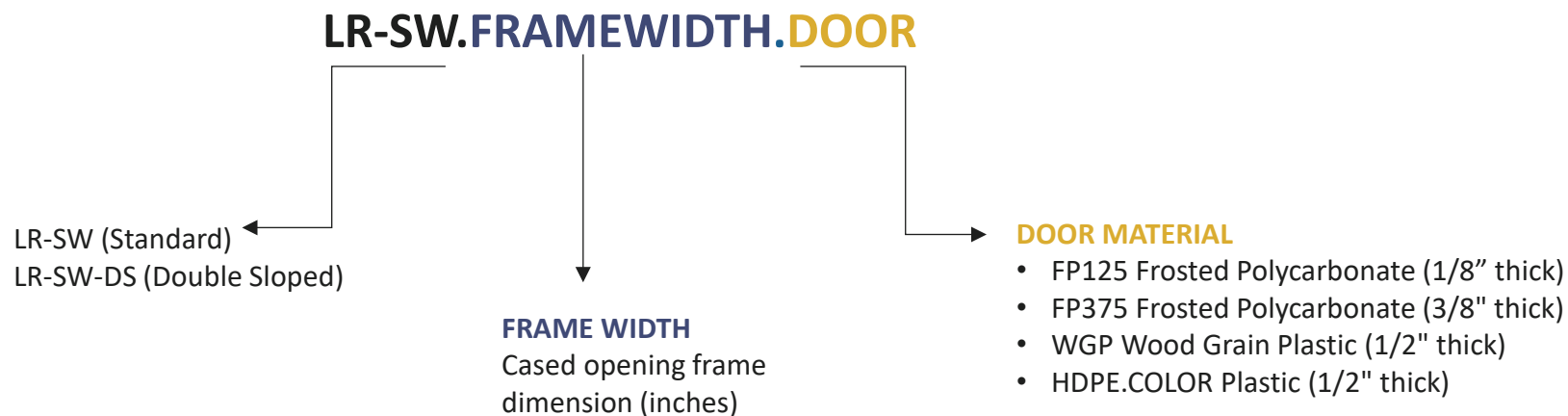
Other door heights are available,  
please call for assistance.

# LR-SW-DS EXAMPLE DIMENSIONS



Other door heights are available,  
please call for assistance.

# HOW TO SPECIFY



## EXAMPLES

**LR-SW | Frosted Polycarbonate Standard**

E.g. LR-SW.36.FP375

**LR-SW-DS | Frosted Polycarbonate Double Slope Door**

E.g. LR-SW-DS.36.FP125

**LR-SW | HDPE Plastic Door Color**

E.g. LR-SW.40.HDPE.BLUE

**LR-SW | Wood Grain Plastic Door**

E.g. LR-SW.42.WGP

## NOTES

- When using other manufacturers' doors, please specify door thickness (3/4" maximum).
- Custom system heights available, please call for assistance.
- The top of the door can be crowned, square or customized to meet specifications.
- Optional Crescent Pull, please call for assistance.



**ACCURATE LOCK & HARDWARE**  
**MANUFACTURERS OF LOCKS AND**  
**CUSTOM ARCHITECTURAL HARDWARE**

1 Annie Place | Stamford, CT 06902

**P:** 203.348.8865

**F:** 203.348.5234

**E:** sales@accuratelockandhardware.com

**www.accuratelockandhardware.com**

**AMERICAN CRAFTED**  
**— SINCE 1972 —**