

SMARTENTRY™

by ACCURATE

SmartEntry™ SM9159E Series Smartphone Mortise Lock

SECURE, CONVENIENT, DESIGN DRIVEN

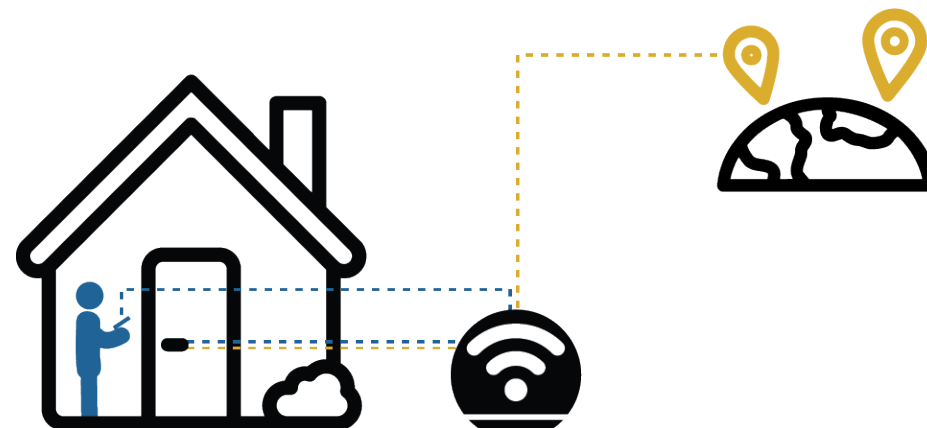
SMARTENTRY™

by ACCURATE

SM9159E SMART MORTISE LOCK

One of the first smartphone-operated systems for mortise locks, the SM9159E combines Accurate's mechanical expertise with industry leading technology. The battery-powered smartlock allows users to integrate directly with standard open-source platforms through a widely adopted protocol called *Matter*, which is a simplified common language for smarthome devices. Keeping design top of mind, this lock is compatible with any style trim and has no exposed electronics.

- All components hidden inside mortise pocket
- Fully customizable – pair with virtually any style architectural trim
- Battery powered for easy installation. Door does not require any wiring
- Lock and unlock the door and grant keyless entry via Smart Home Platform.



SMARTENTRY™

by ACCURATE

3



iOS + Android compatible



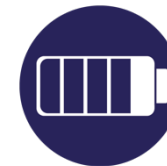
Invite family and friends
to access the lock 24/7 or
on a schedule



Control lock remotely from
anywhere in the world



Compatible with standard
trim configurations (LxL,
TPxK, etc.)

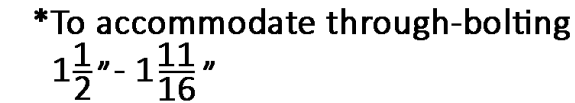


Battery operated with
app indicator

Integrate seamlessly with compatible, industry-leading smarthome devices.

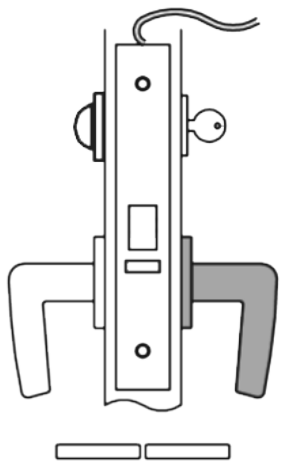


- Apple HomePod Mini
- Apple HomePod
- Apple TV 4K Wifi or Ethernet
- Amazon Echo 4th Generation



*Grade 1 Mortise Lock with anti-friction bolt also available.

SM9159E Series | Operation



OUTSIDE:

Latch by lever outside after handle is unlocked with smart phone. When locked, outside lever will remain locked at all times. Keyed cylinder ONLY retracts the latch. It does NOT lock or unlock the door.

INSIDE:

Latch by lever inside always. Rotating thumb turn locks the outside handle and thumb turn springs back to home position. Thumb turn will NOT unlock the outside lever.

STATUS:

Locked or Unlocked status of lock will show in compatible smart home app (Compatible Apple | Amazon Device). Lock/Unlock ability within app or by voice command as applicable by compatible smart home device.

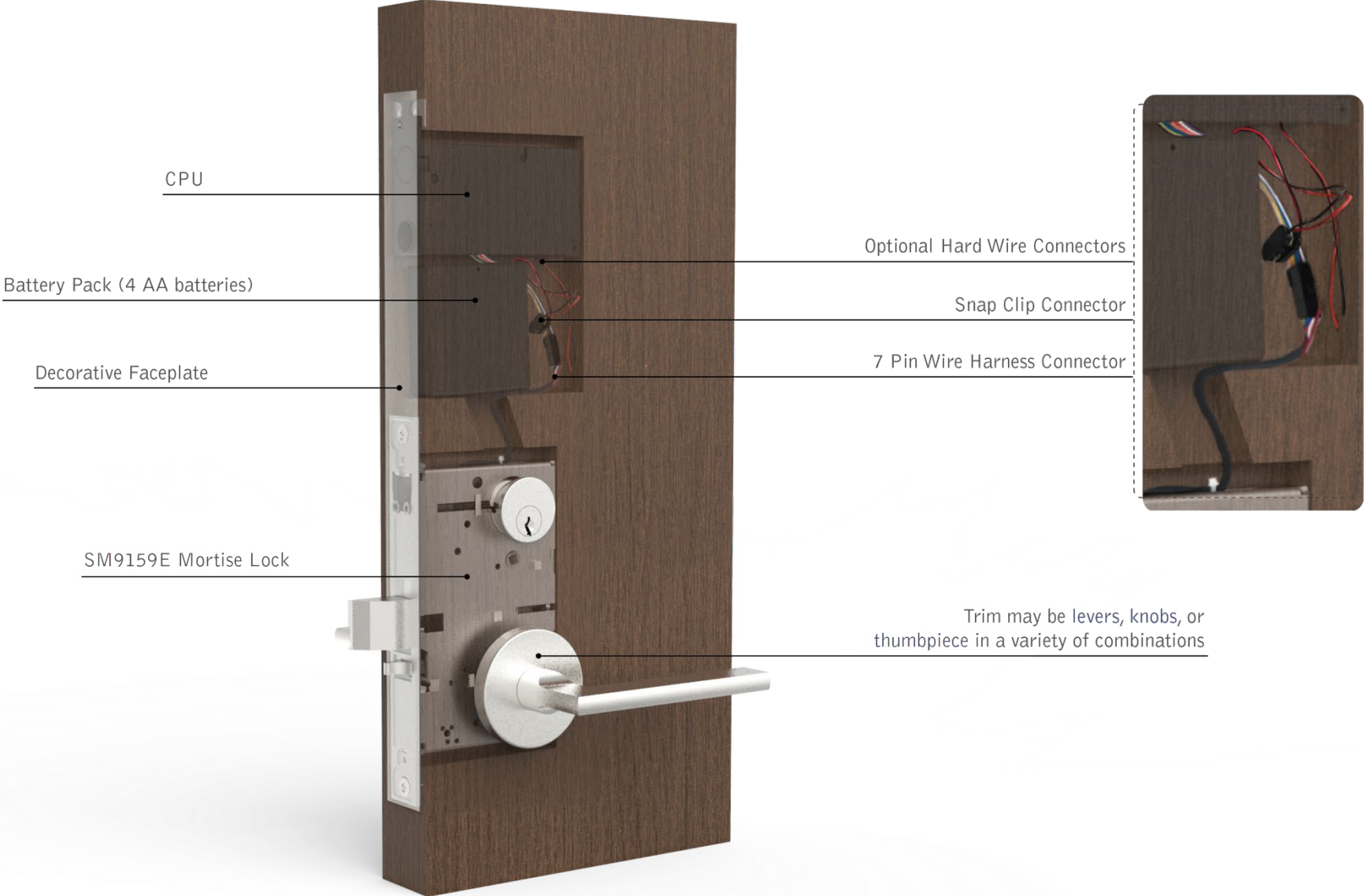
GENERAL NOTES:

The system operates through WIFI with the device connecting to the hub (Compatible Apple | Amazon Device). Provided that the hub is in proximity to the device and on the network, users can operate the lock locally or remotely.

Lock operated by 4 AA batteries with low battery warning in app. To replace the batteries simply remove armor plate on edge of door and access the battery pack.

Lock can also be powered with traditional hard wired power supply up to 24 volts. Please specify if you are using it this way.

SM9159E Series | Components



SM9159E Series | Components

COMPATIBLE DEVICES



iOS + Android compatible



- Apple HomePod Mini
- Apple HomePod
- Apple TV 4K Wifi or Ethernet



- Amazon Echo 4th Generation

Accurate Levers

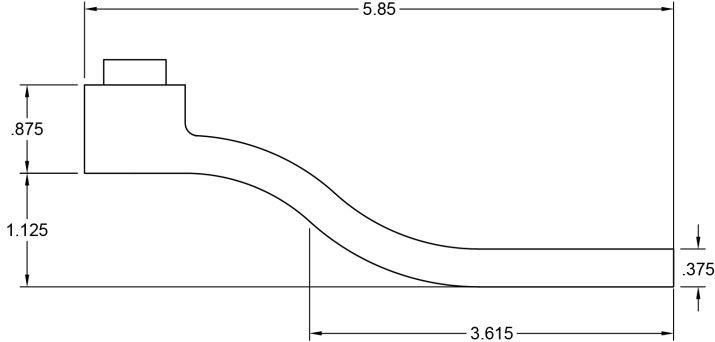
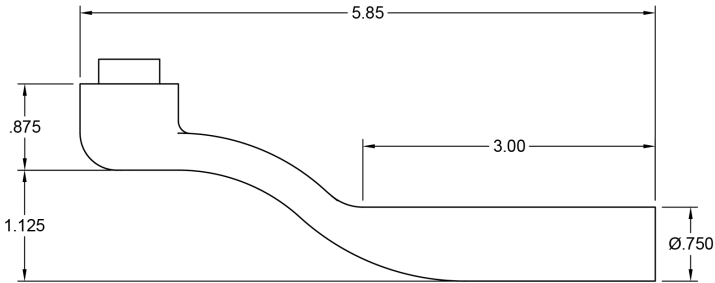
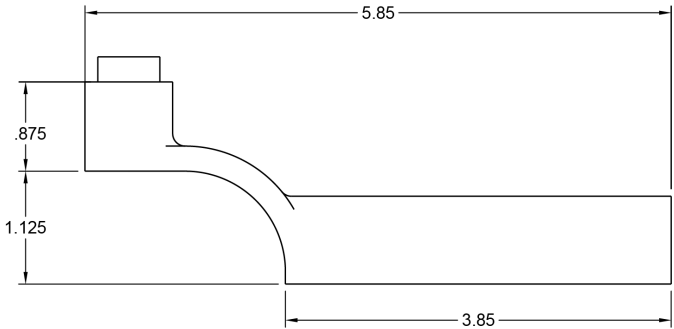
14L LEVER



15L LEVER

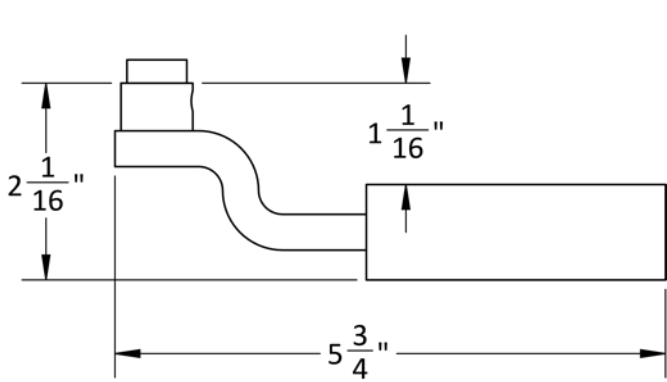
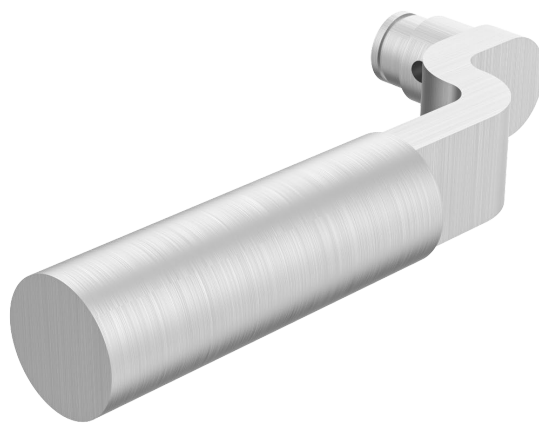


16L LEVER

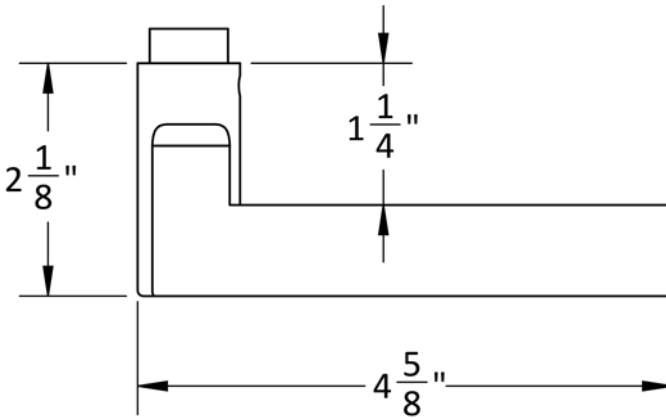


Accurate Levers

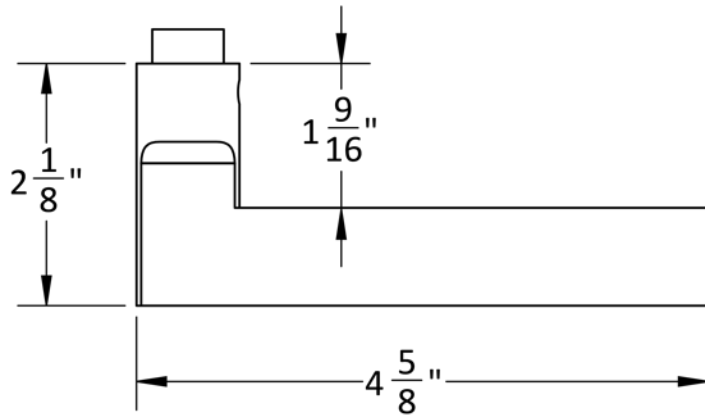
17L LEVER



18L LEVER

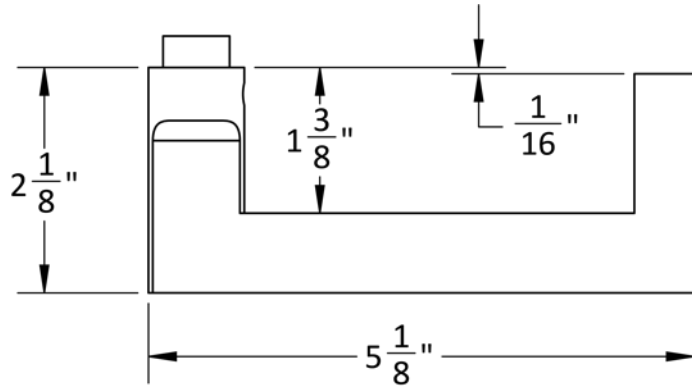
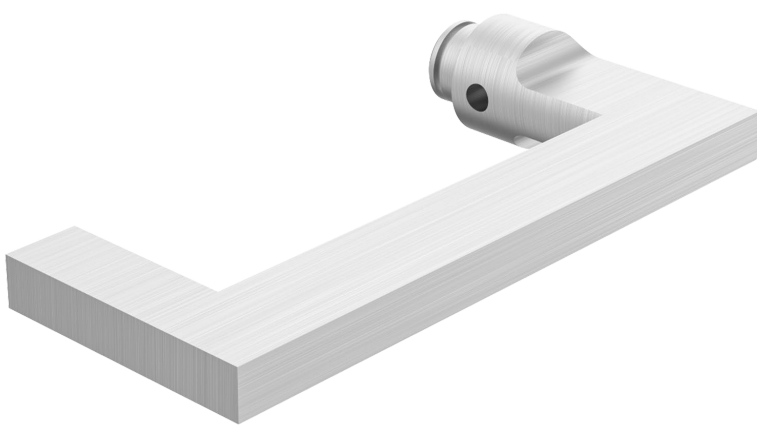


19L LEVER

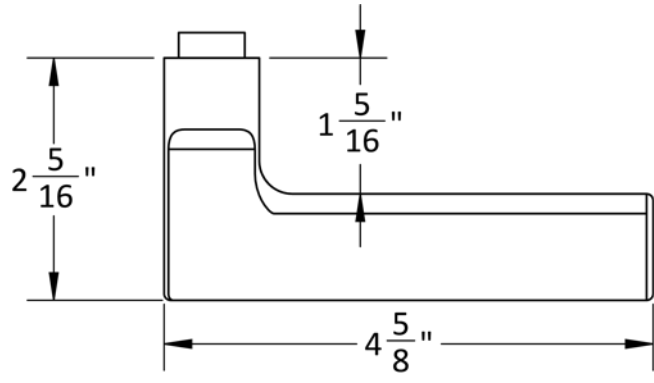


Accurate Levers

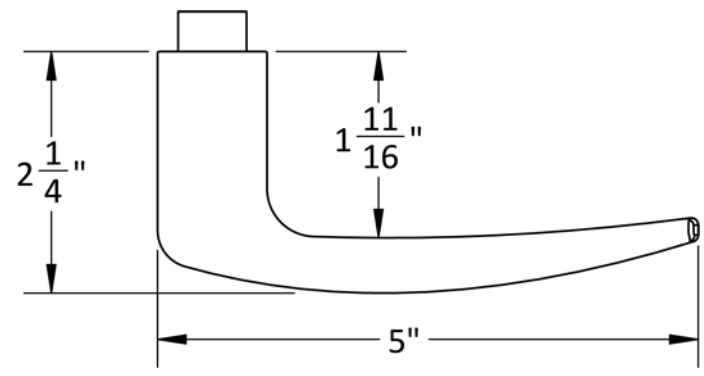
20L LEVER



21L LEVER

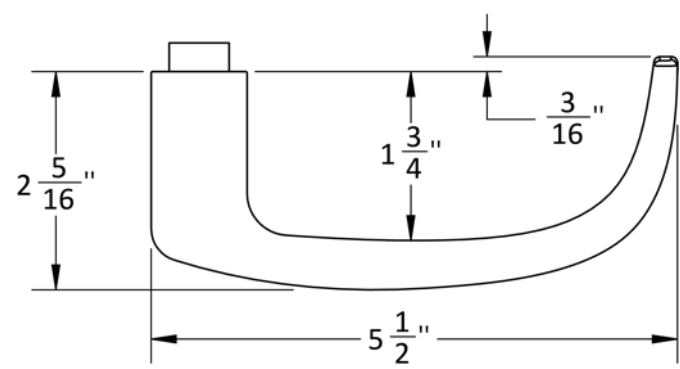


29L LEVER

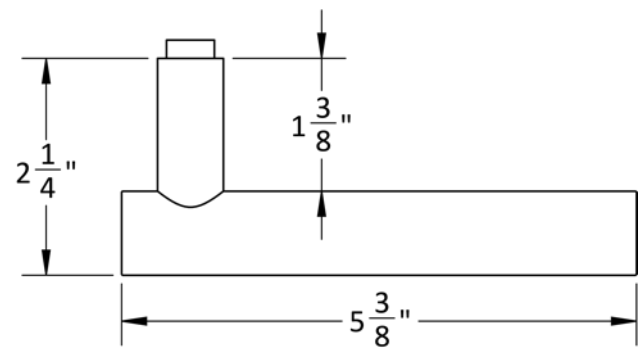


Accurate Levers

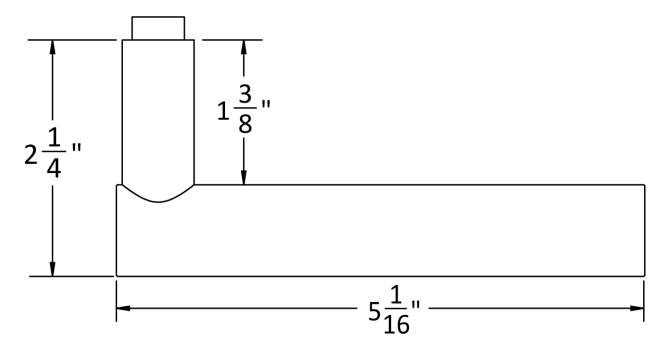
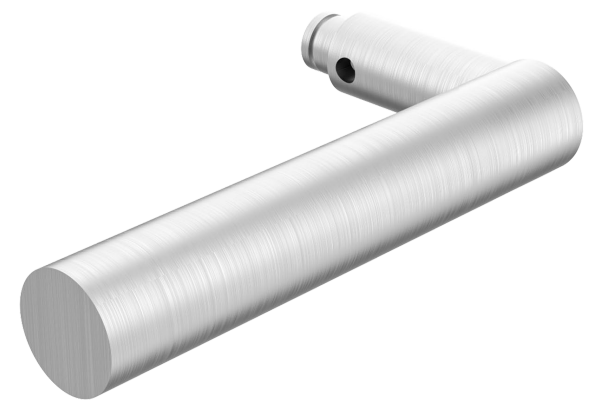
39L LEVER



72L LEVER



74L LEVER



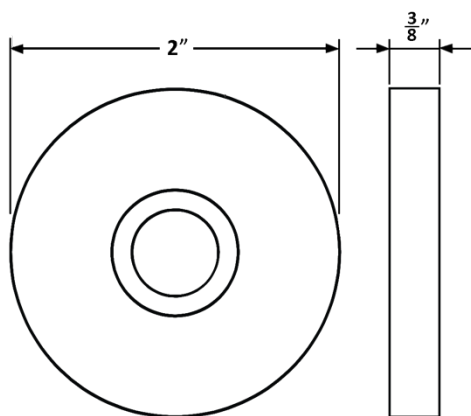
Accurate Sectional Trim: Roses

1R ROSE

Front



Side



SILENTPAC™ LEVER DAMPENING DISC CAN BE
SPECIFIED WITH THE 1R ROSE
VISIT SILENTPACSOLUTIONS.COM

2R ROSE

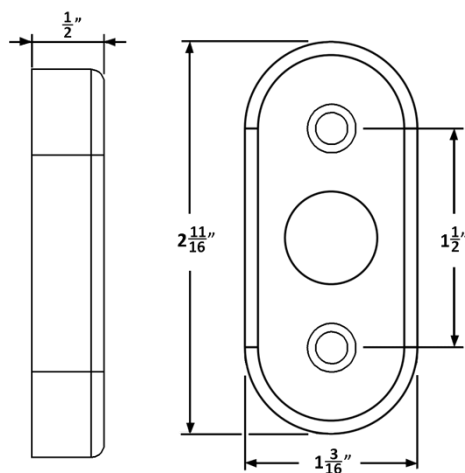
Side



Inside



Outside



4R ROSE

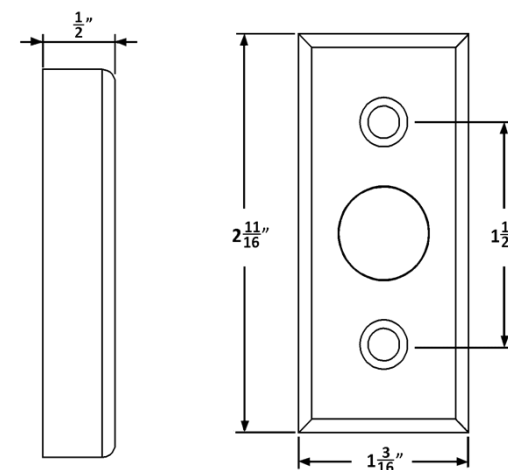
Side



Inside

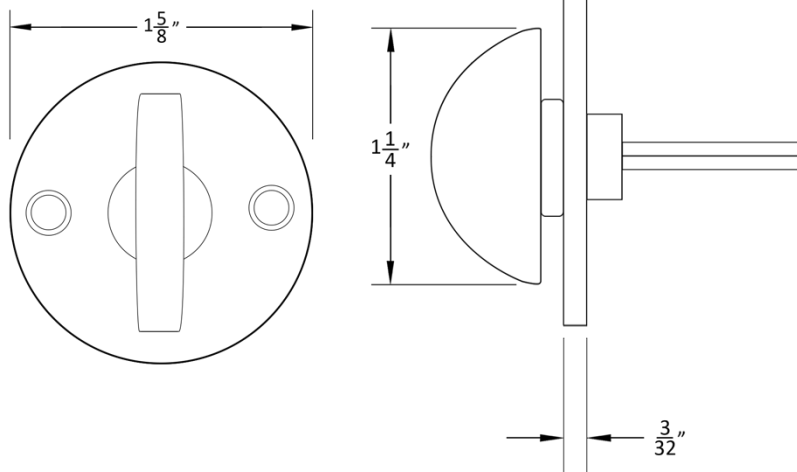


Outside

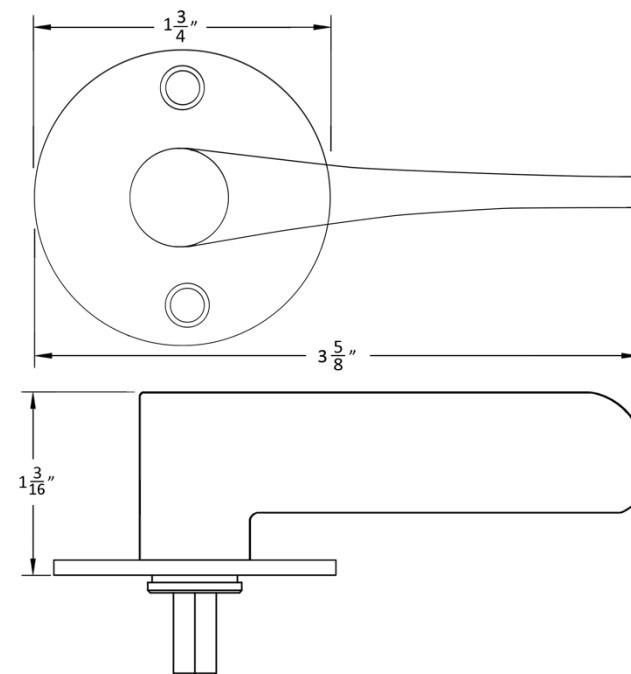


Accurate Sectional Trim: Thumb Turns

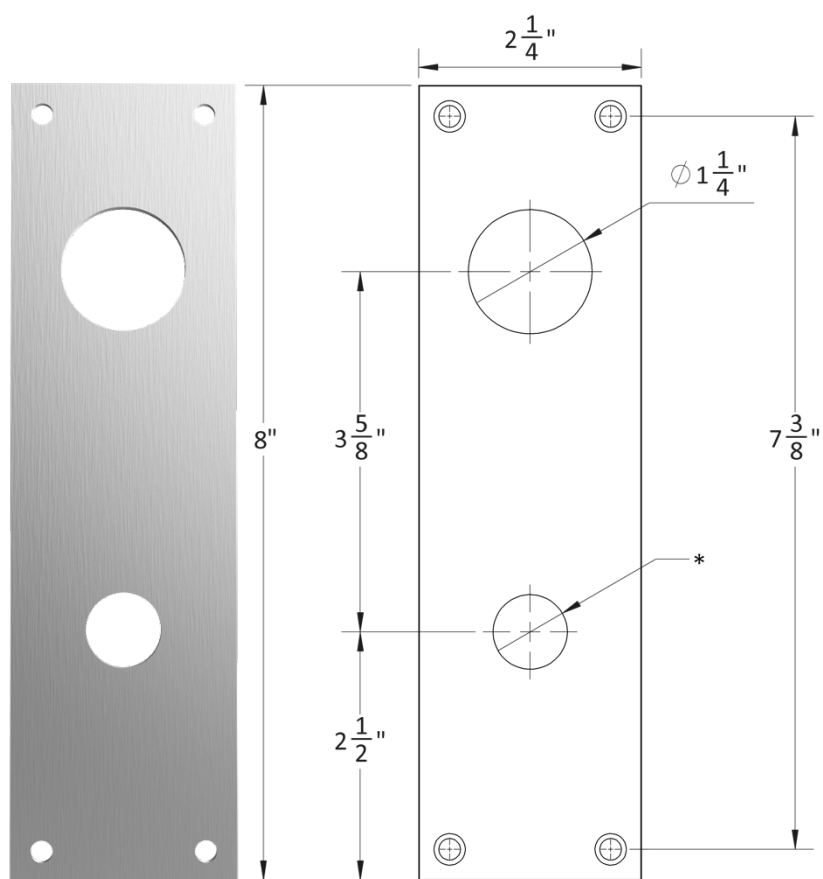
GF1106



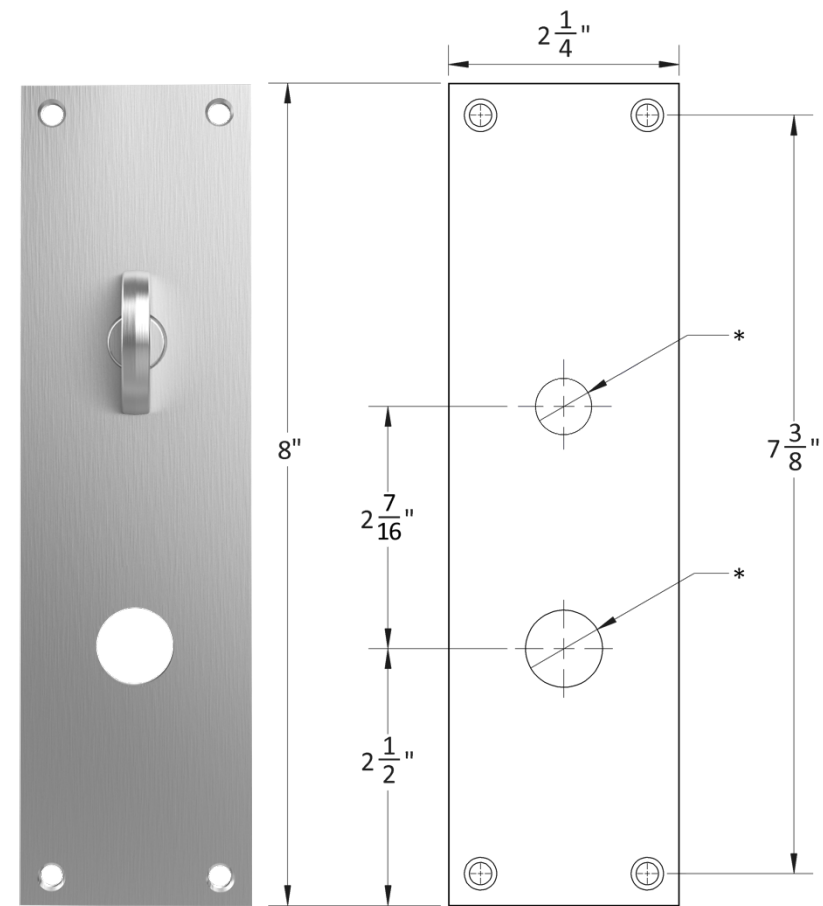
7200ADA



Accurate Escutcheons: 1E-C x 1E-T



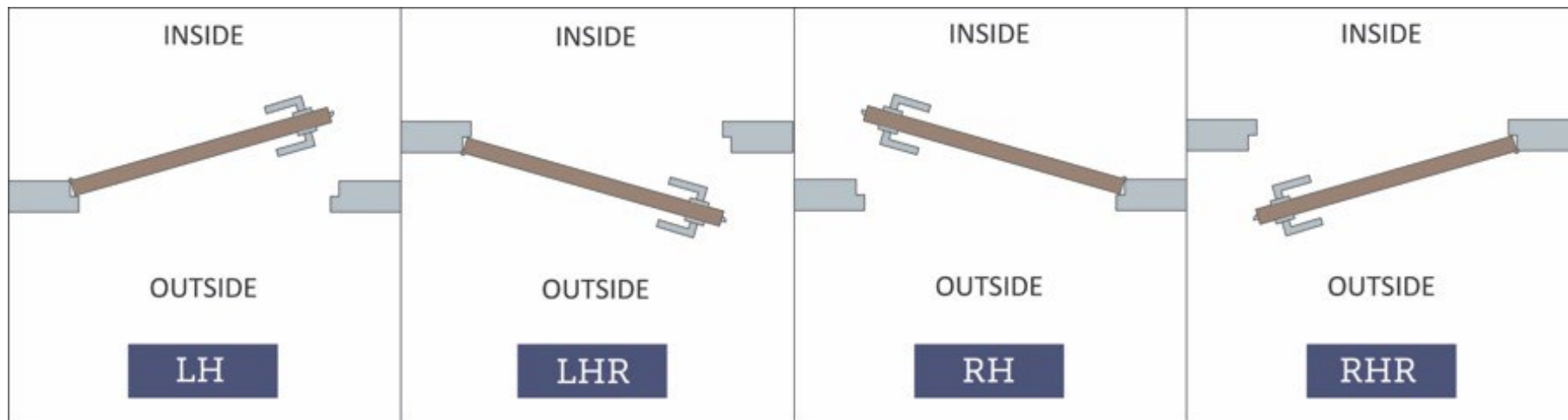
1E-C
Cylinder
Cutout



1E-T
Thumb Turn

HOW TO SPECIFY

HANDING



FINISHES

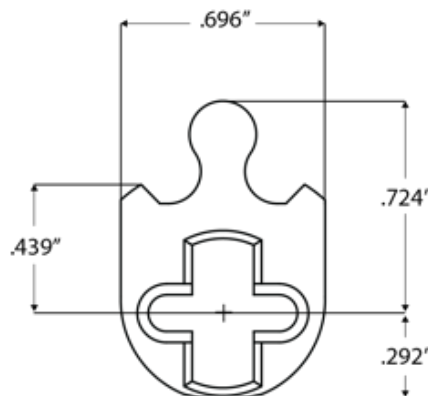
GROUP 1: US4, US4NL, US32D*, US26D

GROUP 2: US3, US3NL, US26, US32*, US9*, US10*, US10B, US14, US15, US19

GROUP 3: BN, BB, TN, TB, DURO, ESN, US15A, US5

* Trim options (including Accurate Levers) may not be available in US32D, US32, US9, or US10 finish. Please call for assistance.

To view example of finishes visit: [Accurate Finishes](#).



CYLINDERS & KEYING

SM9159E Series locks accept any standard American mortise cylinder. For details on required cams and compatibility with other manufacturers' cylinders, please visit: [Accurate Support](#).

HOW TO SPECIFY

SM9159E-SEC.BACKSET.TRIM.FINISH.HAND.DOORTHICKNESS

STANDARD

High Security Mortise Lock (SEC) provided standard (solid, stainless latch bolt).

OPTIONAL AF

Grade 1 Mortise Lock with anti-friction latch bolt.

BACKSET

2¹/₂" , 2³/₄" standard
Larger backsets available as a special order.

TRIM

- Accurate trim
- Specify other trim manufacturers and/or spindle size.

FINISHES

[See available finishes](#)

EXAMPLES

SmartEntry Lock | Accurate Trim

E.g.: SM9159E-SEC.212.29L/1R.US19.RH.134

SmartEntry Lock (Grade 1) | Accurate Trim

E.g.: SM9159E-AF.212.29L/1R.US19.RH.134

SmartEntry Lock | Other Manufacturers' Sectional Trim* | 2 ¼" Thick Door

E.g.: SM9159E-SEC.234.LxL 8mm.US4.LH.214

SPECIAL OPTIONS AVAILABLE

- USD K x K Upside Down (cylinder/thumb turn below knobs)
- USD L x L Upside Down (cylinder/thumb turn below levers)

**Note: Please call for assistance when using escutcheon trim*

**ACCURATE LOCK & HARDWARE
MANUFACTURERS OF LOCKS AND
CUSTOM ARCHITECTURAL HARDWARE**

1 Annie Place | Stamford, CT 06902

P: 203.348.8865

F: 203.348.5234

E: sales@accuratelockandhardware.com

www.accuratelockandhardware.com

