



ACCURATE  
LOCK & HARDWARE  
AMERICAN CRAFTED SINCE 1972

---

G17 + GO17 Series

NARROW BACKSET GLASS PATCH MORTISE SETS



# MODERN MINIMALISM

## G17 + GO17 SERIES

Accurate's smallest glass patch makes a minimal statement that enhances the beauty of glass doors. Offered as a complete package including lock body, patch assembly and levers; as well as cylinder and thumb turn if required.

Available in a range of finishes and functions, the G17 Series allows for sleek and modern open-space design.

**1759 FUNCTION GLASS PATCH WITH 18L LEVERS**

# G17 + GO17 Series

## SMALL BODY GLASS PATCH LOCK

### EUROPEAN-INSPIRED STYLE

- Maintain the sleek, modern aesthetic where glass doors are prominent

### DESIGN VERSATILITY

- Compatible with various partition system configurations
- Fits  $1\frac{1}{2}$ " and  $\frac{3}{8}$ " tempered glass standard, other door thicknesses available

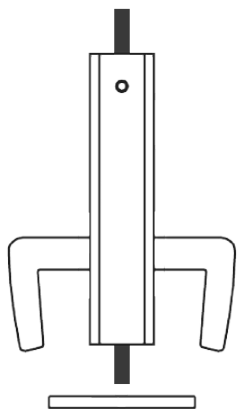
### FUNCTIONALITY

- Available in a variety of functions
- Can be used with standard mortise cylinders
- Features latch holdback by cylinder
- Quick installation



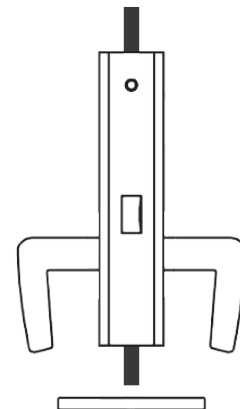
G1758 FUNCTION

# G17 Series Functions



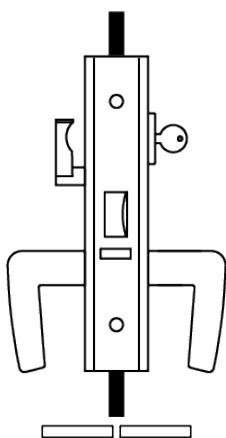
## **G1700ADL** **ACTIVE DUMMY LOCK**

Active handles inside and outside.



## **G1725** **PASSAGE**

Latch bolt by lever either side.



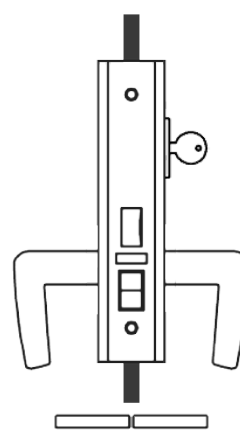
## **G1753** **ENTRANCE**

Latch bolt by lever either side unless locked by thumb turn inside or key outside (both levers become rigid).

Auxiliary latch deadlocks latch bolt.

Latch can be held retracted by key.

No emergency egress.



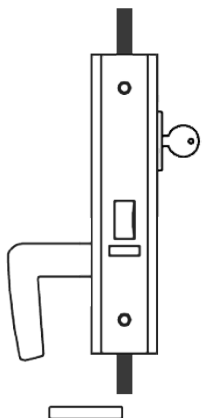
## **G1756** **ENTRANCE OR OFFICE**

Latch bolt by key outside and lever either side unless outside lever is locked by toggle-action stop.

Auxiliary latch deadlocks latch bolt.

Latch can be held retracted by key.

# G17 Series Functions



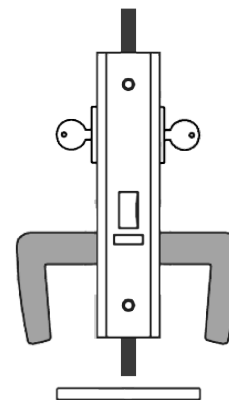
## G1757 ENTRANCE OR OFFICE

Latch by lever inside and key outside.

**No outside lever.**

Auxiliary latch deadlocks latch bolt.

Latch can be held retracted by key.



## G1758 INSTITUTION OR ASYLUM

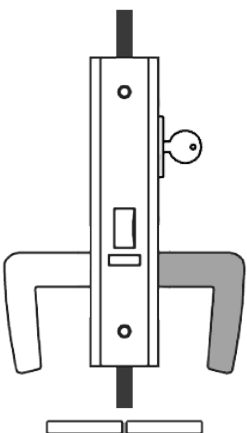
Latch by key either side.

Inside and outside levers always **rigid**.\*

Auxiliary latch deadlocks latch bolt.

Latch can be held retracted by key.

*\* Verify code compliance before using this function*



## G1759 STOREROOM OR CLOSET

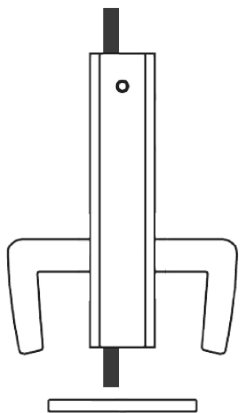
Latch by lever inside and key outside.

Outside lever always **rigid**.

Auxiliary latch deadlocks latch bolt.

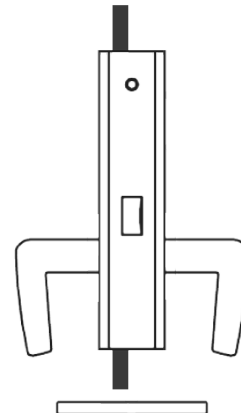
Latch can be held retracted by key.

# G17 Series Functions



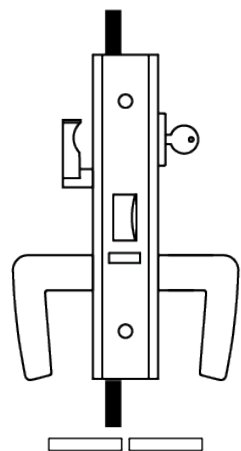
## GO1700ADL ACTIVE DUMMY LOCK

Active handles inside and outside.



## GO1725 PASSAGE

Latch bolt by lever either side.



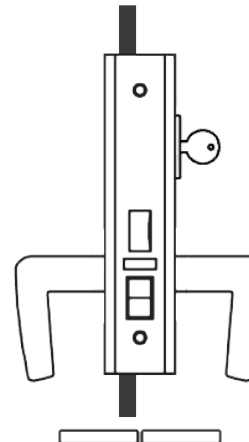
## GO1753 ENTRANCE

Latch bolt by lever either side unless locked by thumb turn inside or key outside (both levers become rigid).

Auxiliary latch deadlocks latch bolt.

Latch can be held retracted by key.

No emergency egress.



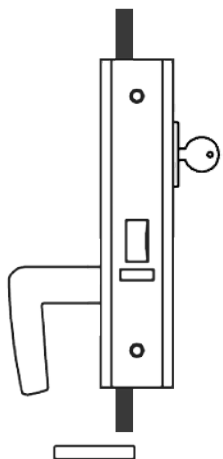
## GO1756 ENTRANCE OR OFFICE

Latch bolt by key outside and lever either side unless outside lever is locked by toggle-action stop.

Auxiliary latch deadlocks latch bolt.

Latch can be held retracted by key.

# GO17 Series Functions



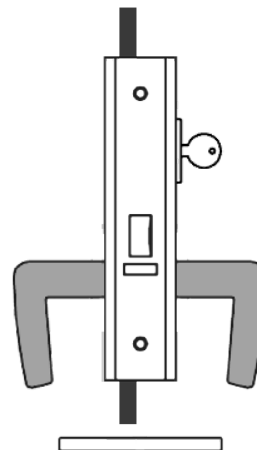
## GO1757 ENTRANCE OR OFFICE

Latch by lever inside and key outside.

**No outside lever.**

Auxiliary latch deadlocks latch bolt.

Latch can be held retracted by key.



## GO1758 INSTITUTION OR ASYLUM

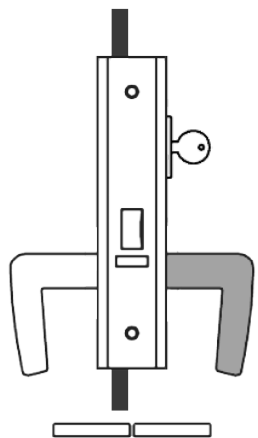
Latch by key either side.

Inside and outside levers always **rigid**.\*

Auxiliary latch deadlocks latch bolt.

Latch can be held retracted by key.

*\* Verify code compliance before using this function*



## GO1759 STOREROOM OR CLOSET

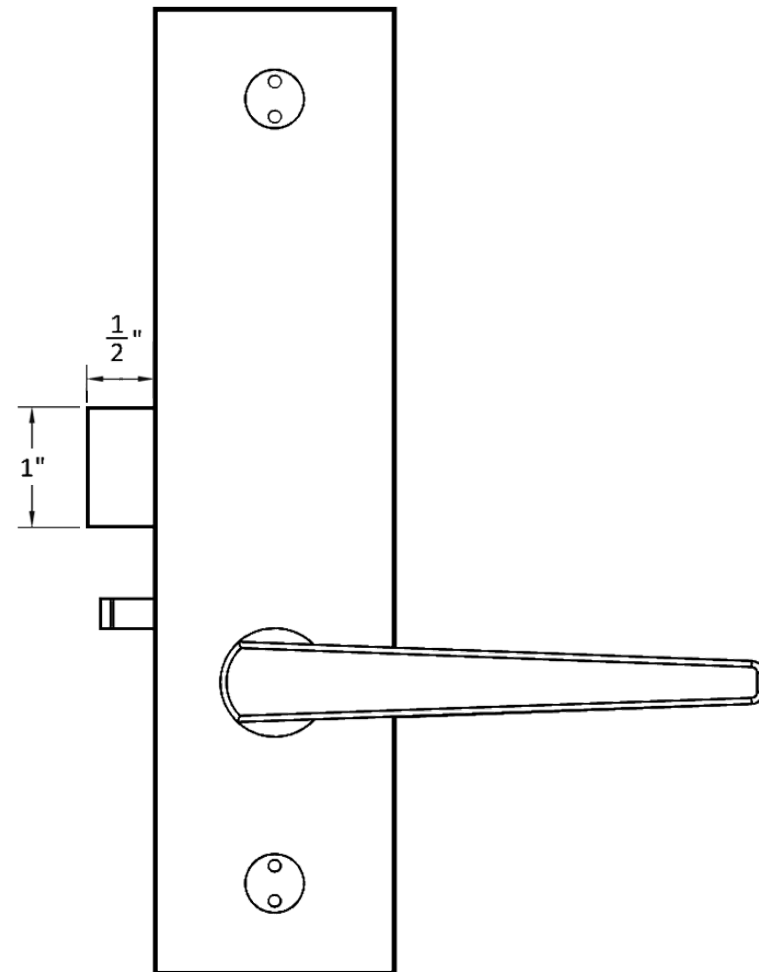
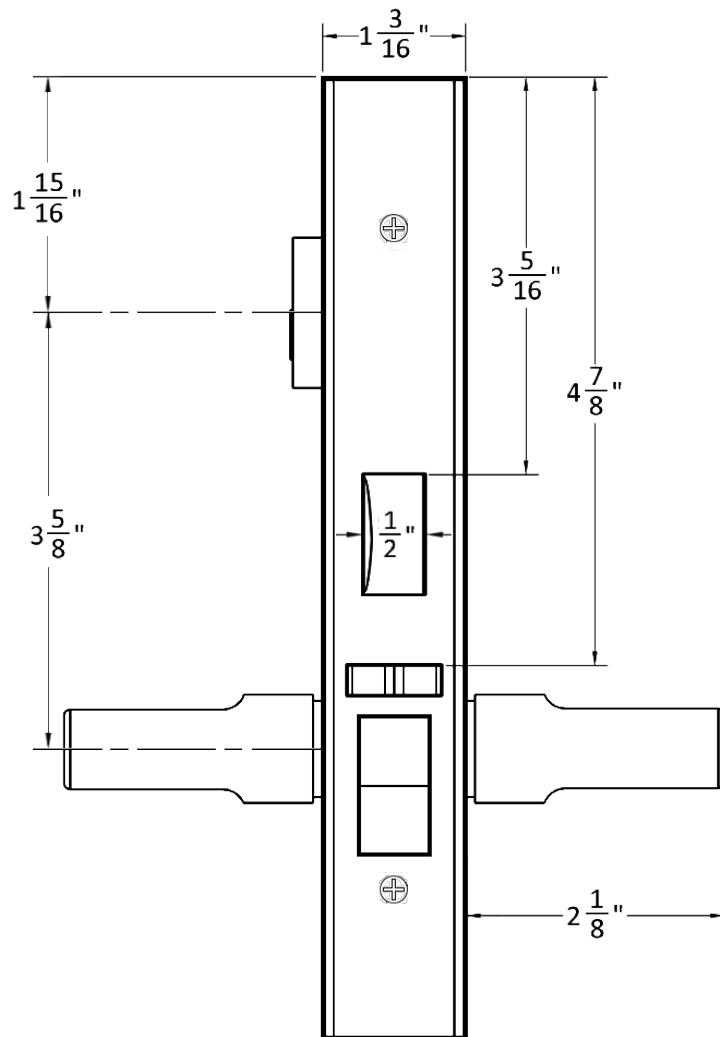
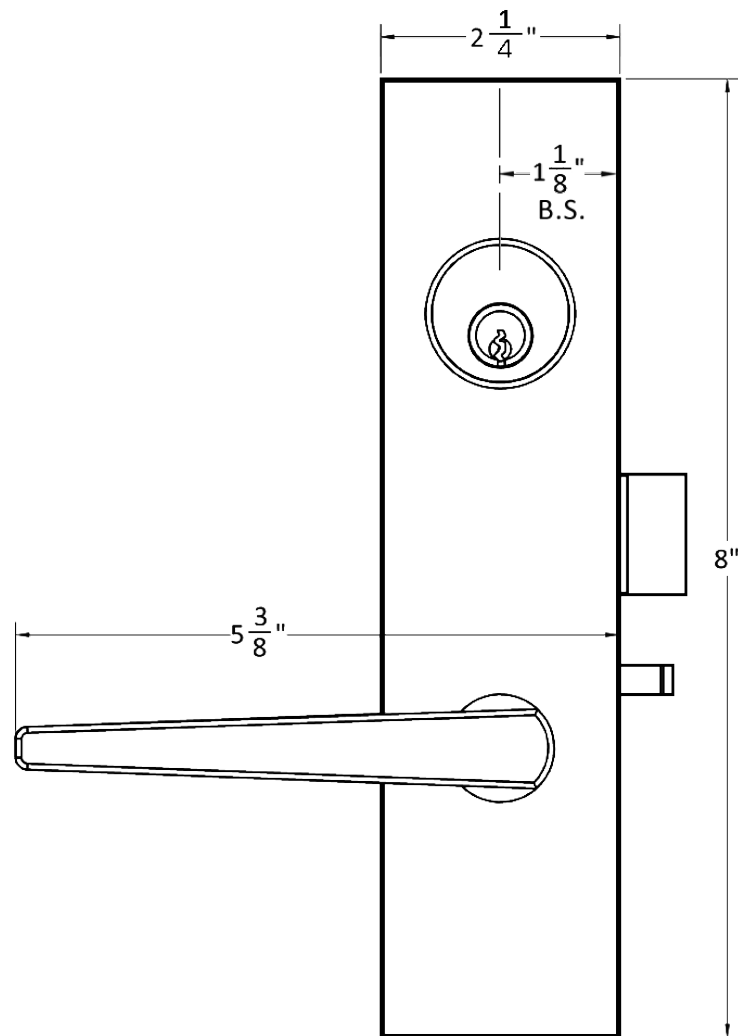
Latch by lever inside and key outside.

Outside lever always **rigid**.

Auxiliary latch deadlocks latch bolt.

Latch can be held retracted by key.

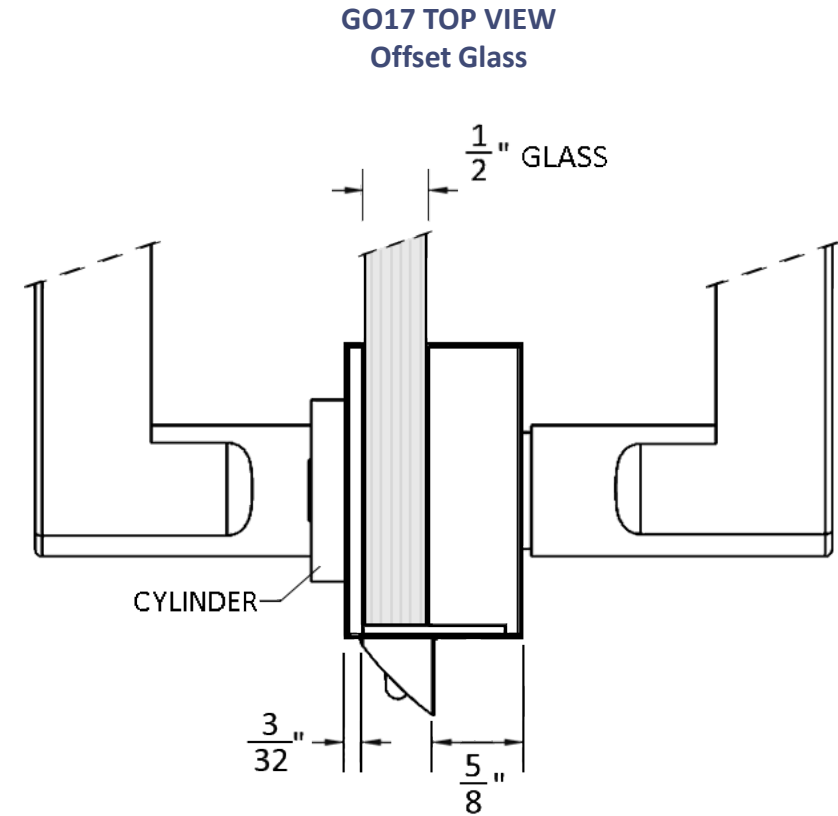
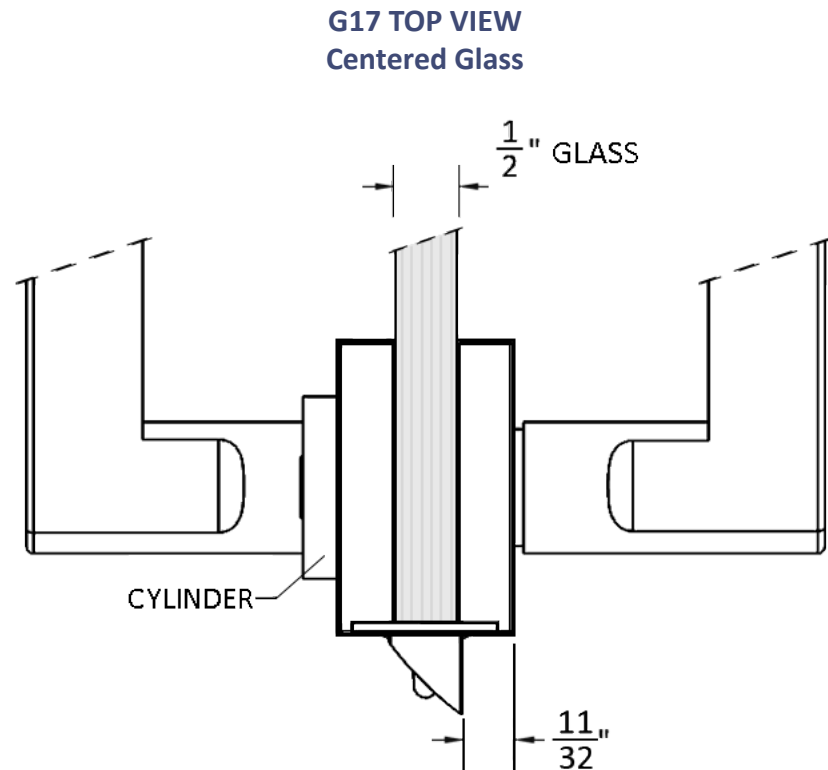
# G17 + GO17 Glass Patch Latch Bolt Dimensions



**G1756 ENTRANCE FUNCTION WITH 18L LEVERS**  
(other levers available)

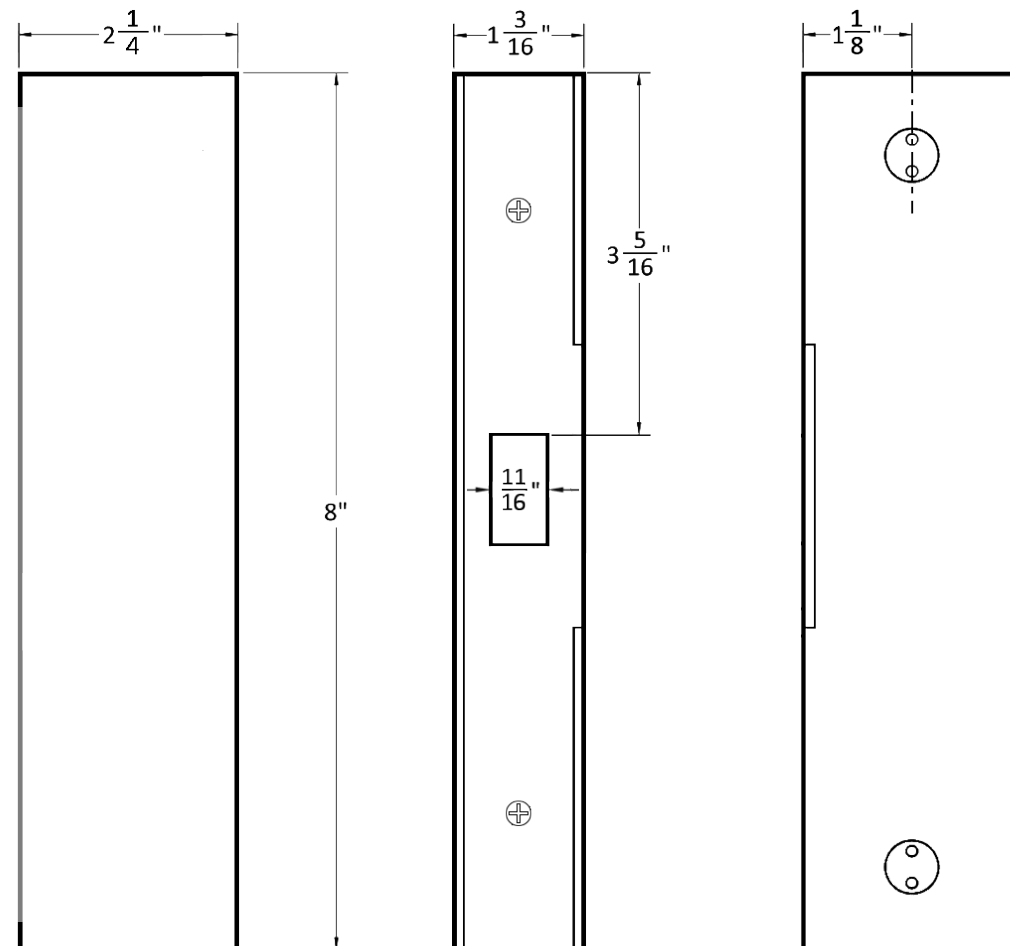


# G17 + GO17 Glass Patch Latch Bolt Dimensions

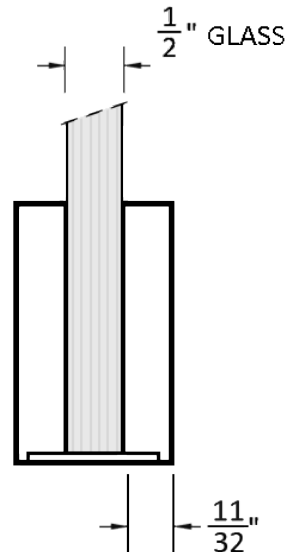


Shown on  $\frac{1}{2}$ " thick glass.  
Also available standard on  $\frac{3}{8}$ " thick glass and  
custom door thicknesses upon request.

# G17-GPS Strike Dimensions



**G17-GPS TOP VIEW**



**Specify for frameless and glass wall partition systems**

**Shown on  $\frac{1}{2}"$  thick glass.**

**Also available standard on  $\frac{3}{8}"$  thick glass and custom door thicknesses upon request.**

# Accurate Lever Trim

14L LEVER



15L LEVER



16L LEVER



17L LEVER



18L LEVER



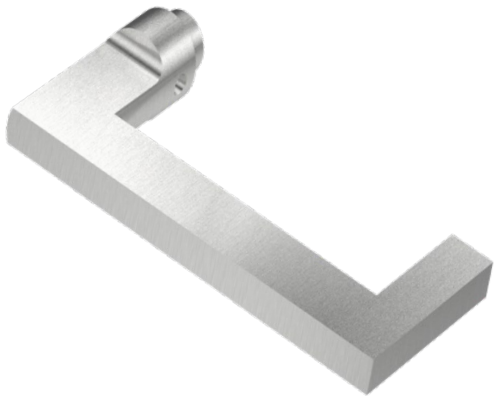
19L LEVER



[CLICK TO SEE MORE INFO ON TRIM OPTIONS](#)

# Accurate Trim

20L LEVER



21L LEVER



29L LEVER

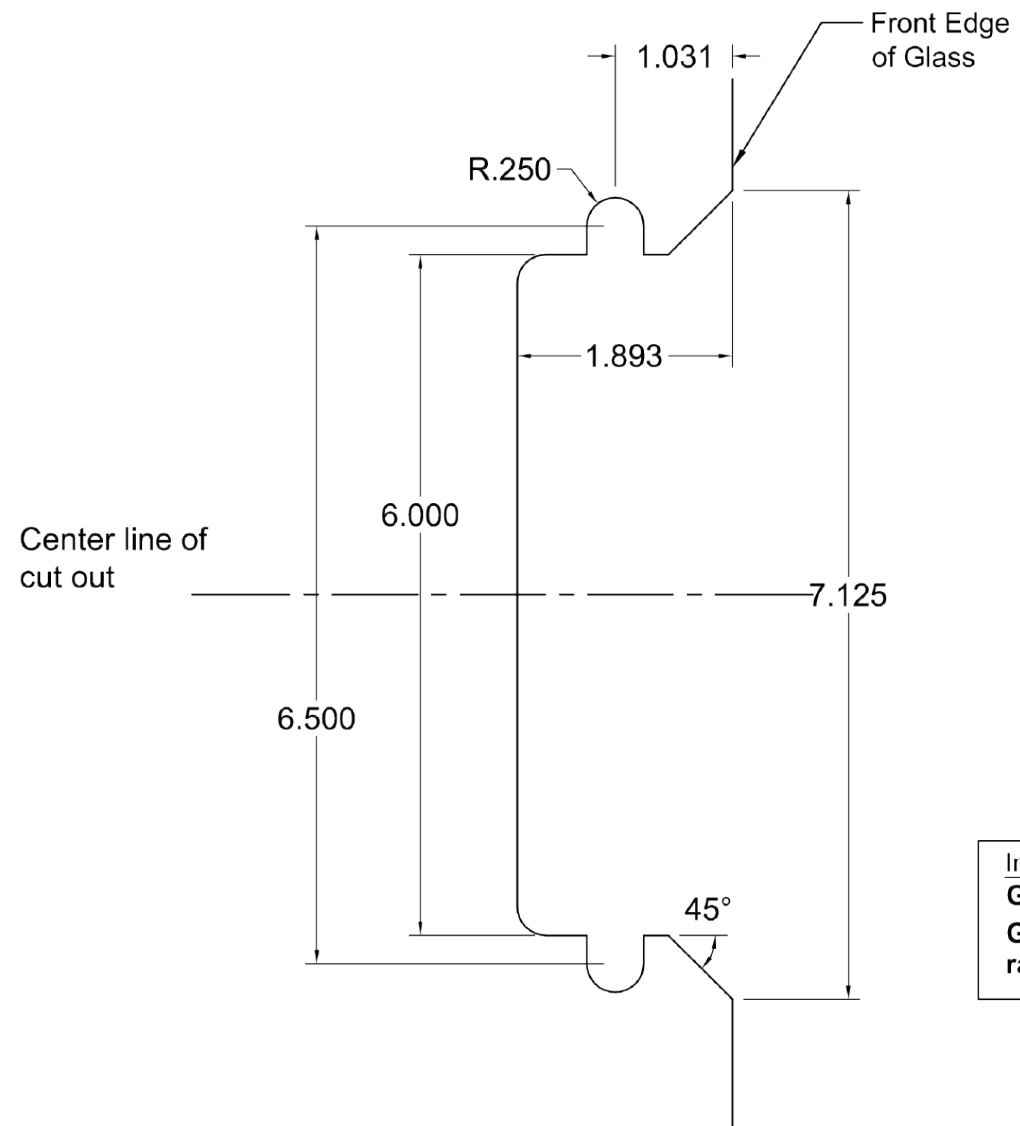


72L LEVER



[CLICK TO SEE MORE INFO ON TRIM OPTIONS](#)

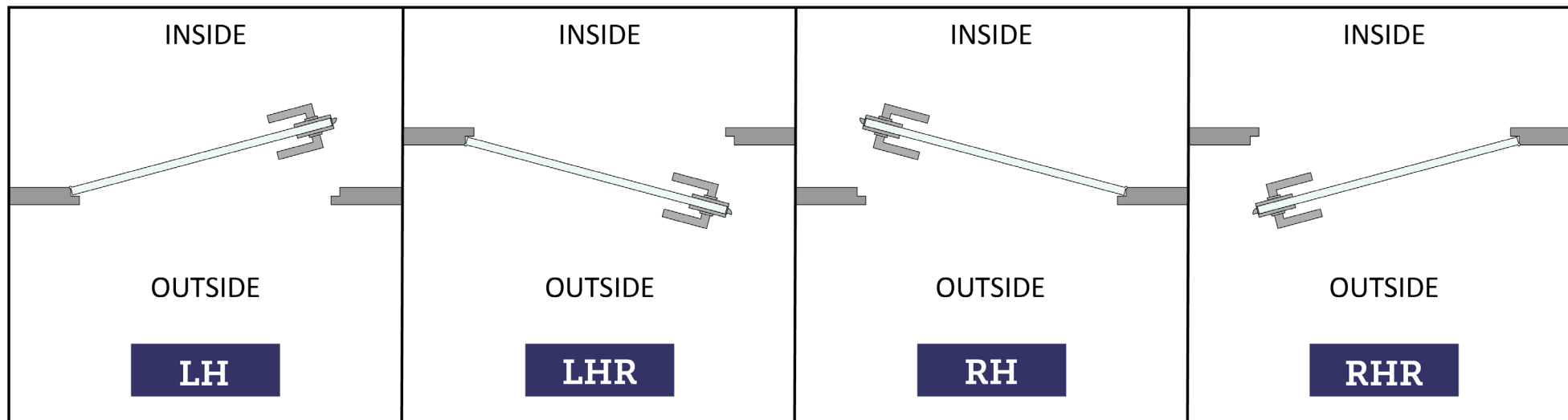
# G17 Template



Important Note:  
**Glass template for**  
**Glass ½" thick**  
**range: .469 to .531**

# HOW TO SPECIFY

## HANDING

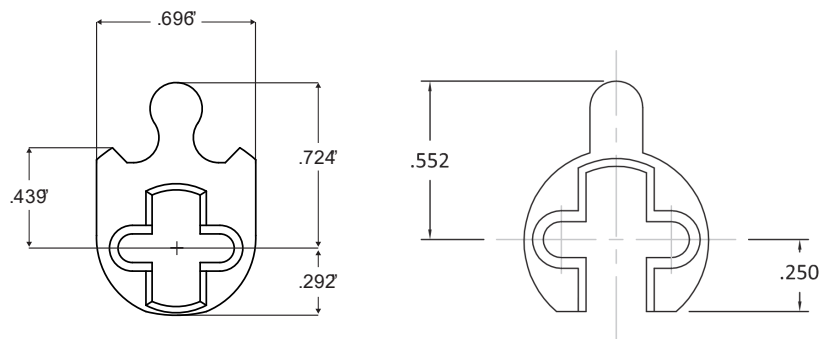


## FINISHES

US28, ESN, US19

Other finishes available, please

[contact us](#) for assistance.



## CYLINDERS & KEYING

G17 + GO17 Series locks accept any standard American mortise cylinder. For details on required cams and compatibility with other manufacturers' cylinders, please visit: [Accurate Support](#).

# HOW TO SPECIFY

**FUNCTION.BACKSET.TRIM.FINISH.HAND.DOORTHICKNESS.STRIKE**

## Functions

Available functions (pg. 4-5)

### Backset

1<sup>1</sup>/<sub>8</sub>" standard  
1" available special  
order

### Trim

Accurate Lever  
Trim included (pg.11-12)

### Finishes

Available finishes  
(pg. 12)

### G17-GPS Strike

Specify for frameless and glass  
wall applications.

### SD Strike

Available for framed  
applications. No added cost.

### Door Thickness

Standard <sup>3</sup>/<sub>8</sub>" or <sup>1</sup>/<sub>2</sub>" tempered glass.  
Other door thicknesses available upon  
request.

## EXAMPLES

**G17 Entrance | Glass Wall | Matching Patch Strike**

E.g.: G1757.118.29L.US28.RH.1/2.G17-GPS

**G17 Entrance | Aluminum Frame (4<sup>7</sup>/<sub>8</sub>" Strike)**

E.g.: G1756.118.16L.US19.RH.1/2.SD

**GO17 Passage | Offset**

E.g.: G1725.118.15L.ESN.RH.1/2

## CUSTOM OPTIONS AVAILABLE

- G17 can be set up for levers by other manufacturers upon request.
- Access control applications available
- Sliding door and self-latching functionality
- G17-GPS Strike specified and sold separately

**Cylinders and cylinder thumb turns  
must be specified separately if  
required.**

**See 1700 Series for lock body  
information.**

*\*Note: For compatibility please verify vertical spacing as well as through-bolting locations or call for assistance.*

**ACCURATE LOCK & HARDWARE**  
**MANUFACTURERS OF LOCKS AND**  
**CUSTOM ARCHITECTURAL HARDWARE**

1 Annie Place | Stamford, CT 06902

**P:** 203.348.8865

**F:** 203.348.5234

**E:** sales@accuratelockandhardware.com

**www.accuratelockandhardware.com**



**AMERICAN CRAFTERS**  
**— SINCE 1972 —**