

# SMARTENTRY™

by ACCURATE

## SL-SM9159E Series

Self-Latching Smartphone Mortise Lock for Sliding + Pocket Doors

THE LEADING SMART LOCK SOLUTION FOR SLIDING DOORS

## SL-SM9159E SmartEntry Self-Latching Mortise Lock for Sliding + Pocket Doors

One of the first smartphone-operated systems for mortise locks, the SM9159E combines Accurate's mechanical expertise with industry leading technology. The battery-powered smartlock allows users to integrate directly with standard open-source platforms through a widely adopted protocol called *Matter*, which is a simplified common language for smarthome devices. Keeping design top of mind, this lock is compatible with any style trim and has no exposed electronics.

- All components hidden inside mortise pocket
- Fully customizable – pair with virtually any style architectural trim
- Battery powered for easy installation. Door does not require any wiring
- Lock and unlock the door and grant keyless entry via Smart Home Platform.



## SL-SM9159E SmartEntry Self-Latching Mortise Lock for Sliding + Pocket Doors



iOS + Android  
compatible



Control lock remotely  
from anywhere in the  
world



Invite family and friends  
to access the lock 24/7  
or on a schedule



Battery operated  
with app indicator



Compatible with standard  
trim configurations (LxL,  
TPxK, etc.)

**Integrate seamlessly with compatible,  
industry-leading smart home devices.**



- Apple HomePod Mini
- Apple HomePod
- Apple TV 4K Wifi or Ethernet
- Amazon Echo 4th Generation

## SL-SM9159E-LL Sectional Trim

19L Lever / 4R Rose

The Self-Latching SmartEntry™  
Smartphone Mortise Lock is paired with  
sectional trim (thumb turn inside,  
cylinder outside) on a sliding door.  
Compatible with any Accurate Lever/Rose  
combination.

WATCH THE VIDEO







## SL-SM9159E-ADA ADA Trim

72L Lever / 1E Escutcheon

The Self-Latching SmartEntry™  
Smartphone Mortise Lock is paired with  
ADA Compliant (thumb turn inside,  
cylinder outside) on a sliding door.

WATCH THE VIDEO



## SL-SM9159E-PDL

### Pocket Door Trim

The Self-Latching SmartEntry<sup>TM</sup>  
Smartphone Mortise Lock is paired with  
flush pulls on either side allowing the  
door to return completely inside a  
pocket.

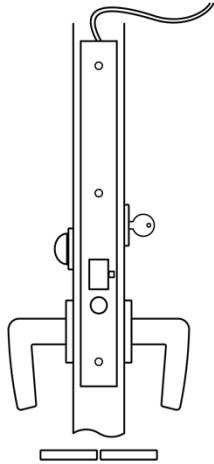
[WATCH THE VIDEO](#)



# SL-SM9159E Series | Operation

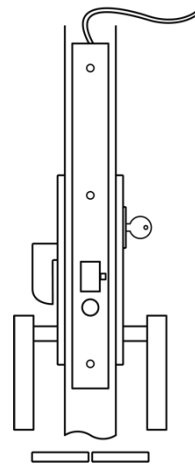
## SL-SM9159E-LL

Sectional Trim Lever x Lever



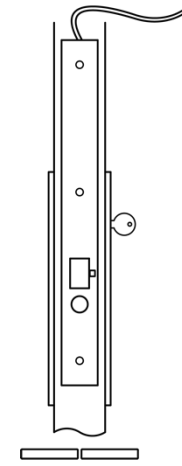
## SL-SM9159E-ADA

ADA Trim



## SL-SM9159E-PDL

Pocket Door Flush Pull Trim



### OUTSIDE:

Latch by lever outside after handle is unlocked with smart phone. When locked, outside lever will remain locked at all times. Keyed cylinder ONLY retracts the latch. It does NOT lock or unlock the door.

### INSIDE:

Latch by lever inside always. Rotating thumb turn locks the outside handle and thumb turn springs back to home position. Thumb turn will NOT unlock the outside lever.

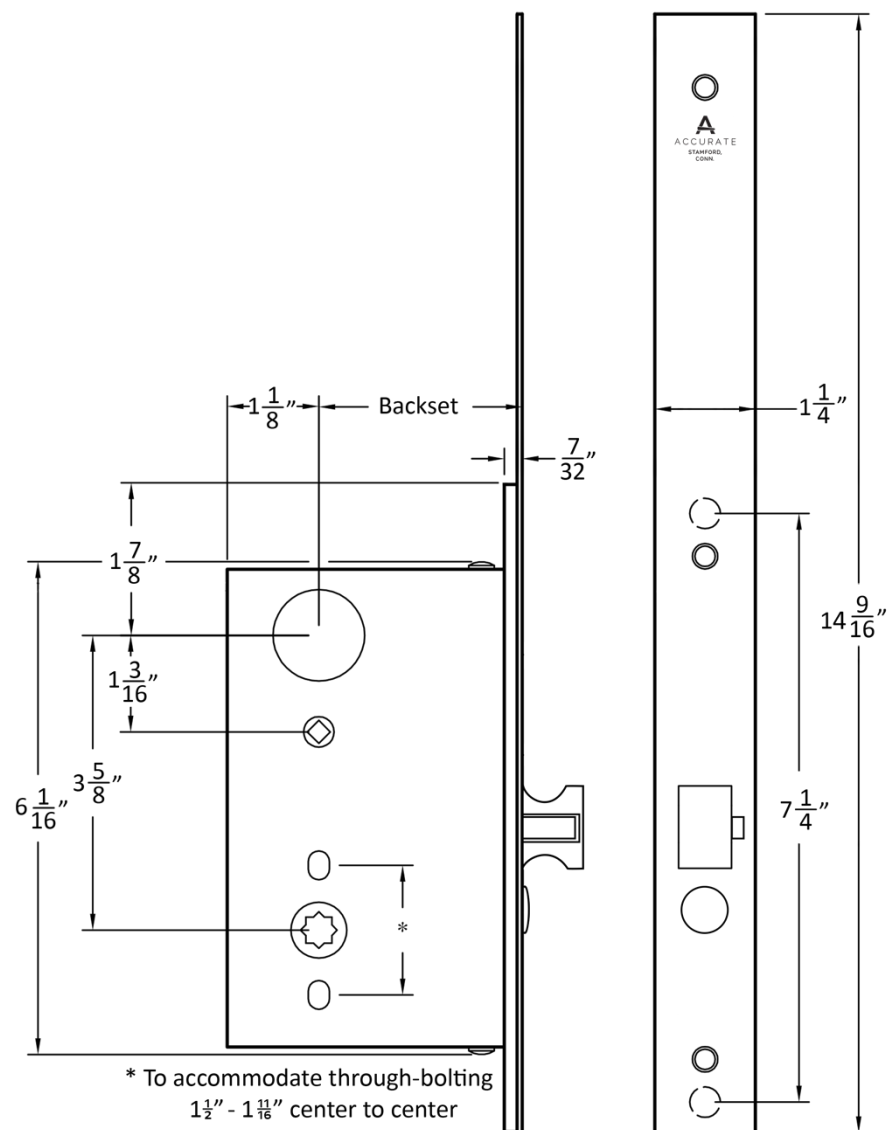
### STATUS:

Locked or Unlocked status of lock will show in compatible smart home app (Compatible Apple | Amazon Device). Lock/Unlock ability within app or by voice command as applicable by compatible smart home device.

### GENERAL NOTES:

- The system operates through WIFI with the device connecting to the hub (Compatible Apple | Amazon Device). Provided that the hub is in proximity to the device and on the network, users can operate the lock locally or remotely.
- Lock operated by 4 AA batteries with low battery warning in app. To replace the batteries simply remove armor plate on edge of door and access the battery pack.
- Lock can also be powered with traditional hard wired power supply up to 24 volts. Please specify if you are using it this way.

# SL-SM9159E Series | Technical Details



**BACKSET:** 2 ½", 2 ¾" backset standard; larger backsets available as a special order.

**CASE:** Heavy Gauge, Plated Steel ( $15/16$ " thick)

**LATCH BOLT:** Solid stainless steel latch bolt, 1" tall, 3/4" throw

**STRIKE:** 4<sup>7</sup>/<sub>8</sub>" ASA. Supplied with Security Strike

**HUBS:** Available in different sizes to be compatible with various trim options

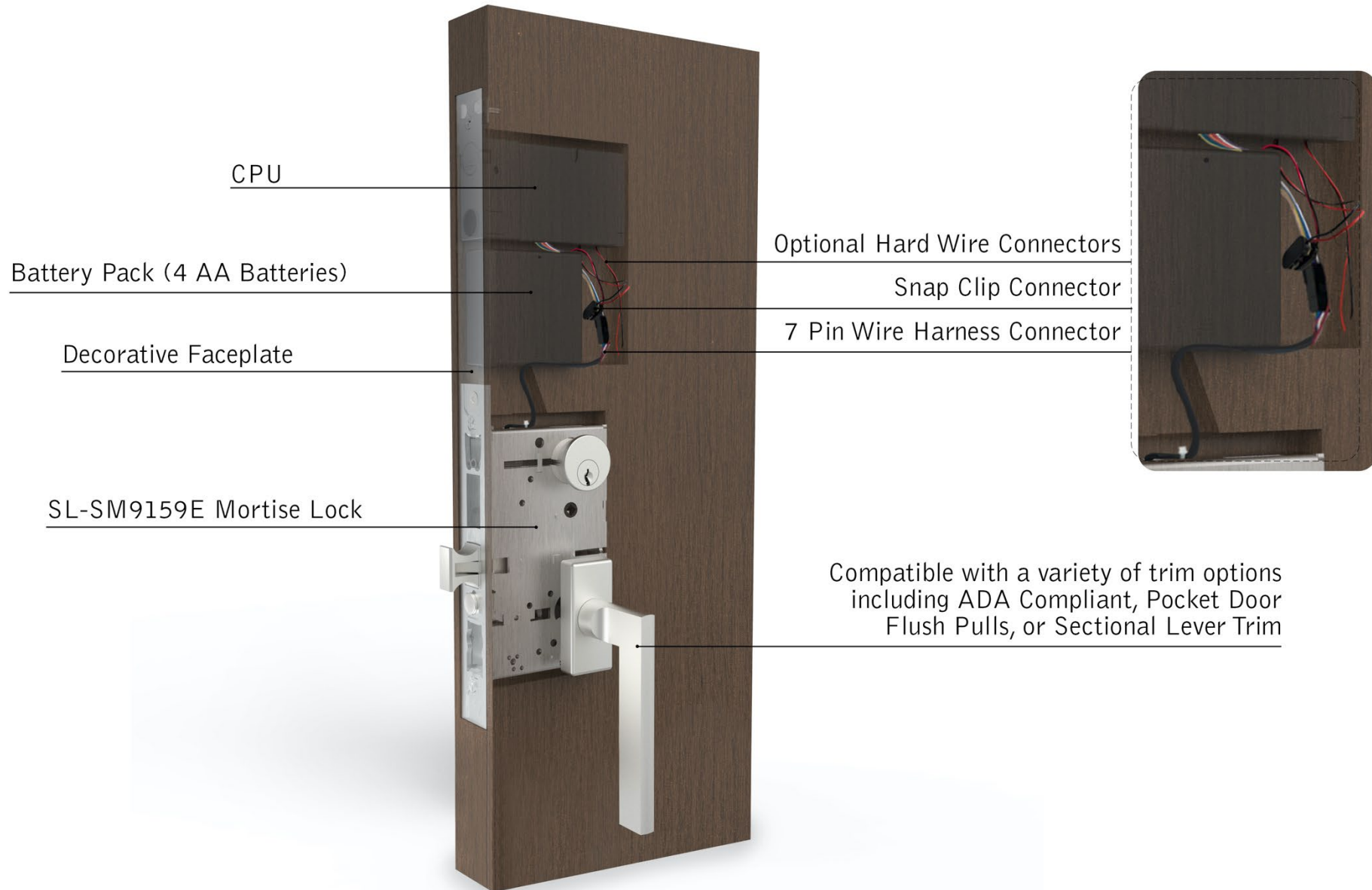
**THUMB TURN HUB:**  $\frac{3}{16}$ " (5mm) on the diamond

**DUST BOX:** Brass, stainless steel, or US10B

**ARMOR FRONT:** Stainless steel with adjustable bevel  
Supplied with 14 <sup>9</sup>/<sub>16</sub>" tall face plate to cover battery mortise pocket



# SL-SM9159E Series | Components



# SM9159E Series | Components

## COMPATIBLE DEVICES



iOS + Android compatible



- Apple HomePod Mini
- Apple HomePod
- Apple TV 4K Wifi or Ethernet



- Amazon Echo 4th Generation

# SM9159E Series | Components

## OPTIONAL KEYPAD



iOS compatible ONLY



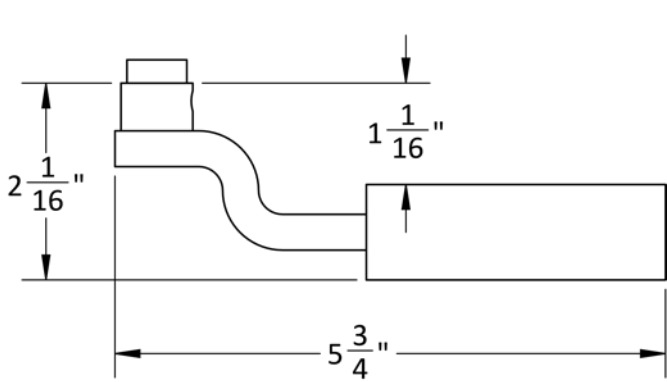
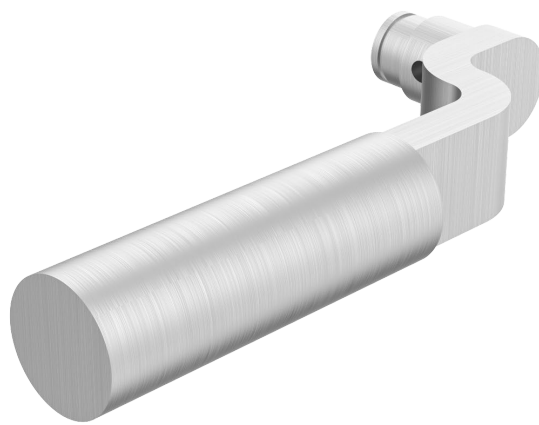
**SM-KP**

5 1/4" H x 2 1/8" W x 13/16" D

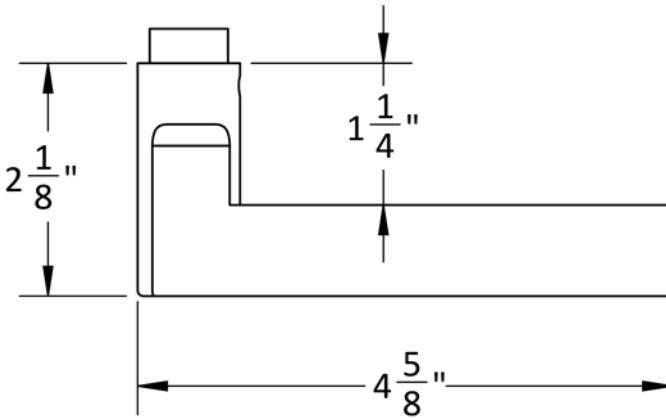
*\*optional decorative housing available upon request*

# Accurate Levers

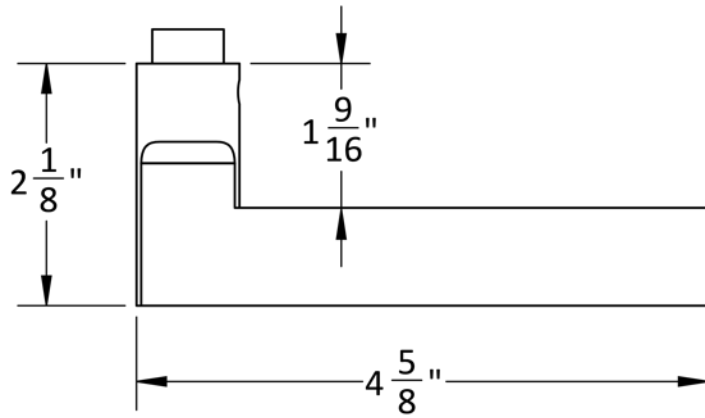
17L LEVER



18L LEVER

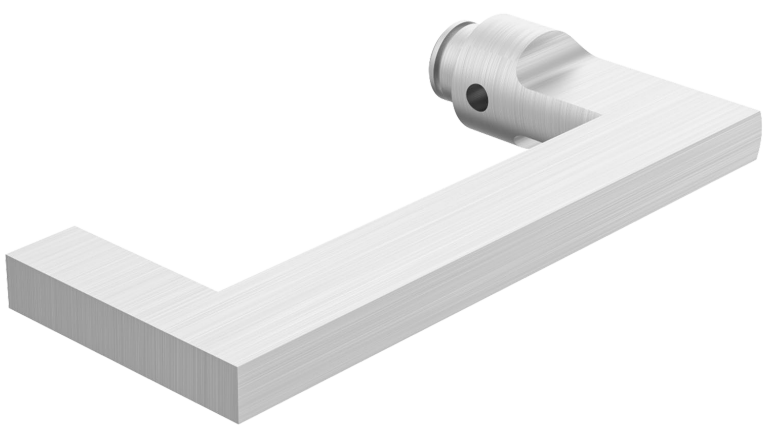


19L LEVER

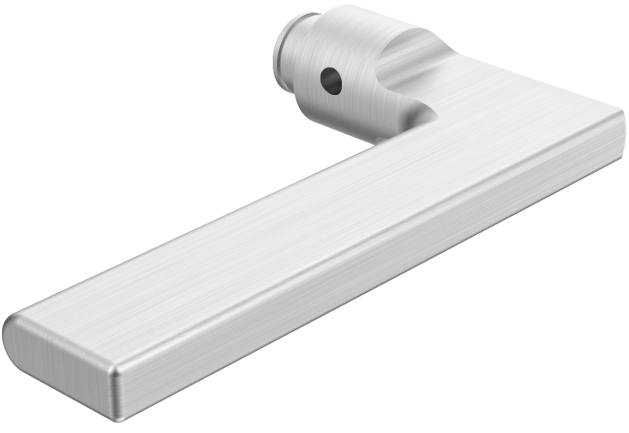


# Accurate Levers

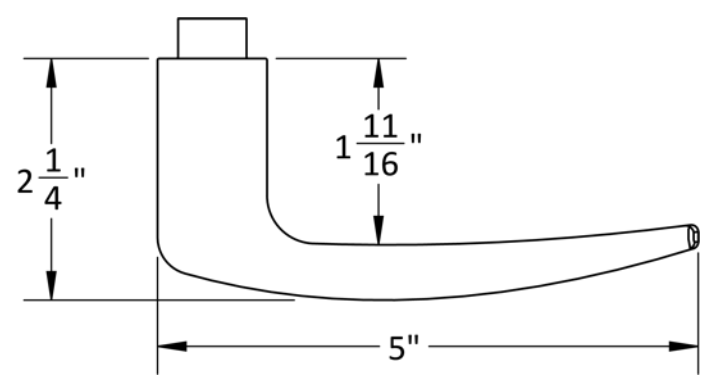
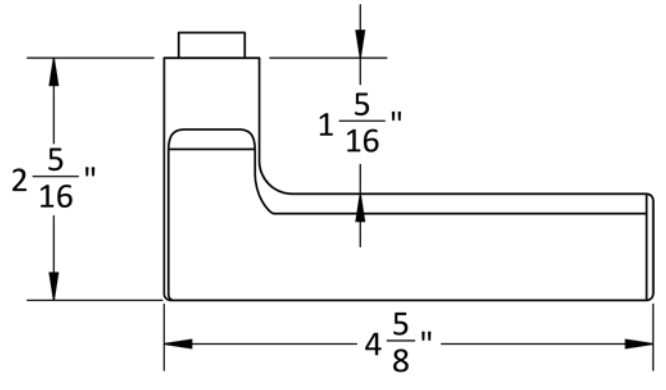
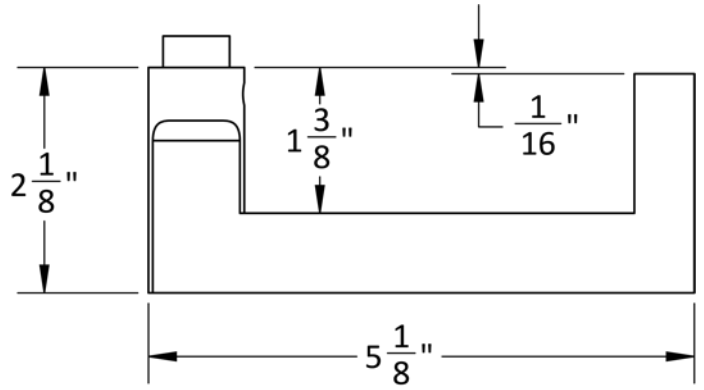
20L LEVER



21L LEVER



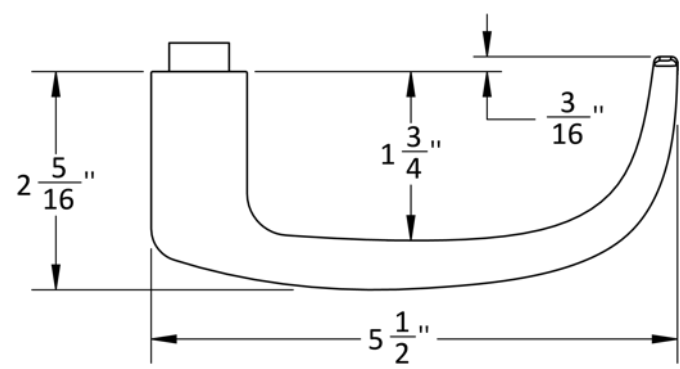
29L LEVER



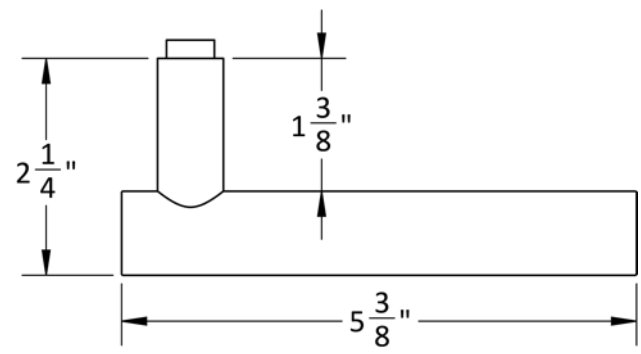


# Accurate Levers

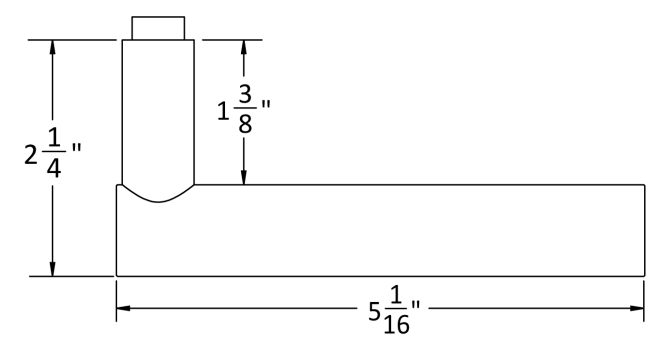
39L LEVER



72L LEVER



74L LEVER



# Accurate Rose Options

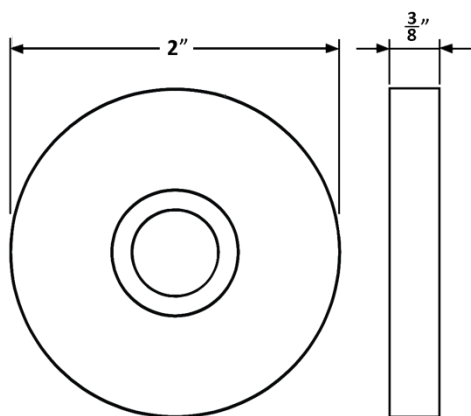
For SL-SM9159E Sectional Trim (LxL) Sets

## 1R ROSE

Front



Side



SILENTPAC™ LEVER DAMPENING DISC CAN BE  
SPECIFIED WITH THE 1R ROSE  
VISIT [SILENTPACSOLUTIONS.COM](http://SILENTPACSOLUTIONS.COM)

## 2R ROSE

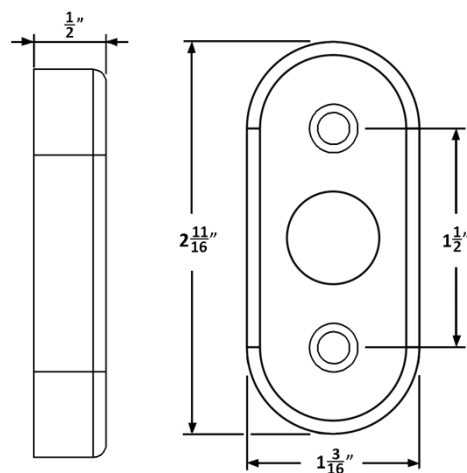
Side



Inside



Outside



## 4R ROSE

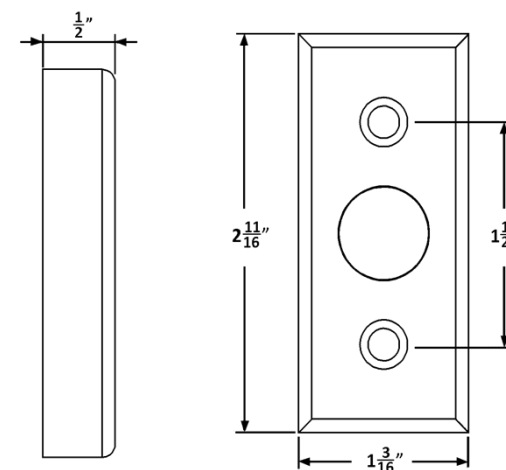
Side



Inside



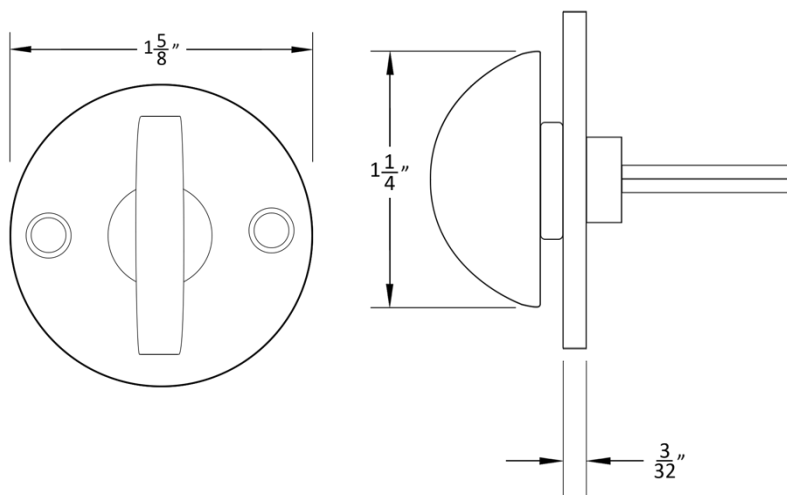
Outside



# Accurate Thumb Turn

**GF1106**

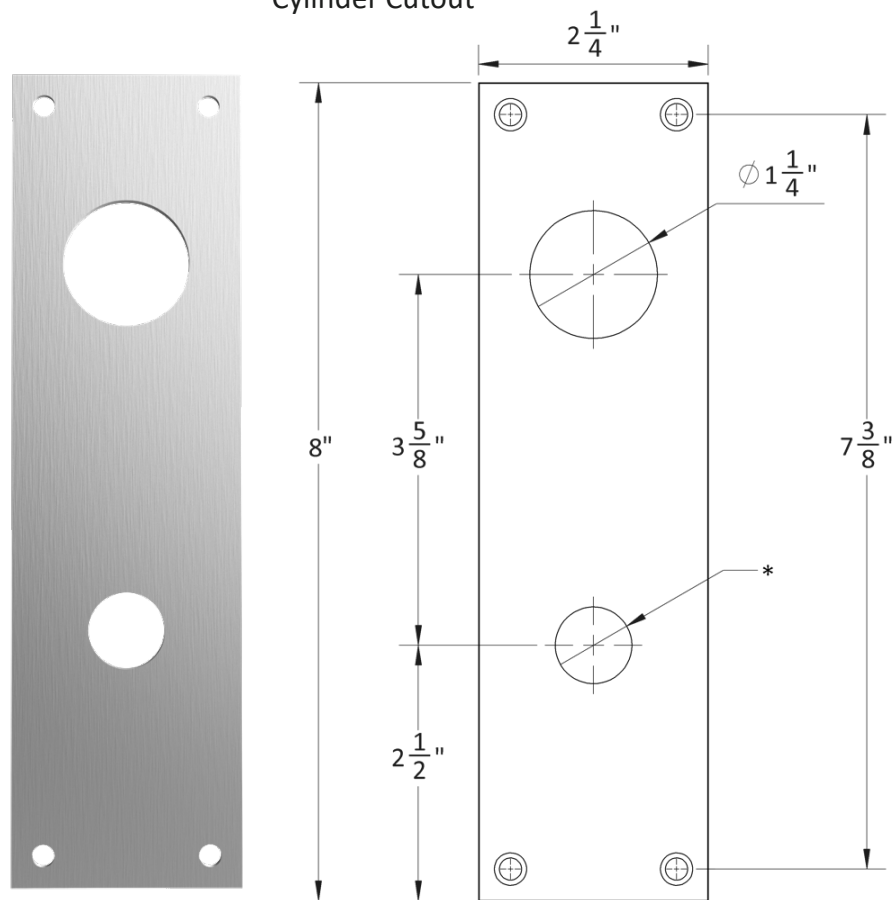
For SL-SM9159E Sectional Trim Sets



# Accurate Escutcheons

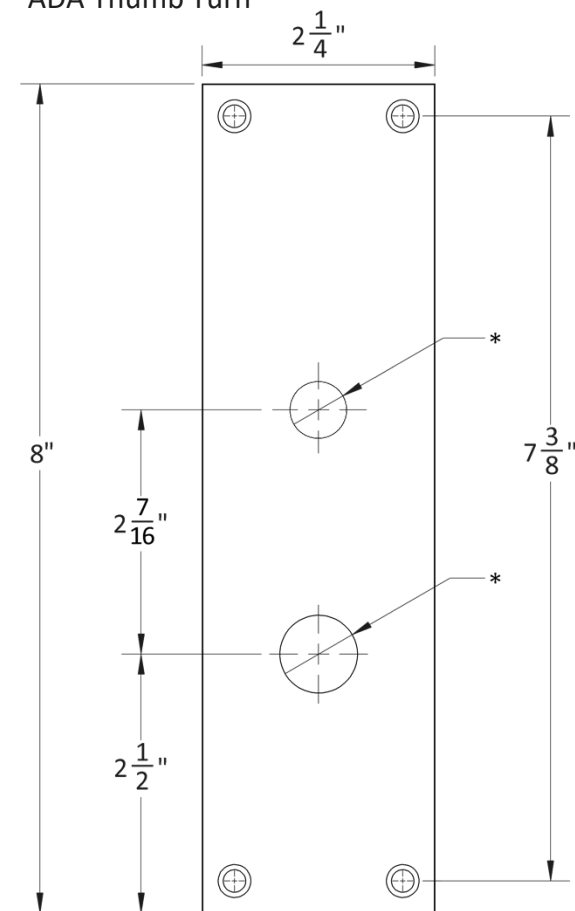
For SL-SM9159E-ADA Sets

**1E-C**  
Escutcheon with  
Cylinder Cutout



\* Dimensions may vary depending on trim

**1E-ADA**  
Escutcheon with  
ADA Thumb Turn



\* Dimensions may vary depending on trim

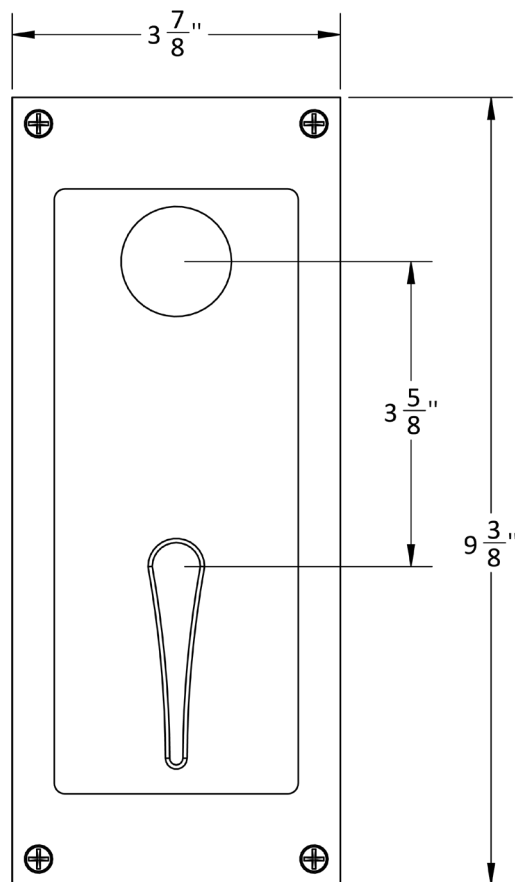
Cylinders by others, or must be specified  
when ordering. [See more info here.](#)

# Accurate Flush Pull Trim

For SL-SM9159E-PDL Sets

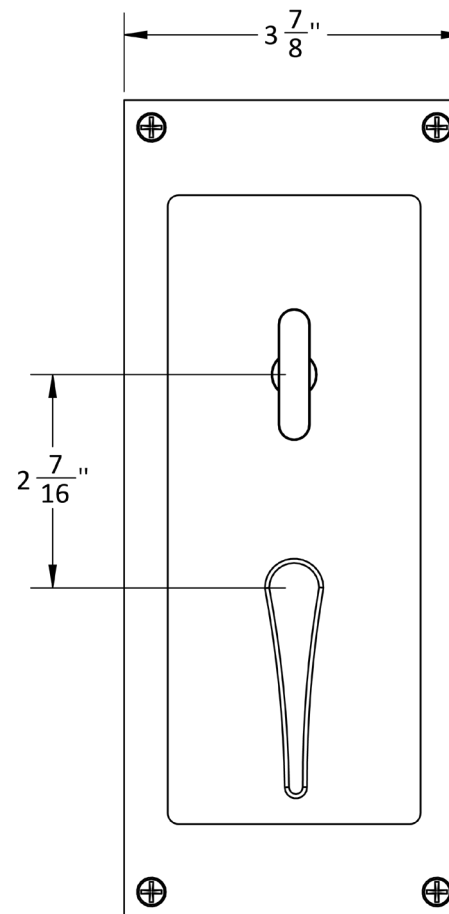
## SLFT-C

Flush Pull with  
Cylinder Cutout



## SLFT-T

Flush Pull with  
Thumb Turn

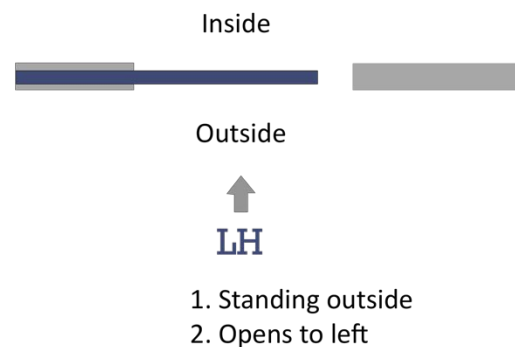
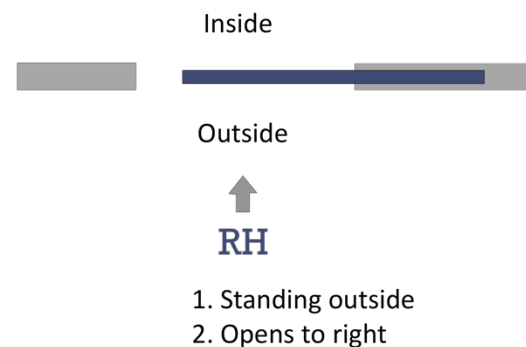


Cylinders by others, or must be specified  
when ordering. [See more info here.](#)



# HOW TO SPECIFY

## HANDING



## FINISHES

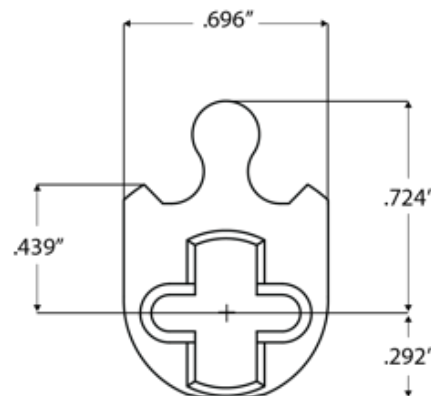
**GROUP 1:** US4, US4NL, US32D\*, US26D

**GROUP 2:** US3, US3NL, US26, US32\*, US9\*, US10\*, US10B, US14, US15, US19

**GROUP 3:** BN, BB, TN, TB, DURO, ESN, US15A, US5

\* Trim options (including Accurate Levers) may not be available in US32D, US32, US9, or US10 finish. Please call for assistance.

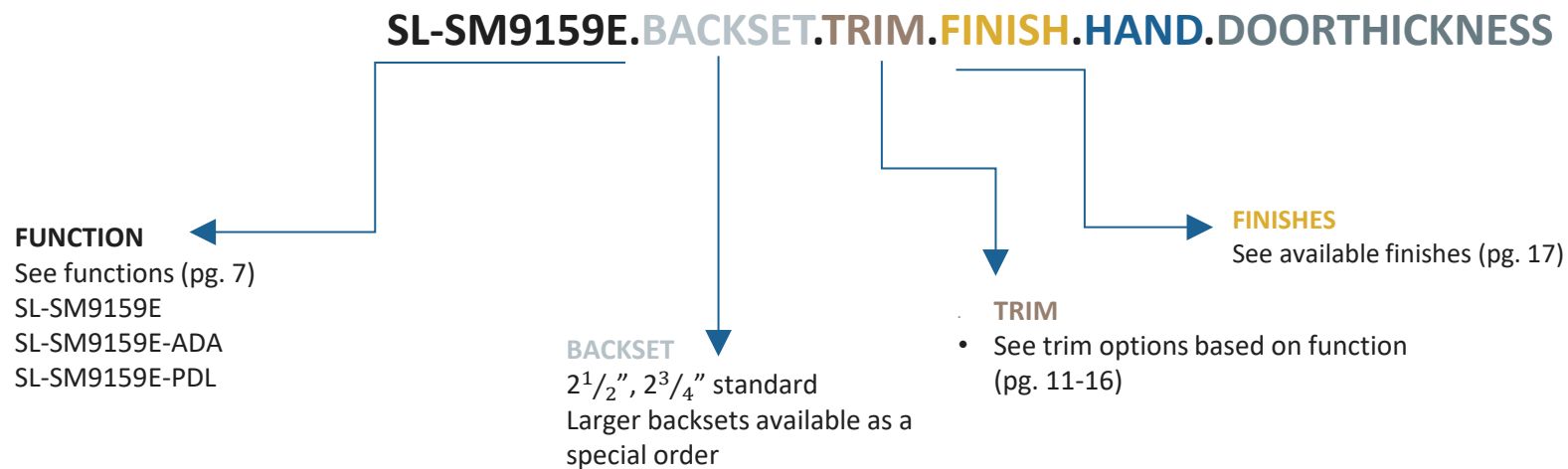
To view example of finishes visit: [Accurate Finishes](#).



## CYLINDERS & KEYING

SL-SM9159E Series locks accept any standard American mortise cylinder. For details on required cams and compatibility with other manufacturers' cylinders, please visit: [Accurate Support](#).

# HOW TO SPECIFY



## EXAMPLES

SmartEntry Sliding Door | Accurate Sectional Trim

E.g.: SL-SM9159E-LL.212.29L/1R.US14.RH.134

SmartEntry Sliding Door | ADA Trim

E.g.: SL-SM9159E-ADA.212.19L.US19.RH.134

SmartEntry Pocket Door | Flush Pull Trim

E.g.: SL-SM9159E-PDL.234.US14.LH.214

SmartEntry Sliding Door | Accurate Sectional Trim

E.g.: SL-SM9159E-LL.234.19L/2R.US5.LH.134

SmartEntry Sliding Door | Accurate ADA Trim

E.g.: SL-SM9159E-ADA.212.72L.US26D.RH.134

SmartEntry Pocket Door | Flush Pull Trim

E.g.: SL-SM9159E-PDL.234.US14.RH.214

Cylinders by others, or must be specified when ordering. [See more info here.](#)

## ACCURATE LOCK & HARDWARE MANUFACTURERS OF LOCKS AND CUSTOM ARCHITECTURAL HARDWARE

1 Annie Place | Stamford, CT 06902

**P:** 203.348.8865

**F:** 203.348.5234

**E:** [sales@accuratelockandhardware.com](mailto:sales@accuratelockandhardware.com)

**[www.accuratelockandhardware.com](http://www.accuratelockandhardware.com)**



AMERICAN CRAFTED  
— SINCE 1972 —