



ACCURATE
LOCK & HARDWARE
AMERICAN CRAFTED SINCE 1972

M8500E | M8600E Motor Drive Electrified Narrow Backset Mortise Lock

ACCESS CONTROL FOR NARROW STILE DOORS



FLOOR

3

MOTOR DRIVE ELECTRIFIED NARROW BACKSET MORTISE LOCK

The M8500E is designed with a 1-1/4" backset which has a smaller overall depth for narrow profile door construction.

Available as a complete set with Accurate Trim in a variety of finishes, or compatible with most manufacturers' trim.

Standard and UL Listed offerings available.

M8500E Product Benefits

M8658E/M8659E For doors 1 3/8" minimum (1" armor front)

M8558E/M8559E For doors 1 3/4" minimum (1 1/4" armor front)

BACKSET 1 1/4"

UL Listed Option Available, Specify M8659E-UL

OPERATION

- Key Cylinder (by others) will override electronics to retract latch bolt.
- VOLTAGE: 12-24V AC/DC (11V-30V)
- CURRENT: 250mA MAX Inrush, 10mA MAX Holding
- Non-polarized Leads

KEY BENEFITS

- Field selectable fail secure or fail safe
- Compatible with standard 12 and 24VDC power supplies

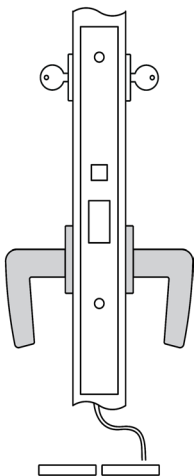


DETAIL VIEW



Lock is furnished as FAIL SECURE and can easily be changed to FAIL SAFE.

M8500E Technical Details

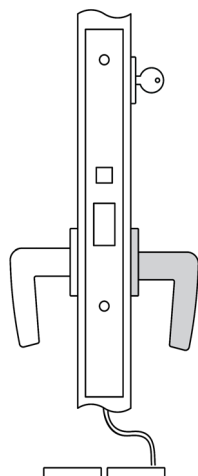


M8558E - for doors 1 3/4" minimum
M8658E - for doors 1 3/8" minimum

Latch bolt by key either side.
 Auxiliary latch deadlocks latch bolt.

FAIL SECURE OPERATION: Inside and outside trim unlocked when power is applied and locked when power is removed.

FAIL SAFE OPERATION: Inside and outside trim locked when power is applied and unlocked when power is removed. Lockset will unlock in the event of a power failure.



M8559E - for doors 1 3/4" minimum
M8659E - for doors 1 3/8" minimum

Latch bolt by key outside.
 Inside trim always free.
 Auxiliary latch deadlocks latch bolt.

FAIL SECURE OPERATION: Inside and outside trim unlocked when power is applied and locked when power is removed.

FAIL SAFE OPERATION: Inside and outside trim locked when power is applied and unlocked when power is removed. Lockset will unlock in the event of a power failure.

OPERATION

VOLTAGE 12-24V AC/DC (11V-30V)

CURRENT 250mA MAX Inrush, 10mA MAX Holding

OPTIONAL MONITORING FUNCTION

AE - AUTHORIZED EGRESS

Also referred to as *REQUEST TO EXIT* (or *REX switch*), monitors the use of the *INSIDE* trim when the *OUTSIDE* trim is locked.

AE ELECTRICAL SPECIFICATIONS:

SPDT Mechanical switch

MAX VOLTAGE

125 VAC

30 VDC

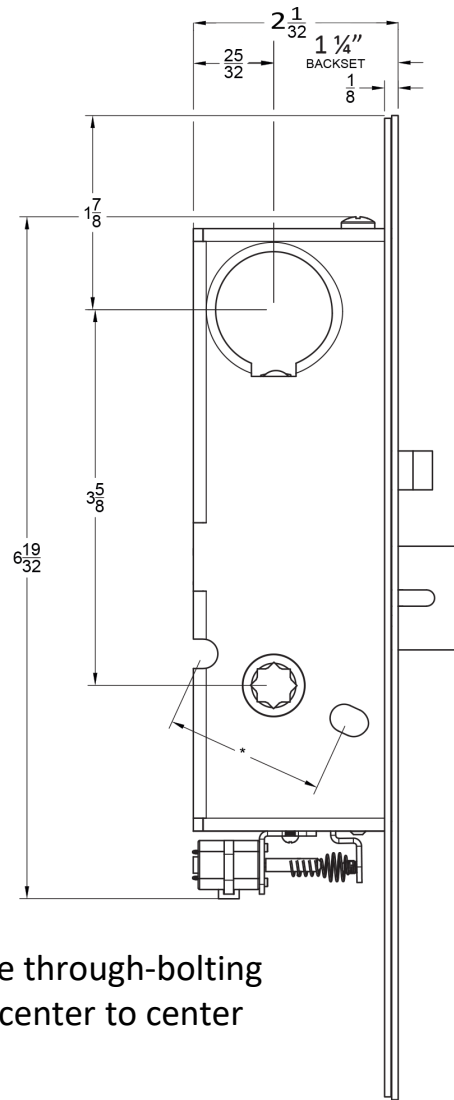
MAX CURRENT

1 AMP

0.5 AMP

NOTE: Mainly used as a dry contact monitoring switch

M8500E Dimensions



* To accommodate through-bolting
 $1\frac{1}{2}$ " - $1\frac{11}{16}$ " center to center

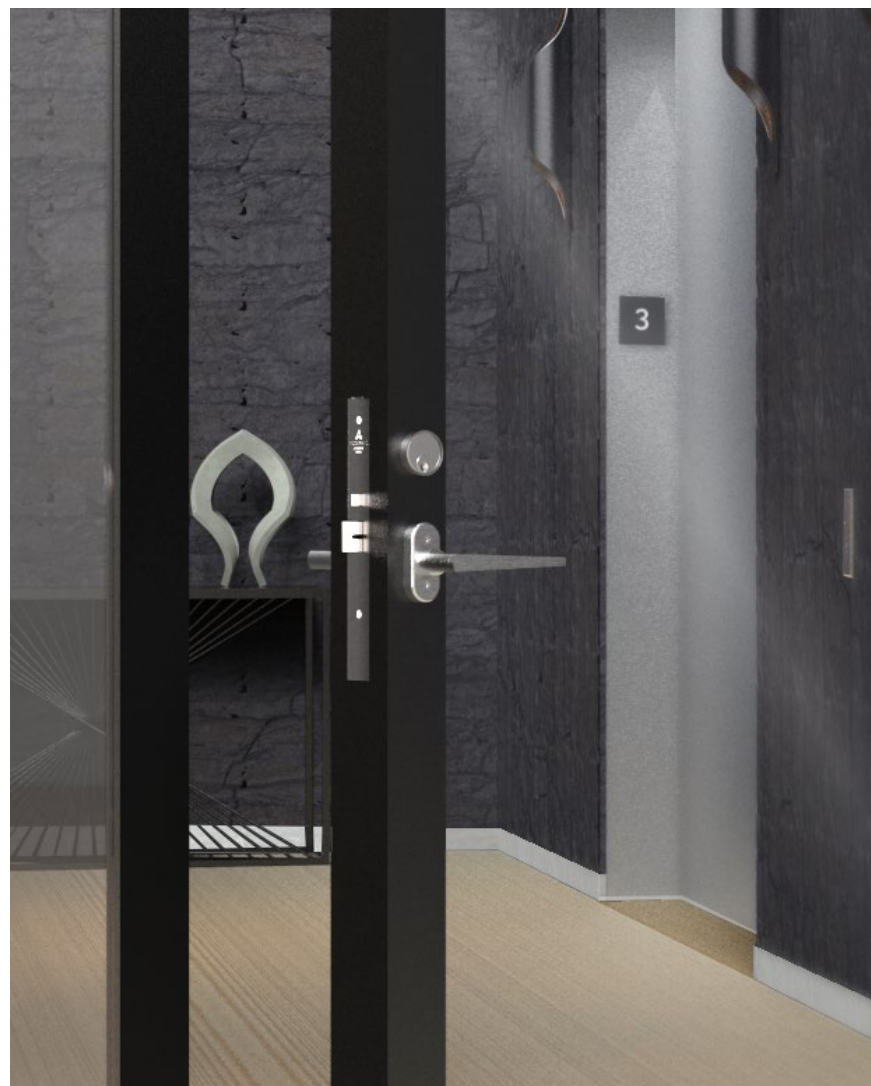
"A":
 1 " (8600 locks for $1\frac{3}{8}$ " thick doors)
 $1\frac{1}{4}$ " (8500 locks for $1\frac{3}{4}$ " doors)

M8500E Trim Examples

18L LEVER



2R ROSE



M8500E Trim Options

15L LEVER



16L LEVER



17L LEVER



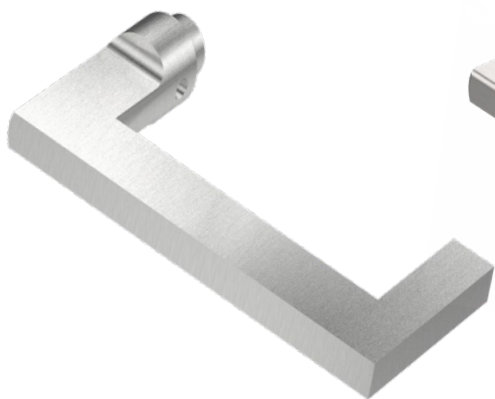
18L LEVER



19L LEVER



20L LEVER



21L LEVER



24L LEVER



29L LEVER



74L LEVER



M8500E Trim Options

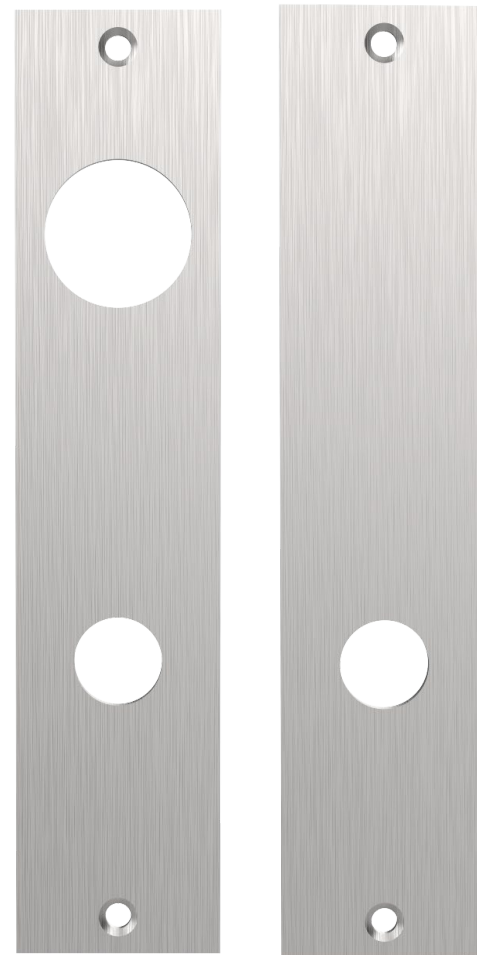
2R ROSE



4R ROSE

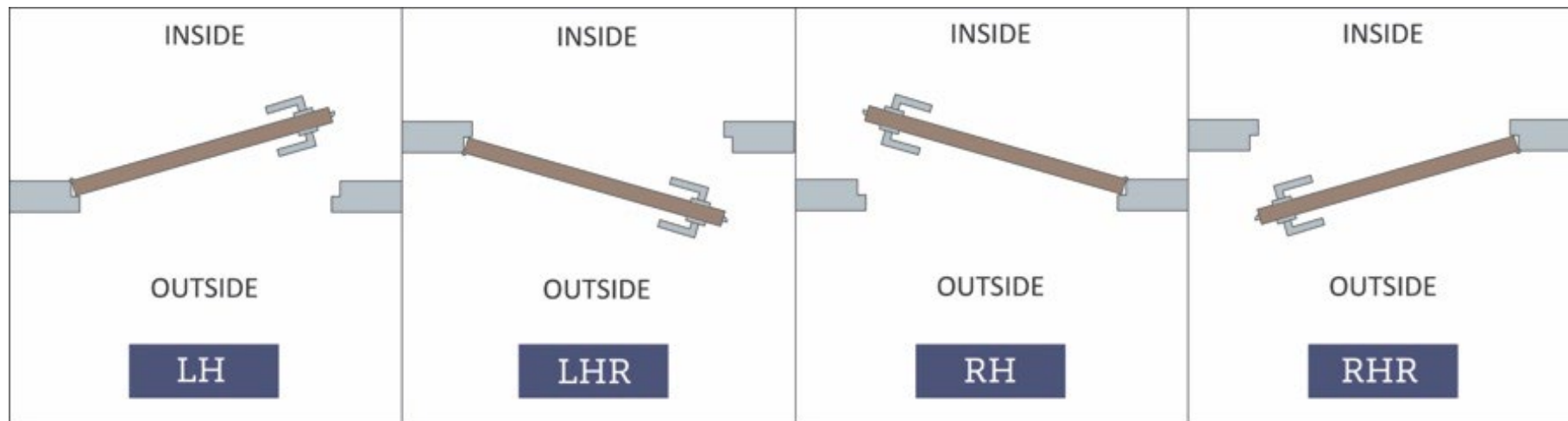


**1E-175
NARROW ESCUTCHEON**



HOW TO SPECIFY

HANDING



FINISHES

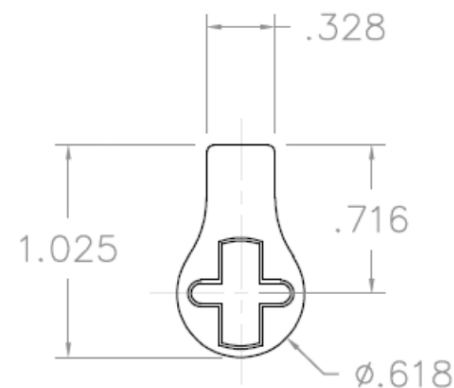
GROUP 1: US4, US4NL, US32D*, US26D

GROUP 2: US3, US3NL, US26, US32*, US9*, US10*, US10B, US14, US15, US19

GROUP 3: BN, BB, TN, TB, DURO, ESN, US15A, US5, US19LL

* Trim options (including Accurate Levers) may not be available in US32D, US32, US9, or US10 finish. Please call for assistance.

To view example of finishes visit: [Accurate Finishes](#).



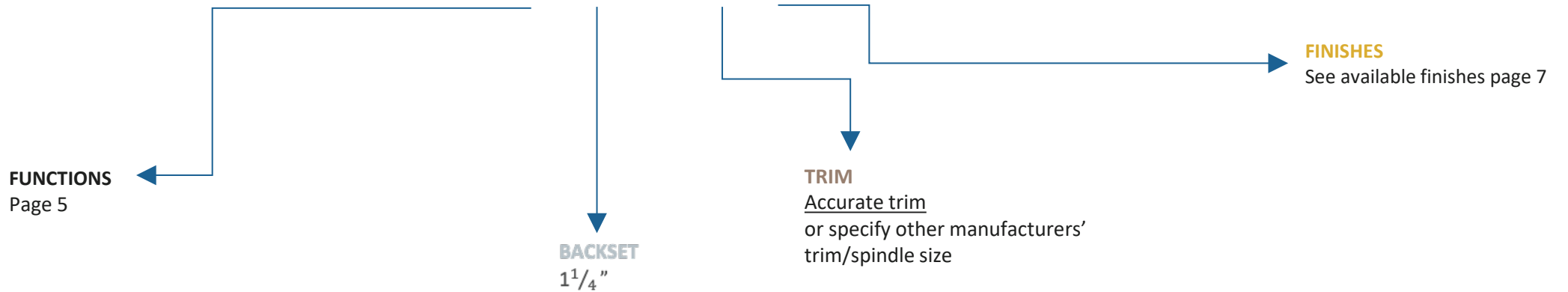
CYLINDERS & KEYING

M8500E Series locks accept any standard American mortise cylinder. For details on required cams and compatibility with other manufacturers' cylinders, please visit: [Accurate Support](#).



HOW TO SPECIFY

FUNCTION-MONITOR.BACKSET.TRIM.FINISH.HAND.DOORTHICKNESS



EXAMPLES

Narrow Backset Electrified Lock | Authorized Egress

E.g.: M8559E-AE.114.18L/2R.US26D.RH.134

Narrow Backset Electrified Lock | 1" Faceplate

E.g.: M8659E.114.19L/4R.US4.LH.134

Narrow Backset Electrified Lock | UL Listed

E.g.: M8558E-UL.114.21L/2R.US26D.RH.134

Note: Access Control Components by Others.

**Note: For compatibility with other manufacturers' trim please call for assistance.*

**ACCURATE LOCK & HARDWARE
MANUFACTURERS OF LOCKS AND
CUSTOM ARCHITECTURAL HARDWARE**

1 Annie Place | Stamford, CT 06902

P: 203.348.8865

F: 203.348.5234

E: sales@accuratelockandhardware.com

www.accuratelockandhardware.com



**AMERICAN CRAFTED
— SINCE 1972 —**