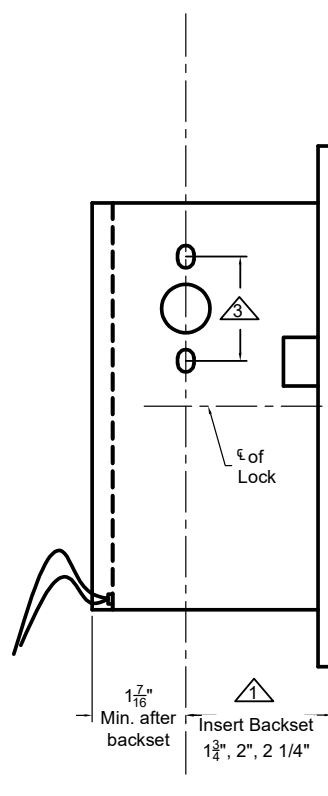
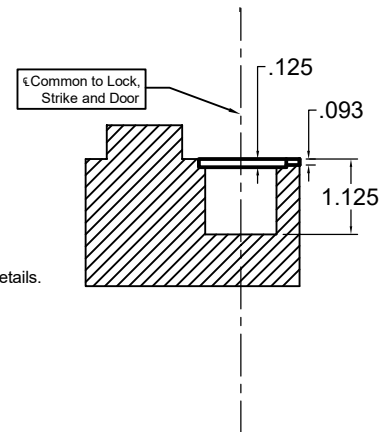
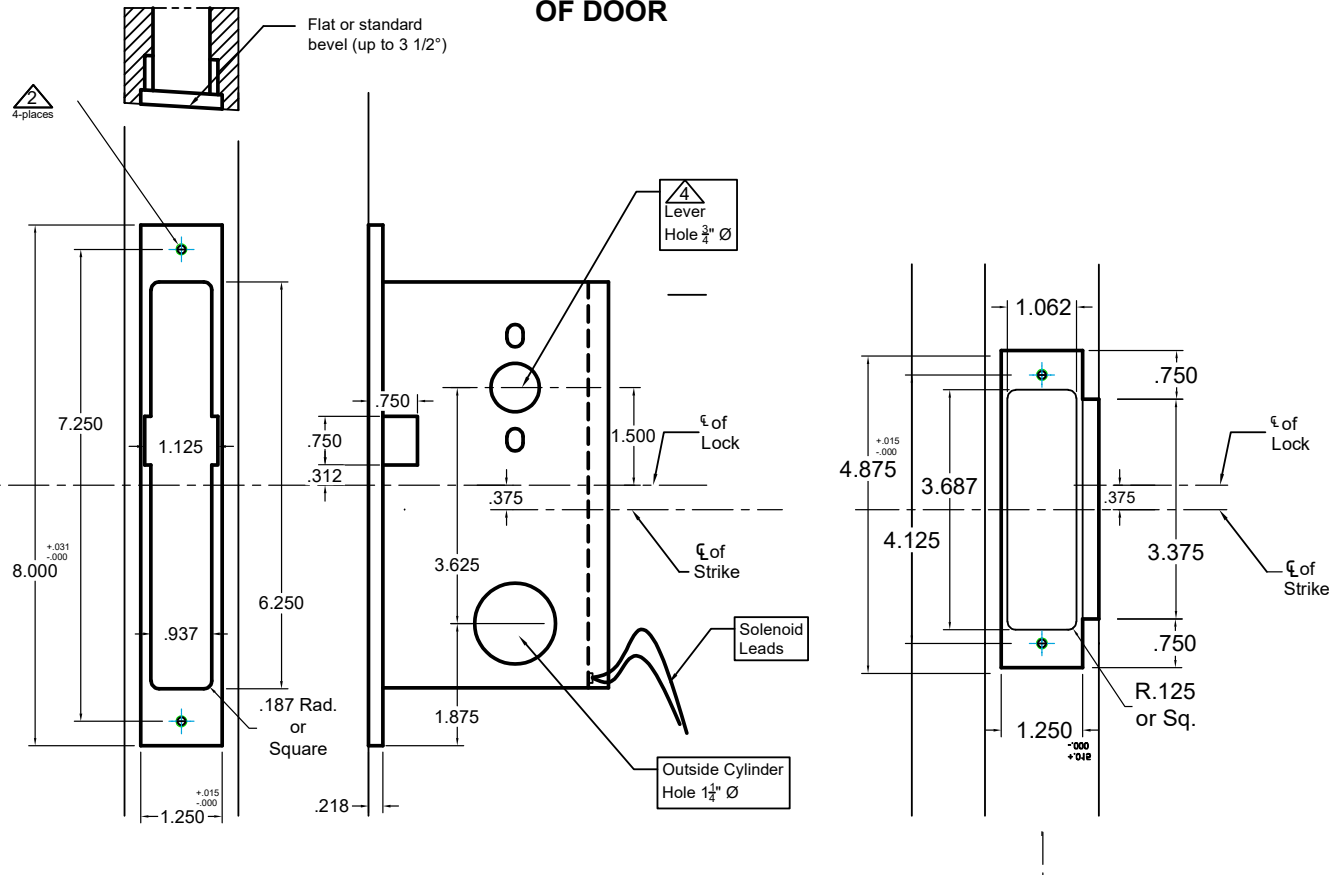


INSIDE OF DOOR



OUTSIDE OF DOOR



Notes:

- △ Insert backset here 1 3/4", 2", 2 1/4"
- △ Prep for #12 wood or 12-24 machine screws
- △ Thru bolting holes **ONLY** if required. See trim manufacturers standard template for details. Accurate lock's accommodates 1 1/2" to 1 11/16" center to centers and up to 1/2" dia. post. If there are any additional questions about the thru-bolting, please contact our office.
- △ Lever holes may vary from different trim manufacturers. Please refer to their templates to confirm these dimensions.

Additional Notes:

- a) **Responsibility:** Door and frame manufacturers are responsible for providing adequate construction or re-inforcement for proper installation of hardware shown.
- b) Please contact us if a double lip strike is needed - for a proper template
- c) See catalog / spec sheets for additional lock details