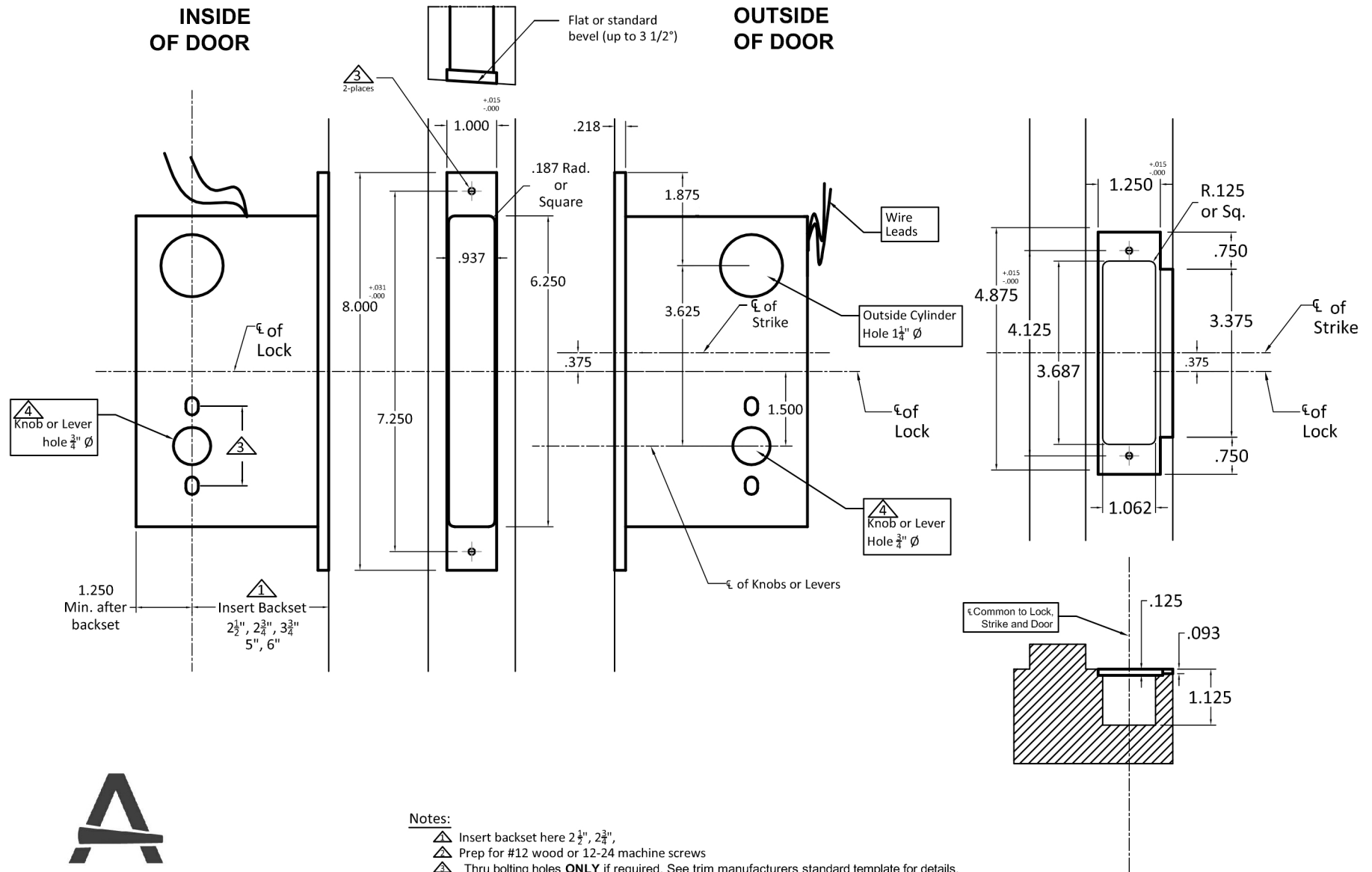


**INSIDE  
OF DOOR**

**OUTSIDE  
OF DOOR**



**Notes:**

- ▲ Insert backset here  $2\frac{1}{2}''$ ,  $2\frac{3}{4}''$ ,
- ▲ Prep for #12 wood or 12-24 machine screws
- ▲ Thru bolting holes **ONLY** if required. See trim manufacturers standard template for details. Accurate lock's accommodates  $1\frac{1}{2}''$  to  $1\frac{11}{16}''$  center to centers and up to  $\frac{1}{4}''$  dia. post. If there are any additional questions about the thru-bolting, please contact our office.
- ▲ Knob, thumbturn and ER holes may vary from different trim manufacturers. Please refer to their templates to confirm these dimensions.

**Additional Notes:**

- a) **Responsibility:** Door and frame manufacturers are responsible for providing adequate construction or re-inforcement for proper installation of hardware shown.
- b) Please contact us if a double lip strike is needed - for a proper template
- c) See catalog / spec sheets for additional lock details



Standard M9058E Lever x Lever  
or Knob x Knob Template  
All Backsets

T-ALH.M9058E.LL